

FOR RESERVATIONS

Tsugaru Kaikyo Ferry Schedule

AOMORI
HAKODATE

Updated as of June 2023



tsugarukaikyo.co.jp

Aomori Terminal
017-766-4733

Hakodate Terminal
0138-43-4545

Oma Terminal
0175-37-3111

AOMORI → HAKODATE

HAKODATE → AOMORI

113 kilometers / Duration: 3 hours 40 minutes–3 hours 50 minutes

№3 2:40 a.m.	6:20 a.m.	№2* 12:30 a.m.	4:10 a.m.
№5* 5:20 a.m.	9 a.m.	№4 3:10 a.m.	6:50 a.m.
№7 7:40 a.m.	11:20 a.m.	№8 7:40 a.m.	11:20 a.m.
№11 10 a.m.	1:40 p.m.	№14 Noon	3:40 p.m.
№13 2:20 p.m.	6 p.m.	№16 2:10 p.m.	5:50 p.m.
№17 5:05 p.m.	8:45 p.m.	№18 5:30 p.m.	9:10 p.m.
№19 7:10 p.m.	10:50 p.m.	№22 8:15 p.m.	12 a.m.
№23 10:25 p.m.	2:05 a.m.	№24 10:05 p.m.	1:45 a.m.

* These ferries may be cargo only, so please verify ahead of time.
Please check the ferry schedule from Aug. 10–18

Schedule valid: Jan. 4–Aug. 9 / Aug. 20–Dec. 30

40 kilometers / Duration: 1 hour 30 minutes

OMA → HAKODATE

HAKODATE → OMA

№5 7 a.m.	8:30 a.m.	№6 9:30 a.m.	11 a.m.
№9 1:40 p.m.	3:10 p.m.	№10 4 p.m.	5:30 p.m.

Schedule valid: Aug 10–19

40 kilometers / Duration: 1 hour 40 minutes

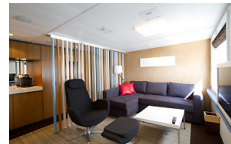
OMA → HAKODATE

HAKODATE → OMA

№5 7 a.m.	8:30 a.m.	№6 9:30 a.m.	11 a.m.
№7 12:30 p.m.	2 p.m.	№8 3 p.m.	4:30 p.m.
№11 5:25 p.m.	6:55 p.m.	№12 7:45 p.m.	9:15 p.m.

Reservations can be made up to three months in advance.

Blue Dolphin 2: № 5, 14, 17 & 24



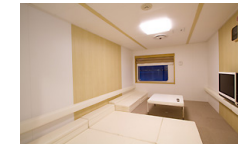
Premiere: jacuzzi, mini bar, living room



Suite: bed, TV, toilet, shower room



First Class (two people): bed, TV, sink



Comfort (up to four people): sofa, mattress, TV, sink

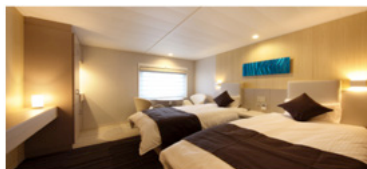


Standard

Blue Dolphin: № 2, 7, 16 & 19

Blue Mermaid: № 3, 8, 13 & 22

Blue Happiness: № 4, 11, 18 & 23



Suite: bed, TV, toilet, shower room



Comfort (up to four people): sofa, mattress, TV, sink



Standard



View Seat

Daikanmaru: № 5, 6, 7, 8, 9, 10, 11 & 12



First Seat



Casual Seat



Standard

You will need your license plate number and vehicle length (see vehicle registration). Check-in for boarding is an hour and a half before departure time.

FOR RESERVATIONS

Seikan Ferry Schedule

AOMORI
HAKODATE

Updated as of June 2023



seikan-ferry.co.jp

Aomori Terminal
017-782-3671

Hakodate Terminal
0138-42-5561

Reservations can be made up to two months in advance.

AOMORI → HAKODATE

HAKODATE → AOMORI

113 kilometers / Duration: 3 hours 40 minutes-4 hours

№1* 2 a.m.	5:50 a.m.	№2* 2 a.m.	5:50 a.m.
№3* 4:30 a.m.	8:30 a.m.	№4 4:30 a.m.	8:30 a.m.
№5* 8:10 a.m.	12:10 p.m.	№6* 8:10 a.m.	12:10 p.m.
№7 11:35 a.m.	3:25 p.m.	№8* 11:35 a.m.	3:25 p.m.
№9 2:35 p.m.	6:25 p.m.	№10 2:35 p.m.	6:25 p.m.
№11 6 p.m.	9:50 p.m.	№12 6 p.m.	9:50 p.m.
№13 8:30 p.m.	12:20 a.m.	№14 8:30 p.m.	12:20 a.m.
№15 11:30 p.m.	3:20 a.m.	№16 11:30 p.m.	3:20 a.m.

* These ferries may be cargo only, so please verify ahead of time.

Hayabusa №1



Hayabusa №3



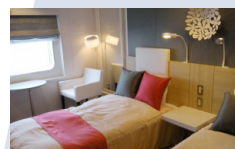
Asakaze №5



Asakaze №21



Silver Princess



Special Class



First Class



Second Class



Second Class (ladies)

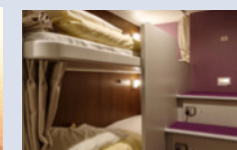
Silver Tiara



Special Class



First Class



Second Class



Economy

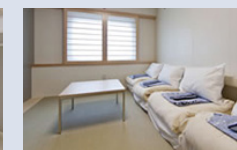
Silver Eight



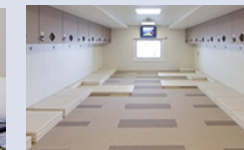
Special Class



First Class



First Class



Second Class

Venilia



First Class



Second Class



Driver's Room

FOR RESERVATIONS

Silver Ferry Schedule

HACHINOHE
TOMAKOMAI

Kawasaki Kinkai

silverferry.jp

Reservation center
0120-539-468

Hachinohe Terminal
0178-28-2018

Tomakomai Terminal
0144-34-1181

HACHINOHE → TOMAKOMAI

TOMAKOMAI → HACHINOHE

242 kilometers / Duration: 7 hours 15 minutes-8 hours

Silver Princess 8:45 a.m.	4 p.m.	Venilia 5 a.m.	1:30 p.m.
Silver Tiara 1 p.m.	8:15 p.m.	Silver Eight 9:30 a.m.	6 p.m.
Venilia 5:30 p.m.	1:30 a.m.	Silver Princess 9:15 p.m.	4:45 a.m.
Silver Eight 10 p.m.	6 a.m.	Silver Tiara 11:59 p.m.	7:30 a.m.

You will need your license plate number and vehicle length (see vehicle registration). Check-in for boarding is an hour and a half before departure time.

Ferry Price Table (One Way)

10% discount applies to round-trip bookings.

Updated as of June 2023

VEHICLE	Vehicle Length (In meters)	AOMORI - HAKODATE (Tsugaru Kaikyo) <small>Reservations can be made up to three months in advance.</small>			OMA - HAKODATE <small>*Bed not available</small> <small>Reservations can be made up to three months in advance.</small> (Tsugaru Kaikyou)			AOMORI - HAKODATE (Seikan Ferry) <small>Reservations can be made up to three months in advance.</small>		HACHINOHE - TOMAKOMAI (Silver Ferry)	
		A	B	C	A	B	C				
	Less than three	¥16,400	¥19,750	¥22,270	¥12,450	¥14,970	¥16,850	Oct-May	Jun-Sep	-	
	Less than four	-	-	-	-	-	-	¥15,600	¥19,500	¥21,000	
	Less than five	-	-	-	-	-	-	¥17,500	¥21,500	¥27,000	
	Less than six	¥19,760	¥23,950	¥27,100	¥15,800	¥19,150	¥21,670	¥19,100	¥23,700	¥33,000	
PASSENGER	Ages 12+	Special Class	¥5,630 (¥2,770)	¥6,880 (¥3,460)	¥7,830 (¥3,980)	-	-	-	-	-	¥14,000 (¥8,400)
		First Class	-	-	-	¥2,990 (¥670)	¥3,620 (¥840)	¥4,090 (¥960)	¥6,500 per room (Hayabusa)	¥6,500 per room (Hayabusa)	¥11,200 (¥5,600)
		Second Class Comfort	¥3,950 (¥1,090)	¥4,790 (¥1,370)	¥5,420 (¥1,570)	-	-	-	-	-	¥8,400 (¥2,800)
		Second Class (view seating)	¥3,400 (¥540)	¥4,100 (¥680)	¥4,630 (¥780)	¥2,740 (¥420)	¥3,300 (¥520)	¥3,730 (¥600)	-	-	¥8,400 (¥2,800)
		Economy	¥2,860	¥3,420	¥3,850	¥2,320	¥2,780	¥3,130	¥2,200	¥2,700	¥5,600
	Ages 6-11	Special Class	¥2,820	¥3,440	¥3,920	-	-	-	-	-	¥7,000
		First Class	-	-	-	¥1,500	¥1,810	¥2,050	-	-	¥5,600
		Second Class Comfort	¥1,980	¥2,400	¥2,710	-	-	-	-	-	¥4,200
		Second Class (view seating)	¥1,700	¥2,050	¥2,320	¥1,370	¥1,650	¥1,870	-	-	¥4,200
		Economy	¥1,430	¥1,710	¥1,930	¥1,160	¥1,390	¥1,570	¥1,100	¥1,350	¥2,800

A: Jan. 5–April 27 | May 8–31 | Oct. 1–Dec. 22

B: June 1–July 14 | Aug. 21–Sep. 30 | Dec. 23–31

C: April 28–May 7 / July 15–Aug. 20

Price in () is the difference when driver upgrades ferry room from economy class.

All information is subject to change without notice.