

MISAWA FORCE SUPPORT SQUADRON

Leisure

T I M E S

family

Thankful



togetherness

appreciation

NOVEMBER 2024



MILITARY FAMILY APPRECIATION MONTH

Scavenger Hunt

Now-Friday, Nov. 29

FREE | All Ages

Follow [@MisawaJapanM&FRC](#) for a chance to win during our virtual family scavenger hunt. Every week we will release a new scavenger hunt clue, reply with a family photo to enter.

Entries accepted | Monday-Thursday

Winner announced | Fridays

*Each photo entry is equal to one raffle ticket
Max. 3 photos or raffle entries per family per week*

Prizes

One Commissary gift card | Every Friday

One FSS gift card | At the end of the month

*All participants will be entered to win in
a drawing for a FSS gift card*



Military & Family Readiness Center

BLDG. 656 | 226-4735 [f](#) [@MisawaJapanM&FRC](#) [i](#) [@MisawaMFR](#)



Get the Leisure Times for FREE right to your mailbox! Scan QR code to sign up



FIND BANZAI & WIN!

Email his location to misawa.marketing@us.af.mil for a chance to win a \$50 FSS gift card. Banzai was on page 28 in the October Leisure Times.

[35fss.com](https://www.35fss.com) [@MisawaFSS](https://www.instagram.com/MisawaFSS) [@35FSS](https://www.facebook.com/35FSS)

NOV CONTENTS

OUTDOOR FITNESS CHALLENGE & TURKEY TROT

Page 11

Command

Commander, 35th Fighter Wing

Col Paul T. Davidson

Commander, 35th Mission Support Group

Col Jonathan B. Bell

Commander, 35th Force Support Squadron

Maj Jessica B. Richmond

Deputy, 35th Force Support Squadron

Mr. Stefan Kelly

Marketing & Publicity

Marketing Director/Managing Editor

Kim Tato 

Communications

Specialists

Patricia Snow

Leanna Duff

Samantha Nelson

Commercial

Sponsorship

Ayub Spencer

Commercial Artist

Wakouko Sato

Illustrators

Kazunori Takahashi

Taichi Tsuda

Seiji Nishimura

Mami Takabatake

Find Banzai Winner

Oct. 2024

Gabrielle Gray



WANT TO PURCHASE AD SPACE IN THE LEISURE TIMES?

misawa.marketing@us.af.mil

The Leisure Times is designed to entertain and inform the Misawa Air Base community about 35th Force Support Squadron facilities. Opinions expressed in the Leisure Times do not necessarily represent those of the U.S. Air Force. All submissions are subject to editing prior to printing.

Culture & Travel

10 ODR Tours

14 ITT Tours

Resources

6 Military & Family Readiness Center Programs

15 Post Office • Holiday Hours • Sunrise Shipping

24 Education & Training • American Education Week • MilTA • SkillBridge Briefing

25 Overstreet Library

26 Auto Hobby • Driver's ED

27 Pet Kennel • Yappy Hour

28 NAF HRO

29 Banzai Award

31 FSS Directory

32 FSS Event Calendar

Entertainment

4 Chapel Hart

5 Friendship Market • Friday Night Bingo • Brainstormer Trivia • Chapel Hart • Holidays Around the World Tree Lighting Ceremony

8 Movie & Bowl • 9 Pin No-Tap Tournament • Kids Eat FREE Night • Airmen's Alleys • Sunday Family Day • Red Pin Tuesday • Laser Storm • Veterans Bowl FREE • Ladies Night

12 Pool Party • Family Fun Night • Lightspeed Paintball • Super Saturday • The Lodge

16 Latin Dance Nights • Friday Night Club Member Social • Thursday Night Family Member Social • Trivia Night Misawa Con

25 Our Heroes' Tree

Learn & Create

22 Brushes & Beverages •

Graphics Shop

25 STEM Programs • History of the Vietnam War Display

Fitness & Sports

11 Outdoor Fitness Challenge & Turkey Trot

13 Trackman 4 Simulator • Breast Cancer Awareness 5k • Turkey Trot • Turkey Bowl

Dining

15 DFAC Thanksgiving Meal

17 Aomori Eats • Sunday Breakfast Buffet • Taco Tuesday • Wing Wednesday • Tanuki's • Thanksgiving To Go

18 November Dining Specials

Youth & Family

15 Santa's Workshop • Letters to Santa Program

20 Nature Walk at Shimoda Swan Park • Fun Fall Cookies • Let's Celebrate World Kindness Day • "Trash to Treasure" Competition • Curry for Veterans • Fall Harvest Luncheon

23 Young Van Gogh • Mini Monet



Friendship Market

Page 5



DFAC Thanksgiving Meal

Page 15



Trivia Night Misawa Con

Page 16



THE GIRLS ARE BACK IN TOWN

Chapel Hart

MONDAY, NOV. 11

Doors Open • 6 p.m. | Show Starts • 7 p.m.

Misawa Club | All Ages | FREE


Meet & Greet Passes

(First 75 guests through the door)

Tickets are limited, so pick yours up at the
Misawa Club Cashiers' Cage, BLDG. 485 or
Community Commons, BLDG. 1006, Bay 1

Now-Friday, Nov. 8.



 No official endorsement intended

Learn more at ArmedForcesEntertainment.com



Community Commons

BLDG. 1006, Bay 1

226-4128

Chapel Hart

Monday, Nov. 11
Doors Open | 6 p.m.
Show Starts | 7 p.m.
All Ages | FREE

See page 4 for more details

Prepare for a night of unforgettable music as we welcome these renowned country stars and America's Got Talent finalists! This is your chance to see these rising stars hailed by CMT as the "Next Women of Country."

Brainstormer Trivia Night

Wednesday, Nov. 13
Starts | 6 p.m.
All Ages | FREE

Ages 20+ to consume alcohol

Trivia will be every second Wednesday of the month. You will compete in 6 rounds of trivia for cash prizes including: POP, Pictures, Matching, General Knowledge, Know-it-all and Themes. You may bring your own snacks and beverages.

Friday Night Bingo

Nov. 8 & 22
Starts | 7:30 p.m.
Pre-sale | \$15
Day of Event | \$20
Ages 18+

Community Commons presents Friday Night Bingo! Bring your own food and drinks.

Friendship Market

Saturday, Nov. 23
10 a.m.-4 p.m.
All Ages | FREE
BLDG. 1006, Bay 1

Join us for holiday shopping and take home one-of-a-kind creations from your favorite Home Based Businesses (HBBs) and private organizations.

Holidays Around the World Tree Lighting Ceremony

Friday, Dec. 6
Risner Circle | 5-7 p.m.
All Ages | FREE

Gather round' for Misawa's tree lighting where we recognize different holidays of the season before our annual tree lighting ceremony. Enjoy FREE hot chocolate, s'mores and cookies. Take photos with Santa and shop at Home Based Businesses (HBBs) and private organizations at our Kris Kringle Market.





Relocation

Right Start

Wednesdays
7 a.m.–3:30 p.m.

Cultural City Tour

Fridays | Nov. 1, 15 & 22
8 a.m.
Meet Behind the Library

Sponsorship Training

Tuesday | Nov. 5
1–2 p.m.

Deployment

Remote Tour Brief

Mondays
10 a.m., 1 p.m. & 2:30 p.m.

Reintegration

Fridays
9–11 a.m.

Pre-Deployment

Wednesdays | Nov. 6 & 20
9–11 a.m.

Transition Assistance Program

*By appointment only | Individualized Initial Counseling & Capstones

Transition Workshop (3-Day)

Monday, Nov. 4–Wednesday, Nov. 6 | 8:30 a.m.–4:30 p.m.

Employment (2-Day)

Thursday, Nov. 7–Friday, Nov. 8 | 8:30 a.m.–4:30 p.m.

*Pre-Separation Briefing

Tuesday, Nov. 12 | 8:30–11:30 a.m. | Retiree
Tuesday, Nov. 19 | 1–4 p.m.

Career & Confidential

Thursday, Nov. 14–Friday, Nov. 15 | 8:30 a.m.–4:30 p.m.

Personal & Work Life Classes

Stress

Tuesday, Nov. 5
2–3 p.m.

Cooking 101

Wednesday, Nov. 6
11:30 a.m.–12:30 p.m.

Conflict Resolution

Thursday, Nov. 14
9 a.m.–10 a.m.

Bundles for Babies

Thursday, Nov. 14
9 a.m.–Noon

Spouse Monthly Meet up

Thursday, Nov. 14
5–7 p.m.

M&FRC

Military & Family Readiness Center

BLDG. 656 | 226-4735

 @MisawaJapanM&FRC

 @MisawaMFRC

Personal Finance Classes

**Some classes take place in the Professional Development Center (PDC), BLDG. 1006

Holiday Spending

Tuesday, Nov. 5
8-9 a.m.

Thursday, Nov. 7**
2:30-3:30 p.m.

Planning

Wednesday, Nov. 6**
8-9 a.m.

Friday, Nov. 8
2:30 p.m.

Divorce

Thursday, Nov. 7
8-9 a.m.

Marriage

Thursday, Nov. 7
9-10 a.m.

PCS

Thursday, Nov. 7
10-11 a.m.

Promotion

Thursday, Nov. 7
11 a.m.-Noon

Vesting in TSP

Thursday, Nov. 7
1-2 p.m.

Emergency Preparedness

Wednesday, Nov. 13
8-9 a.m.

Friday, Nov. 15**
2:30-3:30 p.m.

Credit Management

Tuesday, Nov. 19**
9-10 a.m.

Wednesday, Nov. 20
2:30-3:30 p.m.

Closures

CLOSED | Every Thursday,
2-4 p.m.

CLOSED | Thursday, Nov. 21

CLOSED | Federal holidays &
weekends

Volunteer

Looking for volunteer opportunities within the Misawa AB community? Contact us at 35fss.fsc@us.af.mil for a list of agencies and private organizations needing volunteers.

AFN Radio Live

Every Wednesday | 3-4 p.m.

Additional Programs

For voting assistance, Air Force Aid Society, EFMP (Exceptional Family Member Program), Survivor Benefits Plan, childcare for PCS and Give Parents a Break, contact us for more information.

Employment

For more information on these programs visit our webpage at 35fss.com

- Military spouse career and education coach packages
- Department of Labor TEAMS (FREE virtual employment workshops)

Small Business Administration (SBA)

Offers a range of entrepreneurship programs, visit sba.gov/events for more information

- Military Spouse Pathway to Business
- Boots to Business



SIGN UP

All programs and events are FREE, but registration is required for each class. Scan the QR code to sign up. Unless otherwise stated all events take place at M&FRC. **Class dates and times are subject to change.**



BLDG. 627 | 957-1554



WALMSLEY BOWLING CENTER

Maintenance Day | Tuesday, Nov. 5 | CLOSED

Thanksgiving Day | Thursday, Nov. 28 | CLOSED

RECURRING EVENTS

Red Pin Tuesday

Tuesdays

11 a.m.-9 p.m.

\$1 games & \$1 shoe rentals

If you get a strike with a red headpin, you win a FREE game! For verification, you must notify the desk that you have a red headpin prior to rolling the frame.

Kids Eat Free Night

Thursdays

5-8:30 p.m.

Ages 12 & under

Take the night off from cooking dinner and bring the family to Bumpers Fusion Diner! Get a FREE kids meal for each purchased adult combo meal.

Laser Storm Bowling

Fridays & Saturdays

7-11 p.m.

We turn the lights down and the music up! Grab your friends and "glow" bowling while requesting your favorite songs! This is open to all patrons, however explicit and adult-themed music and videos may be played.

Airmen's Alley

Fridays & Saturdays

7-11 p.m.

E1-4 | \$15

E5-6 | \$25

Ages 18+ | E6 & below only

Enjoy unlimited games and shoe rentals all night long! You must show your ID to bowl.

Sunday Family Day

Sundays

11 a.m.-7 p.m.

\$40 per lane

Wrap up your weekend with family and friends at Walmsley Bowling Center with family-friendly Laser Storm! Recieve 90 minutes of unlimited bowling, shoe rentals, personal size pizza and 16 oz. drinks for up to four people!

Veterans Day

Monday, Nov. 11
11 a.m.-9 p.m.

Come celebrate Veterans Day at Walmsley Bowling Center because nothing beats FREE. All day long, veterans bowl for FREE and their guests only pay \$1 for games and shoe rentals.

Ladies Night

Friday, Nov. 15
6-9 p.m.
\$15 per person

It's Ladies' Night at Walmsley Bowling Center! Grab your gal pals and bowl for your chance to win some of our amazing prizes.

BLACK FRIDAY SALE

Friday, Nov. 29
11 a.m.-10 p.m.

ALL INVENTORY 5%-50% OFF

Did you join a league? Do you just want to up your bowling game? No matter the answer, this sale lets you stock up on bowling gear for the upcoming year, helping you become the best bowler you can be!

Movie & Bowl

Saturday, Nov. 30
7-11 p.m.

Featuring PG-13 movies that YOU get to choose.

Scan the QR to
cast your vote



9 Pin No-Tap Tournament

Last Sunday of every month

Noon

*\$25 per person

Ages 18+

Get ready for the ultimate bowling showdown with three intense rounds of action! Knock down 9 pins on your first ball for a strike (8 pins for ladies) and feel the thrill as you compete for the top spot and a cash prize! A minimum of ten players is needed to bowl. The bowling lane pattern difficulty changes every month.

*Shoe rentals not included, cash only

Sign up





BLDG. 486 | 226-9378

 @MISAWAAB.ODR

 @MISAWA ODR

OUTDOOR RECREATION CENTER

Winterfest

Saturday, Dec. 7
9 a.m.-3:30 p.m.
Weasels' Den | BLDG. 973
FREE | All Ages

Sponsored by



No federal endorsement of advertiser(s) intended.



Shop till you drop at Misawa's biggest winter shopping event. Browse through premium equipment from big name brands, talk to local resorts, browse through Home Based Businesses and more!

December Adventures go on sale Friday, Nov. 1

An introduction to snowboarding session will be offered on select Resort Run trips at an additional cost.

Winter Wandering

Wednesdays | Dec. 4 & 11

Departs | 10 a.m.

Returns | 2 p.m.

\$35 per person | \$10 RecOn*

**Ages 14+

Need a break from the norm? Join us and fellow naturalists for an excursion through parts of nearby woods and waterways. Bring your camera, binoculars and enthusiasm for the natural world.

Includes: Transportation & Adventure Guide

Distant Resort Run

Saturdays | Dec. 14 & 21

Departs | 6:30 a.m.

Returns | 8:30 p.m.

\$95 per person | \$55 RecOn* | \$25 ride along

**All Ages

Want to change up the scenery, but don't want to drive 3+ hours on your own? Join us as we head to one of our favorite, further away resorts (Geto Kogen or Tazawako Ski Resort). Sign up early, as these seats go fast!

Includes: Transportation, Adventure Guide, ODR ski/snowboard rental & lift ticket (if paying regular or RecOn price)

- ODR ski/snowboard rentals are available on a first come, first serve basis. Premium rentals are NOT included.
- \$25 ride along reservations are available. ODR will NOT cover the cost of your lift ticket or provide you with rental equipment.
- Ski & snowboard lessons are NOT included or provided by ODR staff.

Holidays in Hokkaido

Monday, Dec. 23–Saturday, Dec. 28

Departs | 8 a.m.

Returns | 9 a.m.

\$900 per person | \$450 RecOn*

Ages 18+

No need to stress over holiday plans. We got you! Japan's Northern Frontier of Hokkaido offers the comfort of wild hot springs, a dazzling light festival and the excitement of snowmobiles dashing through the—you guessed it—snow.

Includes: Transportation, Adventure Guide, lodging & entry fees

- There is a mandatory pre-trip briefing at ODR

Resort Run

Wednesday, Dec. 25

Departs | 6:30 a.m.

Returns | 6:30 p.m.

\$90 per person | \$50 RecOn* | \$25 ride along

**All Ages

Hit the hottest resorts in Northern Tohoku as we drive you to some of our favorite resorts (including APPI, Aomori Springs, Hachimantai and Shizukuishi). Sign up early, as these seats go fast!

Includes: Transportation, Adventure Guide, ODR ski/snowboard rental & lift ticket (if paying regular or RecOn price)

- ODR ski/snowboard rentals are available on a first come, first serve basis. Premium rentals are NOT included.
- \$25 ride along reservations are available. ODR will NOT cover the cost of your lift ticket or provide you with rental equipment.
- Ski & snowboard lessons are NOT included or provided by ODR staff.

E-1-4 & O-1 Resort Run

Saturday, Dec. 28

Departs | 6:30 a.m.

Returns | 6:30 p.m.

\$40 RecOn* | \$25 ride along

Ages 18+

Are you an E-1-4 or an O-1? Then this trip is SPECIFICALLY for you! Join us as we hit one of our favorite resorts in Northern Tohoku (including APPI, Aomori Springs, Hachimantai and Shizukuishi). Sign up early, as these seats go fast!

Includes: Transportation, Adventure Guide, ODR ski/snowboard rental & lift ticket (if paying RecOn price)

- ODR ski/snowboard rentals are available on a first come, first serve basis. Premium rentals are NOT included.
- \$25 ride along reservations are available. ODR will NOT cover the cost of your lift ticket or provide you with rental equipment.
- Ski & snowboard lessons are NOT included or provided by ODR staff.

Fun Bus

Sunday, Dec. 29

Departs | 8 a.m.

Returns | 6:30 p.m.

\$85 per person | \$45 RecOn* | \$25 ride along

**All Ages

Grab your friends and/or family as we visit various resorts in Northern Tohoku. These trips will rotate between the larger resorts of APPI, Hachimantai and Okunakayama Kogen. Sign up early, as these seats go fast!

Includes: Transportation, Adventure Guide, ODR ski/snowboard rental & lift ticket (if paying regular or RecOn price)

- ODR ski/snowboard rentals are available on a first come, first serve basis. Premium rentals are NOT included.
- \$25 ride along reservations are available. ODR will NOT cover the cost of your lift ticket or provide you with rental equipment.
- Ski & snowboard lessons are NOT included or provided by ODR staff.

An introduction to snowboarding session will be offered on select Fun Bus trips at an additional cost.

Outdoor Fitness Challenge & Turkey Trot

Saturday, Nov. 16

Starting Location | Lemon Lot
FREE

7:30 a.m.

Check-in

8 a.m.

20k (10k cycling + 10k run) | **Ages 16+

15k (10k cycling + 5k run) | **Ages 16+

8:30 a.m.

10k (run) | **Ages 12+

5k Turkey Trot (run) | **All Ages

Ready to ride or run? Whether you're a seasoned athlete or just starting out, there's something for everyone. Choose your distance (20k, 15k, 10k or 5k) and enjoy the fall turkey season outdoors. It's a great way to stay active, meet new friends and push your limits.

PARTICIPANT
SIGN-UP



VOLUNTEER
SIGN-UP



*RecOn discount prices are for active duty military and their family members assigned to Misawa Air Base. Verification in the form of a military/family member ID must be provided at time of enrollment.

**Those under 18 years of age must have a parent or guardian participating

BLDG. 625 | 226-7665

HIMBERG POOL

Hours of Operation

Monday, Wednesday & Friday | 6 a.m.–7 p.m.
Tuesday & Thursday | 8 a.m.–7 p.m.
Saturday | 8 a.m.–Noon | 1–4 p.m.
PACAF Family Days | 10 a.m.–5 p.m.
CLOSED | Last Wednesday of the month,
Sundays, US & select JP federal holidays
Call 226-7665 for PT reservations.

Family Fun Night

Every Friday | 5–7 p.m.
FREE | All Ages

Enjoy an evening of fun with the whole family at the Himberg Pool. Bring your favorite water toys, Super Soakers™, Nerf® balls and small inflatables to the pool for a great time! Floats must be Coast Guard approved.

Pool Party

Friday, Nov. 22 | 5–7 p.m.
FREE | All Ages

Eat, drink, play and laugh when Family Fun Night takes it to the next level with our monthly Pool Party. We provide Flyers pizza and beverages, while giving you the chance to take out all of our toys! All regular Himberg Pool rules and age requirements apply.



AREA 35

Unite Event Reservations

Monday–Friday | 9 a.m.–1 p.m. & 1–5 p.m.
Request 7 days in advance for groups of 10 or more.

Please call Outdoor Recreation at 226-9378 for pricing and for more information on Group Packages.

NEW: Area 35 has all new paintball markers, masks and an updated speedball course!

NEW: Axe Throwing!

Super Saturday

Saturday, Nov. 2
10 a.m.–5 p.m.

Open for all activities: Paintball, Archery & Axe Throwing

Lightspeed Paintball

Friday, Nov. 15
6–9 p.m.

Ages 16+ to play
Ages 10+ to play with a parent or guardian (18+ years) actively participating

***\$65 | 2000 paintballs**

Play paintball under the lights of our speedball court. With FREE field entries, Attack Pack rentals and food! No advance registration is required.



*Area 35 is a cash (USD) only facility. Credit card payments are accepted at ODR, BLDG. 486, during business hours.

BLDG.1482 | 226-9378

THE LODGE

\$50
Noon–10 a.m. next day
Max. occupancy 70

Get exclusive use of the facility for the day. Book your next birthday party, going away, baby shower or another event at The Lodge. Reservations are available year-round, visit the Outdoor Recreation Center to make one today.

Lodging Amenities:

- Booths & Couches
- Restrooms
- Refrigerator
- Sink
- Microwave
- TV
- DVD Player
- Foosball Table

GOSSER GOLF COURSE

BLDG. 1464 | 957-1563



Trackman® 4 Simulator

Monday-Friday | 7:45 a.m.-5 p.m.

Saturday-Sunday | 6:45 a.m.-5 p.m.

\$15 per hour

Take a swing at our simulator to keep your game sharp! Play tour, fictional and non-fictional courses, tune your swing on the driving range, compete in events or test your skills in the golf Combine.

Advance registration is required at the Pro Golf Shop.

BLACK FRIDAY SALE

Friday, Nov. 29-Sunday, Dec. 1

Up to 25% off Pro Shop merchandise. Annual Members will receive an additional 5-10% off!

FITNESS

Breast Cancer Awareness 5K

Saturday, Nov. 2

Starts | 7:30 a.m.

FSS Turf Field | FREE

To raise awareness about breast cancer and the thousands it impacts each year, we will host a one-lap remembrance walk followed by a 5K run. Participants have the chance to WIN various prizes, including T-shirts.

Turkey Trot 5K

Saturday, Nov. 16

Open to all | FREE

The fastest male and female 5K participants will each WIN a coupon for a complimentary precooked turkey from The Misawa Club.

*See page 11 for more details.

Turkey Bowl

Saturday, Nov. 16

Starts | 10 a.m.

FSS Turf Field | FREE

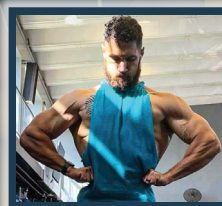
Assemble your team of eight and join us for a competitive flag football match, where the victorious team will be awarded a complimentary cold turkey for each member.

Intramural Basketball Season

Begins | Tuesday, Nov. 26

Open to all | 18+

Please see your unit sports representative or call 226-1964 for additional details.




Johnathan Mease
Potter Fitness Personal Trainer

Johnathan is preparing for his upcoming bodybuilding competition in Tokyo this month, where he will compete in the Classic Physique category. His recent achievements include securing 1st place in the Classic Physique category and 3rd place overall at The Rising Star Championship Bodybuilding Competition in May 2024, as well as winning 1st place in Misawa's inaugural Strongman Competition in September. His motivational mantra, "Don't TALK about it, BE about it," resonates not only with him, but also with his clients during challenging workouts. For those interested in reserving training sessions, please visit the Potter Fitness Center.

Misawa ITT

December

BLDG. 485 | 226-3555  @MisawaITT

Asamushi Aquarium & Goshogawara Elm Mall

Saturday, Dec. 7
On sale Thursday, Nov. 7
Departs | 7:30 a.m.
Returns | 5 p.m.
Ages 16+ | \$35
Ages 6-15 | \$20
Ages 5 & under | \$15

Take a trip to Aomori to see a live dolphin show! While you are there you can get your hands wet in some of the educational tanks, and take a stroll through the underwater tunnel to get a feel of the deep blue sea. After your visit with the Aquarium, head over to Goshogawara to visit the large ELM Mall for some amazing shopping.

Tohoku Free Blades Ice Hockey Game

Saturday, Dec. 14
On sale Thursday, Nov. 14
Departs | 3:15 p.m.
Returns | 9 p.m.
Ages 16+ | \$25
Ages 3-15 | \$20
Ages 2 & under | \$10

Watch the Tohoku Free Blades take the ice as they compete for the Asia League Ice Hockey Japan Cup.
Includes: Round trip transportation & reserved seat

Tsugaru Tetsudo Stove Train

Tuesday, Dec. 24
On sale Friday, Nov. 22
Departs | 8 a.m.
Returns | 7:30 p.m.
Ages 12+ | \$60
Ages 5-11 | \$50
Ages 1-4 | \$30*
Ages 11 months & under | \$15*

*Does not include craft fee for ages 4 & under

Enjoy a ride on the classic Tsugaru Stove Train that has been in service since 1940. The train has a nostalgic atmosphere with a coal potbelly stove inside, wooden window frames and wooden floors. You will take in breathtaking winter scenery on your way to Kanayama City where you will make your own ceramic mug or plate.

Charter Bus

All organizations interested in chartering a bus for a tour should stop by ITT to make reservations. Reservations are accepted 90 days in advance and are taken on a first come, first served basis.

Kuzumaki Winery

Saturday, Dec. 7
On sale Thursday, Nov. 7
Departs | 9:30 a.m.
Returns | 4:30 p.m.
Ages 20+ | \$60

Learn about the process of wine making and enjoy lunch paired perfectly with a variety of local wine samples.
Includes: Transportation, escorted wine factory tour & lunch

Sendai Illumination

Saturday, Dec. 14
On sale Thursday, Nov. 14
Saturday, Dec. 21
On sale Thursday, Nov. 21
Departs | 11 a.m.
Returns | 1 a.m.
Ages 13+ | \$65
Ages 4-12 | \$45
Ages 3 & under | \$30

Experience the Sendai Pageant of Starlight! Ornaments of light bulbs hang from the zelkova trees of Jozenji-dori and Aoba-dori Avenues, brightly illuminating the scene against the night sky. You will also enjoy a chance to shop in downtown Sendai.

BLACK FRIDAY SALE

FRIDAY, NOV. 29

ALL AVAILABLE TOURS

\$10 OFF

Limit one per individual

Happy Birthday

from Misawa ITT!
Save up to \$10 on any local tour scheduled during your birth month, limit one per individual.

Hours of Operation

Monday-Friday
9 a.m.-4 p.m.
CLOSED | Saturdays, Sundays
& federal holidays
For more information
call 226-3555.

Holiday Hours

Friday, Nov. 29–Friday, Jan. 10

Parcel Pick-up Window Open
Monday–Friday | 10 a.m.–7 p.m.
Saturday | 10 a.m.–4 p.m.

Finance Window
Monday–Friday | 10 a.m.–6 p.m.

Official Mail
Monday–Friday | 10 a.m.–5 p.m.

Closures / Special Hours

Family Days

Friday, Dec. 24 | Parcel Pickup Window
Open | 10–4 p.m.
Friday, Dec. 27 | Parcel Pickup Window
Open | 10–4 p.m.

Christmas

Wednesday, Dec. 25 | **CLOSED**

New Years Day

Wednesday, Jan. 1 | **CLOSED**

Mailing Dates

MPS & USPS Ground® | Monday, Dec. 2
USPS Priority® / First Class® | Monday, Dec. 9
USPS Express® | Monday, Dec. 16

Santa's Workshop



Santa's Workshop

Saturday, Dec. 7 | 10 a.m.–1 p.m.
Post Office Lobby

Get ready for a magical time as we write our letters to Santa. Enjoy snacks and drinks joined by special guests from the North pole to help make your letter extra special. Fill your day with festive cheer, sign up using the QR code.

Letters to Santa Program

Monday, Nov. 18–Friday, Dec. 13

Letters are free of charge, no postage! Santa letter instructions will be on the Letters to Santa Dropbox in the Post Office lobby.

Misawa Post Office

BLDG. 519 | 226-3492

Grissom Dining Facility

BLDG. 624 | 226-3997

Thanksgiving

MEAL

Thursday, Nov. 28
10:30 a.m.–4:30 p.m.

ESM | FREE

À La Carte | Cash & Card

The DFAC is hosting their annual Thanksgiving Meal for all ESM/BAS customers, including civilians and dependants.

Menu

Main Dishes:

Roast Rib of Beef
Roast Turkey
Baked Ham

Desserts:

Pumpkin Pie
Pecan Pie
Apple Pie
Carrot Cake
Red Velvet Cake

Sides:

Southern Style Sweet Potatoes
Mashed Potatoes
Baked Macaroni & Cheese
Green Beans w/ Mushrooms
Cream Style Corn
Carrots on the Griddle

We will be having our Thanksgiving Dessert Competition

and YOU get to vote for the winner!
Top off your full belly with a myriad of delicious
desserts and vote for your favorite.

Sunrise Shipping



Sunrise Shipping

*Bulk Shipping
(5 or more packages)

Monday–Friday
9–10:30 a.m.

Appointments allow patrons to pick times that work best for your schedule.

*Please complete your customs forms prior to your scheduled time. Scan the QR below to make your appointment.



MISAWA

FIRST FRIDAY NIGHT CLUB MEMBER SOCIAL

Friday, Nov. 1

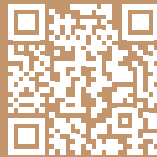
18+

Faultline

Club Members ONLY | FREE

4:30-7 p.m.

Club Members are invited to come and unwind after a fulfilling week at work. Enjoy a grazing buffet, drink specials and an exciting raffle prize.



Become a Club Member and receive all of the wonderful benefits that come along with it! Meal vouchers, FREE room rentals, 10% off facilities and so much more.

Visit Memberplanet.com to sign up today!

THURSDAY NIGHT FAMILY MEMBER SOCIAL

Thursday, Nov. 14 | All Ages

Misawa Club

4:30-7 p.m.

Club Members ONLY | FREE

Get more out of your club membership. Member families can enjoy a FREE night of food, drinks and movie entertainment! Scan the QR code to become a member today.



Special Events

TRIVIA NIGHT

Theme | Misawa Con

Thursday, Nov. 21

Doors open | 5 p.m.

Game starts | 6:30 p.m.

Faultline

All Ages | FREE

RECURRING EVENT

LATIN DANCE CLASS

Every Tuesday

6-8 p.m.

Faultline

FREE

18+

Just show up with your dancing shoes and we'll lead the way!



WHERE GOOD VIBES AND GOOD TIMES

CLUB

BLDG. 485 | 226-9122



@MisawaClub

Keep in touch on social media to find out what member exclusive events we will be holding!

CLOSURES / SPECIAL HOURS

Maintenance Day

Monday, Nov. 4

Tomodachi Café | **CLOSED**
Cashiers' Cage | 9 a.m.–4 p.m.
Slots | 8 a.m.–6 p.m.

*No night time operations

Veterans Day

Monday, Nov. 11

All operations | **CLOSED**

Thanksgiving Day

Thursday, Nov. 28

All operations | **CLOSED**



Thanksgiving Take and Heat

Pick-up available | Tuesday Nov. 26 & Wednesday Nov. 27

Noon–5:00 p.m.

Place your order on Memberplanet by Friday Nov. 22

Refer to the center insert for additional details



DINING

Taco Tuesday

Tuesdays | 4:30–8 p.m.

\$1.25 each

Olé it's Taco Tuesday! Choose from beef, chicken or pork, loaded on soft tortillas or crunchy taco shells, with fresh toppings just the way you like it.

Wing Wednesday

Wednesday | 4:30–8 p.m.

\$.75 per wing

Wing Basket | \$6 for 6 wings & fries

Aomori Eats

Lunch | Monday–Friday

10:30 a.m.–1:30 p.m.

Dinner | Monday–Thursday

4:30–8 p.m.

Sakura Room

Dine in or order to-go. Place an order over the phone at 226-5062 or 0176-77-5062 or order to-go at the door.

Tanuki's

Tuesday–Thursday | 4:30–10 p.m.

Friday | 3:30–10 p.m.

Saturday | 4:30–10 p.m.

Sunday Breakfast Buffet

Every Sunday

9 a.m.–1:30 p.m.

Club Members | \$12.95

Non-Members | \$14.95

Ages 5–11 | \$6.95

Ages 4 & under | FREE

Brunch Add On | \$5.95 per person

Enjoy our weekly traditional Sunday Breakfast, or add on some delicious lunch items for an additional \$5.95 per person. We have an Awesome Waffle Station, all-American breakfast favorites like biscuits and gravy, scrambled eggs, hash browns and bacon or sausage.

ARE ALWAYS ON THE MENU

N
O
V
E
M
B
E
R

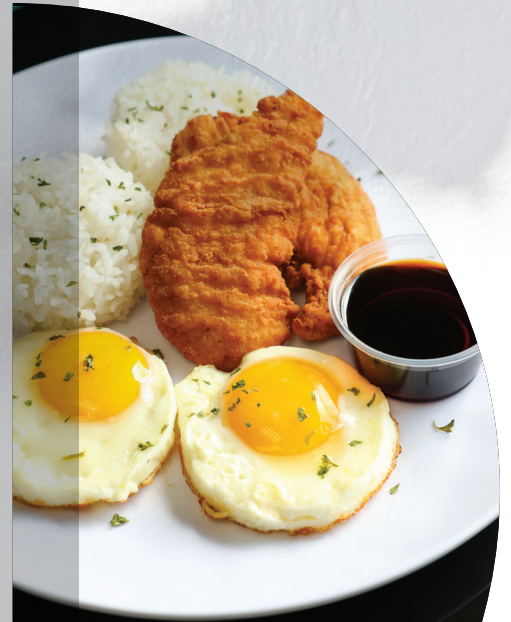
E **Chopped Sandwich**
\$10

Every bite is the perfect bite with the precise combination of ham, turkey, pepperoni, mozzarella cheese, lettuce, tomato and red onions on a delicious hoagie roll. Comes with fries and a 16 oz. drink.



BUMPERS FUSION DINER

Walmsley Bowling Center | BLDG. 627
Maintenance Day | Tuesday, Nov. 5
CLOSED | 5:30 a.m.-5 p.m.



E **Double Cluck Bowl**
\$8

A complementing pairing of both the chicken and the eggs overtop a pile of rice, served with teriyaki sauce. Comes with a 16 oz. drink.

DINING

Specials

FIT PIT

Inside Potter Fitness Center | BLDG. 622
Maintenance Day Early CLOSURE |
Thursday, Nov. 7 at 5 p.m.

E **Chocolate Sunrise**
\$6.50

Yogurt and milk blended with bananas, raspberries and vanilla protein, topped with a chocolate drizzle.





Maple Syrup Latte

Grande Only | \$5

Two shots of espresso mixed with cinnamon infused milk and real maple syrup, topped with whipped cream and a light maple drizzle.



Caramel Apple Spice

Grande Only | \$5

Steamed spiced apple juice complimented with caramel and topped with whipped cream.

*No Espresso



Choco Bites

\$5

Breaded bites filled with chocolate and served with your choice of chocolate or caramel dipping sauce.



ESM CARD USERS

- 1 | Go to any of the listed dining locations
- 2 | Choose any ESM approved menu item
- 3 | Swipe your meal card

Items are ESM approved

Items are not ESM approved



BLDG. 626

Maintenance Day

CLOSED | Monday, Nov. 18

5:30 a.m.–5:30 a.m. the next day

FLYERS



Shrimp & Salmon Soup

\$8.50

A hot and hearty bowl of creamy bisque style shrimp and salmon soup that is served with two pieces of garlic bread.



Meat Pie

\$7.95

An authentic Aussie-style meat pie that consists of a flaky, buttery pie crust bottom and a fluffy puff pastry top. It is filled with beef, onions and a special tomato sauce blend that's baked to perfection.



LAKEVIEW GRILLE

Gosser Golf Course | BLDG. 1464

Maintenance Day

CLOSED | Monday, Nov. 18



LUNNEY Youth Center

BLDG. 112 | 226-3220 | Ages 9-12

CYP-BMS Parent Portal



New users must contact the Lunney Youth Center for access.



Nature Walk at Shimoda Swan Park

Tuesday, Nov. 12
1-5 p.m.
Members only | FREE

Pack your child's favorite fall snacks for them to enjoy on a festive picnic! We're taking youth for a fun fall nature walk through colorful autumn leaves, followed by a picnic in the park. They'll explore the outdoors, enjoying the crisp air and vibrant scenery, before settling down for a picnic. They can also burn off some energy at the nearby playground, making for a perfect day of nature and play!

- Advance registration is required, limited spots are available
- Signed permission slip is required



Fun Fall Cookies

Friday, Nov. 22
3:30-5 p.m.
Lunney Youth Center
Members only | FREE

Join us for festive fall cookie decorating where youth can create their own sweet masterpieces with a variety of colorful frostings and fun toppings. After decorating, they'll warm up with delicious hot chocolate. It's an afternoon filled with creativity, cozy treats and seasonal fun!

Curry for Veterans

Thursday, Nov. 7
Noon
Cheli SAC Parking Lot
Open to all Veterans | FREE

In celebration of Veteran's Day, Cheli SAC will be giving out FREE curry rice bowls to the first 100 veterans who come! This is our simple way of showing appreciation for all veterans' sacrifices and bravery in keeping our country safe and at peace. Thank you for all you do!



CHELI School Age Program

BLDG. 412 | 226-2266 | Ages 5-12

MISAWA

Teen Center

BLDG. 626 | 226-2792 | Ages 13-18



Let's Celebrate World Kindness Day

Wednesday, Nov. 13
4-5 p.m.
Misawa Teen Center
FREE

The Misawa Teen Council/Keystone Club are organizing a thank you flash mob! Teen members will be holding signs to show kindness and appreciation to everyone driving around the base. If you're a teen and want to join us in spreading the good vibes, please contact us at 315-226-2792 or 35FSS.FSY.misawateencenter@us.af.mil.

- Teen members will earn volunteer hours by participating

"Trash to Treasure" Competition

Monday, Nov. 25
3-5 p.m.
Misawa Teen Center
Members only | FREE

In celebration of National Recycle Day, the Misawa Teen Center is hosting a recycling competition for its members. Enjoy refreshments while you turn your trash into treasure by recycling and let your imagination and creativity shine to create an incredible masterpiece! A plaque and certificate will be awarded to the 1st, 2nd and 3rd place winners. Judges will determine the top three choices and vote to decide the final placements.



Fall Harvest Luncheon

Friday, Nov. 22
11:15-11:45 a.m.
FREE

Come join us for our annual Fall Harvest Luncheon. We encourage all families to come grab some delicious food that was prepared by our wonderful kitchen staff and spend some quality time with your child for lunch. We will have an assortment of fall dishes that will bring comfort to any stomach! Fall is all about family and togetherness, so come enjoy some family-style dining with your CDC family.

YOIKO

CDC

BLDG. 10 | 226-4666 | 5 & under

Misawa Crafts

Skills & Trades Center

 @MisawaArtsAndCraftsCenter

GRAPHICS SHOP

The Arts and Crafts center provides etching, laser printing, engraving and sublimation printing services for materials like glass, stainless steel, plastic, wood and so much more! From going away gifts to annual awards, we can make your visions come to life. Visit the Graphics Shop to place your order for your next creation today!

AWARDS & GIFTS

Create a custom award for your squadron competition or maybe a custom gift for a friend as a sentimental goodbye. Stop by the Arts & Crafts Center to gain inspiration and see examples of past projects. Prices vary based on the type of design and material.

PLATE ENGRAVING

Already have an award or going away gift in mind? Customize it with an engraved plate to make it truly memorable with a personal message. Prices vary based on the plate size and length of message.

ENGRAVED POLAR CAMEL TUMBLERS

16 oz. Wine Tumbler | \$20

16 oz. Pilsner | \$18.50

20 oz. Ringneck | \$20

20 oz. Pilsner | \$25

32 oz. Water Bottle | \$35

15 oz. Mug | \$20

Price includes simple 2D silhouette engraving. Available in a limited selection of colors. Additional colors are available by special order, though this may cause a delay in completion time.

PET TAGS

Small Tag, Engraved | \$5

Large Tag, Engraved | \$7

Rhinestone Tag, Engraved | \$10

Sublimation Tag | \$10

T-SHIRT PRINTING

Coming Soon!

HOURS OF OPERATION

Tuesday–Saturday | 10 a.m.–6 p.m.

CLOSED | Sundays, Mondays, US & select JP federal holidays

PACAF Family Days | Noon–5 p.m.

Arts & Center

BLDG. 645 | 226-4279

ADULT CLASSES

BRUSHES & BEVERAGES

Friday, Nov. 22 | 5:30–8:30 p.m.

Social time | 5:30–6 p.m.

Painting begins | 6 p.m.

BLDG. 645

\$25 | Ages 18+

Ages 20+ may consume alcohol

Come by and learn new painting techniques or join us for a night of fun and camaraderie! Basic painting skills are required but this class is open to all levels and abilities. Don't forget to BYOB!

*Sign up by 4:30 p.m. Friday, Nov. 22





BLACK FRIDAY SALE

Friday, Nov. 29
Noon-5 p.m.

ALL craft boxes

30% OFF

PACAF DAY SALE

Ceramics valued \$5 or more

\$2 OFF

KID CLASSES

MINI MONET

Saturday, Nov. 9 | Noon-1:30 p.m.
BLDG. 645 | \$18 | Ages 5-9

A fully instructed class that is dedicated to teaching new skills and techniques to create a beautiful masterpiece. Parental supervision is required.

*Sign up by 11:00 a.m. Saturday, Nov. 9

YOUNG VAN GOGH

Saturday, Nov. 16 | Noon-1:30 p.m.
BLDG. 645 | \$20 | Ages 10+

A fully instructed class that teaches advanced skills and techniques. This class requires basic painting skills, but is open to all levels.

*Sign up by 11:00 a.m. Saturday, Nov. 16



Class sign-ups begin
Friday, Nov. 1

*Please sign up at Bldg. 645 up to one hour before the scheduled class, unless otherwise stated. Advance registration is required as spots are limited. Failure to reach minimum class participation may result in a rescheduled date or cancellation.

Education & Training Office

BLDG. 653, RM. 203 | 226-4201

Monday–Thursday

8 a.m.–Noon • 1–4 p.m.

Friday

8 a.m.–Noon

AMERICAN EDUCATION Week

Monday, Nov. 18–Friday, Nov. 22

American Education Week was created to promote literacy and education in public school systems. It is celebrated the week before Thanksgiving, every year. Join us for the following events as we celebrate the education opportunities available on Misawa AB!

COLLEGE & CUPCAKES

Tuesday, Nov. 19
11:30 a.m.–1:30 p.m.
Grissom Dining Facility (DFAC)

SKILLBRIDGE BRIEFING

Wednesday, Nov. 20 | 1 p.m.

BLDG. 1006 | Personal Development Center

Learn about the SkillBridge program and how to apply. This briefing is open to all branches and is required for Airmen who plan to apply through the Misawa Education Office. We recommend Airmen attend the briefing at least one year prior to their DOS/DOR.

MILTA BRIEFINGS

Thursday, Nov. 21 | 9 a.m.

Additional briefings | Thursday, Nov. 7 • 9 a.m. & Thursday, Nov. 14 • 1 p.m.

BLDG. 653, RM. 204

Military Tuition Assistance (MilTA) Briefings are required for Airmen who are using MilTA for the first time and for Airmen who have been inactive in using their MilTA benefits for over one year.



Overstreet Memorial Library

BLDG. 629 | 226-4083

CLOSURES

Veterans Day | Monday, Nov. 11

Thanksgiving Day | Thursday, Nov. 28



OUR *Heroes'* TREE

Friday, Nov. 1–Saturday, Nov. 30

Join us in showing our appreciation for the sacrifices our service members and their families make by participating in the creation of Our Heroes' Tree. We welcome everyone to decorate the tree with American flags, yellow ribbons, messages and drawings of their heroes.

The Misawa Air Base Retiree Activities Office set up a display highlighting the history of the Vietnam War that will be showcased here at the library. Come out and honor those who fought, while learning something new.

HISTORY OF THE VIETNAM WAR DISPLAY

Friday, Nov. 1–Saturday, Nov. 30

STEM PROGRAMS

Homeschool STEM Day

Wednesday, Nov. 13
11 a.m.–Noon

LEGO® Club

Saturday, Nov. 2
3–4:30 p.m.
All Ages

Kid K'Nex®

Wednesday, Nov. 6
10:30–11:30 a.m.
Ages 3+

3D Pens

Wednesday, Nov. 20
3:30–4:30 p.m.
Ages 7+

WEEKLY STORY TIME

Every Tuesday
10:30–11 a.m.
Ages 2–5

DRIVER'S ED

WINTER REGISTRATION

Register | Tuesday, Dec. 10–Saturday, Dec. 21

Ages 18+ | 9 a.m.–6 p.m.

*Ages 17 & under | 4–6 p.m.

Limited slots available.

*Students under 18 years of age MUST have a parent present to register.

Driving course fee | **\$250

**Additional fees may apply

Class begins | Tuesday, Jan. 7

Class ends | Thursday, April 10

Includes: New Drivers Orientation class, six in-car lessons and one road test.

Sign up at the Auto Hobby Shop.

BLDG. 767
226-4654



GETTING STARTED

Students will complete the online portion of this program on the Nebraska AAA website.



Students MUST bring their AAA Nebraska How To Drive Certificate and payment to be eligible to sign up.

Auto Hobby



Pet Kennel

BLDG. 756 | 226-2228
f @MISAWAPETKENNEL

Monday–Friday

10 a.m.–1:30 p.m. & 2:30–6 p.m.

Saturday

10 a.m.–2 p.m.

CLOSED

Sundays and federal holidays

Reservation required for all services.
Contact us for more information
MisawaPetKennel@gmail.com

YAPPY HOUR

Every Weekday | \$7 per session
(2nd pet 50% off)

10–11:30 a.m. & 2:30–4 p.m.

Dogs in Daycare | **FREE**

Dogs in Boarding | \$7 All sessions

Join us for a waggin' good time as we celebrate Yappy Hour, the best social time a dog can have. We'll make sure your pets have a safe and fun experience with all the toys & treats they deserve. Owner supervision is **NOT** required.

Yappy Hour requirements:

Spayed/Neutered

6 months & older

Liability release form

Proof of current vaccinations
(Rabies, Distemper & Bordetella)



Torii BLDG. 656, RM. 1460
226-3108 | 35FSS.HRO@us.af.mil

NAF HR Office



@NAFHRMISAWA



USAJOBS.GOV

Monday–Friday | 9 a.m.–3 p.m.
CLOSED | Weekends & federal holidays
CLOSED | Thursday, Nov. 14

NAF Employee Benefits

Non-Appropriated Funds (NAF) 401(k) Savings Plan

A retirement savings plan that allows you to set aside a portion of your salary to the Plan with special tax advantages.

- Contribute 1-92% each pay period
- The amount contributed is deducted from your paycheck on a pretax basis.
- FSS makes a matching contribution depending upon the percentage contributed.
- Invest money in any of the available investment options, each with a different potential of risk or reward.
- Pay taxes on contributions or earnings upon withdrawing from the Plan.

More information on the Plan upon becoming eligible to participate.

November is open enrollment season

Current regular NAF employees can enroll, benefits become effective Jan. 2025.

For more information contact NAF HRO



Retirement Program

If you have 12 months of regular NAF service, you are eligible to enroll in the United States Air Force NAF retirement, disability and death benefits. These give you, the retired or disabled employee or your eligible survivor a measure of financial security. The current contribution rate is 1% post-tax (subject to change). You become vested after five years of credited service. If you do not enroll when you are first eligible to, you can enroll at any time. **More information on the program available upon becoming eligible to participate.**



Group Life & Medical Insurance

If you are a regular category employee, you are eligible to enroll in Group Life carried by Metropolitan Life Insurance Company and/or health insurance plan through AETNA (DoD Health Benefits Program). Your health insurance becomes effective the day you sign the enrollment form, whereas you must be employed continuously for one month as a regular employee before your life insurance becomes effective. Your family members may also be eligible for enrollment in the life and health insurance plans. **Contact the HRO for more information regarding benefits.**

Subscribe to the

LEISURE TIMES MAGAZINE

Get the Leisure Times delivered to your P.O. Box every month for FREE! Scan the QR code below to sign up!



BANZAI AWARD



35TH FORCE SUPPORT SQUADRON

- B – BACKING THE WING:** Going above and beyond in backing/supporting the Wing.
- A – ADAPTABLE:** Demonstrating adaptability in tackling challenges.
- N – NOT COMPLACENT:** Avoiding complacency and contributing innovative ideas or processes.
- Z – ZEAL:** Displaying great energy and enthusiasm to accomplish the mission and/or task.
- A – ATTENTIVE:** Paying close attention to customer needs and providing the best Force Support.
- I – INFLUENCE:** Influencing positive change and personal and professional growth for others, the Squadron and/or the community.



Military | TSgt Alex Griego
Unit Deployment Manager | Operations Flight



Civilian | Richa Sasaki
Postal Finance Clerk | Postal Activities Flight



Team | NAF IT Team
Resource Management Flight

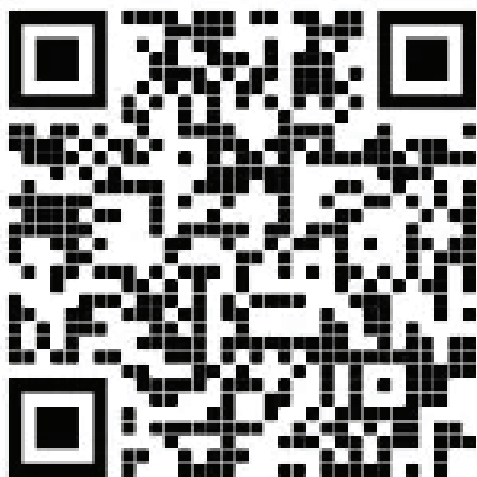
DORM WI-FI



UNLIMITED PLANS STARTING AT \$55.95/MO



Allied Telesis



SSID: Allied Telesis WiFi

FAST & EASY SIGN-UP

- ✓ UNLIMITED DATA USAGE
- ✓ TRUE GIGABIT FIBER SERVICE FROM WIRED PORT
- ✓ NO INSTALLATION FEES
- ✓ NO CONTRACT COMMITMENTS
- ✓ NO ADDITIONAL EQUIPMENT NEEDED
- ✓ CHOOSE FROM SEVERAL PLANS

USE YOUR ACCOUNT EVERYWHERE ALLIED TELESIS WI-FI IS AVAILABLE !

For More Information, Call Us At: 03-6868-2300 or +1-415-692-8300

FSS DIRECTORY

35 FORCE SUPPORT SQUADRON COMMAND SECTION

BLDG. 653
DSN: 226-3008 | Cell: 0176-77-3008
Mon-Fri 7:30 a.m.-4:30 p.m.

35 FSS MARKETING & PUBLICITY

BLDG. 656
DSN: 226-9272 | Cell: 0176-77-9272
Mon, Tues, Thurs & Fri
7:30 a.m.-4:30 p.m.
Closed weekends, federal holidays
& every Wednesday for training

35 FSS NAF HUMAN RESOURCES OFFICE

BLDG. 656
DSN: 226-3108 | Cell: 0176-77-3108
Mon-Fri 7:30 a.m.-4:30 p.m.
Closed the third Thursday of every
month for training, weekends &
federal holidays

CIVILIAN PERSONNEL SECTION

BLDG. 656
DSN: 226-4621 | Cell: 0176-77-4621
Mon-Fri 7:30 a.m.-4:30 p.m.
Closed the third Thurs of every month
for training, weekends &
federal holidays

NAF ACCOUNTING OFFICE

BLDG. 653
DSN: 226-4360 | Cell: 0176-77-4360
Mon-Fri 7:30 a.m.-4:30 p.m.
Private Organizations: 226-2777

MILITARY PERSONNEL SECTION

BLDG. 653
DSN: 226-4002 | Cell: 0176-77-4002
Customer Support
Mon-Fri 9 a.m.-3 p.m.
Closed weekends & federal holidays

AREA 35

Paintball, Archery & Axe Throwing
First Sat of every month
10 a.m.-5 p.m.

Mon-Sat By Reservation
Closes Mid-November, weather
permitting

Unite Event Reservations
Mon-Fri 9 a.m.-1 p.m. & 1-5 p.m.

ARTS & CRAFTS CENTER SKILLS & TRADES CENTER

BLDG. 645
DSN: 226-4279 | Cell: 0176-77-4279
Frame, Graphics, Retail & Ceramics
Tue-Sat 10 a.m.-6 p.m.
PACAF Family Days Noon-5 p.m.
Closed Sun, Mon & federal holidays
Wood Shop
Tue-Fri Noon-8 p.m.
Sat 10 a.m.-6 p.m.
PACAF Family Days Noon-5 p.m.
Closed Sun, Mon & federal holidays

AUTO COMPLEX Auto Hobby Center

BLDG. 767
DSN: 226-4654 | Cell: 0176-53-5181
Emergency/towing: 080-1651-9308
Tues-Sat, 9 a.m.-6 p.m.
Closed Sun-Mon & federal holidays
Pit Stop Garage
BLDG. 965
DSN: 226-9486 | Cell: 0176-53-5181
Mon-Fri 7:30 a.m.-4:45 p.m.
Closed weekends & federal holidays

BASE BEACH & BOATHOUSE

Closed for the season

CHELI SCHOOL AGE CARE

BLDG. 412
DSN: 226-2266 | Cell: 0176-77-2266
Mon-Fri 6:30 a.m.-5:30 p.m.
Closed weekends & federal holidays
PACAF Family Days reservation only

COMMUNITY COMMONS

BLDG. 1006, BAY 1
DSN: 226-4128 | Cell: 0176-77-4128
Mon-Fri 7 a.m.-5 p.m.
Sat-Sun 10 a.m.-6 p.m.
PACAF Family Days 10 a.m.-5 p.m.
Closed on U.S. Federal holidays
Banza's Playground
Bldg. 1006, Bay 2
Mon, Tue, Thu, Fri | 8 a.m.-4:30 p.m.
Wednesday | 11 a.m.-4:30 p.m.
Sat-Sun | 10 a.m.-1 p.m. & 2-5 p.m.
PACAF Family Days 10 a.m.-5 p.m.
Closed on U.S. Federal holidays

EDUCATION & TRAINING SERVICES

BLDG. 653, RM. 203
DSN: 226-4201 | Cell: 0176-77-4201
Mon-Thurs 8 a.m.-Noon, 1 p.m.-4 p.m.
Fri 8 a.m.-Noon
Closed weekends, PACAF Family Days &
federal holidays

FAMILY CHILD CARE

BLDG. 653, RM. 119
DSN: 226-2273 | Cell: 0176-77-2273
Mon-Fri 7:30 a.m.-4:30 p.m.
Closed weekends, PACAF Family Days &
federal holidays

FREEDOM FITNESS CENTER

BLDG. 1962
DSN: 226-9987 | Cell: 0176-77-9987
Mon-Fri 8 a.m.-5 p.m.
Closed federal holidays, PACAF Family Days
and exercises
24 hour access with card

GOSSER GOLF COURSE

BLDG. 1464
DSN: 957-1563 | Cell: 080-1857-0087
Golf Shop
Mon-Fri 7:45 a.m.-5 p.m.
Sat-Sun 6:45 a.m.-5 p.m.
Driving Range
24 hrs a day, 7 days a week
Closed Tuesdays 6-10 a.m. for maintenance
Purchase tokens during Pro Shop hours
All hours are weather permitting

HIMBERG POOL

BLDG. 625
DSN: 226-7665 | Cell: 0176-77-7665
Call ODR for Fish Bowl and PT reservations
Mon, Wed, Fri 6 a.m.-7 p.m.
Tues, Thurs 8 a.m.-7 p.m.
Sat 8 a.m.-4 p.m.
Closed Sat Noon-1 p.m.
PACAF Family Days 10 a.m.-5 p.m.
Closed the last Wed of the month, Sun, US &
select JP federal holidays

IRON HAND COMMUNITY FITNESS

BLDG. 1006, BAY 3
DSN: 226-3982
24 hour access with card only

LEFTWICH PARK

Near Security Hill, open daily, dawn to dusk
DSN: 226-9378 | Cell: 0176-77-9378
Call ODR to make a reservation

LUNNEY YOUTH CENTER

BLDG. 112
DSN: 226-3220 | Cell: 0176-77-3220
Mon, Wed, Thurs, Fri 2:45-5:30 p.m.
Tuesday 1:45-5:30 p.m.
PACAF Family Days 1-5:30 p.m.
Closed weekends & federal holidays

MILITARY & FAMILY READINESS CENTER

BLDG. 656
DSN: 226-4735 | Cell: 0176-77-4735
Mon, Tue, Wed, Fri 8 a.m.-4 p.m.
Thu 8 a.m.-2 p.m.
Closed federal holidays, weekends & the
3rd Thurs each month

MISAWA CLUB

BLDG. 485/486
Administration Office: 226-1736
Cashiers' Cage: 226-9122
Catering Reservations: 226-9124
Administration Office Hours
Mon-Fri 8:30 a.m.-4 p.m.
Catering Office Hours
Mon-Fri 8:30 a.m.-4 p.m.
Catering requests:
misawacatering@gmail.com
Cashiers' Cage Hours
Mon-Thu 9:30 a.m.-6 p.m.
Fri 9:30 a.m.-10 p.m.
Closed on Sat
Slot Room Hours
Mon 8 a.m.-8 p.m.
Tue-Thu 8 a.m.-10:30 p.m.
Fri-Sat 8 a.m.-2 a.m. the next day
Sun 8 a.m.-5 p.m.
Closed on federal holidays

MISAWA INN

BLDG. 670
DSN: 222-0282 | Cell: 0176-66-0282
24 hours a day, 7 days a week

MISAWA ITT

BLDG. 485
DSN: 226-3555 | Cell: 0176-77-3555
Mon-Fri 9 a.m.-4 p.m.
Closed weekends & federal holidays

MISAWA PET KENNEL

BLDG. 756
DSN: 226-2228 | Cell: 0176-77-8255
Mon-Fri 10 a.m.-6 p.m.
Sat Closed until further notice
Closed every day from 1:30-2:30 p.m.
Closed Sun & federal holidays

MISAWA POST OFFICE

BLDG. 519
DSN: 226-3492 | Cell: 0176-53-5181
Closed Sun & federal holidays
Pick Up Window
Mon-Fri 9 a.m.-6 p.m.
Sat & PACAF Family days 10 a.m.-4 p.m.
Customer Service
Mon-Fri 10 a.m.-5 p.m.
Official Mail Center
Mon-Fri 10 a.m.-6 p.m.
Finance (includes shipping)
Mon-Fri 9 a.m.-5 p.m.

MISAWA TEEN CENTER

BLDG. 626
DSN: 226-2792 | Cell: 0176-77-2792
Mon-Fri 1:30-5:30 p.m.
Hours vary on event nights
Closed weekends, federal holidays
& PACAF Family Days

OUTDOOR RECREATION CENTER

BLDG. 486
DSN: 226-9378 | Cell: 0176-77-9378
Mon, Tues, Thu & Fri 9 a.m.-6 p.m.
Sat 8 a.m.-2 p.m.
PACAF Family Days 10 a.m.-5 p.m.
Closed Sun, Wed & federal holidays

OVERSTREET MEMORIAL LIBRARY

BLDG. 629
DSN: 226-4083 | Cell: 0176-77-3068
Mon-Sat 10 a.m.-6 p.m.
Closed Sundays & federal holidays

PROFESSIONAL DEVELOPMENT & FIRST TERM AIRMAN CENTER

BLDG. 1006
DSN: 226-7829 | Cell: 0176-77-7829
Mon-Fri 7:30 a.m.-4:30 p.m.
(by appointment only)

POTTER FITNESS CENTER

BLDG. 622
DSN: 226-1964 | Cell: 0176-77-1964
Mon-Fri 5 a.m.-10 p.m.
Sat & Sun 8 a.m.-5 p.m.
Federal holidays & PACAF Family Days
24 hour access with card

THE LODGE

BLDG. 1482
DSN: 226-9378 | Cell: 0176-77-9378
Open for private reservations
Noon-10 a.m. next day
Call ODR to make a reservation

WALMSLEY BOWLING CENTER

BLDG. 627
DSN: 957-1554 | Cell: 0176-77-8255
then dial 1-281-657-1554
Sun 11 a.m.-7 p.m.
Mon-Thu 11 a.m.-9 p.m.
Fri & Sat 11 a.m.-11 p.m.
Federal holidays Noon-7 p.m.
Closed first Tuesday of the
month for maintenance

WEASELS' DEN

BLDG. 973
Mon-Fri 5 a.m.-8 p.m.
Sat & Sun 8 a.m.-5 p.m.
PACAF Family Days 8 a.m.-5 p.m.
Closed on federal holidays
Call ODR for Barn & Soccer Field reservations

YOIKO CHILD DEVELOPMENT CENTER

BLDG. 10
DSN: 226-4666 | Cell: 0176-77-4666
Mon-Fri 6:30 a.m.-5:30 p.m.
Closed weekends, federal holidays &
PACAF Family Days

BUMPERS FUSION DINER

Walmsley Bowling Center | BLDG. 627
DSN: 957-1553 | Cell: 0176-77-8255
then 1-281-657-1553
Mon-Thu 6 a.m.-8:30 p.m.
Fri 6 a.m.-10:30 p.m.
Sat 8 a.m.-10:30 p.m.
Sun 8 a.m.-6:30 p.m.

FALCON FEEDER DINING FACILITY

BLDG. 3262
DSN: 226-1636 | Cell: 0716-77-1636
Breakfast 6:30-8 a.m.
Lunch 10:30 a.m.-1 p.m.
Dinner 6-8 p.m.
Closed weekends & federal holidays

FIT PIT

Potter Fitness Center | BLDG. 622
DSN: 957-1561 | Cell: 0176-77-8255
then 1-281-657-1561
Mon-Fri 7 a.m.-7 p.m.
Closed first Thurs of every month at
5 p.m.

FLIGHT KITCHEN DINING FACILITY

BLDG. 3262
DSN: 226-3889
Cell: 080-8207-0346
24 hours a day, 7 days a week
Limited to crew members and anyone
in a flight status as crew member
or passengers from 1:30-4 a.m.
call 080-8207-0346.

FLYERS

BLDG. 626
24 hours a day, 7 days a week
5:30 a.m.-9 p.m. | Full Menu
9 p.m.-5:30 a.m. | Grab&Go Only
DSN: 226-8255
then 1-281-657-1555
From a Japanese Phone: 0176-77-8255
then 1-281-657-1555
Closed the second Mon of every month |
5:30 a.m.-5:30 a.m. the next day

GRISSOM DINING FACILITY

BLDG. 624
DSN: 226-3997
Breakfast Mon-Fri 5:30-8 a.m.*
Lunch Mon-Fri 10:30 a.m.-1:30 p.m.*
Dinner Mon-Fri 4:30-7:30 p.m.*
Midnight Meal Everyday
10 p.m.-12:30 a.m.*
Brunch Sat-Sun 6:30 a.m.-1 p.m.*
Dinner Sat-Sun 5-7 p.m.*
*Hours subject to change

LAKEVIEW GRILLE

Gosser Golf Course | BLDG. 1464
DSN: 957-1564 | Cell: 0176-77-8255
then dial 1-281-657-1564
Every day 10:30 a.m.-2 p.m.
Closed the third Mon of every month

AOMORI EATS

Misawa Club | BLDG. 485
DSN: 226-5062 | Cell: 0176-77-5062
Sunday Breakfast 9 a.m.-2 p.m.
Aomori Eats Lunch
Mon-Fri 10:30 a.m.-1:30 p.m.
Aomori Eats Dinner
Mon-Thu 4:30-8 p.m.
First Mon of every month
Lunch Buffet only 10:30 a.m.-1:30 p.m.

TANUKI'S

Misawa Club | BLDG. 485
Fri 3:30-10 p.m.
Sat 4:30-10 p.m.

TOMODACHI CAFE

Misawa Club | BLDG. 485
DSN: 226-5062
Mon-Fri 7 a.m.-1:30 p.m.
Closed First Mon of every month

WILD WEASELS' BAR & GRILL

Misawa Club | BLDG. 485
DSN: 226-5062
Cell: 0176-77-5062
Fri 4:30-9 p.m.
Sat 11 a.m.-2:30 p.m. & 4:30-9 p.m.

Administrative

Tear here to hang on your fridge!

FOOD

NOVEMBER

2024

SUNDAY	MONDAY	TUESDAY	WEDNESDAY	THURSDAY	FRIDAY	SATURDAY
<p><i>Save the Date</i></p>  <p>HOLIDAYS AROUND THE WORLD THREE LIGHTNING CEREMONY FRIDAY, DEC. 6 5-7 P.M.</p> <p>WINNERBEST SATURDAY, DEC. 7 9 A.M.-3:30 P.M.</p>						
<p>3 Bowling: Sunday Family Day Club: Breakfast Buffet</p>	<p>4 Club: Aomori Eats M&FRC: Remote Tour Brief Transition Workshop (3 day)</p>	<p>5 Bowling: Maintenance Day Club: Aomori Eats Taco Tuesday Latin Dance Night Library: Story Time M&FRC: Sponsorship Training Transition Workshop (3 day) Stress Holiday Spending</p>	<p>6 Club: Aomori Eats Wing Wednesday Library: Kid K'nex M&FRC: Right Start Pre-Deployment Transition Workshop (3 day) Planning ODR: The Best of Japan (departs)</p>	<p>7 Bowling: Kids Eat Free Night Club: Aomori Eats EDU: MIITA M&FRC: Employment (2 day) Cooking 101 Divorce Marriage PCS Promotion Vesting in TSP Holiday Spending SAC: Curry for Veterans</p>	<p>8 Bowling: Laser Storm Airmen's Alleys Club: Aomori Eats Tanuki's Family Day Buffet LYC: Nature Walk at Shimoda Swan Park M&FRC: Reintegration Employment (2 day) Planning ODR: Family Fun Night Com Com: Friday Night Bingo</p>	<p>9 Arts & Crafts: Mini Monet Bowling: Laser Storm Airmen's Alleys ITT: Ryusendo Caves</p>
<p>10 Bowling: Sunday Family Day Club: Breakfast Buffet</p>	<p>11 SPECIAL EVENT Chapel Hart Bowling: Veterans Bowl Free ODR: The Best of Japan (returns) Mt. Eboshi Summit Hike M&FRC: Remote Tour Brief</p>	<p>12 Bowling: Red Pin Tuesday Club: Aomori Eats Taco Tuesday Latin Dance Night Library: Story Time M&FRC: Pre-Separation</p>	<p>13 Club: Aomori Eats Wing Wednesday Com Com: Brainstormer Trivia Library: Home School STEM Day M&FRC: Right Start Emergency Preparedness Pre-Deployment MTC: World Kindness Day</p>	<p>14 Bowling: Kids Eat Free Night Club: Aomori Eats Family Member Social EDU: MIITA M&FRC: Career & Confidential Conflict Resolution Bundles for Babies Spouse Monthly Meet up</p>	<p>15 Bowling: Laser Storm Ladies' Night Airmen's Alleys Club: Aomori Eats Tanuki's M&FRC: Reintegration Cultural City Tour Career & Confidential Emergency Preparedness ODR: Family Fun Night Lightspeed Paintball</p>	<p>16 SPECIAL EVENT Outdoor Fitness Challenge & Turkey Trot Arts & Crafts: Young Van Gogh Bowling: Laser Storm Airmen's Alleys ITT: Matsushima Tohoku Free Blades ODR: West Coast Aomori Adventure</p>
<p>17 Bowling: Sunday Family Day Club: Breakfast Buffet ODR: SAPI Michinoku Coastal Trail Beach & Peak Hike</p>	<p>18 Club: Aomori Eats M&FRC: Remote Tour Brief Week (begins) Post Office: Letters to Santa (begins)</p>	<p>19 Bowling: Red Pin Tuesday Club: Aomori Eats Taco Tuesday Latin Dance Night Library: Story Time M&FRC: Pre-Separation Credit Management</p>	<p>20 Club: Aomori Eats Wing Wednesday EDU: SkillBridge Library: 3D Pens M&FRC: Right Start Pre-Deployment Credit Management</p>	<p>21 SPECIAL EVENT Trivia Night: Misawa Con Theme Bowling: Kids Eat Free Night Club: Aomori Eats EDU: MIITA</p>	<p>22 Arts & Crafts: Brushes & Beverages Bowling: Laser Storm Airmen's Alleys CDC: Fall Harvest Luncheon Club: Aomori Eats Tanuki's EDU: American Education Week (ends) LYC: Fun Fall Cookies M&FRC: Reintegration Cultural City Tour ODR: Pool Party Com Com: Friday Night Bingo</p>	<p>23 SPECIAL EVENT Friendship Market Bowling: Laser Storm Airmen's Alleys</p>
<p>24 Bowling: Sunday Family Day 9 Pin No-Tap Tournament Club: Breakfast Buffet</p>	<p>25 Club: Aomori Eats M&FRC: Remote Tour Brief MTC: "Trash to Treasure" Competition</p>	<p>26 Bowling: Red Pin Tuesday Club: Aomori Eats Taco Tuesday Latin Dance Night Thanksgiving To Go pick-up Library: Story Time ODR: Three Capitals (departs)</p>	<p>27 Club: Aomori Eats Wing Wednesday Thanksgiving To Go pick-up M&FRC: Right Start Post office: Holiday hours begin</p>	<p>28 SPECIAL EVENT DFAC Thanksgiving Meal & Bake-Off <i>Thanksgiving</i> </p>	<p>29 Arts & Crafts: Black Friday Sale Bowling: Black Friday Sale Laser Storm Airmen's Alleys Club: Aomori Eats Tanuki's Golf: Black Friday Sale (begins) ITT: Black Friday Sale M&FRC: Reintegration Military Family Scavenger Hunt (ends)</p>	<p>30 Bowling: Movie & Bowl Laser Storm Airmen's Alleys Library: Our Heroes' Tree (ends) History of the Vietnam War Display (ends)</p>

Tear here to hang on your fridge!



CELEBRATING
VETERANS



Your Service Inspires Ours

Everything we do is inspired by the military service and sacrifice of our members. We're grateful for our 2 million+ Veteran members and their commitment to our country—and we're proud to support them with member-exclusive offers, financial resources and award-winning service.



ARMY
MARINE CORPS
NAVY
AIR FORCE
SPACE FORCE
COAST GUARD
VETERANS



Our Members Are the Mission

See All We Do for You
navyfederal.org/veterans

Navy Federal is federally insured by NCUA. © 2024 Navy Federal NFCU 14435 (7-24)

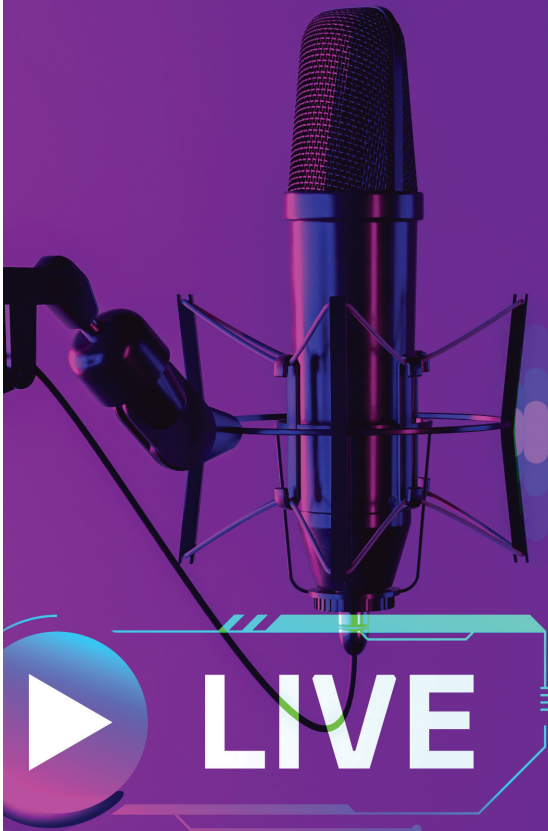
ON AIR

FSS HOUR

EVERY WEDNESDAY
7-8 a.m.

on AFN 1575 **THE EAGLE**

Tune in every Wednesday morning to find out what's happening with 35th FSS on Misawa, Air Base. **OUTDOOR RECREATION** is featured on the first Wednesday of every month. **YOUTH PROGRAMS** is featured on the second Wednesday of every month.



35TH FORCE SUPPORT SQUADRON

WINNING WEDNESDAY

If you are not following us on social media then you are missing out!

Winning Wednesday is your weekly chance to win a **\$50 FSS GIFTCARD**. To enter, simply comment on our post on Facebook & Instagram and a random submission will be selected as the **WINNER!**


35FSS
.COM



@35FSS



@MISAWAFSS

Let us handle ALL OF YOUR CAR NEEDS!

Car Rental

¥4,000-

*Yellow Plate 12hrs

Ask About Our Paint
and Body Work

- ▶ Used Car Sales
- ▶ Repair
- ▶ U.S. Forces Car Insurance
- ▶ Towing available ON BASE
- ▶ Free Title Transfer
- ▶ Road Tax
- ▶ Vehicle Junking

*Let us know if you live off base.



Used Car Center & Insurance

Commercial: 0176-53-5959

Monday-Friday | 8:30 a.m. - 5:30 p.m.

Saturday | 8:30 a.m. - 2 p.m.



Lucky Car Insurance

Bldg. 653, Room 126

Lucky's Used Car Center

6-110-5, Okamisawa, Misawa, Aomori

Paid advertisement. No federal endorsement of advertiser(s) intended.

Moving into an
Off-Base House??
Looking for stable
Internet Provider!?

WOW!
**Easy Sign-up
Online**



HeroNet



Toll Free 0120-711-566

From US 011-81-176-53-5136



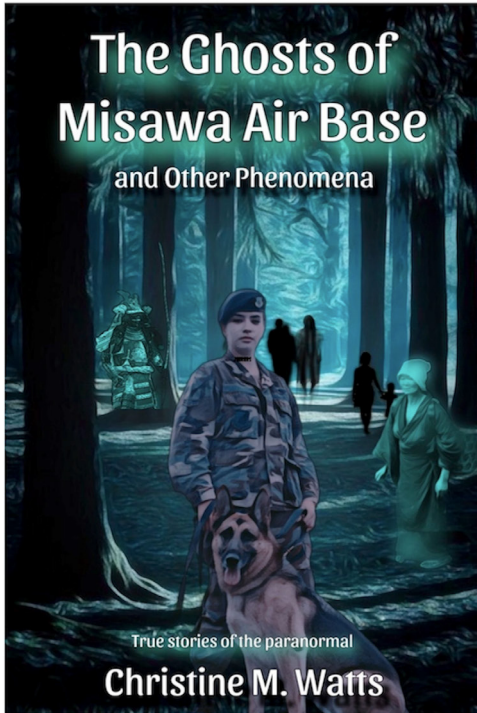
helpdesk@heronet.jp

Home Internet/Mobile Hotspot/SIM

Paid advertisement. No federal endorsement of advertiser(s) intended.

TRUE STORIES OF THE PARANORMAL

The Ghosts of Misawa Air Base and Other Phenomena



True stories of the paranormal

Christine M. Watts

AVAILABLE ON
AMAZON



No federal endorsement of advertiser intended

Sponsorship & Advertising Opportunities on Misawa Air Base!

With a population of **over 11,000**, our community enjoys the many opportunities to explore Japan and the Pacific region.

Advertise your business and establish brand awareness by advertising on Misawa Air Base!



Visit
35fss.com/ads
to learn more.



WINTER FEST

Saturday, Dec. 7

9 a.m.–3:30 p.m.

Weasels' Den | BLDG. 973

FREE | All Ages



Sponsored by



No federal endorsement of advertiser(s) intended.



SAVE THE DATES

Shop till you drop at Misawa's biggest winter shopping event. Browse through premium equipment from big name brands, talk to local resorts, browse through Home-Based Businesses (HBBs) & more!

Join us for Misawa's very own Kris Kringle Market and tree lighting ceremony. Take photos with Santa and shop from HBBs & Private organizations.

TREE LIGHTING CEREMONY

Friday, Dec. 6

5–7 p.m.

Risner Circle | FREE entry
All Ages

35 FSS / FSK
UNIT 5019, APO, AP 96319-5019

