

Leisure

T I M E S



Holidays Around the World Tree Lighting Ceremony



Friday, Dec. 6 | 4:30–6:30 p.m.
Risner Circle | FREE Entry | All Ages

Join us for Misawa's very own
Kris Kringle Market and
tree lighting ceremony.
Take photos with Santa
and shop from HBBs &
Private organizations.



Winter Fest

Saturday, Dec. 7 | 9 a.m.–3:30 p.m.
Weasels' Den | BLDG. 973
FREE | All Ages

Sponsored by



No federal endorsement of
advertiser(s) intended.



Shop till you drop at
Misawa's biggest winter
shopping event. Browse
through premium equipment
from big name brands, talk to
local resorts, browse through
Home-Based Businesses
(HBBs) & more!





Get the Leisure Times for FREE right to your mailbox! Scan QR code to sign up



FIND BANZAI & WIN!

Email his location to misawa.marketing@us.af.mil for a chance to win a \$50 FSS gift card. Banzai was on page 13 in the November Leisure Times.

35fss.com [@MisawaFSS](https://www.instagram.com/MisawaFSS) [@35FSS](https://www.facebook.com/35FSS)

DEC CONTENTS



12 Days of Cheer
Page 18-19

Command

Commander, 35th Fighter Wing

Col Paul T. Davidson

Commander, 35th Mission Support Group

Col Jonathan B. Bell

Commander, 35th Force Support Squadron

Maj Jessica B. Richmond

Deputy, 35th Force Support Squadron

Mr. Stefan Kelly

Marketing & Publicity

Marketing Director/Managing Editor

Kim Tato

Communications Specialists

Patricia Snow

Leanna Duff

Samantha Nelson

Commercial Sponsorship

Ayub Spencer

Commercial Artist

Wakouko Sato

Design Concept

Illustrators

Kazunori Takahashi

Mami Takabatake

Taichi Tsuda

Find Banzai Winner

Nov. 2024

Mia Cruz



WANT TO PURCHASE AD SPACE IN THE LEISURE TIMES?

misawa.marketing@us.af.mil

The Leisure Times is designed to entertain and inform the Misawa Air Base community about 35th Force Support Squadron facilities. Opinions expressed in the Leisure Times do not necessarily represent those of the U.S. Air Force. All submissions are subject to editing prior to printing.

Culture & Travel

6 ITT Tours

8 ODR Tours

Resources

4 Post Office • Holiday Hours • Sunrise Shipping

22 Military & Family Readiness Center Programs

24 Education & Training • MILTA • SkillBridge Briefing • Managing Your (MY) Education Workshop

25 Overstreet Library

26 Auto Hobby • Driver's ED

27 Pet Kennel

28 NAF HRO • FSS NAF Job Focus

29 Banzai Award

31 FSS Directory

32 FSS Event Calendar

Entertainment

5 Polar Express • Friday Night Bingo • Brainstormer Trivia • Holidays Around the World Tree Lighting Ceremony

7 Christmas Movie & Bowl • 9 Pin No-Tap Tournament • Airmen's Alleys • Red Pin Tuesday • Laser Storm

9 Winterfest

10 Pool Party • Family Fun Night • The Lodge • Tow Rope Operations

12 New Year's Eve Party • Latin Dance Nights • Holiday Membership Night

18 12 Days of Cheer

Learn & Create

14 Brushes & Beverages • Ceramics • Lamination • Photo Printing

25 STEM Programs

Fitness & Sports

11 Golf Pro Tips • Neon

Spin-A-Thon • The Running Clinic

20 Youth Gymnastics • Volunteer Coaches Needed

Dining

4 DFAC Christmas Meal

7 Kids Eat FREE Night

12 Brunch with Santa • Aomori Eats

• Sunday Breakfast Buffet • Taco Tuesday • Wing Wednesday • Tanuki's

16 December Dining Specials

Youth & Family

4 Santa's Workshop • Letters to Santa Program

7 Kids' New Year's Eve Bash • Christmas Movie & Bowl

15 Young Van Gogh • Mini Monet

20 Nightmare Before Christmas • Holiday Shopping Field Trip • Pajama Cookie Decorating • Winter Wonderland Dance • Ornament Decorating with Parents • Gymnastics

25 Christmas Story & Craft Time



Christmas Meal

Page 4



Brunch with Santa

Page 12



New Year's Eve Party

Page 12

Holiday Hours

Friday, Nov. 29–Friday, Jan. 10

Parcel Pick-up Window Open

Monday–Friday | 10 a.m.–7 p.m.
Saturday | 10 a.m.–4 p.m.

Finance Window

Monday–Friday | 10 a.m.–6 p.m.

Official Mail

Monday–Friday | 10 a.m.–5 p.m.

Closures/Special Hours

Family Days

Tuesday, Dec. 24 | Parcel Pickup Window
Open | 10 a.m.–4 p.m.

Tuesday, Dec. 31 | Parcel Pickup Window
Open | 10 a.m.–4 p.m.

Christmas

Wednesday, Dec. 25 | CLOSED

New Year's Day

Wednesday, Jan. 1 | CLOSED

Mailing Dates

MPS & USPS Ground® | Monday, Dec. 2

USPS Priority® / First Class® | Monday, Dec. 9

USPS Express® | Monday, Dec. 16

MISAWA Post Office

BLDG. 519 | 226-3492

Santa's Workshop



Santa's Workshop

Saturday, Dec. 7 | 10 a.m.–1 p.m.

Post Office Lobby

Get ready for a magical time as we write our letters to Santa. Enjoy snacks and drinks joined by special guests from the North pole to help make your letter extra special. Fill your day with festive cheer, scan the QR code to sign up.

Letters to Santa Program

Now–Friday, Dec. 13

Letters are free of charge, no postage! Santa letter instructions will be on the Letters to Santa Dropbox in the Post Office lobby.

Sunrise Shipping

*Bulk Shipping
five packages or more

Monday–Friday
9–10:30 a.m.

Appointments allow patrons to pick times that work best for your schedule.

*Please complete your customs forms prior to your scheduled time. Scan the QR code to make your appointment.

Sunrise Shipping



Grissom DINING FACILITY

BLDG. 624 | 226-3997

Wednesday, Dec. 25 10:30 a.m.–1 p.m.

CHRISTMAS MEAL

Entrées

- Roast Turkey
- Prime Rib
- Baked Ham
- Sweet Potato Casserole
- Mashed Potatoes & Gravy
- Cornbread Dressing
- Garlic Sautéed Spinach
- Corn
- Olive Oil Braised Carrots

- ロースターキー
- プライムリブ
- ベイクドハム
- スウィートポテトキャセロール
- マッシュドポテト
- コーンブレッドドレッシング
- ほうれん草のガーリックソテー
- コーン
- ニンジンのオリーブオイル煮



Community Commons



Holidays Around the World Tree Lighting Ceremony

Friday, Dec. 6
4:30-6:30 p.m.
All Ages | FREE
Risner Circle

Gather 'round for Misawa's tree lighting where we recognize different holidays of the season before our annual tree lighting ceremony. Enjoy FREE hot chocolate, s'mores and cookies. Take photos with Santa and shop at Home Based Businesses (HBBs) and private organizations at our Kris Kringle Market.

BLDG. 1006, Bay 1
226-4128



Brainstormer Trivia Night

Wednesday, Dec. 11
Starts | 6 p.m.
All Ages | FREE
Ages 20+ to consume alcohol

Trivia will be every second Wednesday of the month. You will compete in 6 rounds of trivia for cash prizes including: POP, Pictures, Matching, General Knowledge, Know-it-all and Themes. You may bring your own snacks and beverages.

Polar Express

Saturday, Dec. 21 | 5-8 p.m.
All Ages | FREE

Join us for an evening of magic as we watch "The Polar Express," sip hot chocolate and BELIEVE in the holiday spirit. Holiday pajamas are highly encouraged. FREE hot chocolate and popcorn will be provided.

3

4

Friday Night Bingo

Friday, Dec. 27
Starts | 7:30 p.m.
BLDG. 1006, Bay 1
Pre-sale | \$15
Day of Event | \$20
Ages 18+

Community Commons presents Friday Night Bingo! Bring your own food and drinks.

AOMORI BIG BUDDHA

Saturday, Jan. 4 | On sale Wednesday, Dec. 4
Departs | 8:30 a.m.
Returns | 5 p.m.
Ages 16+ | \$35
Ages 6-15 | \$25
Ages 5 & under | \$15

Visit Aomori Showa Daibutsu, also known as the Big Buddha in Aomori. This is the tallest seated Buddha in Japan which was built in 1984 and is surrounded by beautiful natural greenery.

TOKYO SUMO

Friday, Jan. 17-Monday, Jan. 20
On Sale Now!
Departs | 6:45 a.m.
Returns | 6 p.m.

Enjoy a traditional Sumo wrestling tournament and a Dohyo-iri (entering the ring) ceremony, as well as explore Tokyo on your own for one free day!

Includes: Round-trip transportation by bus, three-night stay at The New Sanno Hotel and an English-speaking tour escort

Single Room

1 Person | \$520/person
2 People in Room | \$420/person

Double Room

1 Person | \$620/person
2 People in Room | \$440/person
3 People in Room | \$420/person
4 People in Room | \$380/person

King Suite

1 Person | \$720/person
2 People in Room | \$490/person
3 People in Room | \$460/person
4 People in Room | \$420/person

Ages 2 & under | \$100*
*No Sumo ticket and no bed

TOHOKU FREE BLADES ICE HOCKEY GAME

Saturday, Jan. 11
On sale Wednesday, Dec. 11
Departs | 3:15 p.m.
Returns | 9 p.m.
Ages 16+ | \$25
Ages 3-15 | \$20
Ages 2 & under | \$10

Watch the Tohoku Free Blades take the ice as they compete for the Asia League Ice Hockey Japan Cup.

Includes: Round-trip transportation and reserved seat

HIROSHIMA 4 DAYS

Friday, Jan. 17-Monday, Jan. 20
On Sale Now!
Departs | 9 a.m.
Returns | 6:45 p.m.
Ages 5+ | \$720
Ages 3-4 | \$470 *No bed

Ages 2 & under | \$100 *No bed, No seat
Hiroshima is known as "broad island," founded in the 16th century as a castle town. Explore Hiroshima's ropeway, Peace Park, Hiroshima Peace Memorial Museum, Hiroshima castle, Miyajima, Kure city or Iwakuni city.

Includes: Round-trip transportation by air, three nights of accommodations, breakfast, bus, ferry fee and ropeway fee

TSUGARU TETSUDO STOVE TRAIN

Saturday, Jan. 25
On sale Wednesday, Dec. 24
Departs | 8 a.m.
Returns | 7:30 p.m.
Ages 12+ | \$60
Ages 5-11 | \$50
Ages 1-4 | \$30
Ages 11 months & under | \$15*

*Does not include craft fee for ages 4 & under

Enjoy a ride on the classic Tsugaru Stove Train that has been in service since 1940. The train has a nostalgic atmosphere with a coal potbelly stove inside, wooden window frames and wooden floors. You will take in breathtaking winter scenery on your way to Kanayama City where you will make your own ceramic mug or plate.

MISAWA ITT January

BLDG. 485 | 226-3555

 @MisawaITT

Charter Bus

All organizations interested in chartering a bus for a tour should stop by ITT to make reservations. Reservations are accepted up to 90 days in advance of the trip date and are taken on a first come, first served basis.

Happy Birthday

from Misawa ITT!
Save up to \$10 on any local tour scheduled during your birth month, limit one per individual.

Hours of Operation

Monday-Friday
9 a.m.-4 p.m.
CLOSED | Saturdays,
Sundays & federal holidays.
For more information
call 226-3555

Departs | 7:30 p.m. on the first day
Returns | 6 a.m. on the last day

Enjoy the largest winter festival in Japan! See hundreds of beautiful snow statues and ice sculptures at Odori Park and Susukino Street. There is also plenty of shopping in downtown Sapporo.

Includes: Round-trip transportation, hotel stay with breakfast and tour escort

Tour A

Monday, Feb. 3-Thursdays, Feb. 7
On Sale Now!

Tour B

Tuesday, Feb. 4-Saturday, Feb. 8
On Sale Now!

Tours A and B Includes: Round-trip transportation by bus and ferry, two-night hotel stay, two-night on a ferry (private room), three breakfasts, a dinner at Sapporo Beer Garden, Otaru city visit and tour escort

Tour C

Wednesday, Feb. 5-Sunday, Feb. 9
On Sale Now!

Includes: Round-trip transportation by air from Misawa Airport, four-night hotel stay, four breakfasts and tour escort

Tour E

Friday, Feb. 7-Sunday, Feb. 9
On Sale Now!

Includes: Round-trip transportation by bus and air from Misawa Airport, two-night hotel stay, two breakfasts and tour escort

Sapporo SNOW FESTIVAL

Single Room

Adult | \$660/person

Room with two beds**

Adult | \$610/person
Child | \$530/person

**Infant/Toddler 2 &
under | \$110 (without bed)
same price for any room

Room with three beds**

Adult | \$640/person
Child | \$560/person



BLDG. 627 | 957-1554

Walmsley BOWLING CENTER

CLOSURES & HOLIDAY HOURS

Tuesday, Dec. 3 | Maintenance Day | CLOSED
Tuesday, Dec. 24 | Christmas Eve | 11 a.m.–4 p.m.
Wednesday, Dec. 25 | Christmas Day | CLOSED
Tuesday, Dec. 31 | New Year's Eve | 11 a.m.–9 p.m.
Wednesday, Jan. 1 | New Year's Day | CLOSED



CHRISTMAS MOVIE & BOWL

Saturday, Dec. 21
7–11 p.m.

Featuring holiday movies that YOU get to choose.

Scan the QR to cast your vote



9 PIN NO-TAP TOURNAMENT

Last Sunday of every month
Noon
*\$25 per person
Ages 18+

Get ready for the ultimate bowling showdown with three intense rounds of action! Knock down 9 pins on your first ball for a strike (8 pins for ladies) and feel the thrill as you compete for the top spot and a cash prize! A minimum of ten players is needed to bowl. The bowling lane pattern difficulty changes every month.

*Shoe rentals not included, cash only

Sign up



KIDS' NEW YEAR'S EVE BASH

Tuesday, Dec. 31
6–9 p.m.

Balloon Drop | 8:30 p.m.
\$40 | per lane (up to 6 people)

Ring in the New Year with the whole family at Walmsley Bowling Center. Enjoy an evening of unlimited bowling and celebrate with a BALLOON DROP and DOOR PRIZE DRAWINGS!

- Add a Party Platter and fountain drinks for just \$35!
- **Reservations are required.**



Red Pin Tuesday

Tuesdays | 11 a.m.–9 p.m.
\$1 games & \$1 shoe rentals

If you get a strike with a red headpin, you win a FREE game! For verification, you must notify the desk that you have a red headpin prior to rolling the frame.

Kids Eat Free Night

Thursdays | 5–8:30 p.m.
Ages 12 & under

Take the night off from cooking dinner and bring the family to Bumpers Fusion Diner! Get a FREE kids meal for each purchased adult combo meal.

Laser Storm Bowling

Fridays & Saturdays
7–11 p.m.

We turn the lights down and the music up! Grab your friends and "glow" bowling while requesting your favorite songs! This is open to all patrons, however explicit and adult-themed music and videos may be played.

Airmen's Alley

Fridays & Saturdays | 7–11 p.m.
Ages 18+ | E6 & below only

E1-4 | \$15
E5-6 | \$25

Enjoy unlimited games and shoe rentals all night long! You must show your ID to bowl.

Recurring Events



OUTDOOR RECREATION CENTER

BLDG. 486 | 226-9378

HOLIDAY HOURS

Outdoor Recreation Center

CLOSED | Saturday, Dec. 7 | Winterfest
10 a.m.-5 p.m. | Tuesday, Dec. 24
CLOSED | Wednesday, Dec. 25 | Christmas Day
10 a.m.-5 p.m. | Tuesday, Dec. 31
CLOSED | Wednesday, Jan. 1 | New Year's Day

Weasels' Den

5 a.m.-Noon | Friday, Dec. 6 | Winterfest set up
9 a.m.-5 p.m. | Saturday, Dec. 7 | Winterfest
8 a.m.-5 p.m. | Tuesday, Dec. 24
CLOSED | Wednesday, Dec. 25 | Christmas Day
8 a.m.-5 p.m. | Tuesday, Dec. 31
CLOSED | Wednesday, Jan. 1 | New Year's Day

ODR WINTER HOURS

In effect Sunday, Dec. 1

Monday, Tuesday, Thursday & Friday
9 a.m.-6 p.m.
Wednesday | Noon-6 p.m.
Saturday | 8 a.m.-2 p.m.
PACAF Family Days | 10 a.m.-5 p.m.
CLOSED | Sundays & federal holidays

January Adventures on Sale Now!

*RecOn discount prices are for active duty military and their family members assigned to Misawa Air Base. Verification in the form of a military/family member ID must be provided at time of enrollment.

**Those under 18 years of age must have a parent or guardian participating.

Fun Bus

Sundays | Jan. 5, 12 & 26

Departs | 8 a.m.

Returns | 6:30 p.m.

\$85 per person | \$45 RecOn* | \$25 ride along

**All Ages

Grab your friends and/or family as we visit various resorts in Northern Tohoku. These trips will rotate between the larger resorts of APPI, Hachimantai and Okunakayama Kogen. Sign up early, as these seats go fast!

Includes: Transportation, Adventure Guide, ODR ski/snowboard rental & lift ticket (if paying regular or RecOn price)

- ODR ski/snowboard rentals are available on a first come, first serve basis. Premium rentals are NOT included.
- \$25 ride along reservations are available. ODR will NOT cover the cost of your lift ticket or provide you with rental equipment.
- Ski & snowboard lessons are NOT included or provided by ODR staff.



Team Misawa Resort Run

Saturdays | Jan. 11 & 25

Departs | 6:30 a.m.

Returns | 6:30 p.m.

\$90 per person | \$50 RecOn* | \$25 ride along

**All Ages

Hit the hottest resorts in Northern Tohoku with the ODR AND Navy Liberty Program team! We'll drive you to some of our favorite resorts (including APPI, Aomori Springs, Hachimantai and Shizukuishi). Sign up early, as these seats go fast!

Includes: Transportation, Adventure Guide, ODR ski/snowboard rental & lift ticket (if paying regular or RecOn price)

- ODR ski/snowboard rentals are available on a first come, first serve basis. Premium rentals are NOT included.
- \$25 ride along reservations are available. ODR will NOT cover the cost of your lift ticket or provide you with rental equipment.
- Ski & snowboard lessons are NOT included or provided by ODR staff.

Niseko Japow Adventure

Wednesday, Jan. 15–Monday, Jan. 20

Departs | 7 p.m.

Returns | 7 a.m.

\$975 per person | \$650 RecOn*

Ages 18+

As a two-time winner of "World's Best Ski Resort," Niseko has been acknowledged as one of the finest ski resorts in Japan. The secret is definitely out. Niseko is comprised of four areas: Grand Hirafu, Niseko Village, Niseko Annupuri and Hanazono. Shed your foreigner feelings in Japan as Niseko is home to many western residents, ski & snowboard travelers, and seasonal employees in the local hotels, resorts, restaurants and bars. Rusutsu Resort is a haven for powder lovers, receiving over 14 meters of snow annually, so if you like deep, light powder snow, Rusutsu could be the perfect destination for you and your snowboard.

Includes: Transportation, Adventure Guide, four-day lift ticket, ODR ski/snowboard rental equipment & lodging



Distant Resort Run

Saturday, Jan. 18

Departs | 6:30 a.m.

Returns | 8:30 p.m.

\$95 per person | \$55 RecOn* | \$25 ride along

**All Ages

Want to change up the scenery, but don't want to drive 3+ hours on your own? Join us as we head to one of our favorite, further away resorts (Geto Kogen or Tazawako Ski Resort). Sign up early, as these seats go fast!

Includes: Transportation, Adventure Guide, ODR ski/snowboard rental & lift ticket (if paying regular or RecOn price)

- ODR ski/snowboard rentals are available on a first come, first serve basis. Premium rentals are NOT included.
- \$25 ride along reservations are available. ODR will NOT cover the cost of your lift ticket or provide you with rental equipment.
- Ski & snowboard lessons are NOT included or provided by ODR staff.

Nanataki Falls Snowshoe Hike & Onsen

Saturday, Jan. 25

Departs | 7 a.m.

Returns | 6 p.m.

\$90 per person | \$40 RecOn*

Ages 18+

Join us as we guide you through the Hachimantai Mountains by snowshoes. Twist and turn through the beautiful winter landscape until you come around the final bend in the trail and find yourself in awe of Nanataki Falls. After a rewarding snowshoe adventure, relax while soaking in one of Iwate Prefecture's most popular natural hot springs.

Includes: Transportation, Adventure/Mountain Guide, backpack, snowshoes, trekking poles & onsen entry fee (swimsuits are not allowed, tattoo friendly)

Makado Cross-Country Ski Adventure

Saturday, Jan. 25

Departs | 8 a.m.

Returns | 2 p.m.

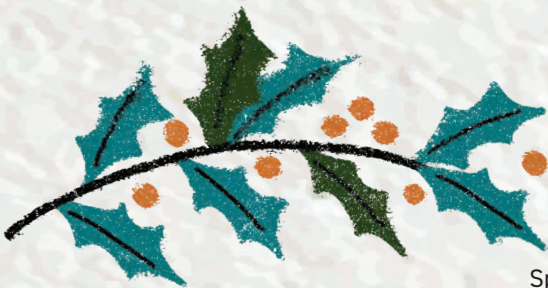
\$45 per person | \$20 RecOn*

Ages 18+

Cross-country (x-country) skiing is a great full-body workout! While it takes some skill to get the hang of it, our guide will give you tips and tricks to get you moving and enjoying this fun and fit winter sport.

Includes: Transportation, Adventure Guide, cross country skis & boots

- Limited sizes available, please check with the guide prior to departure.



Winterfest

Saturday, Dec. 7

9 a.m.–3:30 p.m.

Weasels' Den | BLDG. 973

FREE | All Ages

Shop till you drop at Misawa's biggest winter shopping event. Browse through premium equipment from big name brands, talk to local resorts, browse through Home Based Businesses and more!

Sponsored by



No federal endorsement of advertiser(s) intended.



HIMBERG POOL

BLDG. 625 | 226-7665

HOLIDAY CLOSURES

Tuesday, Dec. 24–Wednesday, Dec. 25
Sunday, Dec. 29–Friday, Jan. 3

HOURS OF OPERATION

Monday, Wednesday & Friday | 6 a.m.–7 p.m.
Tuesday & Thursday | 8 a.m.–7 p.m.
Saturday | 8 a.m.–Noon • 1–4 p.m.
PACAF Family Days | 10 a.m.–5 p.m.
CLOSED | Last Wednesday of the month,
Sundays, US & select JP federal holidays
Call 226-7665 for PT reservations.

THE LODGE

BLDG. 1482 | 226-9378

Get exclusive use of the facility for the day.
Book your next birthday party, going away,
baby shower or another event at The Lodge.
Reservations are available year-round, visit the
Outdoor Recreation Center to make one today.

\$50

Noon–10 a.m. next day

Max. occupancy 70

Lodging Amenities:

- Booths & Couches
- Restrooms
- Refrigerator
- Sink
- Microwave
- TV
- DVD Player
- Foosball Table

POOL PARTY

Friday, Dec. 20 | 5–7 p.m.
FREE | All Ages

Eat, drink, play and laugh when
Family Fun Night takes it to
the next level with our monthly
Pool Party. We provide Flyers
pizza and beverages, and
give you the chance to take
out all of our toys! All regular
Himberg Pool rules and age
requirements apply.

TOW ROPE OPERATIONS

January–March dependent on
the snowfall

Monday–Friday | Reservation only
Saturdays | 10 a.m.–3 p.m.
Sundays | No Tow Rope operations,
hillside open for Free Play

Call 226-9378 to make a
private reservation

FAMILY FUN NIGHT

*Every Friday | 5–7 p.m.
FREE | All Ages

Enjoy an evening of fun with the
whole family at the Himberg Pool.
Bring your favorite water toys,
Super Soakers™, Nerfballs® and
small inflatables to the pool for a
great time! Floats must be Coast
Guard approved.
*No Family Fun Night on PACAF
Family Days

Gosser Golf Course

BLDG. 1464 | 957-1563
Closure
Wednesday, Dec. 25–
Thursday, Jan. 2

Pro Tips

Looking to lower your golf score for the upcoming season?

Practice these concepts on our Trackman® golf simulator and be ready to dominate the course when the snow melts!

- 1. Keep your Swing Short** - Don't try to overswing or take the club back further than your body will allow and fewer things will go wrong.
- 2. Keep Pressing** - Whether you have a bad shot or a bad hole, stay level-headed. Focus on the consistency of your game to minimize the big numbers and the big errors.
- 3. Practice your Putting** - Develop a putting stroke that allows the ball to roll off the face straight and get a feel for distance control. The more consistent you can putt from 10–30 feet, the lower your rounds will become!
- 4. Trust your Swing & Process** - When you get out on the course, don't try to perform a shot you haven't practiced, stick to what you know or are practicing.

FITNESS

Potter Fitness Center | BLDG. 622 | 226-1964

Freedom Fitness Center | BLDG. 1962 | 226-9987

Iron Hand Fitness | BLDG. 1006, Bay 3
24/7 Access Card Only

Neon Spin-A-Thon

Saturday, Dec. 14

9–11 a.m.

Potter Fitness Center

Ages 16+ | FREE

Open to DOD ID cardholders

Prizes for the most miles biked.

Bring your BRIGHTEST NEON athletic attire, and let's enjoy this amazing glow-in-the-dark 80's themed experience as we ride away into the holidays! Sign up by Thursday, Dec. 12

The Running Clinic

Mondays | Dec. 2 & 9

6:15–7:15 a.m.

Wednesdays | Dec. 4 & 11

4:30–5:30 p.m.*

*In conjunction with Wellness

Walks by Health Promotion

Thursdays | Dec. 5 & 12

6:15–7:15 a.m.

BLDG. 973 | Weasels' Den, indoor track

Ages 18+ | FREE

Interested in fixing your gait for the 1.5 mile run or looking to just become better at running?

Participant
Sign-Up



Participant
Sign-Up



Anne Huntington

Potter Fitness Personal Trainer | Nutrition Coach
Military Spouse | Mom

Anne Huntington is a certified personal trainer, military spouse and proud mom who has been empowering clients to reach their fitness and wellness goals since 2015. She has a unique understanding of the challenges faced by military families and busy moms, bringing accountability, motivation and flexibility to her coaching approach. With a passion for personal growth and resilience, Anne has competed in bikini bodybuilding since 2018, winning overall titles and pushing her own limits in marathons, Spartan races, Tough Mudders, Ragnar relays and STRONG competitions. Launching soon, Anne is excited to bring her expertise to Misawa Air Base with a brand-new Fit Camp. Designed for all levels, Fit Camp offers a dynamic, supportive environment where participants can improve strength, endurance and confidence. You can reach Coach Anne at Potter Fitness to book your initial appointment!

CLOSURES/SPECIALS HOURS

Maintenance Day

Monday, Dec. 2
All operations | CLOSED

Holiday Hours

Tuesday, Dec. 24

Cashiers' Cage | 8:30 a.m.-1:30 p.m.
Venture Room | 8:30 a.m.-1:30 p.m.
Aomori Eats | 10:30 a.m.-1:30 p.m.
No Dinner Operations
Tanuki's | CLOSED

Wednesday, Dec. 25

All operations | CLOSED

Tuesday, Dec. 31

Cashiers' Cage | CLOSED
Venture Room | CLOSED
Aomori Eats | CLOSED
Tanuki's | CLOSED

15

Brunch with Santa

Sunday, Dec. 15

9 a.m.-1:30 p.m.

Club Members | \$25

Non-Members | \$30

Ages 5-11 | \$12

Ages 4 & under | FREE

*Member vouchers are not accepted.

Bring your holiday spirit—and your appetite! Join us for a festive holiday brunch where you can meet Santa Claus, snap some photos and share your Christmas wishes. Plus, enjoy raffle PRIZES for members and GIFTS at the door! Tickets go on sale Sunday, Dec. 1. Don't miss the magic!

Sponsored by



USAA®

No federal endorsement of advertiser(s) intended.



SCAN ME

WHERE GOOD VIBES AND GOOD TIMES ARE ALWAYS ON THE MENU



Misawa CLUB

BLDG. 485 | 226-9122

31

New Year's Eve Party

Tuesday, Dec. 31

10 p.m.-1 a.m.

Faultline

FREE

18+

Come ring in 2025 with us here at the club! There will be festive drink specials & live music for a rockin' good time as we count down to the New Year.



@MisawaClub

Keep in touch on social media to find out what member exclusive events we will be holding!

Dining

AOMORI EATS

Lunch | Monday-Friday
10:30 a.m.-1:30 p.m.

Dinner | Monday-Thursday
4:30-8 p.m.

Sakura Room

Dine in or order to-go. Place an order over the phone at 226-5062 or 0176-77-5062, or order to-go at the door.

SUNDAY BREAKFAST BUFFET

Every Sunday

9 a.m.-1:30 p.m.

Club Members | \$12.95

Non-Members | \$14.95

Ages 5-11 | \$6.95

Ages 5 & under | FREE

Join us for our traditional Sunday breakfast with an awesome waffle station and all-American favorites, plus delicious lunch options featuring a variety of specialty dishes each week!



TACO TUESDAY

Tuesdays | 4:30-8 p.m.

\$1.25 each

Olé it's Taco Tuesday! Choose from beef, chicken or pork, loaded on soft tortillas or crunchy taco shells, with fresh toppings just the way you like it.

WING WEDNESDAY

Wednesday | 4:30-8 p.m.

\$.75 per wing

Wing Basket | \$6 for
6 wings & fries

TANUKI'S

Tuesday-Thursday | 4:30-10 p.m.

Friday | 3:30-10 p.m.

Saturday | 4:30-10 p.m.



RECURRING EVENTS

LATIN DANCE CLASS

18+

Every Tuesday

6-8 p.m.

Faultline

FREE

Just show up with your dancing shoes and we'll lead the way!
Tuesday, Dec. 24 | NO CLASS



Become a Club Member and receive all of the wonderful benefits that come along with it! Meal vouchers, FREE room rentals, 10% off dining facilities and so much more.

Visit Memberplanet.com to sign up today!

Member Social Program



HOLIDAY MEMBERSHIP NIGHT

Tuesday, Dec. 10 | All Ages
Misawa Club
4:30-7 p.m.

Club Members ONLY | FREE

Get more out of your club membership. Member families can enjoy a FREE night of food, drinks and movie entertainment! Scan the QR to become a member today.

1

MISAWA Arts & Crafts



Adult Classes

Brushes & Beverages

Friday, Dec. 27 | 5:30-8:30 p.m.

Social time | 5:30-6 p.m.

Painting begins | 6 p.m.

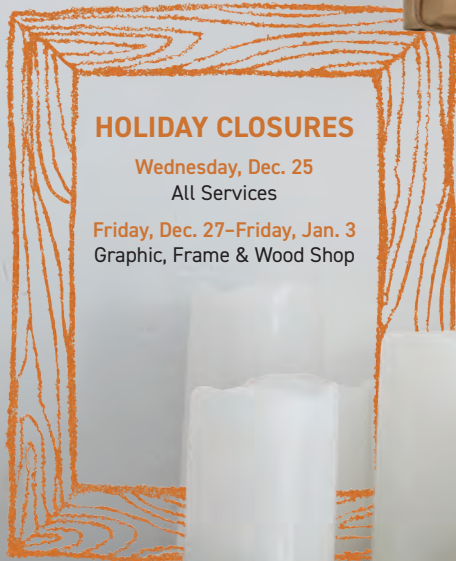
BLDG. 645

\$25 | Ages 18+

Ages 20+ may consume alcohol

Come by and learn new painting techniques or join us for a night of fun and camaraderie! Basic painting skills are required but this class is open to all levels and abilities. Don't forget to BYOB!

*Sign up by 4:30 p.m. on Friday, Dec. 27



HOLIDAY CLOSURES

Wednesday, Dec. 25
All Services

Friday, Dec. 27-Friday, Jan. 3
Graphic, Frame & Wood Shop



Additional Services

Ceramics

Create something truly unique with our large selection of ceramics! The cost of the glaze is included, so spend some time painting at our craft tables. Choose from a vast selection of colors and specialty glazes to make your piece come to life. We'll fire your ceramic when it's completed and contact you when it's ready for pick up! PACAF Family Days | \$2 off a ceramic valued \$5 or more



Crafts CENTER SKILLS & TRADES CENTER

BLDG. 645 | 226-4279

Facebook icon @MisawaArtsAndCraftsCenter

**Class sign-ups begin
Tuesday, Dec. 3**

*Please sign up at Bldg. 645 up to one hour before the scheduled class, unless otherwise stated. Advance registration is required as spots are limited. Failure to reach minimum class participation may result in a rescheduled date or cancellation.

Kid Classes

Mini Monet

Saturday, Dec. 14
Noon-1:30 p.m.
BLDG. 645
\$18 | Ages 5-9

A fully instructed class that is dedicated to teaching new skills and techniques to create a beautiful masterpiece. Parental supervision is required.

*Sign up by 11 a.m. on
Saturday, Dec. 14

Young Van Gogh

Saturday, Dec. 21
Noon-1:30 p.m.
BLDG. 645
\$20 | Ages 10+

A fully instructed class that teaches advanced skills and techniques. This class requires basic painting skills, but is open to all levels.

*Sign up by 11 a.m. on
Saturday, Dec. 21

Lamination

Stop by with your Japanese driver's license, your child's artwork or anything in-between to be laminated.

Max. paper size | 8.5" x 11"

50¢ | per sheet

Photo Printing

Bring in your memory card, USB Flashdrive, CD or iPhone for self-service photo prints. Once you're done printing, stop by our Frame Shop to order a custom frame to complement it!

4x6 | 65¢

5x7 | \$1.25

8x10 | \$2.50



Dining

LAKEVIEW GRILLE

Gosser Golf Course | BLDG. 1464
Maintenance Day | Monday, Dec. 16
Wednesday, Dec. 25 | CLOSED



Chicken Quesadilla
\$8



Grilled chicken pieces in a homemade creamy japaleño sauce served with salsa.

Shrimp Scampi
\$8



6 shrimp sautéed in a succulent, garlic butter sauce with black olives and red peppers, served atop crunchy garlic bread.



BUMPERS FUSION DINER

Walmsley Bowling Center | BLDG. 627
Maintenance Day | Tuesday, Dec. 3
Wednesday, Dec. 25 | CLOSED



French Dip Sandwich
\$10



Philly steak covered in melted swiss cheese on a delicious hoagie roll, with beef consommé. Served with fries & a 16 oz. drink.





M B E R

Specials

ESM CARD USERS

- 1 | Go to any of the listed dining locations
- 2 | Choose any ESM approved menu item
- 3 | Swipe your meal card

-  Items are ESM approved
-  Items are not ESM approved



Pancho Bowl

\$8

Philly steak, onion, green pepper & mushroom overtop a pile of rice. Served with a 16 oz. drink.



FLYERS

BLDG. 626

Maintenance Day

Monday, Dec. 9 | CLOSED

5:30 a.m.–5 p.m. the next day

Holiday Hours

Tuesday, Dec. 24 | Early CLOSURE 5:30 p.m.

Wednesday, Dec. 25 | CLOSED.



Taco Pizza

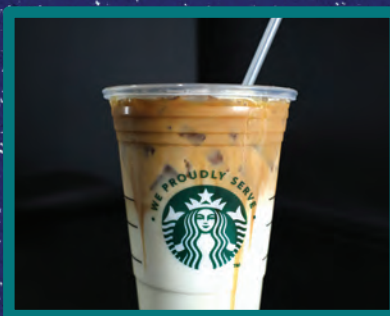
Large | \$18.50

Medium | \$15.75

Personal | \$7.50

Calzone | \$10.75

Nacho cheese, taco meat & pico de gallo



Roasted Chestnut Macchiato

\$5 | Grande Only
Hazelnut, toffee & white mocha



Gingerbread Latte

\$5 | Grande Only
Gingerbread, vanilla, hazelnut & white mocha



Green Grinch Smoothie

\$6.50

Yogurt and vanilla base, paired with mango mix, pineapples, spinach & vanilla protein, blended to perfection.

FIT PIT

Inside Potter Fitness Center | BLDG. 622

Maintenance Day

Thursday, Dec. 5 | Early CLOSURE at 5 p.m.

Holiday Hours

Tuesday, Dec. 24 | CLOSED

Wednesday, Dec. 25 | CLOSED

MONDAY, DEC. 9

Auto Complex | Schedule an oil change for a chance to receive a mug.

Gosser Golf Course | Make any purchase of Pro Shop merchandise for a chance to receive a mug.

ITT | Sign up for any ITT trip for a chance to receive a mug.

Marketing | Comment on our Facebook and Instagram 12 Days of Cheer post for a chance to win exclusive mugs (4 winners daily).

Potter Fitness | Sign up for the Neon Spin-A-Thon for your chance to receive a mug.

Touch & Go | Purchase a coffee at the NEW Touch & Go coffee shop on North Base for a chance to receive a mug.

THURSDAY, DEC. 12

Auto Complex | Schedule an oil change for a chance to receive a mug.

Flyers | Order any large pizza for a chance to receive a mug.

Gosser Golf Course | Make any purchase of Pro Shop merchandise for a chance to receive a mug.

ITT | Sign up for any ITT trip for a chance to receive a mug.

Marketing | Comment on our Facebook and Instagram 12 Days of Cheer post for a chance to win exclusive mugs (4 winners daily).

M&FRC | First five spouses to sign up using their name and "12 Days of Cheer" to attend Raising Financially Fit Kids will be presented a mug at the end of the event.

ODR | Register for an ODR Adventure, purchase a retail item or rent a piece of equipment for a chance to receive a mug.

SUNDAY, DEC. 15

Bumpers Fusion Diner | Order \$10 or more for a chance to receive a mug.

Gosser Golf Course | Make any purchase of Pro Shop merchandise for a chance to receive a mug.

Library | Borrow three books (adult fiction/non-fiction) for a chance to receive a mug.

Marketing | Comment on our Facebook and Instagram 12 Days of Cheer post for a chance to win exclusive mugs (4 winners daily).

Potter Fitness | Schedule a NEW training session with one of our certified personal trainers for a chance to receive a mug.

TUESDAY, DEC. 10

Auto Complex | Schedule an oil change for a chance to receive a mug.

Gosser Golf Course | Make any purchase of Pro Shop merchandise for a chance to receive a mug.

ITT | Sign up for any ITT trip for a chance to receive a mug.

Marketing | Comment on our Facebook and Instagram 12 Days of Cheer post for a chance to win exclusive mugs (4 winners daily).

Misawa Club | Order tacos from Aomori Eats for a chance to receive a mug.

ODR | Register for an ODR Adventure, purchase a retail item or rent a piece of equipment for a chance to receive a mug.

FRIDAY, DEC. 13

Auto Complex | Schedule an oil change for a chance to receive a mug.

Gosser Golf Course | Make any purchase of Pro Shop merchandise for a chance to receive a mug.

Marketing | Comment on our Facebook and Instagram 12 Days of Cheer post for a chance to win exclusive mugs (4 winners daily).

Library | Borrow three books (adult fiction/non-fiction) for a chance to receive a mug.

MONDAY, DEC. 16

Bumpers Fusion Diner | Order \$10 or more for a chance to receive a mug.

Gosser Golf Course | Make any purchase of Pro Shop merchandise for a chance to receive a mug.

ITT | Sign up for any ITT trip for a chance to receive a mug.

Library | Borrow three books (adult fiction/non-fiction) for a chance to receive a mug.

Marketing | Comment on our Facebook and Instagram 12 Days of Cheer post for a chance to win exclusive mugs (4 winners daily).

Pet Kennel | Schedule a grooming appointment for a chance to receive a mug.

Potter Fitness | Schedule a NEW training session with one of our certified personal trainers for a chance to receive a mug.

WEDNESDAY, DEC. 11

Auto Complex | Schedule an oil change for a chance to receive a mug.

Community Commons | First 15 people that come through the door for Brainstormer Trivia will receive a mug.

Gosser Golf Course | Make any purchase of Pro Shop merchandise for a chance to receive a mug.

Grissom DFAC | Order Wings for a chance to receive a mug.

ITT | Sign up for any ITT trip for a chance to receive a mug.

Marketing | Comment on our Facebook and Instagram 12 Days of Cheer post for a chance to win exclusive mugs (4 winners daily).

ODR | Register for an ODR Adventure, purchase a retail item or rent a piece of equipment for a chance to receive a mug.

SATURDAY, DEC. 14

Gosser Golf Course | Make any purchase of Pro Shop merchandise for a chance to receive a mug.

Library | Borrow three books (adult fiction/non-fiction) for a chance to receive a mug.

Marketing | Comment on our Facebook and Instagram 12 Days of Cheer post for a chance to win exclusive mugs (4 winners daily).

Potter Fitness | Schedule a NEW training session with one of our certified personal trainers for a chance to receive a mug.

TUESDAY, DEC. 17

Arts & Crafts | Spend \$10 or more in the retail store for a chance to receive a mug.

Bumpers Fusion Diner | Order \$10 or more for a chance to receive a mug.

Gosser Golf Course | Make any purchase of Pro Shop merchandise for a chance to receive a mug.

ITT | Sign up for any ITT trip for a chance to receive a mug.

Library | Borrow three books (adult fiction/non-fiction) for a chance to receive a mug.

Marketing | Comment on our Facebook and Instagram 12 Days of Cheer post for a chance to win exclusive mugs (4 winners daily).

M&FRC | First five spouses to sign up using their name and "12 Days of Cheer" to attend Language Exchange Night will be presented a mug at the end of the two-day event.

Pet Kennel | Schedule a grooming appointment for a chance to receive a mug.

Potter Fitness | Schedule a NEW training session with one of our certified personal trainers for a chance to receive a mug.



MONDAY, DEC. 9—FRIDAY, DEC. 20

12 Days of Cheer

Shop or dine at your favorite FSS locations for a chance to receive this mug as a thank you for your continued support and patronage.

Limited to one mug per transaction.

Follow us for a chance to WIN this exclusive mug color.



@35FSS



@MisawaFSS



WEDNESDAY, DEC. 18

- Arts & Crafts** | Spend \$10 or more in the retail store for a chance to receive a mug.
- Gosser Golf Course** | Make any purchase of Pro Shop merchandise for a chance to receive a mug.
- Grissom DFAC** | Order with a Santa hat on for a chance to receive a mug.
- ITT** | Sign up for any ITT trip for a chance to receive a mug.
- Library** | Borrow three books (adult fiction/non-fiction) for a chance to receive a mug.
- Marketing** | Comment on our Facebook and Instagram 12 Days of Cheer post for a chance to win exclusive mugs (4 winners daily).
- Pet Kennel** | Schedule a grooming appointment for a chance to receive a mug.
- Potter Fitness** | Schedule a NEW training session with one of our certified personal trainers for a chance to receive a mug.



THURSDAY, DEC. 19

- Arts & Crafts** | Spend \$10 or more in the retail store for a chance to receive a mug.
- Flyers** | Order any large pizza for a chance to receive a mug.
- Gosser Golf Course** | Make any purchase of Pro Shop merchandise for a chance to receive a mug.
- ITT** | Sign up for any ITT trip for a chance to receive a mug.
- Library** | Borrow three books (adult fiction/non-fiction) for a chance to receive a mug.
- Marketing** | Comment on our Facebook and Instagram 12 Days of Cheer post for a chance to win exclusive mugs (4 winners daily).
- Pet Kennel** | Schedule a grooming appointment for a chance to receive a mug.
- Potter Fitness** | Schedule a NEW training session with one of our certified personal trainers for a chance to receive a mug.

FRIDAY, DEC. 20

- Arts & Crafts** | Spend \$10 or more in the retail store for a chance to receive a mug.
- Gosser Golf Course** | Make any purchase of Pro Shop merchandise for a chance to receive a mug.
- ITT** | Sign up for any ITT trip for a chance to receive a mug.
- Library** | Borrow three books (adult fiction/non-fiction) for a chance to receive a mug.
- Marketing** | Comment on our Facebook and Instagram 12 Days of Cheer post for a chance to win exclusive mugs (4 winners daily).
- Pet Kennel** | Schedule a grooming appointment for a chance to receive a mug.
- Potter Fitness** | Become a member of our 500/1000 lbs. Club for a chance to receive a mug.



BOYS & GIRLS CLUB 2025 NATIONAL ARTS CONTEST

Theme | Express Yourself: Imagination Unbound

Wednesday, Jan. 1–Friday, Feb. 28 | Accepting Submissions

February 2025 | Art Show

March 2025 | Artwork Judging

We're honoring the power of imagination! Youth are invited to reflect on their unique personalities, ideas, interests and passions, allowing them to explore their creativity freely. They will be able to submit their pieces at their centers, with the encouragement and assistance of staff.

- Must be a Youth Programs member to qualify for entry

We welcome submissions in the following categories:

- Applied Arts
- Digital Arts
- Literary Arts
- Performing Arts
- Visual Arts



BOYS & GIRLS CLUBS OF AMERICA

CYPBMS Parent Portal



New users must contact the Lunney Youth Center for access.

LUNNEY Youth Center

BLDG. 112 | 226-3220 | Ages 9–12



HOLIDAY SHOPPING FIELD TRIP

Tuesday, Dec. 10
Departs | 2:15 p.m.
Returns | 5 p.m.
FREE

Youth will gather at the Lunney Youth Center for an exciting holiday shopping trip to Shimoda Mall. It's a perfect opportunity for friends to enjoy the holiday spirit, find unique gifts and create lasting memories together.

- Please bring yen for shopping
- Sign permission slip is required by Friday, Dec. 6
- Sign up through CYPBMS

NIGHTMARE BEFORE CHRISTMAS

Friday, Dec. 13
3–5 p.m.
Lunney Youth Center
FREE

Youth will make their own personal hot cocoa filled with festive cheer. As they sip their creamy drink, they'll enjoy the enchanting animation of "The Nightmare Before Christmas" and the heartwarming simplicity of "A Charlie Brown Christmas." It's the perfect way to embrace the magic of the season and create cherished memories.



YOUTH PROGRAMS

Sports & Instructionals

BLDG. 112 | 226-3220

GYMNASTICS

Tuesdays
4:30–5:30 p.m. | Beginner
5:30–6:30 p.m. | Intermediate

Wednesdays
4:30–5:30 p.m. | Intermediate
5:30–6:30 p.m. | Beginner

Thursdays
4:30–6:30 p.m. | Advanced

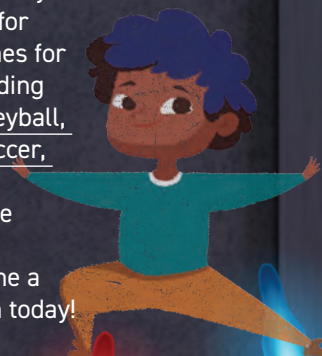
\$12.50 | Beginner Class
\$15 | Intermediate Class
\$25 | Advanced Class
\$35 | Private lessons (per hour)
North Base School Gym
Ages 8+

Get ready to tumble in gymnastics with our incredible new coach Tati! Youth gymnastics classes provide children with the opportunity to develop strength, flexibility and coordination in a fun and supportive environment. These classes cater to various age groups and skill levels, ensuring a positive experience for every young gymnast, while they learn teamwork and gain confidence.

- Private lessons are available upon request
- For any questions, contact us at **226-3220** or **35fss.fsfy.youthprograms@us.af.mil**.
- Current immunizations and sports physical are required upon registration
- Sign up through CYPBMS

VOLUNTEER COACHES NEEDED

Coaching Youth Sports is a great way to make a positive impact on Team Misawa, enhance athleticism in youth, earn volunteer hours and receive an LOA for your commitment! We are looking for volunteer coaches for all sports, including basketball, volleyball, flag football, soccer, tee-ball and softball. Visit the Lunney Youth Center to become a volunteer coach today!



3 MISAWA Teen Center

BLDG. 626 | 226-2792 | Ages 13-18



YOIKO Child Development Center

BLDG. 10 | 226-4666 | 5 & under



CHELI School Age Program

BLDG. 412 | 226-2266 | Ages 5-12



4 PAJAMA COOKIE DECORATING

Friday, Dec. 13

2-4 p.m. | Misawa Teen Center
\$5 | Members & non-members

Join us for a cozy afternoon of cookie decorating in your favorite pajamas! Teens will have the chance to unleash their creativity while decorating delicious cookies with a variety of fun toppings and icing. Grab your friends and enjoy great company as we make sweet memories together!

- Sign up through CYPBMS



WINTER WONDERLAND DANCE

Friday, Dec. 13

3 p.m. | Yoiko CDC

Come dance the day away! Dress your child in their most fanciest of clothes for a parent and child dance that the whole family will enjoy. Children love dancing, and sharing that bonding time with their parents will be the most memorable part for them all. Come warm up in Gross Motor Rooms 3 and 4!

Gross Motor Room 3	Gross Motor Room 4
3-3:30 p.m. RM 5	3-3:20 p.m. RM 14 & 15
3:30-4 p.m. RM 6	3:20-3:40 p.m. RM 18 & 21
4-4:30 p.m. RM 7	3:40-4 p.m. RM 19
	4-4:20 p.m. RM 11
	4:20-4:50 p.m. RM 12

ORNAMENT DECORATING WITH PARENTS

Friday, Dec. 13

10:30-11:30 a.m. | Decorate Ornaments
11:30 a.m.-12:30 p.m. | Holiday Lunch
Cheli SAC

Join us for a festive morning of ornament decorating! Parents will join their children to create a treasured keepsake while sharing their creativity and laughter. After crafting, everyone will enjoy a delightful holiday lunch, celebrating the joy of togetherness and enjoying quality family time.

M&FRC

Military & Family Readiness Center

Relocation

Sponsorship Training

Tuesday, Dec. 3
1-2 p.m.

Right Start

Wednesdays | Dec. 4, 11 & 18
7 a.m.-3:30 p.m.

Cultural City Tour

Fridays | Dec. 6, 13 & 20
8 a.m.-3 p.m.
Meet Behind the Library

Multicultural

Language Exchange Night

Tuesday, Dec. 17
6-7 p.m.
Mokuteki Ballroom

Deployment

Remote Tour Brief

Mondays
10 a.m., 1 p.m. & 2:30 p.m.

Pre-Deployment

Wednesdays | Dec. 4 & 18
9-11 a.m.

Reintegration

Fridays
9-11 a.m.

Transition Assistance Program

*By appointment only | Individualized Initial Counseling & Capstones

Transition Workshop (3-Day)

Monday, Dec. 2-Wednesday, Dec. 4
8:30 a.m.-4:30 p.m.

Pre-Separation Briefing

Tuesday, Dec. 10 | 1-4 p.m.

Employment (2-Day)

Thursday, Dec. 5-Friday, Dec. 6
8:30 a.m.-4:30 p.m.

Education

Thursday, Dec. 12-Friday, Dec. 13
8:30 a.m.-4:30 p.m.

Personal & Work Life Classes

**Stress

Thursday, Dec. 5
9-10 a.m.

MilLife Essentials

Thursday, Dec. 5 &
Friday, Dec. 6
8:30 a.m.-Noon

**Resilience

Tuesday, Dec. 17
2-3 p.m.

Love Languages

Thursday, Dec. 19
3-4 p.m.

Personal Finance Classes

**Holiday Spending

Tuesday, Dec. 3
9-10 a.m.

Vesting in TSP

Thursday, Dec. 5
10-11 a.m.

Divorce

Thursday, Dec. 5
1-2 p.m.

**Car Buying

Tuesday, Dec. 17
9-10 a.m.

PCS

Thursday, Dec. 5
8-9 a.m.

Continuation Pay

Thursday, Dec. 5
11 a.m.-Noon

Home Buying

Tuesday, Dec. 10
2:30-4 p.m.

Promotion

Thursday, Dec. 5
9-10 a.m.

Marriage

Thursday, Dec. 5
Noon-1 p.m.

Financially Fit Kids

Thursday, Dec. 12
3-4 p.m.



Closures

CLOSED | Every Thursday, 2-4 p.m.

CLOSED | Thursday, Dec. 19

CLOSED | Federal holidays & weekends

Volunteer

Looking for volunteer opportunities within the Misawa AB community? Contact us at 35fss.fsc@us.af.mil for a list of agencies and private organizations needing volunteers.

President's Volunteer Service Award
Application available Saturday, Feb. 1

AFN Radio Live

Every Wednesday | 3-4 p.m.



Additional Programs

For voting assistance, Air Force Aid Society, Exceptional Family Member Program (EFMP), Survivor Benefits Plan, childcare for PCS and Give Parents a Break, contact us for more information.

****Some classes take place in the Professional Development Center (PDC), BLDG. 1006**

Employment

For more information on these programs visit our webpage at 35fss.com:

- Military spouse career and education coach packages
- Department of Labor TEAMS (FREE virtual employment workshops)

Small Business Administration (SBA)

Offers a range of entrepreneurship programs, visit sba.gov/events for more information

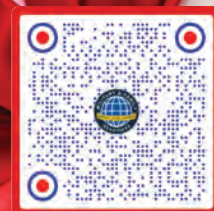
- Military Spouse Pathway to Business
- Boots to Business

All programs and events are FREE, but registration is required for each class.

Unless otherwise stated, all events take place at M&FRC. Scan the QR code to

sign up.

Class dates and times are subject to change.



SIGN UP

BLDG. 653, RM. 203 | 226-4201

Monday, Tuesday & Thursday | 8 a.m.–Noon • 1–4 p.m.

Wednesday | 9 a.m.–Noon • 1–4 p.m.

Friday | 8 a.m.–Noon

CLOSED | Thursday, Dec. 26–Friday, Jan. 3

Available via phone & email

MilTA Briefings

Thursdays

Dec. 5 & 19 | 9 a.m.

Dec. 12 | 1 p.m.

Education Center Classroom

BLDG. 653, Rm. 204

Military Tuition Assistance Briefings are required for Airmen who are using MilTA for the first time and for Airmen who have been inactive in using their TA benefits for over one year.

SkillBridge Briefing

Wednesday, Dec. 18

1 p.m.

Personal Development Center | BLDG. 1006

Learn about the SkillBridge program and how to apply. This briefing is open to all branches and is required for Airmen who plan to apply through the Misawa Education Office. We recommend Airmen attend the briefing at least one year prior to their DOS/DOR.

Study Resources for the Whole Family

DOD MWR Libraries has study resources and practice tests for military members and their families.

Teens can take guided courses to prepare for ACT, SAT and ASVAB exams, and find helpful resources in the College Readiness Center.

Military members can prepare for the AFOQT, CLEP and DSST exams, and explore resources for transitioning to college or civilian careers.

Family members can discover tools to improve their technical and personal skills, money management, and search for careers.

To access these resources:

1. Go to daf.dodmwrlibraries.org/
2. Select "Continuing Education"
3. Under "EBSCO Learning Express," click "Access"
4. Sign in using your DOD ID# (EDI-PI) and date of birth
5. Find prep materials for your needs!



Managing Your (MY) Education Workshop

Thursday, Dec. 12–Friday, Dec. 13

8:30 a.m.–Noon

MFRC Classroom | BLDG. 656

This two half-day education track is part of the Transition Assistance Program (TAP) for separating members. Members from all branches who are separating and plan to pursue their education as a Veteran are welcome.

We recommend the member attend the VA Benefits Briefing from TAP prior to this workshop.

OVERSTREET MEMORIAL

Library

BLDG. 629 | 226-4083

Holiday Hours

Wednesday, Dec. 25 | CLOSED
Thursday, Dec. 26 | 10 a.m.-6 p.m.
Friday, Dec. 27 | CLOSED
Saturday, Dec. 28 | 10 a.m.-6 p.m.
Sunday, Dec. 29-Friday, Jan. 3 | CLOSED

Christmas Story & Craft Time

Tuesday, Dec. 17 | 10:30-11:30 a.m.

STEM Program

Kid K'Nex®
Wednesday, Dec. 4
10:30-11:30 a.m.
Ages 3+

LEGO® Club
Saturday, Dec. 7
3-4:30 p.m.
All Ages

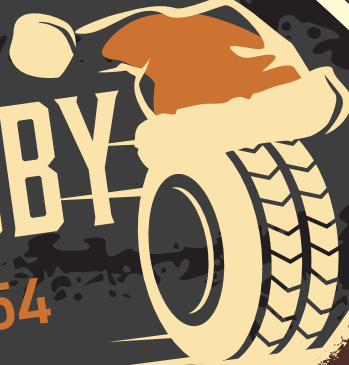
**Homeschool
STEM Day**
Wednesday, Dec. 11
11 a.m.-Noon

Ozobot®
Wednesday, Dec. 18
3:30-4:30 p.m.
All Ages



Auto HOBBY

BLDG. 767 | 226-4654



22

23

24

DRIVERS ED

WINTER REGISTRATION

Register | Tuesday, Dec. 10–Saturday, Dec. 21

Ages 18+ | 9 a.m.–6 p.m.

17 & under | 4–6 p.m.

Driving course fee | \$250*

Students under 18 years of age must have a parent present to register.

Limited slots available.

*Additional fees may apply

1

Class begins | Tuesday, Jan. 7
Class ends | Thursday, April 10
Students will receive six in-car lessons and one road test.
Sign up at the Auto Hobby Shop.

2

GETTING STARTED

Students will complete the online portion of this program on the Nebraska AAA website. Students MUST bring their Nebraska AAA How To Drive certificate and payment in order to be eligible to sign up.

Steps:

1. Scan the QR code or go to AAADriverProgram.com
2. Select Nebraska as your state, then sign up and complete the Nebraska AAA How To Drive Course. The course is \$49 and is NOT included in the \$250 Drivers Course fee.





Daycare and Grooming

Drop-Off | 8-8:30 a.m.
Pick-Up | 3-6 p.m.

Get the best dog grooming at Misawa Pet Kennel

Price depends on size.
Proof of vaccination required.
Includes: Haircut, bath, nail trim, ear cleaning, tooth brushing and gland expression. Furminator packages available.

Walk-in Nail Trimming

Fridays | 10 a.m.-1 p.m. | \$10.

Other Services

Contact us about our other services to find out more about our Boarding or Yappy Hour programs.



Monday-Friday
10 a.m.-1:30 p.m.
& 2:30-6 p.m.
Saturday
10 a.m.-2 p.m.

Closed on weekends and holidays.
Reservation required for all services. Contact us for more information **Misawa PetKennel@gmail.com**



Misawa PET KENNEL

BLDG. 756 | 226-2228

@MISAWAPETKENNEL



NAF HR Office

Torii BLDG. 656, RM. 1460
226-3108 | 35FSS.HRO@us.af.mil

Monday–Friday | 9 a.m.–3 p.m.
CLOSED | Weekends & federal holidays
CLOSED | Thursday, Dec. 19



FSS NAF Job Focus



@NAFHRMISAWA



USAJOBS.GOV

**Guest Services
Representatives**
Misawa Inn



Left to right: Joji Johnson
& Sherena Williams

Starting at \$16.35 per hour
Flex
20 years or older to apply
Military Spouse Preference
is **NOT** lost
Accepting applications



Opportunities

Inns are located at most Air Force bases
Worldwide certificates not limited to Military Bases
Professional Gold & Front Desk

What We Offer

Stress-free | Slow-paced environment
Work Life Balance | Flexible

Benefits

Gain deeper insights into Misawa through conversations with guests and help newcomers connect with our community.
"When I discover something new (about the base) I get excited."
-Sherena Williams, Guest Services Representative

How to Apply

Qualify | All skillsets and experience levels are welcome to apply.
Ready to share your talent with us? Scan the QR code or visit USAJOBS.GOV to apply and select "Guest Services Representative."

LEISURE TIMES MAGAZINE

Get the Leisure Times delivered to your P.O.
Box every month for FREE!
Scan the QR code below to sign up!



BANZAI AWARD



35TH FORCE SUPPORT SQUADRON

- B – BACKING THE WING:** Going above and beyond in backing/supporting the Wing.
- A – ADAPTABLE:** Demonstrating adaptability in tackling challenges.
- N – NOT COMPLACENT:** Avoiding complacency and contributing innovative ideas or processes.
- Z – ZEAL:** Displaying great energy and enthusiasm to accomplish the mission and/or task.
- A – ATTENTIVE:** Paying close attention to customer needs and providing the best Force Support.
- I – INFLUENCE:** Influencing positive change and personal and professional growth for others, the Squadron and/or the community.



Military | SSgt Vanessa Cotto
Custodian of Postal Effects | Postal Activities Flight



Civilian | Naoko Ichinohe
Child Development Program Assistant | Child and Youth Flight



Team | Installation Personnel Readiness
Military Personnel Flight

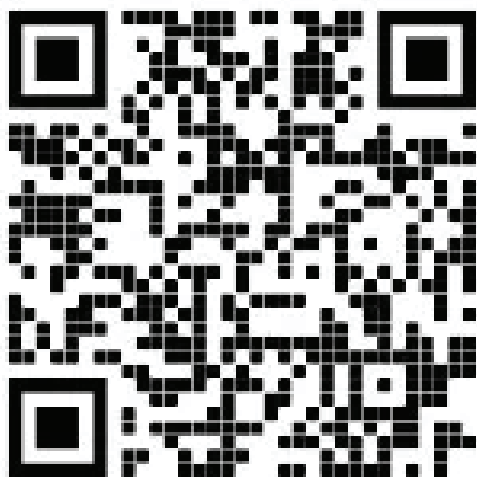
DORM WI-FI



UNLIMITED PLANS STARTING AT \$55.95/MO



Allied Telesis



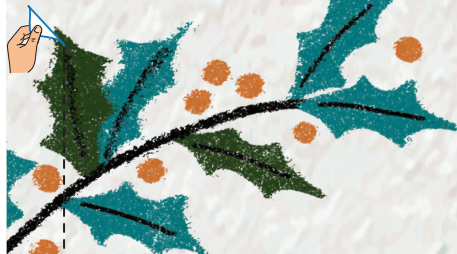
SSID: Allied Telesis WiFi

FAST & EASY SIGN-UP

- ✓ UNLIMITED DATA USAGE
- ✓ TRUE GIGABIT FIBER SERVICE FROM WIRED PORT
- ✓ NO INSTALLATION FEES
- ✓ NO CONTRACT COMMITMENTS
- ✓ NO ADDITIONAL EQUIPMENT NEEDED
- ✓ CHOOSE FROM SEVERAL PLANS

USE YOUR ACCOUNT EVERYWHERE ALLIED TELESIS WI-FI IS AVAILABLE !

For More Information, Call Us At: 03-6868-2300 or +1-415-692-8300



FSS Directory

SANTA'S HOTLINE
1-319-527-2680

NORAD SANTA TRACKER
www.NoradSanta.org



Tear here to hang on your fridge!

ADMINISTRATIVE

**35 FORCE SUPPORT SQUADRON
COMMAND SECTION
BLDG. 653**
DSN: 226-3008 | Cell: 0176-77-3008
Mon-Fri 7:30 a.m.-4:30 p.m.

**35 FSS MARKETING & PUBLICITY
BLDG. 656**
DSN: 226-9272 | Cell: 0176-77-9272
Mon, Tues, Thurs & Fri
7:30 a.m.-4:30 p.m.
Closed weekends, federal holidays
& every Wednesday for training

**35 FSS NAF HUMAN RESOURCES OFFICE
BLDG. 656**
DSN: 226-3108 | Cell: 0176-77-3108
Mon-Fri 7:30 a.m.-4:30 p.m.
Closed the third Thursday of every
month for training, weekends &
federal holidays

**CIVILIAN PERSONNEL SECTION
BLDG. 656**
DSN: 226-4621 | Cell: 0176-77-4621
Mon-Fri 7:30 a.m.-4:30 p.m.
Closed the third Thurs of every month
for training, weekends &
federal holidays

**NAF ACCOUNTING OFFICE
BLDG. 653**
DSN: 226-4360 | Cell: 0176-77-4360
Mon-Fri 7:30 a.m.-4:30 p.m.
Private Organizations: 226-2777

**MILITARY PERSONNEL SECTION
BLDG. 653**
DSN: 226-4002 | Cell: 0176-77-4002
Customer Support
Mon-Fri 9 a.m.-3 p.m.
Closed weekends & federal holidays

AREA 35
Paintball, Archery & Axe Throwing
CLOSED for the season

**ARTS & CRAFTS CENTER
SKILLS & TRADES CENTER
BLDG. 645**
DSN: 226-4279 | Cell: 0176-77-4279
Frame, Graphics, Retail & Ceramics
Tue-Sat 10 a.m.-6 p.m.
PACAF Family Days Noon-5 p.m.
Closed Sun, Mon & federal holidays
Wood Shop
Tue-Fri Noon-8 p.m.
Sat 10 a.m.-6 p.m.
PACAF Family Days Noon-5 p.m.
Closed Sun, Mon & federal holidays

**AUTO COMPLEX
Auto Hobby Center
BLDG. 767**
DSN: 226-4654 | Cell: 0176-53-5181
Emergency/towing: 080-1651-9308
Tues-Sat, 9 a.m.-6 p.m.
Closed Sun-Mon & federal holidays
**Pit Stop Garage
BLDG. 965**
DSN: 226-9486 | Cell: 0176-53-5181
Mon-Fri 7:30 a.m.-4:45 p.m.
Closed weekends & federal holidays

BASE BEACH & BOATHOUSE
Closed for the season

**CHELI SCHOOL AGE CARE
BLDG. 412**
DSN: 226-2266 | Cell: 0176-77-2266
Mon-Fri 6:30 a.m.-5:30 p.m.
Closed weekends & federal holidays
PACAF Family Days reservation only

**COMMUNITY COMMONS
BLDG. 1006, BAY 1**
DSN: 226-4128 | Cell: 0176-77-4128
Mon-Fri 7 a.m.-5 p.m.
Sat-Sun 10 a.m.-6 p.m.
PACAF Family Days 10 a.m.-5 p.m.
Closed on U.S. Federal holidays
**Banzai's Playground
Bldg. 1006, Bay 2**
Mon, Tue, Thu, Fri | 8 a.m.-4:30 p.m.
Wednesday | 11 a.m.-4:30 p.m.
Sat-Sun | 10 a.m.-1 p.m. & 2-5 p.m.
PACAF Family Days 10 a.m.-5 p.m.
Closed on U.S. Federal holidays

**EDUCATION & TRAINING SERVICES
BLDG. 653, RM. 203**
DSN: 226-4201 | Cell: 0176-77-4201
Mon, Tues & Thurs 8 a.m.-Noon, 1 p.m.-4 p.m.
Wed 9 a.m.-Noon, 1-4 p.m.
Fri 8 a.m.-Noon
Closed weekends, PACAF Family Days &
federal holidays

**FAMILY CHILD CARE
BLDG. 653, RM. 119**
DSN: 226-2273 | Cell: 0176-77-2273
Mon-Fri 7:30 a.m.-4:30 p.m.
Closed weekends, PACAF Family Days &
federal holidays

**FREEDOM FITNESS CENTER
BLDG. 1962**
DSN: 226-9987 | Cell: 0176-77-9987
Mon-Fri 8 a.m.-5 p.m.
Closed federal holidays, PACAF Family Days
and exercises
24 hour access with card

**GOSSER GOLF COURSE
BLDG. 1464**
DSN: 957-1563 | Cell: 080-1857-0087
Golf Shop
Mon-Fri 8 a.m.-4 p.m.
Sat-Sun 8 a.m.-4 p.m.
Driving Range
24 hrs a day, 7 days a week
Closed Tuesdays 6-10 a.m. for maintenance
Purchase tokens during Pro Shop hours
All hours are weather permitting

**HIMBERG POOL
BLDG. 625**
DSN: 226-7665 | Cell: 0176-77-7665
Call ODR for Fish Bowl and PT reservations
Mon, Wed, Fri 6 a.m.-7 p.m.
Tues, Thurs 8 a.m.-7 p.m.
Sat 8 a.m.-4 p.m.
Closed Sat Noon-1 p.m.
PACAF Family Days 10 a.m.-5 p.m.
Closed the last Wed of the month, Sun, US &
select JP federal holidays

**IRON HAND COMMUNITY FITNESS
BLDG. 1006, BAY 3**
DSN: 226-3982
24 hour access with card only

**LEFTWICH PARK
Near Security Hill, open daily, dawn to dusk**
DSN: 226-9378 | Cell: 0176-77-9378
Call ODR to make a reservation

**LUNNEY YOUTH CENTER
BLDG. 112**
DSN: 226-3220 | Cell: 0176-77-3220
Mon, Wed, Thurs, Fri 2:45-5:30 p.m.
Tuesday 1:45-5:30 p.m.
PACAF Family Days 1-5:30 p.m.
Closed weekends & federal holidays

**MILITARY & FAMILY READINESS CENTER
BLDG. 656**
DSN: 226-4735 | Cell: 0176-77-4735
Mon, Tue, Wed, Fri 8 a.m.-4 p.m.
Thu 8 a.m.-2 p.m.
Closed federal holidays, weekends & the
3rd Thurs each month

**MISAWA CLUB
BLDG. 485/486**
Administration Office: 226-1736
Cashiers' Cage: 226-9122
Catering Reservations: 226-9124
Administration Office Hours
Mon-Fri 8:30 a.m.-4 p.m.
Catering Office Hours
Mon-Fri 8:30 a.m.-4 p.m.
Catering requests:
misawacatering@gmail.com
Cashiers' Cage Hours
Mon-Thu 9:30 a.m.-6 p.m.
Fri 9:30 a.m.-10 p.m.
Closed on Sat
Slot Room Hours
Mon 8 a.m.-8 p.m.
Tue-Thu 8 a.m.-10:30 p.m.
Fri-Sat 8 a.m.-2 a.m. the next day
Sun 8 a.m.-5 p.m.
Closed on federal holidays

**MISAWA INN
BLDG. 670**
DSN: 222-0282 | Cell: 0176-66-0282
24 hours a day, 7 days a week

**MISAWA ITT
BLDG. 485**
DSN: 226-3555 | Cell: 0176-77-3555
Mon-Fri 9 a.m.-4 p.m.
Closed weekends & federal holidays

**MISAWA PET KENNEL
BLDG. 756**
DSN: 226-2228 | Cell: 0176-77-8255
Mon-Fri 10 a.m.-6 p.m.
Sat Closed until further notice
Closed every day from 1:30-2:30 p.m.
Closed Sun & federal holidays

**MISAWA POST OFFICE
BLDG. 519**
DSN: 226-3492 | Cell: 0176-53-5181
Closed Sun & federal holidays
Pick Up Window
Mon-Fri 9 a.m.-6 p.m.
Sat & PACAF Family days 10 a.m.-4 p.m.
Customer Service
Mon-Fri 10 a.m.-5 p.m.
Official Mail Center
Mon-Fri 10 a.m.-4 p.m.
Finance (includes shipping)
Mon-Fri 9 a.m.-5 p.m.

**MISAWA TEEN CENTER
BLDG. 626**
DSN: 226-2792 | Cell: 0176-77-2792
Mon-Fri 1:30-5:30 p.m.
Hours vary on event nights
Closed weekends, federal holidays
& PACAF Family Days

**OUTDOOR RECREATION CENTER
BLDG. 486**
DSN: 226-9378 | Cell: 0176-77-9378
Mon, Tues, Thu & Fri 9 a.m.-6 p.m.
Wed Noon-6 p.m.
Sat 8 a.m.-2 p.m.
PACAF Family Days 10 a.m.-5 p.m.
Closed Sun & federal holidays

**OVERSTREET MEMORIAL LIBRARY
BLDG. 629**
DSN: 226-4083 | Cell: 0176-77-3068
Mon-Sat 10 a.m.-6 p.m.
Closed Sundays & federal holidays

**PROFESSIONAL DEVELOPMENT &
FIRST TERM AIRMAN CENTER
BLDG. 1006**
DSN: 226-7829 | Cell: 0176-77-7829
Mon-Fri 7:30 a.m.-4:30 p.m.
(by appointment only)

**POTTER FITNESS CENTER
BLDG. 622**
DSN: 226-1964 | Cell: 0176-77-1964
Mon-Fri 5 a.m.-10 p.m.
Sat & Sun 8 a.m.-5 p.m.
Federal holidays & PACAF Family Days
24 hour access with card

**THE LODGE
BLDG. 1482**
DSN: 226-9378 | Cell: 0176-77-9378
Open for private reservations
Noon-10 a.m. next day
Call ODR to make a reservation

**WALMSLEY BOWLING CENTER
BLDG. 627**
DSN: 957-1554 | Cell: 0176-77-8255
then dial 1-281-657-1554
Sun 11 a.m.-7 p.m.
Mon-Thu 11 a.m.-9 p.m.
Fri & Sat 11 a.m.-11 p.m.
Federal holidays Noon-7 p.m.
Closed first Tuesday of the
month for maintenance

**WEASELS' DEN
BLDG. 973**
Mon-Fri 5 a.m.-8 p.m.
Sat & Sun 8 a.m.-5 p.m.
PACAF Family Days 8 a.m.-5 p.m.
Closed on federal holidays
Call ODR for Barn & Soccer Field reservations

**YOIKO CHILD DEVELOPMENT CENTER
BLDG. 10**
DSN: 226-4666 | Cell: 0176-77-4666
Mon-Fri 6:30 a.m.-5:30 p.m.
Closed weekends, federal holidays & PACAF
Family Days



BUMPERS FUSION DINER
Walmsley Bowling Center | BLDG. 627
DSN: 957-1553 | Cell: 0176-77-8255
then 1-281-657-1553
Mon-Thu 6 a.m.-8:30 p.m.
Fri 6 a.m.-10:30 p.m.
Sat 8 a.m.-10:30 p.m.
Sun 8 a.m.-6:30 p.m.

**FALCON FEEDER DINING FACILITY
BLDG. 3262**
DSN: 226-1636 | Cell: 0716-77-1636
Breakfast 6:30-8 a.m.
Lunch 10:30 a.m.-1 p.m.
Dinner 6-8 p.m.
Closed weekends & federal holidays

FIT PIT
Potter Fitness Center | BLDG. 622
DSN: 957-1561 | Cell: 0176-77-8255
then 1-281-657-1561
Mon-Fri 7 a.m.-7 p.m.
Closed first Thurs of every month at
5 p.m.

**FLIGHT KITCHEN DINING FACILITY
BLDG. 3262**
DSN: 226-3889
Cell: 080-8207-0346
24 hours a day, 7 days a week
Limited to crew members and anyone
in a flight status as crew member
or passengers from 1:30-4 a.m.
call 080-8207-0346.

**FLYERS
BLDG. 626**
24 hours a day, 7 days a week
5:30 a.m.-9 p.m. | Full Menu
9 p.m.-5:30 a.m. | Grab&Go Only
DSN: 226-8255
then 1-281-657-1555
From a Japanese Phone: 0176-77-8255
then 1-281-657-1555
Closed the second Mon of every month |
5:30 a.m.-5:30 a.m. the next day

**GRISSOM DINING FACILITY
BLDG. 624**
DSN: 226-3997
Breakfast Mon-Fri 5:30-8 a.m.*
Lunch Mon-Fri 10:30 a.m.-1:30 p.m.*
Dinner Mon-Fri 4:30-7:30 p.m.*
Midnight Meal Everyday
10 p.m.-12:30 a.m.*
Brunch Sat-Sun 6:30 a.m.-1 p.m.*
Dinner Sat-Sun 5-7 p.m.*
*Hours subject to change

LAKEVIEW GRILLE
Gosser Golf Course | BLDG. 1464
DSN: 957-1564 | Cell: 0176-77-8255
then dial 1-281-657-1564
Every day 10:30 a.m.-2 p.m.
Closed the third Mon of every month

AOMORI EATS
Misawa Club | BLDG. 485
DSN: 226-5062 | Cell: 0176-77-5062
Sunday Breakfast 9 a.m.-2 p.m.
Aomori Eats Lunch
Mon-Fri 10:30 a.m.-1:30 p.m.
Aomori Eats Dinner
Mon-Thu 4:30-8 p.m.
First Mon of every month
Lunch Buffet only 10:30 a.m.-1:30 p.m.

TANUKI'S
Misawa Club | BLDG. 485
Fri 3:30-10 p.m.
Sat 4:30-10 p.m.

TOMODACHI CAFE
Misawa Club | BLDG. 485
DSN: 226-5062
Mon-Fri 7 a.m.-1:30 p.m.
Closed First Mon of every month

WILD WEASELS' BAR & GRILL
Misawa Club | BLDG. 485
DSN: 226-5062
Cell: 0176-77-5062
Fri 4:30-9 p.m.
Sat 11 a.m.-2:30 p.m. & 4:30-9 p.m.

FOOD

DECEMBER 2024

SUNDAY	MONDAY	TUESDAY	WEDNESDAY	THURSDAY	FRIDAY	SATURDAY		
1 Club: Breakfast Buffet Post Office: Letters to Santa (continue)	2 Club: Maintenance Day Fitness: Running Clinic M&FRC: Remote Tour Brief Transition Workshop (3 day)	3 Bowling: Maintenance Day Club: Aomori Eats Taco Tuesday Latin Dance Night M&FRC: Sponsorship Training Transition Workshop (3 day) Holiday Spending Youth Sports: Gymnastics	4 Club: Aomori Eats Wing Wednesday Fitness: Running Clinic Library: Kid K'nex M&FRC: Right Start Pre-Deployment Transition Workshop (3 day) ODR: Winter Wandering Youth Sports: Gymnastics	5 Bowling: Kids Eat Free Night Club: Aomori Eats EDU: MILTA Fitness: Running Clinic M&FRC: Employment (2 day) Stress MiLife Essentials Divorce Marriage PCS Promotion Vesting in TSP Continual Pay Youth Sports: Gymnastics	6 Special Event Holidays Around the World Bowling: Laser Storm Airmen's Alleys Club: Aomori Eats Tanuki's M&FRC: Reintegration Employment (2 day) MiLife Essentials ODR: Family Fun Night	7 Special Event Winterfest Bowling: Laser Storm Airmen's Alleys Club: Tanuki's ITT: Asamushi Aquarium & Goshogawara Elm Mall Kuzumaki Winery Library: LEGO Club Post Office: Santa's Workshop		
8 Club: Breakfast Buffet	9 Club: Aomori Eats Fitness: Running Clinic M&FRC: Remote Tour Brief	10 Auto: Drivers Ed Registration (opens) Bowling: Red Pin Tuesday Club: Aomori Eats Taco Tuesday Latin Dance Night Holiday Club Member Social LYC: Holiday Shopping Field Trip M&FRC: Pre-Separation Homebuying	11 Club: Aomori Eats Wing Wednesday Com Com: Brainstormer Trivia Fitness: Running Clinic Library: Home School STEM Day M&FRC: Right Start ODR: Winter Wandering Youth Sports: Gymnastics	12 Bowling: Kids Eat Free Night Club: Aomori Eats EDU: MILTA My Education Workshop (2 day) Fitness: Running Clinic M&FRC: Education (2 day) Financially Fit Kids Youth Sports: Gymnastics	13 Bowling: Laser Storm Airmen's Alleys CDC: Winter Wonderland Dance Club: Aomori Eats Tanuki's EDU: My Education Workshop (2 day) LYC: Nightmare Before Christmas M&FRC: Reintegration Education (2 day) MTC: Pajama Cookie Decorating ODR: Family Fun Night Post Office: Letters to Santa (ends) SAC: Ornament Decorating with Parents	14 Arts & Crafts: Mini Monet Bowling: Laser Storm Airmen's Alleys Club: Tanuki's Fitness: Neon Spin-A-Thon ITT: Tohoku Free Blades Ice Hockey Game Sendai Illumination ODR: Distant Resort Run		
15 Special Event Brunch with Santa 	16 Club: Aomori Eats M&FRC: Remote Tour Brief	17 Bowling: Red Pin Tuesday Club: Aomori Eats Taco Tuesday Latin Dance Night Library: Christmas Story & Craft Time M&FRC: Language Exchange Night Resilience Car Buying Youth Sports: Gymnastics	18 Club: Aomori Eats Wing Wednesday EDU: SkillBridge Library: Ozobot M&FRC: Right Start Pre-Deployment Youth Sports: Gymnastics	19 Bowling: Kids Eat Free Night Club: Aomori Eats EDU: MILTA M&FRC: Love Languages Youth Sports: Gymnastics	20 Bowling: Laser Storm Airmen's Alleys Club: Aomori Eats Tanuki's M&FRC: Reintegration ODR: Pool Party	21 Arts & Crafts: Young Van Gogh Auto: Drivers Ed Registration (closes) Bowling: Christmas Movie & Bowl Laser Storm Airmen's Alleys Club: Tanuki's Com Com: Polar Express ITT: Sendai Illumination ODR: Distant Resort Run		
22 Club: Breakfast Buffet	23 Club: Aomori Eats M&FRC: Remote Tour Brief ODR: Holidays in Hokkaido (departs)	24 Bowling: Red Pin Tuesday Club: Aomori Eats Taco Tuesday Latin Dance Night Family Day Buffet ITT: Tsugaru Tetsudo Stove Train	25 Special Event DFAC Christmas Meal ODR: Resort Run 	26 Bowling: Kids Eat Free Night Club: Aomori Eats	27 Arts & Crafts: Brushes & Beverages Bowling: Laser Storm Airmen's Alleys Club: Aomori Eats Tanuki's Com Com: Friday Night Bingo M&FRC: Reintegration ODR: Family Fun Night	28 Bowling: Laser Storm Airmen's Alleys Club: Tanuki's ODR: Holidays in Hokkaido (returns) E1-4 & O1 Resort Run		
29 Bowling: 9 Pin No-Tap Tournament Club: Breakfast Buffet ODR: Fun Bus	30 Club: Aomori Eats M&FRC: Remote Tour Brief	31 Special Event Kids' New Year's Eve Bash New Year's Eve Party Bowling: Red Pin Tuesday Club: Aomori Eats Taco Tuesday Latin Dance Night					MISAWA CON SATURDAY, JAN. 25 10 A.M.-6 P.M.	

Tear here to hang on your fridge!



let it glow!

'Tis the Season to Gather Together



ARMY
MARINE CORPS
NAVY
AIR FORCE
SPACE FORCE
COAST GUARD
VETERANS

Our Members Are the Mission

Whether you're spending a little or lot, make the holidays lighter and brighter with a **\$300 statement credit!** Get it when you open a new credit card within 14 days of joining Navy Federal.*

Become a member today! Visit navyfederal.org/JoinAndGet.

Navy Federal is insured by NCUA. *Offer valid between 11/7/2024 and 12/31/2024 and can expire anytime without prior notice. To receive the one-time \$300 statement credit to your credit card account, you must 1) be 18 or older and eligible for membership, 2) join Navy Federal between 11/7/2024 and 12/31/2024, and 3) open a new unsecured Navy Federal Credit Card account within 14 days of joining. Offer excludes Navy Federal Business, Home Equity Line Platinum, and Rewards Secured credit cards. Navy Federal membership is open to members of the Coast Guard, all Department of Defense uniformed personnel, reservists, Active Duty, retired, Veterans, Army and Air National Guard, DoD civilian employees, contractors, and their immediate family. Limit one (1) statement credit per member. \$5 minimum balance is required to open and maintain membership savings account and to obtain statement credit. Membership Savings Account Annual Percentage Yield (APY) 0.25%, effective 7/25/2024. Fees may reduce earnings, and rates may change. Statement credit will be credited to your account within 8 weeks of credit card account opening. Accounts must be in good standing for credit to be processed. Recipient is solely responsible for any personal tax liability arising out of the acceptance of this incentive. © 2024 Navy Federal NFCU 14459 (10-24)



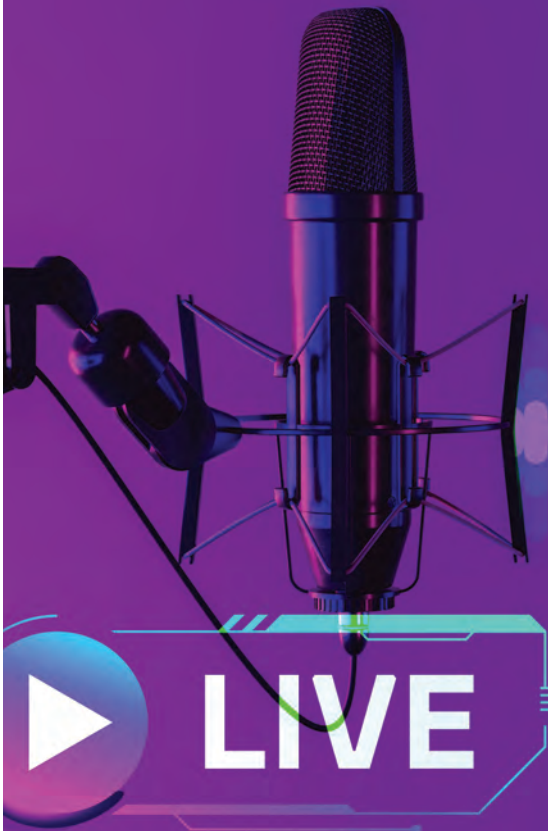
ON AIR

FSS HOUR

EVERY WEDNESDAY
7-8 a.m.

on AFN 1575 **THE EAGLE**

Tune in every Wednesday morning to find out what's happening with 35th FSS on Misawa, Air Base. **OUTDOOR RECREATION** is featured on the first Wednesday of every month. **YOUTH PROGRAMS** is featured on the second Wednesday of every month.



35TH FORCE SUPPORT SQUADRON

WINNING WEDNESDAY


35FSS
.COM

If you are not following us on social media then you are missing out!

Winning Wednesday is your weekly chance to win a **\$50 FSS GIFTCARD**. To enter, simply comment on our post on Facebook & Instagram and a random submission will be selected as the **WINNER!**



@35FSS



@MISAWAFSS

Let us handle ALL OF YOUR CAR NEEDS!

Car Rental

¥4,000-

*Yellow Plate 12hrs

Ask About Our Paint
and Body Work

- ▶ Used Car Sales
- ▶ Repair
- ▶ U.S. Forces Car Insurance
- ▶ Towing available ON BASE
- ▶ Free Title Transfer
- ▶ Road Tax
- ▶ Vehicle Junking

*Let us know if you live off base.



Used Car Center & Insurance

Commercial: 0176-53-5959

Monday-Friday | 8:30 a.m. - 5:30 p.m.

Saturday | 8:30 a.m. - 2 p.m.



Lucky Car Insurance


Bldg. 653, Room 126

Lucky's Used Car Center


6-110-5, Okamisawa, Misawa, Aomori

Paid advertisement. No federal endorsement of advertiser(s) intended.

Moving into an
Off-Base House??
Looking for stable
Internet Provider!?



WOW!
**Easy Sign-up
Online!**



HeroNet
Toll Free 0120-711-566
From US 011-81-176-53-5136
helpdesk@heronet.jp

Home Internet/Mobile Hotspot/SIM

Paid advertisement. No federal endorsement of advertiser(s) intended.

Sponsorship & Advertising Opportunities on Misawa Air Base!

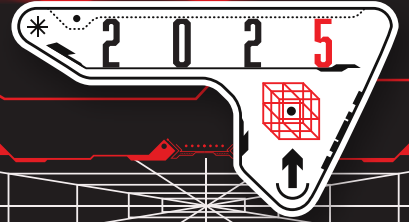
With a population of **over 11,000**, our community enjoys the many opportunities to explore Japan and the Pacific region. **Advertise your business and establish brand awareness** by advertising on Misawa Air Base!

Visit 35fss.com/ads
to learn more.





MISAWA CON



Saturday, Jan. 25

Community Commons

FREE

10 a.m.-6 p.m.
Cosplay competition |
Demos | Games

35 FSS / FSK
UNIT 5019, APO, AP 96319-5019