

MISAWA FORCE SUPPORT SQUADRON

LEADERS TIMES

三 沢 コ ン

MISAWA CON

Saturday, Jan. 25

10 a.m. – 6 p.m.

All Ages | Free Entry
Community Commons

BLDG. 1006, Bay 1

Cosplay contests | Live panels | Gaming
& vendors | Trivia | Photo booths | Art
Alley | D&D™ drop-in games

Hosted by local Dungeon Masters

Crafters will teach **FREE** classes
open to all in:

- Costume design
- 3D printing & painting
- Special effects make-up

Limited to the first 20 participants per class

バンザイベア

Classes are one hour each and will be
scheduled throughout the day.

BLDG. 1006, Bay 1 | 226-4128

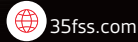
@MisawaCommunityCommons



FIND BANZAI & WIN!

Get the Leisure Times for FREE right to your mailbox! Scan QR code to sign up

Email his location to misawa.marketing@us.af.mil for a chance to win a \$50 FSS gift card. Banzai was on page 5 in the December Leisure Times.



JAN 2025

CONTENTS

COMEDY SHOW
FEATURING
PAGE 11 RUNAKO

Command

Commander, 35th Fighter Wing

Col Paul T. Davidson

Commander, 35th Mission Support Group

Col Jonathan B. Bell

Commander, 35th Force Support Squadron

Maj Jessica B. Richmond

Deputy, 35th Force Support Squadron

Mr. Stefan Kelly

Marketing & Publicity

Marketing Director/Managing Editor

Kim Tato

Communications

Specialists

Patricia Snow

Leanna Duff

Samantha Nelson

Commercial

Sponsorship

Ayub Spencer

Commercial Artist

Wakouko Sato

Illustrators

Kazunori Takahashi

Mami Takabatake

Taichi Tsuda

Special Thanks

Seiji Nishimura



Culture & Travel

12 ODR Tours

16 ITT Tours

Resources

6 Overstreet Memorial Library

7 Education & Training • MILTA • SkillBridge Briefing

8 Military & Family Readiness Center Programs • MILife Essentials

26 Auto Hobby • Driver's ED

27 Pet Kennel • Boarding Services

28 NAF HRO

29 Banzai Award

31 FSS Directory

32 FSS Event Calendar

Learn & Create

6 Homeschool STEM Day • 3D Pens

22 Brushes & Beverages • Beginner Watercolor • Needle Felting

Fitness & Sports

4 New Year Kick-Off • Fitness

5 Trackman 4 Simulator • Golf

24 Youth Basketball • Volunteer Coaches Needed

Dining

10 Aomori Eats • Sunday Breakfast Buffet • Taco Tuesday • Wing

Wednesday • Tanuki's

18 January Dining Specials

21 Kids Eat FREE Night

Youth & Family

6 Bookmark Design Contest • Story Time • STEM Programs

23 Young Van Gogh • Mini Monet • Beginner Watercolor • Needle Felting

24 National Arts Contest • Boys & Girls Basketball • Sled the Day Away • Art Afternoon • Parents' Night Out • Family Bingo



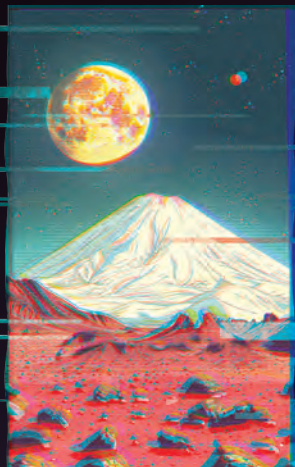
PAGE 4 New Year Kick-Off



PAGE 6 Bookmark Design Contest



PAGE 8 MilLife Essentials | A Spouse Event

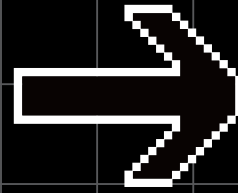


CITINECC FITNESS

Potter Fitness Center | BLDG. 622 | 226-1964

Freedom Fitness Center | BLDG. 1962 | 226-9987

Iron Hand Fitness | BLDG. 1006, Bay 3
24/7 Access Card Only



NEW YEAR
CHALLENGE

New Year Kick-Off

Saturday, Jan. 4
10 a.m. – 1 p.m.

BLDG. 620 | Potter Fitness Center Basketball Court
All ages | FREE

Need help with your health and fitness New Year's resolutions? We're here to help! Stop by our New Year Kick-Off for initial fitness planning by personal trainers, body composition scanners and equipment orientation at our Lift Clinic. Compete in fitness-related challenges throughout the event for **PRIZES!**

Trackman 4[®] Simulator

Monday–Sunday | 8 a.m.–4 p.m.
\$15 per hour

Take a swing at our simulator to keep your game sharp! Play tour, fictional and non-fictional courses, tune your swing on the driving range, compete in events or test your skills in the golf Combine. Advance registration is required at the Pro Golf Shop.



BLDG. 1464 | 957-1563
CLOSED | Wednesday, Jan. 1–Thursday, Jan. 2
Maintenance Day | Monday, Jan. 20

GOSSEYER

GOLF COURSE

OVERSTREET MEMORIAL LIBRARY

CLOSURES

NEW YEAR'S HOLIDAY | WEDNESDAY, JAN. 1-FRIDAY, JAN. 3
MARTIN LUTHER KING JR. DAY | MONDAY, JAN. 20

BLDG. 629 | 226-4083

Bookmark Design Contest 2025

Saturday, Feb. 15

Design a bookmark that reflects National Library Week

Age Groups

Group 1 | 7 & under

Group 2 | 8-12

Group 3 | 13-17

Group 4 | 18+

Prizes (FSS Gift Card)

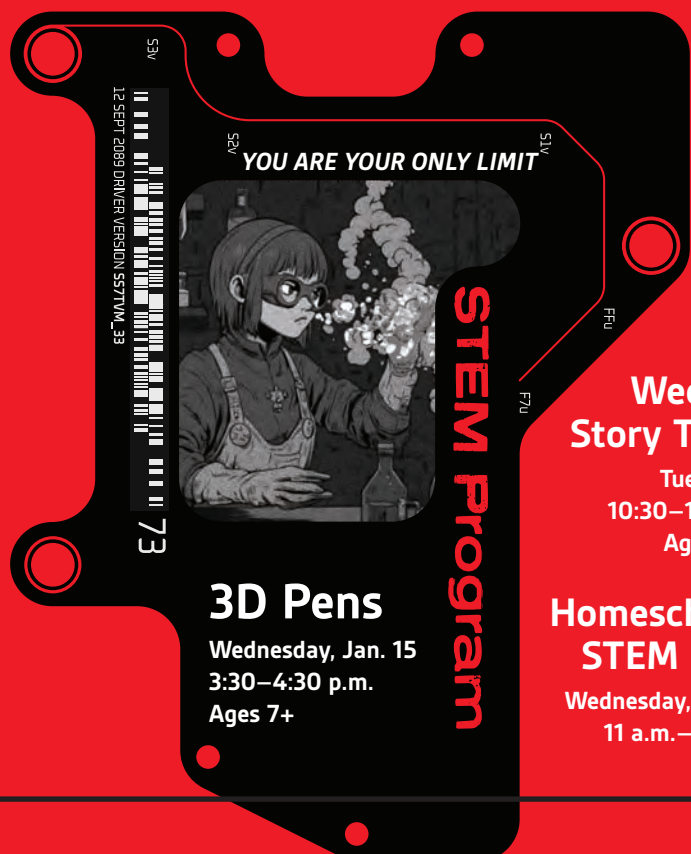
1st | \$30

2nd | \$20

3rd | \$10

Instructions

- Your entry must be your own original artwork.
- One entry per person.
- Entry forms are available at the library. 
- Entries must be turned into the library by Saturday, Feb. 15.
- Winner's names will be announced on Monday, March 17 on Facebook @MisawaBase Library. 
- The 1st, 2nd and 3rd place winners will be selected from each age group and awarded FSS gift cards.
- During National Library Week, Sunday, April 6-Saturday April 12, the winner's bookmarks will be displayed in the library. In addition, the 1st place winner's bookmark will be printed and available at the library for customers to take home.



YOU ARE YOUR ONLY LIMIT

STEM Program

3D Pens
Wednesday, Jan. 15
3:30-4:30 p.m.
Ages 7+

Weekly Story Time
Tuesdays
10:30-11 a.m.
Ages 2-5

Homeschool STEM Day
Wednesday, Jan 8
11 a.m.- Noon

EDUCATION & TRAINING OFFICE

IDENTIFICATION

BLDG. 653, RM. 203 | 226-4201

MilTA Briefings

Thursdays

Jan. 2, 16 & 30 | 9 a.m.

Jan. 9 & 23 | 1 p.m.

Education Center Classroom

BLDG. 653, RM. 204

Military Tuition Assistance Briefings are required for Airmen who are using MilTA for the first time and for Airmen who have been inactive in using their TA benefits for over one year.

Air Force personnel: Please register for the briefing via Air Force Virtual Education Center (AFVEC) Events Calendar.

SkillBridge Briefing

Wednesday, Jan. 29

1 p.m.

Personal Development Center | BLDG. 1006

Learn about the SkillBridge program and how to apply. This briefing is open to all branches and is required for Airmen who plan to apply through the Misawa Education Office. We recommend Airmen attend the briefing at least one year prior to their DOS/DOR.

Air Force personnel: Please register for the briefing via AFVEC Events Calendar.

Navy personnel: Please contact the Education & Training Office to register.

Hours of Operation

Monday, Tuesday & Thursday | 8 a.m.–Noon • 1–4 p.m.

Wednesday | 9 a.m.–Noon • 1–4 p.m.

Friday | 8 a.m.–Noon

CLOSED | Friday, Jan. 17 | PACAF Day

MILITARY WIVES

BLDG. 656 | 226-4735

Facebook: @MisawaJapanM&FRC
Instagram: @MisawaJapanMFRC



MiLife Essentials A Spouse Event



Day One

Thursday, Feb. 6 | 8:30 a.m.–Noon

Optional cooking class | Noon–1 p.m.

Spouses will learn about military life, customs, tradition, rank and protocol. They will also gain awareness of resources, benefits and services available to spouses on base.

Day Two

Friday, Feb. 7 | 8:30 a.m.–Noon

Explore various units around Misawa Air Base on our field trip.



Relocation

Sponsorship Training

Tuesday, Jan. 7
1–2 p.m.

Right Start

Wednesdays
7 a.m.–3:30 p.m.

Cultural City Tour

Fridays
8 a.m.–3 p.m.
Meet behind the library

Deployment

Pre-Deployment

Wednesdays | Jan. 1, 15 & 29
9–11 a.m.

Reintegration

Fridays
9–11 a.m.

Remote Tour Brief

Fridays
10 a.m., 1 p.m. & 2:30 p.m.

Transition Assistance Program

*By appointment only | Individualized Initial Counseling & Capstones

Transition Workshop (3-Day)

Monday, Jan. 6–Wednesday, Jan. 8
8:30 a.m.–4:30 p.m.

Entrepreneurship (2-Day)

Thursday, Jan. 16–Friday, Jan. 17
8:30 a.m.–4:30 p.m.

Pre-Separation Briefing*

Friday, Jan. 24 | 1–4 p.m.
Tuesday, Jan. 28 | 8:30–11 a.m.

Employment (2-Day)

Thursday, Jan. 9–Friday, Jan. 10
8:30 a.m.–4:30 p.m.

Career & Credential Exploration (C2E)

Thursday, Jan. 23–Friday, Jan. 24
8:30 a.m.–4:30 p.m.



家族

Military & Family Readiness Center

ミリタリーアンドファミリーリーディネスセンター

Personal & Work Life Classes

Cooking 101

Wednesday, Jan. 8
11:30 a.m.–12:30 p.m.

Spouse Monthly Meet Up: Health Promotions

Thursday, Jan. 9
11:30 a.m.–1:30 p.m.

Grief & Loss

Thursday, Jan. 9
2–3 p.m.

Bundles for Babies

Thursday, Jan. 16
9 a.m.–12:30 p.m.

Understanding the Love Languages**

Thursday, Jan. 23
9–10 a.m.

Building Relationships

Tuesday, Jan. 28
9–10 a.m.

Personal Finance Classes

PCS

Thursday, Jan. 9
8–9 a.m.

Promotion

Thursday, Jan. 9
9–10 a.m.

TSP

Thursday, Jan. 9
10–11 a.m.

Continuation Pay

Thursday, Jan. 9
11–11:20 a.m.

Marriage

Thursday, Jan. 9
Noon–1 p.m.

Divorce

Thursday, Jan. 9
1–2 p.m.

Debt Destroyer**

Tuesday, Jan. 14
8–9:30 a.m.

Homebuying

Thursday, Jan. 16
2:30–4 p.m.

Financial Planning**

Tuesday, Jan. 28
8–9:30 a.m.

Credit Management

Thursday, Jan. 30
2:30–4 p.m.

授業



Closures

CLOSED | Every Thursday, 2–4 p.m.

CLOSED | Thursday, Jan. 16

CLOSED | Federal holidays & weekends

Volunteer

Looking for volunteer opportunities within the Misawa AB community? Contact us at 35fss.fsc@us.af.mil for a list of agencies and private organizations needing volunteers.

The President's Volunteer Service Award (PVSA) self-nomination application begins Wednesday, Jan. 15–Saturday, Feb. 15 on Tockify

AFN Radio Live

Every Wednesday | 3–4 p.m.

Additional Programs

For voting assistance, Air Force Aid Society, Exceptional Family Member Program (EFMP), Survivor Benefits Plan, childcare for PCS and Give Parents a Break, contact us for more information.

****Some classes take place in the Professional Development Center (PDC), BLDG. 1006**

Employment

For more information on these programs, visit our webpage at 35fss.com.

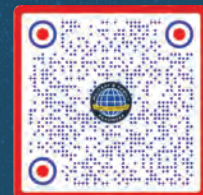
- Military spouse career and education coach packages
- Department of Labor TEAMS (FREE virtual employment workshops)

Small Business Administration (SBA)

Offers a range of entrepreneurship programs, visit sba.gov/events for more information.

- Military Spouse Pathway to Business
- Boots to Business

All programs and events are FREE, but registration is required for each class. Unless otherwise stated, all events take place at M&FRC. Scan the QR code to sign up. **Class dates and times are subject to change.**



SIGN UP



Become a Club Member and receive all of the wonderful benefits that come along with it! Meal vouchers, FREE room rentals, 10% off facilities and so much more. Visit Memberplanet.com to sign up today!

FIRST FRIDAY NIGHT CLUB MEMBER SOCIAL

18+

Friday, Jan. 3

Faultline

Club Members ONLY | FREE

4:30–7 p.m.

Club Members are invited to come and unwind after a fulfilling week at work. Enjoy a grazing buffet, drink specials and an exciting raffle prize.

TUESDAY NIGHT FAMILY MEMBER SOCIAL

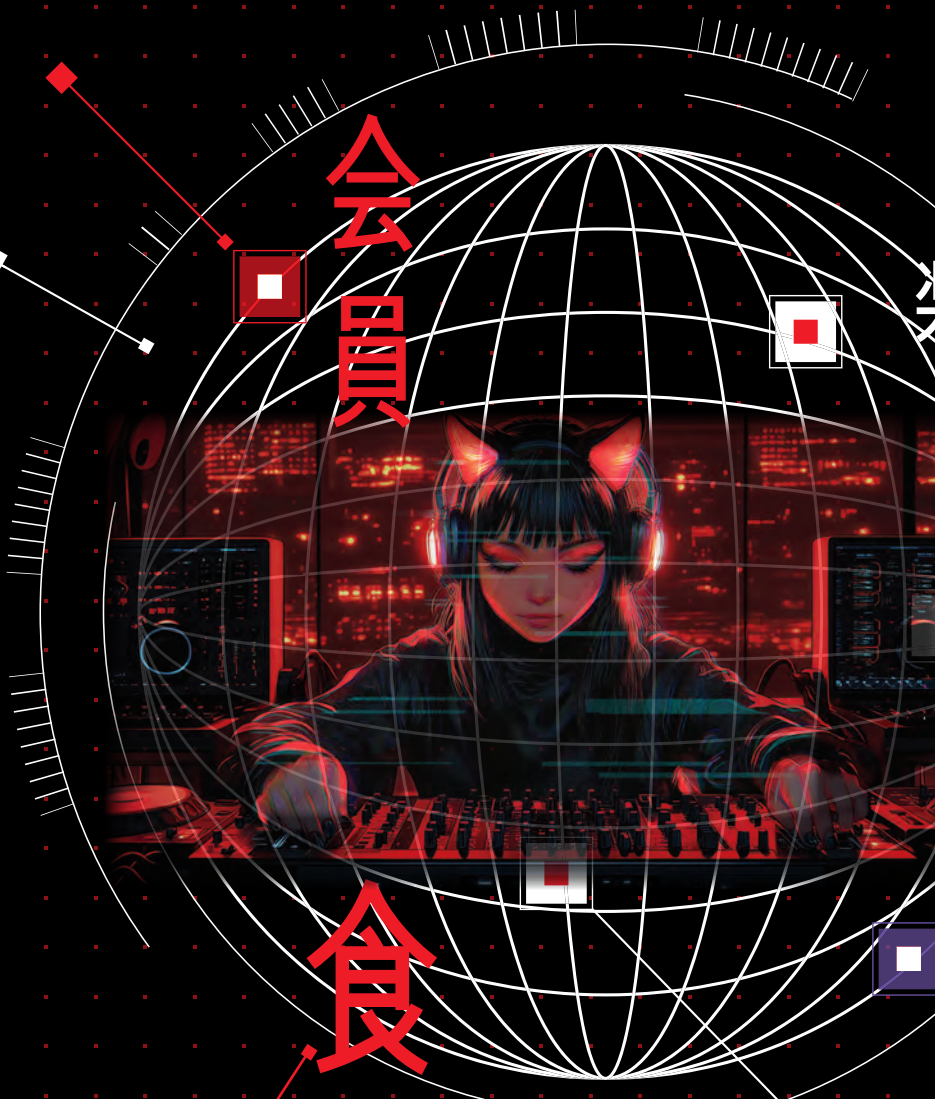
Tuesday, Jan. 14 | All Ages

Misawa Club

Club Members ONLY | FREE

4:30–7 p.m.

Get more out of your club membership. Member families can enjoy a FREE night of food, drinks and movie entertainment! Scan the QR above to become a member today.



DINING

Aomori Eats

Lunch | Monday–Friday

10:30 a.m.–1:30 p.m.

Dinner | Monday–Wednesday

4:30–8 p.m.

Sakura Room

Dine in or order to-go. Place an order over the phone at 226-5062 or 0176-77-5062, or order to-go at the door.

Sunday Breakfast Buffet

Every Sunday

9 a.m.–1:30 p.m.

Club Members | \$15

Non-Members | \$18

Ages 5–11 | \$9

Ages 5 & under | FREE

Join us for our traditional Sunday breakfast with an awesome waffle station and all-American favorites, plus delicious lunch options featuring a variety of specialty dishes each week!

Tanuki's

Tuesday–Thursday | 4:30–10 p.m.

Friday | 3:30–10 p.m.

Saturday | 4:30–10 p.m.

Wild Weasels' Bar & Grill

Thursday–Saturday | 4:30–9 p.m.

Taco Tuesday

Tuesdays | 4:30–8 p.m.

\$1.25 each

Olé it's Taco Tuesday! Choose from beef, chicken or pork, loaded on soft tortillas or crunchy taco shells, with fresh toppings just the way you like it.

Wing Wednesday

Wednesday | 4:30–8 p.m.

\$.75 per wing

Wing Basket | \$6 for 6 wings & fries



@MISAWACLUB

KEEP IN TOUCH ON SOCIAL MEDIA TO FIND OUT WHAT MEMBER EXCLUSIVE EVENTS WE WILL BE HOLDING!

MISAWA

CLUB

RECURRING EVENTS

LATIN DANCE CLASS 18+

Every Tuesday
6–8 p.m.
Faultline
FREE

Just show up with your dancing shoes and we'll lead the way!

TRIVIA NIGHT 18+

Wednesday, Jan. 22
Doors open | 5 p.m.
Game starts | 6:30 p.m.
Faultline
Members | \$5
Non-Members | \$10

COMEDY SHOW

featuring **RUNAKO**



Friday, Jan. 10 18+
Doors open | 5 p.m.
Show starts | 6 p.m.
Misawa Club
FREE

コメディ

SPECIAL EVENTS

CLOSURES / SPECIAL HOURS

New Year's Day | Wednesday, Jan. 1
All operations | CLOSED

Maintenance Day | Monday, Jan. 6
All operations | CLOSED

Family Day | Friday, Jan. 17
Lunch operations | CLOSED

Martin Luther King Jr. Day | Monday, Jan. 20
All operations | CLOSED

BLDG. 485 | 226-9122

MISAWA CLUB

Distant Resort Run

Saturday, Feb. 1 & 15

Departs | 6:30 a.m.

Returns | 8:30 p.m.

\$95 per person | \$55 RecOn* | \$25 ride along

**All Ages

Want to change up the scenery, but don't want to drive 3+ hours on your own? Join us as we head to one of our favorite, further away resorts (Geto Kogen or Tazawako Ski Resort). Sign up early, as these seats go fast!

Includes: Transportation, Adventure Guide, ODR ski/snowboard rental & lift ticket (if paying regular or RecOn price)

- ODR ski/snowboard rentals are available on a first come, first serve basis. Premium rentals are NOT included.
- \$25 ride along reservations are available. ODR will NOT cover the cost of your lift ticket or provide you with rental equipment.
- Ski & snowboard lessons are NOT included or provided by ODR staff.

Hokkaido Winter Festival

Saturday, Feb. 1–Wednesday, Feb. 5

Departs | 7 p.m.

Returns | 9 a.m.

\$900 per person | \$450 RecOn*

Ages 18+

Two snow festivals in one trip? That's right. Just over the hills from the world-famous Sapporo lies another lesser-known gem on the shores of scenic frozen Lake Shikotsu. The chance to soak in wild springs and snowmobile will make this trip well worth it.

Includes: Transportation, Adventure Guide, lodging & admission fees

- There is a mandatory pre-trip briefing at ODR.

Night Skiing/Snowboarding

Thursdays | Feb. 6, 13 & 20

Departs | 4 p.m.

Returns | 10 p.m.

\$70 per person | \$30 RecOn*

**Ages 16+

Not getting enough days on the slopes? We can help. Night skiing/snowboarding is the perfect way to break up that long week and get you about a half day's worth of turns.

Includes: Transportation, Adventure Guide & lift ticket

- Rental gear is NOT included, but can be rented separately at ODR.

Resort Run

Saturdays | Feb. 8 & 22

Departs | 6:30 a.m.

Returns | 6:30 p.m.

\$90 per person | \$50 RecOn*

**All Ages

Hit the hottest resorts in Northern Tohoku as we drive you to some of our favorite resorts (including APPI, Aomori Springs, Hachimantai and Shizukuishi). Sign up early, as these seats go fast!

Includes: Transportation, Adventure Guide, ODR ski/snowboard rental & lift ticket (if paying regular or RecOn price)

- ODR ski/snowboard rentals are available on a first come, first serve basis. Premium rentals are NOT included.
- \$25 ride along reservations are available. ODR will NOT cover the cost of your lift ticket or provide you with rental equipment.
- Ski & snowboard lessons are NOT included or provided by ODR staff.

Fun Bus

Sundays | Feb. 9 & 23

Departs | 8 a.m.

Returns | 6:30 p.m.

\$85 per person | \$45 RecOn* | \$25 ride along

**All Ages

Grab your friends and/or family as we visit various resorts in Northern Tohoku. These trips will rotate between the larger resorts of APPI, Hachimantai and Okunakayama Kogen. Sign up early, as these seats go fast!

Includes: Transportation, Adventure Guide, ODR ski/snowboard rental & lift ticket (if paying regular or RecOn price)

- ODR ski/snowboard rentals are available on a first come, first serve basis. Premium rentals are NOT included.
- \$25 ride along reservations are available. ODR will NOT cover the cost of your lift ticket or provide you with rental equipment.
- Ski & snowboard lessons are NOT included or provided by ODR staff.



OUTDO

RECREATION

BLDG. 486

 @MisawaAB.ODR



**FEBRUARY
ADVENTURES
GO ON SALE
THURSDAY, JAN. 2**



**DOOR
ON CENTER**

Furano JaPow Adventure

Wednesday, Feb. 12–Monday, Feb. 17

Departs | 7 p.m.

Returns | 7 a.m.

\$975 per person | \$650 RecOn*

Ages 18+

Join us on a foray to some of the lesser-known resorts in Hokkaido. Furano's inland location offers lighter snow with magnificent views of the Tokachi and Daisetsuzan mountain ranges. Kiroro, on the coast, features a variety of terrain among its over twenty courses.

Includes: Transportation, Adventure Guide, four-day lift ticket, ODR ski/snowboard rental equipment & lodging

Makado Cross-Country Ski Adventure

Saturday, Feb. 15

Departs | 8 a.m.

Returns | 2 p.m.

\$45 per person | \$20 RecOn*

Ages 18+

Cross-country skiing is a great full-body workout! While it takes some skill to get the hang of it, our guide will give you tips and tricks to get you moving and enjoying this fun and fit winter sport.

Includes: Transportation, Adventure Guide, cross-country skis & boots

- Limited sizes available, please check with the guide prior to departure.

Hakkoda Snowmonster Snowshoe

Saturday, Feb. 22

Departs | 7 a.m.

Returns | 5 p.m.

\$75 per person | \$45 RecOn*

Ages 18+

Walk among the frozen trees high in the Hakkoda Mountains that some say resemble monsters! You'll ride the cable car up, but this is still a challenging hike down since we'll cover between 2–5 km depending on weather, group fitness & experience level, and snow condition. Make sure to ask your guide about the famous movie filmed on location along with other mountaineering history facts!

Includes: Transportation, Adventure/Mountain Guide, ropeway ticket, snowshoe set & backpack

- Personal winter gear is required (jackets, snow pants, gloves, hat & goggles).

*RecOn discount prices are for active duty military and their family members assigned to Misawa Air Base. Verification in the form of a military/family member ID must be provided at the time of enrollment.

**Those under 18 years of age must have a parent or guardian participating.

226-9378

 @Misawa ODR



HIMBERG POOL

BLDG. 625 | 226-7665

FAMILY FUN NIGHT

***Every Friday | 5–7 p.m.**
FREE | All Ages

Enjoy an evening of fun with the whole family at the Himberg Pool. Bring your favorite water toys, Super Soakers™, Nerfballs® and small inflatables to the pool for a great time! Floats must be Coast Guard approved.

No Family Fun Night on PACAF Family Days



Holiday Closures

CLOSED | Wednesday, Jan. 1–Friday, Jan. 3

Hours of Operation

Monday, Wednesday & Friday | 6 a.m.–7 p.m.

Tuesday & Thursday | 8 a.m.–7 p.m.

Saturday | 8 a.m.–Noon | 1–4 p.m.

PACAF Family Days | 10 a.m.–5 p.m.

CLOSED | Last Wednesday of the month, Sundays, US & select JP federal holidays

Call 226-7665 or visit Himberg Pool for PT reservations.

POOL PARTY

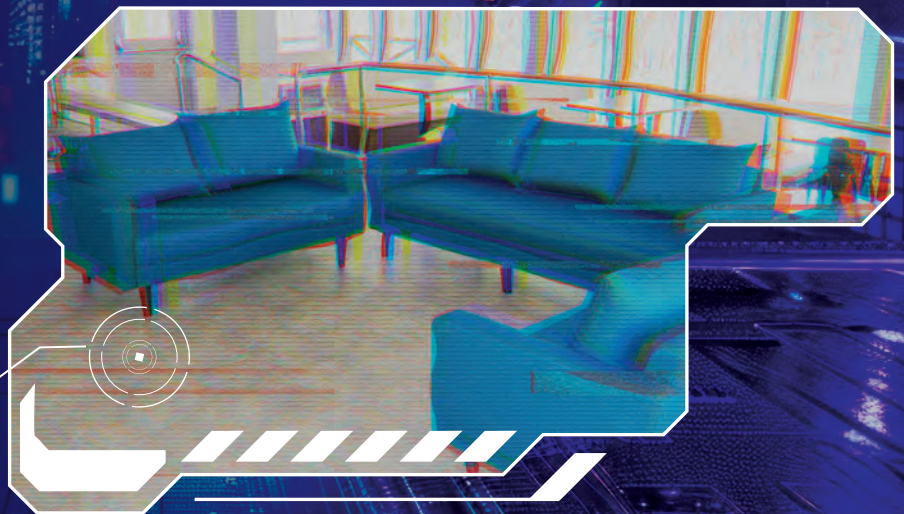
Friday, Jan. 31
5–7 p.m.
FREE | All Ages

Eat, drink, play and laugh when Family Fun Night takes it to the next level with our monthly Pool Party. We provide Flyers pizza and beverages, and give you the chance to take out all of our toys! All regular Himberg Pool rules and age requirements apply.

THE LODGE

BLDG. 1482 | 226-9378

Get exclusive use of the facility for the day. Book your next birthday party, going away, baby shower or another event at The Lodge. Reservations are available year-round, visit the Outdoor Recreation Center to make one today.



\$50

Noon–10 a.m. next day

Max. occupancy 70

Lodging Amenities:

- Booths & Couches
- Restrooms
- Refrigerator
- Sink
- Microwave
- TV
- DVD Player
- Foosball Table

TOW ROPE OPERATIONS

January–March dependent on the snowfall

Monday–Friday | Reservation only

Saturdays | 10 a.m.–3 p.m.

Sundays | No Tow Rope operations, hillside open for Free Play
Ages 8+

Ages 18+ | \$5 per day

Ages 8–17 | \$3 per day

Make your cash only payments the day of at The Lodge.

Call 226-9378 to make a private reservation.

COMMUNITY COMMONS

BLDG. 1006, Bay 1 | 226-4128

Friday Night Bingo

Jan. 3, 10 & 31

Starts | 7:30 p.m.

Pre-sale | \$15

Day of Event | \$20

Community Commons presents Friday Night Bingo!

Taiko Drumming Class

Wednesdays

Starting Jan. 8

Ages 10+ | \$15

Mokuteki Ballroom

5–6 p.m. | Beginners & kids*

6–7 p.m. | Intermediate

7–8 p.m. | Advanced

Sign up by 4 p.m. on Mondays

*Ages 10+

コミュニティ

Brainstormer Trivia

Wednesday, Jan. 8

Starts | 6 p.m.

All ages | FREE

Ages 20+ to consume alcohol

You will compete in six rounds of trivia for cash prizes including: POP, Pictures, Matching, General Knowledge, Know-it-all and Themes. You may bring your own snacks and beverages.

Misawa Con

Saturday, Jan. 25

All ages | FREE

Join us for this year's Misawa Con! Gaming, cosplay, anime, HBBs and so much more!

For more information see page 2.



Hirosaki Lantern Festival

Saturday, Feb. 8

On sale Wednesday, Jan. 8

Departs | 12:30 p.m.

Returns | 10:30 p.m.

Ages 13+ | \$40

Ages 4–12 | \$30

Ages 3 & under | \$20

The magic begins as the sun goes down. Enter the enchanting winter grounds of Hirosaki Castle, where mini igloos and grottos are carved and illuminated with candles and lanterns.



あはれ

MISV
ITT
FEBRUARY

Charter Bus

All organizations interested in chartering a bus for a tour should stop by ITT to make reservations. Reservations are accepted up to 90 days in advance of the trip date and are taken on a first come, first served basis.

Saturday, Feb. 15

On sale Wednesday, Jan. 15

Saturday, Feb. 22

On sale Wednesday, Jan. 22

Departs | 9:30 a.m.

Returns | 7:30 p.m.

Ages 12+ | \$55

Ages 6–11 | \$40

Ages 5 & under | \$25

Take the ropeway to the top of Mt. Hakkoda and enjoy breathtaking winter views. Once at the top you can enjoy a walk amongst the infamous snow monsters that are unique to the Hakkoda Mountains.



Hakkoda Snow Monster

あはれ

あはれ

Tsugaru Tetsudo Stove Train



Saturday, Feb. 15

On sale Wednesday, Jan. 15

Departs | 8 a.m.

Returns | 7:30 p.m.

Ages 12+ | \$60

Ages 5–11 | \$50


Ages 1–4 | \$30

Ages 11 months & under | \$15*

*Does not include craft fee for ages 4 & under

Enjoy a ride on the classic Tsugaru Stove Train that has been in service since 1940. The train has a nostalgic atmosphere with a coal potbelly stove inside, wooden window frames and wooden floors. You will take in breathtaking winter scenery on your way to Kanayama City where you will make your own ceramic mug or plate.

BLDG. 485 | 226-3555

 @MisawaITT

Happy Birthday

from Misawa ITT! Save up to \$10 on any local tour scheduled during your birth month, limit one per individual.

Hours of Operation

Monday–Friday | 9 a.m.–4 p.m.

CLOSED | Saturdays, Sundays & federal holidays

For more information call 226-3555.

Tohoku Free Blades Ice Hockey Game

Saturday, Feb. 22

On sale Wednesday, Jan. 22

Departs | 3:15 p.m.

Returns | 9 p.m.

Ages 16+ | \$25

Ages 3–15 | \$20

Ages 2 & under | \$10

Watch the Tohoku Free Blades take the ice as they compete for the Asia League Ice Hockey Japan Cup. **Includes:** Round trip transportation and reserved seat.



SPECIALS

LAKEVIEW

DINING

Lakeview Grille

Gosser Golf Course | BLDG. 1464
CLOSED | Wednesday, Jan. 1—Thursday,
Maintenance Day | Monday, Jan. 20

Macho Nacho E
\$8.95

A mountain of tortilla chips topped with chili, steak pieces, nacho cheese, tomatoes, jalapeño peppers, green onions, sour cream & salsa.



Steak Salad E
\$10.95

Tender strips of steak served on a bed of mixed greens with red onions, tomatoes, green peppers & almonds. Choose one of our delicious dressings to accompany your salad.



Steak Plate E
\$12.50

A 6 oz. ribeye steak that is grilled to perfection, drizzled with a Korean steak sauce & served with rice & a side salad.

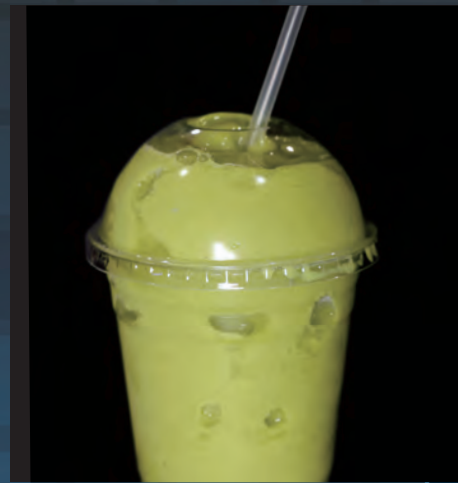


Fit Pit

Inside Potter Fitness Center | BLDG. 622
Maintenance Day
Thursday, Jan. 2 | Early CLOSURE at 5 p.m.

Winter Green Smoothie E
\$6.50

Mango, almond milk, banana, pineapple, spinach & cinnamon.



B
C
black
shred

食事

Monday, Jan. 2



E **Cheesy Garlic Chicken Wrap**
\$8

Chicken thigh sprinkled with garlic, mozzarella & cheddar cheese all wrapped up in a tortilla. Served with fries & a 16 oz. drink.



E **Mac'n Cheeseburger Wrap**
\$10

Bacon, burger, macaroni & cheddar cheese wrapped in a tortilla for the ultimate wrap. It's the perfect combination of all of your favorite foods. Served with fries & a 16 oz. drink.



Bumpers Fusion Diner

Walmsley Bowling Center | BLDG. 627
Maintenance Day
Tuesday, Jan. 7 | CLOSED

ESM CARD USERS

- 1 | Go to any of the listed dining locations
- 2 | Choose any ESM approved menu item
- 3 | Swipe your meal card

E Items are ESM approved

~~**E**~~ Items are not ESM approved



BBQ Beef Burrito **E**
\$8.50

Cilantro lime rice, corn & black bean medley, sour cream, shredded cheese & our signature barbecue sauce.



Cinnamon Roll Latte ~~**E**~~

\$5 | Grande Only
Creamy vanilla & cinnamon latte.



Toasted Snowball ~~**E**~~
\$5 | Grande Only

White mocha, marshmallow & green mint latte.



BLDG.626
Maintenance Day
Monday, Jan. 13 | CLOSED
5:30 a.m.–5:30 p.m. the next day

BLDG.627 | 957-1554

WALMSLEY BOWLING CENTER



Special Events

Men's Night
Saturday, Jan. 18
6–9 p.m.
\$15 per person



It's Men's Night at Walmsley Bowling Center! Grab your pals and bowl for your chance to win some of our amazing prizes. Prizes are for men only, though ladies are more than welcome to bowl. There is a minimum of ten participants needed for the prize giveaway. Registration is required, scan the QR below to sign up.



Movie & Bowl
Saturday, Jan. 25
7–11 p.m.

Featuring PG-13 movies that YOU get to choose. This month's choices are Jumangi, Jumangi Welcome to the Jungle, Pirates of the Caribbean or your own suggestion! Cast your votes NOW until Saturday, Jan. 25.

Scan the QR to cast your vote





Closures & Holiday Hours

Wednesday, Jan. 1 | New Year's Day | CLOSED

Tuesday, Jan. 7 | Maintenance Day | CLOSED

Monday, Jan. 20 | Martin Luther King Jr. Day | Noon–7 p.m.



Recurring Events

Red Pin Tuesday

Tuesdays

11 a.m.–9 p.m.

\$1 games & \$1 shoe rentals

If you get a strike with a red headpin, you win a FREE game! For verification, you must notify the desk that you have a red headpin prior to rolling the frame.

Laser Storm Bowling

Fridays & Saturdays

7–11 p.m.

We turn the lights down and the music up! Grab your friends and “glow” bowling while requesting your favorite songs! This is open to all patrons, however explicit and adult-themed music and videos may be played.

Kids Eat FREE Night

Thursdays

5–8:30 p.m.

Ages 12 & under

Take the night off from cooking dinner and bring the family to Bumpers Fusion Diner! Get a FREE kids meal for each purchased adult combo meal.

Airmen's Alley

Fridays & Saturdays

7–11 p.m.

Ages 18+ | E6 & below only

E1-4 | \$15

E5-6 | \$25

Enjoy unlimited games and shoe rentals all night long! You must show your ID to bowl.

Skills & Trades Center

BLDG. 645 | 226-4279

[f @MisawaArtsAndCraftsCenter](#)

CLOSURES

All Services

Wednesday, Jan. 1

Graphics, Frame & Wood Shop

Wednesday, Jan. 1–Friday, Jan. 3

Misawa ARTS & CRAFTS Center

芸術と工芸

Adult Classes

Brushes & Beverages

Friday, Jan. 31 | 5:30–8:30 p.m.

Social time | 5:30–6 p.m.

Painting begins | 6 p.m.

BLDG. 645

\$25 | Ages 18+

Ages 20+ may consume alcohol

Come by and learn new painting techniques or join us for a night of fun and camaraderie! Basic painting skills are required, but this class is open to all levels and abilities. Don't forget to BYOB!

[*Sign up by 4:30 p.m. on Friday, Jan. 31](#)



Class sign-ups begin Thursday, Jan. 2

*Advance registration is required for all classes, as spots are limited. Failure to reach minimum class participation may result in a rescheduled date or cancellation. Please sign up at Arts & Crafts, Bldg. 645.

Kid Classes

Mini Monet

Saturday, Jan. 11
Noon–1:30 p.m.
BLDG. 645
\$18 | Ages 5–9

A fully instructed class that is dedicated to teaching new skills and techniques to create a beautiful masterpiece. Parental supervision is required.

[*Sign up by 11 a.m. on Saturday, Jan. 11](#)



Young Van Gogh

Saturday, Jan. 25
Noon–1:30 p.m.
BLDG. 645
\$20 | Ages 10+

A fully instructed class that teaches advanced skills and techniques. This class requires basic painting skills, but is open to all levels.

[*Sign up by 11 a.m. on Saturday, Jan. 25](#)



Crafting 101

Beginner Watercolor

Friday, Jan. 10
10:30 a.m.–12:30 p.m.
BLDG. 645
\$30 | All Ages

A fully instructed class that is dedicated to teaching the art of water coloring and its techniques to create a beautiful masterpiece. This painting will be a great addition for any home. All supplies are included, just show up and have fun creating!

[*Sign-up by 6 p.m. on Wednesday, Jan. 8](#)



Needle Felting

Friday, Jan. 24
Noon–3 p.m.
BLDG. 645
\$30 | Ages 10+

Enhance your crafting skills and learn how to use felting needles and natural fibers to make basic shapes that will create a felted project for you to take home. All supplies are included, just show up and have fun creating!

[*Sign up by 6 p.m. on Wednesday, Jan. 22](#)





BOYS & GIRLS CLUBS OF AMERICA

BOYS & GIRLS CLUB 2025 National Arts Contest

Theme | Express Yourself: Imagination Unbound

Now—Friday, Jan. 31 | Accepting Submissions
Saturday, Feb. 8 | 11 a.m.—5:30 p.m. | Art Show & Local Judging
March 2025 | National Level Artwork Judging

We're honoring the power of imagination! Youth are invited to reflect on their unique personalities, ideas, interests and passions, allowing them to explore their creativity freely. They will be able to submit their pieces at their centers, with the encouragement and assistance of staff.

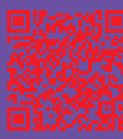
- Must be a Youth Programs member to qualify for entry

We welcome submissions in the following categories:

- Applied Arts
- Digital Arts
- Literary Arts
- Performing Arts
- Visual Arts



CYPBMS Parent Portal



New users must contact the Lunney Youth Center for access.



YOUTH PROGRAMS
Sports & Instructionals

BLDG. 112 | 226-3220



Boys & Girls Basketball

Tuesday, Feb. 4—Thursday, March 27
\$45 | Registration Now Open
Ages 5—14

Basketball is a fun team sport that provides children the opportunity to develop strength, coordination and teamwork through learning basic skills like dribbling, passing, shooting and more. Working together is key, so players share the ball, play defense and support each other on the court. This season is all about having fun, learning new skills and being a great teammate!

- For any questions, contact us at 226-3220 or 35fss.fsfy.youthprograms@us.af.mil.
- Current immunizations and sports physical are required upon registration
- Sign up through CYPBMS

Volunteer Coaches Needed

Coaching Youth Sports is a great way to make a positive impact on Team Misawa, enhance athleticism in youth, earn volunteer hours and receive an LOA for your commitment! We are looking for volunteer coaches for all sports, including basketball, volleyball, flag football, soccer, tee-ball and softball. Visit the Lunney Youth Center to become a volunteer coach today!

MISAWA
TEEN CENTER
BLDG. 626 | 226-2792 | Ages 13-18

Sled the Day Away

Friday, Jan. 17

2-5:30 p.m.

Misawa Teen Center

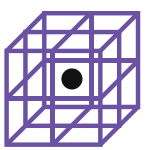
\$5 | Members & non-members

Celebrate your no school day with the Misawa Teen Center as we turn it into the ultimate snow day! Get ready for sledding, building snowmen and the best snowball fights around! After working up a chill, we'll warm up inside the Teen Center with a cozy cup of hot chocolate.

- Sign up through CYPBMS



YOIKO CHILD DEVELOPMENT CENTER
BLDG. 10 | 226-4666 | 5 & under



Art Afternoon

Friday, Jan. 31

3 p.m.

Yoiko CDC

FREE | All ages

Join us for a fun and creative afternoon at the CDC, where parents and children can explore their artistic side together! We'll have themed art stations set up in the Gross Motor Room, perfect for all ages to get messy and make something special. Bring your imagination and creativity—we can't wait to see what you create!

Parents' Night Out

Friday, Jan. 24

6-10 p.m.

Sign up by | Wednesday, Jan. 22

Yoiko CDC & Cheli SAC

\$8 per hour

Take a night off and some time to yourselves while your kids have a blast at the Yoiko CDC or Cheli SAC!

- Sign up through CYPBMS or in person at Yoiko CDC or Cheli SAC
- Failure to reach minimum participation may result in a cancellation



CHELI
SCHOOL AGE PROGRAM
• BLDG. 412 | 226-2266 | Ages 5-12

Family Bingo

Sign up | Monday, Jan. 6-Monday, Jan. 20

Friday, Jan. 24

3:30-4:30 p.m.

Cheli SAC

FREE | Members only

Grab your family and join us for a fun-filled day of Bingo that everyone will enjoy! Celebrate the new year by spending quality time with your kids, laughing and winning exciting prizes. Let's kick off the year with joy, fun and plenty of chances to win!

- Sign up at Cheli SAC front desk

AUTO HOBBY AUTO HOBBY

BLDG. 767 | 226-4654

DRIVER'S ED

AAA ONLINE



Driver's Ed will now be offered by the season:

- Spring | January–April
- Summer | May–August
- Fall | September–December

These classes include 6 hours of in-car lessons spread into 12–15 weeks followed by the last two weeks being reserved for the Road Test. Participants that pass the road test will receive their licenses in the last week. The Auto Hobby Complex staff will schedule your first lesson. Openings are first come first served with limited slots available at a time.

Fees

Basic Driving Course | \$250
Including six in-car lessons and one road test.

Road Test Retake | \$50
With instructor approval

**Late Fee/Expired Permit
Fee | \$10**

Additional In-Car Lessons | \$25 per hour

All fees are to be paid at the Auto
Hobby Complex.

STEP 1: Complete Nebraska AAA Online.
(Takes 45 hours)

STEP 2: Sign up for the program at the Auto Hobby Center.

STEP 3: Complete the 4EJ Class.

STEP 4: Take the payment receipt and 4EJ Class certificate to
Pass and ID to get your student permit.

STEP 5: Complete the 6 in-car lessons, 10 hours of practice
and the Road Test within 6 months.

DET KENNEL PET KENNEL

動物

BLDG. 756 | 226-2228

 @MISAWA PET KENNEL

[24] [45]

BOARDING SERVICES

PER NIGHT

Cat Boarding | \$20
Dog Boarding | \$25
Daycare | \$17 per day

Please inform our staff if your pet needs to be quarantined. An additional pet in the same kennel is 50% off the regular boarding rate.



[33] [35]

營業時間

■ BLOCK 1 [33]
■ BLOCK 2 [33]

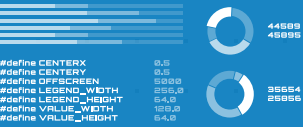
m_respect (0,0),
m_respect (0,0)



m_fitch (0,0),
m_fitch (0,0),
m_fitch (0,0),
m_fitch (0,0),
m_fitch (0,0)

RB = 0.97 *
RB = 1.00 *
RB = 1.01 *

■ SECTOR 50 [45]
make_floc4(-1,0), +1,0, +1,0, +1,0,
make_floc4(-1,0), +1,0, +1,0, +1,0,



ADDITIONAL BOARDING SERVICES

Early Drop-Off | Late Pick-Up | \$20
Outside Business Hours Drop-Off/Pick-Up | \$35
Playtime with Caretaker (15 min.) | \$6
Walk (30 min.) | \$15
Walk (15 min.) | \$6
Food | \$5 per day

GROOMING PACKAGES

Includes hair cut, bath, nail trim, ear cleaning, tooth brushing and gland expression.

SMALL | \$55
MEDIUM | \$60-65
LARGE | \$75-90
EXTRA LARGE | \$100



Scan the QR code for specific breed prices

Monday-Friday | 10 a.m.-1:30 p.m.
& 2:30-6 p.m.
Saturday | 10 a.m.-2 p.m.
Sundays & federal holidays | CLOSED

Reservation required for all services.
Contact us for more information
MisawaPetKennel@gmail.com



An additional fee of up to \$20 may be charged for any extra labor required to handle pets with behavioral issues (Muzzle \$10, Extra Labor \$20).

NAF HR OFFICE

Torii BLDG. 656, RM. 1460
226-3108 | 35FSS.HRO@us.af.mil

職安

Monday–Friday | 9 a.m.–3 p.m.
CLOSED | Weekends & federal holidays

FSS NAF Jobs

Explore new interests with NAF jobs! NAF jobs are a great way to learn something new to add to your resumé or to perfect skills you already have! Want to know how they make the coffee so good at Flyers? Apply to be a Barista! Want to know more about outdoor equipment or outdoor activities in Japan? Apply to be a Recreation Assistant!



@NAFHRMISAWA



USAJOBS.GOV

How to Apply

1. Visit USAJOBS.gov to view all active 35th FSS NAF job announcements. Using the search function, type "Air Force Services" in the keywords bar, then "Misawa AB, Japan" for the location.
2. Create an account at USAJOBS.gov. Upload all required documents. While a resumé is required for consideration, candidates must also upload supporting documents necessary to verify any claimed preferences. The candidate's name must be on the documents and the documents must be legible. If you do not upload supporting documents for claimed preferences, you will be listed as a "no preference" applicant. You must upload supporting documents for each vacancy announcement you apply for.
3. Remain accessible after submission. Please regularly check the email address in which your USAJOBS account was created. Selected applicants receive a tentative offer via email with a link that expires within 48 hours. We are looking forward to you joining the 35th FSS Team!

Subscribe to the
LEISURE TIMES
 MAGAZINE

Get the Leisure Times delivered to your P.O. Box every month for FREE! Scan the QR code below to sign up!



BANZAI AWARD



35TH FORCE SUPPORT SQUADRON

- B – BACKING THE WING:** Going above and beyond in backing/supporting the Wing.
- A – ADAPTABLE:** Demonstrating adaptability in tackling challenges.
- N – NOT COMPLACENT:** Avoiding complacency and contributing innovative ideas or processes.
- Z – ZEAL:** Displaying great energy and enthusiasm to accomplish the mission and/or task.
- A – ATTENTIVE:** Paying close attention to customer needs and providing the best Force Support.
- I – INFLUENCE:** Influencing positive change and personal and professional growth for others, the Squadron and/or the community.



Military | SrA Alex Romero
 Postal Service Center, Shift Lead | Postal Activities Flight



Civilian | Grace Sutton
 Education and Training Technician | Force Development Flight



Team | Education & Training Office
 Force Development Flight

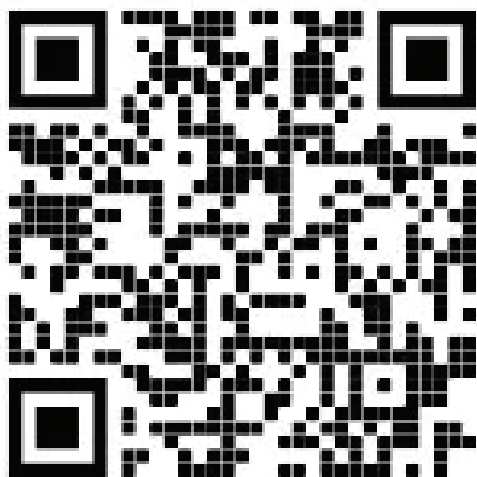
DORM WI-FI



UNLIMITED PLANS STARTING AT \$55.95/MO



Allied Telesis



SSID: Allied Telesis WiFi

FAST & EASY SIGN-UP

- ✓ UNLIMITED DATA USAGE
- ✓ TRUE GIGABIT FIBER SERVICE FROM WIRED PORT
- ✓ NO INSTALLATION FEES
- ✓ NO CONTRACT COMMITMENTS
- ✓ NO ADDITIONAL EQUIPMENT NEEDED
- ✓ CHOOSE FROM SEVERAL PLANS

USE YOUR ACCOUNT EVERYWHERE ALLIED TELESIS WI-FI IS AVAILABLE !

For More Information, Call Us At: 03-6868-2300 or +1-415-692-8300

FSS Directory

Tear here to hang on your fridge!

Administrative

35 FORCE SUPPORT SQUADRON COMMAND SECTION BLDG. 653

DSN: 226-3008 | Cell: 0176-77-3008
Mon-Fri 7:30 a.m.-4:30 p.m.

35 FSS MARKETING & PUBLICITY BLDG. 656

DSN: 226-9272 | Cell: 0176-77-9272
Mon, Tues, Thurs & Fri
8 a.m.-4 p.m.
Closed weekends, federal holidays
& every Wednesday for training

35 FSS NAF HUMAN RESOURCES OFFICE BLDG. 656

DSN: 226-3108 | Cell: 0176-77-3108
Mon-Fri 7:30 a.m.-4:30 p.m.
Closed the third Thursday of every
month for training, weekends &
federal holidays

CIVILIAN PERSONNEL SECTION BLDG. 656

DSN: 226-4621 | Cell: 0176-77-4621
Mon-Fri 7:30 a.m.-4:30 p.m.
Closed the third Thurs of every month
for training, weekends &
federal holidays

NAF ACCOUNTING OFFICE BLDG. 653

DSN: 226-4360 | Cell: 0176-77-4360
Mon-Fri 7:30 a.m.-4:30 p.m.
Private Organizations: 226-2777

MILITARY PERSONNEL SECTION BLDG. 653

DSN: 226-4002 | Cell: 0176-77-4002
Customer Support
Mon-Fri 9 a.m.-3 p.m.
Closed weekends & federal holidays

AREA 35

Paintball, Archery & Axe Throwing
Closed for the season

ARTS & CRAFTS CENTER

SKILLS & TRADES CENTER | BLDG. 645

DSN: 226-4279 | Cell: 0176-77-4279

Retail & Ceramics

Tue-Sat 10 a.m.-6 p.m.

PACAF Family Days Noon-5 p.m.

Closed Sun, Mon & federal holidays

Frames & Graphics

Tue-Sat 10 a.m.-2:30 p.m. & 3:30-6 p.m.

PACAF Family Days Noon-2:30 p.m. & 3:30-5 p.m.

Closed Sun, Mon, US & select JP

federal holidays

Wood Shop

Tue-Fri Noon-2:30 p.m. & 3:30-8 p.m.

Sat 10 a.m.-Noon & 1-6 p.m.

PACAF Family Days Noon-2:30 p.m. & 3:30-5 p.m.

Closed Sun, Mon US & select JP

federal holidays

AUTO COMPLEX

Auto Hobby Center

BLDG. 767

DSN: 226-4654 | Cell: 0176-53-5181

Emergency/towing: 080-1651-9308

Tues-Sat, 9 a.m.-6 p.m.

Closed Sun-Mon & federal holidays

Pit Stop Garage

BLDG. 965

DSN: 226-9486 | Cell: 0176-53-5181

Mon-Fri 7:30 a.m.-4:45 p.m.

Closed weekends & federal holidays

BASE BEACH & BOATHOUSE

Closed for the season

CHELI SCHOOL AGE CARE

BLDG. 412

DSN: 226-2266 | Cell: 0176-77-2266

Mon-Fri 6:30 a.m.-5:30 p.m.

Closed weekends & federal holidays

PACAF Family Days reservation only

COMMUNITY COMMONS

BLDG. 1006, BAY 1

DSN: 226-4128 | Cell: 0176-77-4128

Mon-Fri 7 a.m.-5 p.m.

Sat-Sun 10 a.m.-6 p.m.

PACAF Family Days 10 a.m.-5 p.m.

Closed on U.S. Federal holidays

Banza's Playground

Bldg. 1006, Bay 2

Mon, Tue, Thu, Fri | 7 a.m.-4:30 p.m.

Wed 11 a.m.-4:30 p.m.

Sat, Sun & PACAF Family Days 10 a.m.-5 p.m.

Closed on U.S. Federal holidays

EDUCATION & TRAINING SERVICES

BLDG. 653, RM. 203

DSN: 226-4201 | Cell: 0176-77-4201

Mon, Tues & Thurs 8 a.m.-Noon, 1 p.m.-4 p.m.

Wed 9 a.m.-Noon, 1-4 p.m.

Fri 8 a.m.-Noon

Closed weekends, PACAF Family Days &

federal holidays

FAMILY CHILD CARE

BLDG. 653, RM. 119

DSN: 226-2273 | Cell: 0176-77-2273

Mon-Fri 7:30 a.m.-4:30 p.m.

Closed weekends, PACAF Family Days &

federal holidays

FREEDOM FITNESS CENTER

BLDG. 1962

DSN: 226-9987 | Cell: 0176-77-9987

Mon-Fri 8 a.m.-5 p.m.

Closed federal holidays, PACAF Family Days

and exercises

24 hour access with card

GOSSER GOLF COURSE

BLDG. 1464

DSN: 957-1563 | Cell: 080-1857-0087

Golf Shop

Mon-Fri 8 a.m.-4 p.m.

Sat-Sun 8 a.m.-4 p.m.

Driving Range

24 hrs a day, 7 days a week

Closed Tuesdays 6-10 a.m. for maintenance

Purchase tokens during Pro Shop hours

All hours are weather permitting

HIMBERG POOL

BLDG. 625

DSN: 226-7665 | Cell: 0176-77-7665

Call ODR for Fish Bowl and PT reservations

Mon, Wed, Fri 6 a.m.-7 p.m.

Tues, Thurs 8 a.m.-7 p.m.

Sat 8 a.m.-4 p.m.

Closed Sat Noon-1 p.m.

PACAF Family Days 10 a.m.-5 p.m.

Closed the last Wed of the month, Sun, US &

select JP federal holidays

IRON HAND COMMUNITY FITNESS

BLDG. 1006, BAY 3

DSN: 226-3982

24 hour access with card only

LEFTWICH PARK

Near Security Hill, open daily, dawn to dusk

DSN: 226-9378 | Cell: 0176-77-9378

Call ODR to make a reservation

LUNNEY YOUTH CENTER

BLDG. 112

DSN: 226-3220 | Cell: 0176-77-3220

Mon, Wed, Thurs, Fri 2:45-5:30 p.m.

Tuesday 1:45-5:30 p.m.

Closed weekends, PACAF Family Days &

federal holidays

MILITARY & FAMILY READINESS CENTER

BLDG. 656

DSN: 226-4735 | Cell: 0176-77-4735

Mon, Tue, Wed, Fri 8 a.m.-4 p.m.

Thu 8 a.m.-2 p.m.

Closed federal holidays, weekends & the

3rd Thurs each month

MISAWA CLUB

BLDG. 485/486

Administration Office: 226-1736

Cashiers' Cage: 226-9122

Catering Reservations: 226-9124

Administration Office Hours

Mon-Fri 8:30 a.m.-4 p.m.

Catering Office Hours

Mon-Fri 8:30 a.m.-4 p.m.

Catering requests:

misawacatering@gmail.com

Cashiers' Cage Hours

Mon-Thu 9:30 a.m.-6 p.m.

Fri 9:30 a.m.-10 p.m.

Closed on Sat

Slot Room Hours

Mon 8 a.m.-8 p.m.

Tue-Thu 8 a.m.-10:30 p.m.

Fri-Sat 8 a.m.-2 a.m. the next day

Sun 8 a.m.-5 p.m.

Closed on federal holidays

MISAWA INN

BLDG. 670

DSN: 222-0282 | Cell: 0176-66-0282

24 hours a day, 7 days a week

MISAWA ITT

BLDG. 485

DSN: 226-3555 | Cell: 0176-77-3555

Mon-Fri 9 a.m.-4 p.m.

Closed weekends & federal holidays

MISAWA PET KENNEL

BLDG. 756

DSN: 226-2228 | Cell: 0176-77-8255

Mon-Fri 10 a.m.-6 p.m.

Sat Closed until further notice

Closed every day from 1:30-2:30 p.m.

Closed Sun & federal holidays

MISAWA POST OFFICE

BLDG. 519

DSN: 226-3492 | Cell: 0176-53-5181

Closed Sun & federal holidays

Pick Up Window

Mon-Fri 9 a.m.-6 p.m.

Sat & PACAF Family days 10 a.m.-4 p.m.

Customer Service

Mon-Fri 10 a.m.-5 p.m.

Official Mail Center

Mon-Fri 10 a.m.-4 p.m.

Finance (includes shipping)

Mon-Fri 9 a.m.-5 p.m.

MISAWA TEEN CENTER

BLDG. 626

DSN: 226-2792 | Cell: 0176-77-2792

Mon-Fri 1:30-5:30 p.m.

Hours vary on event nights

Closed weekends, federal holidays

& PACAF Family Days

OUTDOOR RECREATION CENTER

BLDG. 486

DSN: 226-9378 | Cell: 0176-77-9378

Mon, Tues, Thu & Fri 9 a.m.-6 p.m.

Wed Noon-6 p.m.

Sat 8 a.m.-2 p.m.

PACAF Family Days 10 a.m.-5 p.m.

Closed Sun & federal holidays

OVERSTREET MEMORIAL LIBRARY

BLDG. 629

DSN: 226-4083 | Cell: 0176-77-3068

Mon-Sat 10 a.m.-6 p.m.

Closed Sundays & federal holidays

PROFESSIONAL DEVELOPMENT & FIRST TERM AIRMAN CENTER

BLDG. 1006

DSN: 226-7829 | Cell: 0176-77-7829

Mon-Fri 7:30 a.m.-4:30 p.m.

(by appointment only)

POTTER FITNESS CENTER

BLDG. 622

DSN: 226-1964 | Cell: 0176-77-1964

Mon-Fri 5 a.m.-10 p.m.

Sat & Sun 8 a.m.-5 p.m.

Federal holidays & PACAF Family Days

24 hour access with card

THE LODGE

BLDG. 1482

DSN: 226-9378 | Cell: 0176-77-9378

Open for private reservations

Noon-10 a.m. next day

Call ODR to make a reservation

Tow Rope Operations

Jan.-March dependent on snowfall

Mon-Fri Reservation only

Sat 10 a.m.-3 p.m.

Sun No Tow Rope operations, hillside open

for Free Play

WALMSLEY BOWLING CENTER

BLDG. 627

DSN: 957-1554 | Cell: 0176-77-8255

then dial 1-281-657-1554

Sun 11 a.m.-7 p.m.

Mon-Thu 11 a.m.-9 p.m.

Fri & Sat 11 a.m.-11 p.m.

Federal holidays Noon-7 p.m.

Closed first Tuesday of the

month for maintenance

WEASELS' DEN

BLDG. 973

Mon-Fri 5 a.m.-8 p.m.

Sat & Sun 8 a.m.-5 p.m.

PACAF Family Days 8 a.m.-5 p.m.

Closed on federal holidays

Call ODR for Barn & Soccer Field reservations

YOIKO CHILD DEVELOPMENT CENTER

JANUARY

令和 7 年

2025

SUNDAY

SAVE THE DATE

THE BIG GAME

MONDAY, FEB. 10
DOORS OPEN | 7 A.M.
GAME STARTS | 8:30 A.M.

MONDAY

6

Club: Aomori Eats
M&FRC: Transition Workshop (3 day)
SAC: Family Bingo (sign up opens)

13

Club: Aomori Eats
Library: Bookmark Design Contest (begins)

20

Club: Aomori Eats
ITT: Tokyo Sumo (returns)
Hiroshima 4 Days (returns)
ODR: Niseko JaPow Adventure (returns)
SAC: Family Bingo (sign up closes)

27

Club: Aomori Eats
Bowling: 9 Pin No-Tap Tournament
Club: Breakfast Buffet
ODR: Fun Bus

TUESDAY



7

Auto: Drivers Ed (begins)
Bowling: Maintenance Day
Club: Aomori Eats | Taco Tuesday | Latin Dance Night | Tanuki's
Library: Story Time
M&FRC: Sponsorship Training | Transition Workshop (3 day)

14

Bowling: Red Pin Tuesday
Club: Aomori Eats | Taco Tuesday | Latin Dance Night | Tanuki's | Family Member Social
Library: Story Time
M&FRC: Debt Destroyer

21

Bowling: Red Pin Tuesday
Club: Aomori Eats | Taco Tuesday | Latin Dance Night | Tanuki's
Library: Story Time
M&FRC: Pre-Separation

28

Bowling: Red Pin Tuesday
Club: Aomori Eats | Taco Tuesday | Latin Dance Night | Tanuki's
Library: Story Time
M&FRC: Pre-Separation | Building Relationships | Financial Planning | Pre-Separation Briefing

WEDNESDAY

1
NEW YEAR'S DAY
Youth: National Arts Contest (accepting submissions) | Boys & Girls Basketball (registration opens)

8

Club: Aomori Eats | Wing Wednesday
Tanuki's: Trivia Night
Com Com: Brainsorter Trivia | Taiko Drumming Class
Library: Homeschool STEM Day
M&FRC: Right Start | Transition Workshop (3 day) | Cooking 101

15

Club: Aomori Eats | Wing Wednesday
Tanuki's:
Com Com: Taiko Drumming Class
Library: 3D Pens
M&FRC: Right Start | Pre-Deployment
ODR: Niseko JaPow Adventure (departs)

22

Club: Aomori Eats | Wing Wednesday
Tanuki's:
Com Com: Taiko Drumming Class
M&FRC: Right Start

29

Club: Aomori Eats | Wing Wednesday
Tanuki's:
Com Com: Taiko Drumming Class
EDU: SkillBridge
M&FRC: Right Start | Pre-Deployment

THURSDAY

2

Bowling: Kids Eat Free Night
Club: Tanuki's
EDU: MITA

9

Bowling: Kids Eat Free Night
Club: Tanuki's
EDU: MITA
M&FRC: Employment (2 day)
Grief & Loss: Divorce | Marriage
PCS: Promotion | Vesting in TSP
Continuation Pay

16

Bowling: Kids Eat Free Night
Club: Tanuki's
EDU: MITA
M&FRC: Entrepreneurship (2 day) | Bundles for Babies | Homebuying

23

Bowling: Kids Eat Free Night
Club: Tanuki's
EDU: MITA
M&FRC: Career & Credential Exploration (2 day) | Understanding the Love Languages | Spouse Monthly Meet Up

30

Bowling: Kids Eat Free Night
Club: Tanuki's
EDU: MITA
M&FRC: Credit Management

FRIDAY

3

Bowling: Laser Storm | Airmen's Alleys
Club: Aomori Eats | Tanuki's
Com Com: Friday Night Bingo
M&FRC: Cultural City Tour
Reintegration: Remote Tour Brief
ODR: Family Fun Night

10

SPECIAL EVENT
COMEDY SHOW
Arts & Crafts: Beginner Watercolor
Bowling: Laser Storm | Airmen's Alleys
Club: Aomori Eats | Tanuki's
Com Com: Friday Night Bingo
M&FRC: Cultural City Tour
Reintegration: Remote Tour Brief | Employment (2 day)
ODR: Family Fun Night

17

Bowling: Laser Storm | Airmen's Alleys
Mens Night
Club: Aomori Eats | Tanuki's
ITT: Tokyo Sumo (departs) | Hiroshima 4 Days (departs)
M&FRC: Cultural City Tour |
Reintegration: Remote Tour Brief | Entrepreneurship (2 day)
MTC: Sled the Day Away

24

Arts & Crafts: Needle Felting
Bowling: Laser Storm | Airmen's Alleys
Club: Aomori Eats | Tanuki's
M&FRC: Cultural City Tour |
Reintegration: Remote Tour Brief | Career & Credential Exploration (2 day)
Pre-Separation Briefing
ODR: Family Fun Night
SAC: Family Bingo

31

Arts & Crafts: Brushes & Beverages
Bowling: Laser Storm | Airmen's Alleys
CDC: Art Afternoon
Club: Aomori Eats | Tanuki's
Com Com: Friday Night Bingo
M&FRC: Cultural City Tour
Reintegration: Remote Tour Brief
ODR: Pool Party
Youth: National Arts Contest (submissions closed)

SATURDAY

4

SPECIAL EVENT
NEW YEAR KICK-OFF
Bowling: Laser Storm | Airmen's Alleys
Club: Tanuki's
ITT: Aomori Big Buddha

11

Arts & Crafts: Mini Monet
Bowling: Laser Storm | Airmen's Alleys
Club: Tanuki's
ITT: Tohoku Free Blades Ice Hockey Game
ODR: Team Misawa Resort Run

18

Bowling: Laser Storm | Airmen's Alleys
Club: Tanuki's
ODR: Distant Resort Run
M&FRC: Entrepreneurship (2 day)

25

SPECIAL EVENT
MISAWA CON
Arts & Crafts: Young Van Cogh
Bowling: Laser Storm | Airmen's Alleys | Movie & Bowl
Club: Tanuki's
ITT: Tsugaru Tetsudo Stove Train
ODR: Team Misawa Resort Run | Nanataki Falls Snowshoe Hike & Onsen
Maikado Cross-Country Ski Adventure



Tear here to hang on your fridge!

We've Got Your Bases Covered

We're here to help the military community and their families make the most of their money. **Our members could earn and save \$461* per year by banking with us.**

Visit navyfederal.org to join.

Insured by NCUA.



*Dollar value shown represents the results of the 2023 Navy Federal Member Giveback Study. The Member Giveback Study takes into consideration internal market analyses comparing Navy Federal products with industry national averages, as well as member discounts, incentives, and other savings. Image used for representational purposes only; does not imply government endorsement.
© 2024 Navy Federal NFCU 14233-E (9-24)



ARMY
MARINE CORPS
NAVY
AIR FORCE
SPACE FORCE
COAST GUARD
VETERANS

Our Members Are the Mission

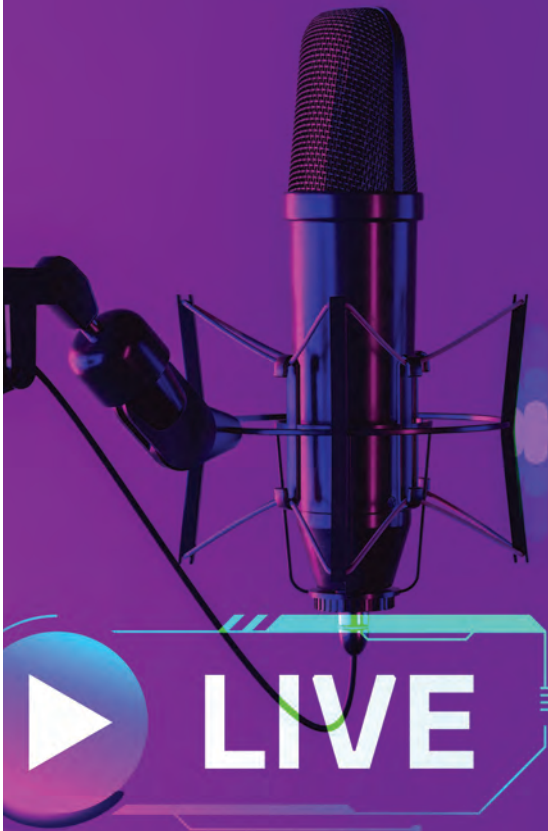
ON AIR

FSS HOUR

EVERY WEDNESDAY
7-8 a.m.

on AFN 1575 **THE EAGLE**

Tune in every Wednesday morning to find out what's happening with 35th FSS on Misawa, Air Base. **OUTDOOR RECREATION** is featured on the first Wednesday of every month. **YOUTH PROGRAMS** is featured on the second Wednesday of every month.



35TH FORCE SUPPORT SQUADRON

WINNING WEDNESDAY


35FSS
.COM

If you are not following us on social media then you are missing out!

Winning Wednesday is your weekly chance to win a **\$50 FSS GIFTCARD**. To enter, simply comment on our post on Facebook & Instagram and a random submission will be selected as the **WINNER!**



@35FSS



@MISAWAFSS

Let us handle ALL OF YOUR CAR NEEDS!

Car Rental

¥4,000-

*Yellow Plate 12hrs

Ask About Our Paint
and Body Work

- ▶ Used Car Sales
- ▶ Repair
- ▶ U.S. Forces Car Insurance
- ▶ Towing available ON BASE
- ▶ Free Title Transfer
- ▶ Road Tax
- ▶ Vehicle Junking

*Let us know if you live off base.



Used Car Center & Insurance

Commercial: 0176-53-5959

Monday-Friday | 8:30 a.m. - 5:30 p.m.

Saturday | 8:30 a.m. - 2 p.m.



Lucky Car Insurance

Bldg. 653, Room 126

Lucky's Used Car Center

6-110-5, Okamisawa, Misawa, Aomori

Paid advertisement. No federal endorsement of advertiser(s) intended.

Moving into an
Off-Base House??
Looking for stable
Internet Provider!?

WOW!
**Easy Sign-up
Online!**

HeroNet

Toll Free 0120-711-566
From US 011-81-176-53-5136
helpdesk@heronet.jp

Home Internet/Mobile Hotspot/SIM

Paid advertisement. No federal endorsement of advertiser(s) intended.

Sponsorship & Advertising Opportunities on Misawa Air Base!

With a population of **over 11,000**, our community enjoys the many opportunities to explore Japan and the Pacific region. **Advertise your business and establish brand awareness** by advertising on Misawa Air Base!

Visit 35fss.com/ads
to learn more.



SAVE THE DATE

Sponsored by



No federal endorsement of advertiser(s) intended.

THE BIG GAME

Monday, Feb. 10

Doors Open | 7 a.m.

Game Starts | 8:30 a.m.

Misawa Club



35 FSS / FSK
UNIT 5019, APO, AP 96319-5019