

JANUARY 2024

THE
RECE
MAGAZINE



2024

HAPPY NEW YEAR

**Health &
Wellness
Fair**

Page 2

**Winter
Reading
Program**

Page 4

**First
Friday
is Back!**

Page 5

**Air Force
Gaming
Competition**

Page 10



www.BealeFSS.com

Your guide to services and events provided by the 9th Force Support Squadron.

HEALTH & WELLNESS



INFO FAIR

JANUARY 5 • 10AM-2PM • FITNESS CENTER

WELLNESS INFO • HELPING AGENCIES • INFO BOOTHS

• BIGGEST LOSER KICKOFF & WEIGH-IN •



start date

JANUARY 5

MARCH 6

finish date

BEALE'S ANNUAL WEIGHT LOSS CHALLENGE!

This self-monitoring program is designed to encourage individuals to participate in activities that are considered to be beneficial to losing weight.

Weigh-in at the BEALE HEALTH & WELLNESS FAIR, January 6

from 1-2pm at the Fitness Center. Open to 18 & older.

Prizes awarded to those that lose the most weight over the two-month period.

Winners announced March 9

YOU'RE ON YOUR WAY TO A HEALTHIER YOU. GOOD LUCK!



Scan to sign up

Harris Fitness Center • 634-2258
www.BealeFSS.com/Harris-Fitness-Center



JANUARY 2024

SEE WHAT'S INSIDE

Health & Wellness Fair	2	Aero Club	15
Library	4	Family Child Care	16
Moos & Brews / Club	5	EFMP / Child Development Center	17
Venture Park / Rod & Gun Club	6	Fitness / Commercial Sponsorship	18
Outdoor Adventure Center / ITT	7	ICE Comments	19
Beale Lanes Bowling / Theater	8	NAF Human Resources	20
Auto Hobby / Arts & Crafts	9	9 FSS Food Guide	21
Community Center	10	FSS Hours & Directory	22
Youth Center	11	FSS Map	23
January Events Calendar	12-13		



9TH FORCE SUPPORT SQUADRON

Lt Col Melissa Day
Commander

Elizabeth Grabill
Deputy Director

MARKETING STAFF

Cathy Rodgers
Marketing Director

Amy Weaver
Commercial Sponsorship

Ricky Villegas
Visual Information, Digital Media

Tom Tennes
Visual Information, Print

The **RECCE MAGAZINE** is published monthly by the Beale AFB 9th Force Support Marketing Department. Contents of the RECCE Magazine are not necessarily the official views of, or endorsed by, the U.S. Government, the DoD, or the Department of the Air Force. The appearance of advertising in this publication does not constitute endorsement by the federal government.

ALL PROGRAMS, DATES AND TIMES ARE SUBJECT TO CHANGE WITHOUT NOTICE.

For information regarding advertising in the Recce Magazine or to sponsor a program or event contact:

9th Force Support Marketing Office
6249 C Street, Beale AFB, CA 95903
530.634.5407/634.2283



www.BealeFSS.com



www.facebook.com/Beale9FSS



www.instagram.com/Beale9FSS

Hub Zemke Library

WINTER READING CHALLENGE

January 1–31

Age categories:

0-5, 6-11, 12-17, 18 +

Most minutes read in each age group wins:

First place \$50 gift card

Second place \$25 gift card

Third place \$10 gift card

Sign up on our website @ bealefss.com/hub-zemke-library and choose the Beanstack button. Winners will be announced February 5.

Age category 0-5, parents or older siblings can read to the child for credit (visual reading only – no audiobooks).

**JANUARY
KIDS CRAFT BAGS**
Pick up a yeti craft bag
(while supplies last).

**"FROZEN"
STORY TIME**
January 18
3:30pm
Enjoy a wintery
story read by
Elsa & Anna followed
by a meet-n-greet.
You'll be able to get
photos, autographs &
ask them questions!



Hub Zemke Library • 634-2314

www.BealeFSS.com/Hub-Zemke-Library • www.facebook.com/HubZemkeLibrary

FIRST FRIDAY

AT MOOS & BREWS!

LET THE WEEKEND BEGIN!

JANUARY 5 • 3:09PM

EVERY FIRST FRIDAY, MOOS & BREWS CELEBRATES THE START OF THE WEEKEND WITH GAMES, MUSIC, AND DRINK SPECIALS.

Moos & Brews • 634-0936

BealeFSS.com/Moos-Brews • facebook.com/BealeMoosAndBrews



MOOS & BREWS / RECCE POINT CLUB

Paint & Sip

THURSDAY

JANUARY 11

6PM

\$15 Club Members
\$20 Non-Members

Please scan this code to sign up.



This month's featured painting



RECCE POINT CLUB • 634-2833

BealeFSS.com/Recce-Point-Club • facebook.com/ReccePointClub



NEW MOON NIGHT FIRE TRAINING

January 12 • 6-10pm

Receive Night Fire Training from a certified instructor on the use of firearms during darkness. Intended for experienced pistol shooters.

Topics include handheld flashlights, weapon mounted flashlights, tritium night sights, red dot sights, and lasers.

Sign up by January 10. Call for more details. Cost \$60 Includes instruction, and Night Fire equipment rental provided (bring your own tactical flashlight).



Rod & Gun Club • 788-2473
BealeFSS.com/Rod-n-Gun • facebook.com/BealeOAC



VENTURE PARK / ROD & GUN CLUB

VENTURE PARK

FREE

Driving Range Practice

JANUARY 3, 4 & 5 • 11AM-6PM

Enlisted Airmen up to E-5 can come out to Venture Park for the opportunity to enjoy the driving range for free (1 large bucket per day).

Must bring your own clubs.

OPEN WEDNESDAY-SUNDAY, 11AM-6PM

BEALE'S PREMIER ADVENTURE PARK! ACROSS THE PATIO FROM MOOS & BREWS.

Venture Park • 788-0192 • www.BealeFSS.com/VenturePark



TAHOE SKI SHUTTLE

We will deliver you and your gear to enjoy an epic day of skiing or boarding down the slopes.

January 7 • 7am-6pm

R4R Price: \$10 (trans., equip. rental)

Sign up by January 2

Please contact this facility for more details on R4R eligibility.



BLACKWOOD CANYON SNOWSHOE

Join us as we snowshoe our way through Lake Tahoe's scenic winter wonderland.

January 13 • 8am-6pm

\$18 (trans., snowshoes)

Sign up by January 9



We have a complete line of winter gear and equipment services.

Tune-ups, Waxing, Binding Mounting, Repairs, and more!



Outdoor Adventure Center • 634-2054
BealeFSS.com/OAC • facebook.com/BealeOAC



ITT TRIPS FOR THE ENTIRE FAMILY!



CALIFORNIA ACADEMY OF SCIENCES

Join us on an all-day trip to the California Academy of Sciences. Experience the aquarium, indoor rainforest, planetarium, and much more! (The Botanical Gardens, DeYoung Art museum and other nearby attractions are not included in trip price).

January 20 • 7am-8pm

Adults \$70 / Children \$60

(trans., Academy admission)

Sign up by January 16



JELLY BELLY TOUR & OUTLETS SHOPPING

Take a tour of the Jelly Belly Factory and see how this sweet treat is made. There will be plenty of samples to try.

We'll then have time to explore the many great deals at the Vacaville Premium Outlets.

January 27 • 9am-5pm

Adults \$23 / Children \$20

(trans., Jelly Belly tour)

Sign up by January 23



Information, Tickets & Travel • 634-4882

BealeFSS.com/Information-Tickets-Travel • facebook.com/BealeITT



MONTE CARLO

BOWLING

KNOCK DOWN MULTI-COLORED PINS TO WIN CASH!

JANUARY 13 • 7PM

9-Pin No-Tap | Bowl 3 Games | Entry fee \$20



Accepting sign ups
for Intramural
Bowling starting
January 22.

Closed New Years Day & Martin Luther King, Jr. Day
January 2, open for bowling, 12-8pm. Spare Time closed.

Beale Lanes • 634-2299



bealefss.com/beale-lanes • facebook.com/BealeLanes



MOVIE NIGHT

AT THE INDEPENDENCE CINEMA

Doors open at 6:30pm • SHOWTIME at 7pm

Barbie

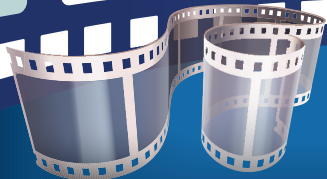
January 13
(Rated PG-13)

Ruby Gillman
**TEENAGE
KRAKEN**

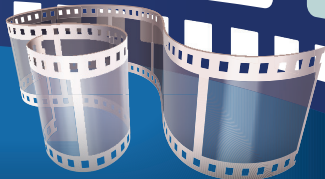
January 20
(Rated PG-13)

DOCTOR
STRANGE
IN THE
MULTIVERSE OF MADNESS

January 27
(Rated PG-13)



Snack Bar selling
some of your
theater favorites!



Independence Cinema • 634-3140
www.BealeFSS.com/Independence-Cinema





BEALE AIR FORCE BASE



AUTO HOBBY

AUTO HOBBY is the place for all your auto maintenance. Do it yourself in one of our 15 stalls or have one of our mechanics complete the task for you: engine analysis, coolant system flush, brake system flush, front wheel and/or rear wheel alignments. We offer discount prices on all brands of auto parts including hard-to-find items and accessories.

Our car wash, located across the street is available 24/7 and we even offer body shop repairs - on base!

Auto Hobby • 634-2292

www.BealeFSS.com/Auto-Hobby-Center • www.facebook.com/BealeAutoHobby



AIR FORCE



ARTS & CRAFTS

Your **ARTS AND CRAFTS CENTER** is here to serve you, whether it's classes to learn a new skill, artisans to answer your questions, engraving, embroidery, framing, screen printing, heat sublimation or vinyl cutting. We have a way to customize or personalize awards and keepsakes to make all your memories special.

Our retail store is the place to find all your Beale memorabilia: shirts, posters, mugs and more!

Valentine's Day is sooner than you think!
Order a romantic balloon bouquet and have it delivered on base!

Arts & Crafts • 634-2294

www.BealeFSS.com/Arts-Crafts-Center • www.facebook.com/BealeArtsAndCrafts

AUTO HOBBY / ARTS & CRAFTS

FRIENDS TRIVIA



January 19 • 5-6pm

Community Center California Café

Have fun and join us to test your fan knowledge involving one of the most well-known TV sitcoms. Prizes awarded!



AIR FORCE GAMING

MARIOKART COMPETITION



January 26 • 4-7pm

Hosted by Air Force Gaming

Brackets 12 & older, formed based on attendance.

PRIZES AWARDED!



Community Center • 634-3140
Facebook.com/BealeCAC • BealeFSS.com/CAC



JANUARY YOUTH PROGRAMS

SNOW PLAY DAY!



January 4, 8am-3pm

Enjoy a day tubing and playing in the snow, weather permitting.

\$30 non-member / Members 20% off
Sign up by 12/29 • Ages 9-18



Say it With Music Camp

January 8-12, 2:30-5:30pm

Learn music recording, songwriting, and music/film editing. Youth will receive a CD and video link of the final product.

Free • Sign up by 1/3 • Ages 9-12



Tween Night Out Let's Get Groovy!

January 12, 6pm-9pm

Come boogie down and get your groove on. Put on your funky threads, and enjoy snacks and sweet fondues.

\$20 non-member
Members 20% off

Sign up by 1/10 • Ages 9-12



FEAR factor and NERF Battle

January 19, 5-8pm

teens

test their courage through a series of fun Fear Factor-inspired challenges! Be prepared to get dirty and win PRIZES!

The challenges will be followed by a Nerf Gun battle. Enjoy food, gym games, rock wall, and more!

\$10 non-member / Members 20% off. Sign up by 1/17 • Ages 13-18

CHILD & YOUTH RESOURCE CENTER

DUPLO CHALLENGE

January 25, 9-11am

Introduction for young children to STEM activities with Duplo Blocks. Measure how tall you are, how many Duplos can you stack, and more.

Free • Call 634-4418 or 634.3539 to register.

LEGO BUILD-A-THON

January 26, 3:30-5:30pm

Challenge yourself and build with infinite possibilities as you face off other LEGO fanatics. Compete as a team or solo. Prizes awarded. 8-18 yrs.



Important: current members please register for trips and programs through your CYPBMS account. Non-members please call or visit the Youth Center for more guidance.



Youth Center • 634-4953

BealeFSS.com/Youth-Center • facebook.com/BealeYouthPrograms

Hub Zemke Library

WINTER READING CHALLENGE 2024

See page 4

January 1-31

Most minutes read in each group wins gift cards!

Sign up is on our website at www.bealefss.com/hub-zemke-library and choose the BEANSTACK button. Winners will be announced February 5, 2024.



SUNDAY

FOLLOW US ON



facebook.com/Beale9FSS



instagram.com/Beale9FSS

MONDAY

1

New Year's Day

TUESDAY

2

Family Day

7

Tahoe Ski Shuttle
(see page 7)

8

"Say it with Music"
Camp: Jan. 8-12
(see page 11)

9

14

**Martin Luther
King, Jr. Birthday**

15

16

21

22

23

28

29

30



WEDNESDAY	THURSDAY	FRIDAY	SATURDAY
<p>3 Free Driving Range <i>(see page 6)</i></p>	<p>4 Free Driving Range <i>(see page 6)</i> Snow Play Day <i>(see page 11)</i></p>	<p>5 Wellness Fair & Biggest Loser Kickoff <i>(see page 2)</i> Free Driving Range <i>(see page 6)</i> First Friday <i>(see page 5)</i></p>	<p>6</p>
<p>10</p>	<p>11 Paint & Sip <i>(see page 5)</i></p>	<p>12 Night Fire Training <i>(see page 6)</i> Tween Night Out <i>(see page 11)</i></p>	<p>13 Tahoe Snowshoe <i>(see page 7)</i> Movie Night <i>(see page 8)</i> Monte Carlo Bowl <i>(see page 8)</i></p>
<p>17</p>	<p>18 "Frozen" Story Time <i>(see page 4)</i></p>	<p>19 Teen Fear Factor & Nerf Challenge <i>(see page 11)</i> "Friends" Trivia <i>(see page 10)</i></p>	<p>20 CA Academy of Sciences Trip <i>(see page 7)</i> Movie Night <i>(see page 8)</i></p>
<p>24</p>	<p>25 Duplo Challenge <i>(see page 11)</i></p>	<p>26 "Mario Kart" Competition <i>(see page 10)</i> Lego Challenge <i>(see page 11)</i></p>	<p>27 Jelly Belly Tour <i>(see page 7)</i> Movie Night <i>(see page 8)</i></p>
<p>31</p>		<p>FOLLOW US ON</p>  <p>facebook.com/Beale9FSS</p>  <p>instagram.com/Beale9FSS</p>	<p>For details and updates on any of the events in the Recce Magazine please log on to the Current Events page on our website at www.bealefss.com</p>

JANUARY CALENDAR OF EVENTS



Hard Rock
HOTEL & CASINO

SACRAMENTO
AT FIRE MOUNTAIN

BINGO

GAMES PAY UP TO \$1,199

MONDAY-TUESDAY: 1PM - 3PM - 5PM - 7PM

WEDNESDAY & THURSDAY SESSION MADNESS: 1PM - 5PM

SPECIAL OFFER!

MENTION **BEALE BINGO** AT UNITY PLAYER'S CLUB TO RECEIVE \$10 OFF YOUR BUY-IN!

SCAN FOR
MORE INFO



Great White



S.LAUGHTER
LIVE!

JANUARY 18

HARD ROCK LIVE SACRAMENTO

[ticketmaster.com](https://www.ticketmaster.com)

3317 FORTY MILE ROAD, WHEATLAND | [HARDROCKHOTELSACRAMENTO.COM](https://www.hardrockhotelsacramento.com)

PAID AD. NO FEDERAL ENDORSEMENTS OF SPONSORS INTENDED



**CIVILIANS, DoD EMPLOYEES,
AND MILITARY MEMBERS!**

COME FLY WITH US!

Take that first step to becoming a pilot with an Introductory Flight from YOUR Beale Aero Club. You will be given hands-on experience and shown the basics of flight. Get started now and call 530-749-7696 to schedule your Introductory Flight today!

\$150 Includes approximately one hour flight time, as well as ground time with instructor.

**THE BEALE AERO CLUB FLIGHT TRAINING CENTER OFFERS
Private Pilot Ground School and Specialty Flight Training.**

The office and fleet location are at the Yuba County Airport, 1364 Sky Harbor Dr., Olivehurst, CA.

Aero Club • 530-749-7696

www.BealeFSS.com/Aero-Club • www.facebook.com/BealeAeroClub

**BEALE AERO CLUB
NOW HIRING!
CERTIFIED FLIGHT
INSTRUCTORS**



The Beale Aero Club is looking for experienced Certified Flight Instructors, CFI/CFII, to join our team to teach and mentor our growing number of student pilots. If you are interested please submit your resume or inquiries to BealeAeroClubFTC@gmail.com or call 530-749-7696.

The office and fleet location are at the Yuba County Airport, 1364 Sky Harbor Dr., Olivehurst, CA.

Aero Club • 530-749-7696

www.BealeFSS.com/Aero-Club • www.facebook.com/BealeAeroClub



FAMILY CHILD CARE

Become an FCC Provider

Manage your own business • Set your own hours

Free training • Transferable career

Great Government subsidies:

▶▶ Initial Certification or Renewal - **\$300**

▶▶ FCC Provider Transfer - **\$1,000**

▶▶ Providers own child - **\$75-100/week**

▶▶ Provider receives weekly USAF subsidy - **\$305/child**

(Some restrictions apply)

Family Child Care • 634-4418

www.BealeFSS.com/family-child • 9FSS/FSFF@us.af.mil

PARTNERING WITH
BEALE AFB TO
POWER A BRIGHTER
FUTURE FOR
YUBA COUNTY



yubawater.org

f t i @ v in @YubaWater

Paid ad. No federal endorsement
of sponsors intended.



EFMP & RESPITE CARE PROGRAM

Receive 40 hours per month of free child care for military families with a disabled child.



If your child has a disability, your family may qualify to be Q-Coded and registered with the EFMP program with the Air Force.

If you are verified as an EFMP family, you can qualify for Respite Care for the child with a disability, and for all the siblings as well. The hours and the respite care providers are scheduled monthly through the FCC Coordinator.

Contact the FCC Coordinator at (530) 634-4418 or bealefcc@gmail.com



To learn more about the EFMP Program, please contact **Kim Hogue** at kimberly.hogue.1@us.af.mil or the EFMP Medical Specialist,

Melissa Gardner at melissa.gardner.ctr@us.af.mil.

The Beale Child Development Center is looking for Early Childhood Professionals, entry through leadership levels!

OPPORTUNITIES FOR:

- Great Starting Wages • Good Benefits
- Guaranteed 20 Hours per Week
- Accredited Education and Training
- Military Spouse Preference

Plus, 100% free child care for 1st child and 25% off additional child after Multiple Child Discount.

HOW TO APPLY

- Log on to www.usajobs.gov and create an account.
- Search KEYWORD: **Child and Youth Program Assistants**
- Enter LOCATION: **Beale AFB**

Follow direction to apply and wait for a response.

FOR ASSISTANCE

Email: 9FSS.FSMH@us.af.mil or NAF Human Resources at 530-634-2240

Child Development Center • 634-4717

www.BealeFSS.com/CDC • www.facebook.com/BealeYouthPrograms

EFMP / CHILD DEVELOPMENT CENTER



GROUP FITNESS FOR EVERYONE! AT THE OMNI

Shape Up!

This total-body workout combines the elements of cardio, body awareness, muscle conditioning and flexibility in this, fun high-energy, totally cardio workout! Turn up the beat!

Freestyle Spin w/Core Hicker Tuesdays, 5:30-6:30am

Freestyle Spin w/Core Hicker Wednesdays, 12:30-1:30pm

A cardio spin class that gets you sweating with interval sprints, flat roads and hill climbs followed by a core workout using a variety of exercises like planks, sit-ups and more!

Body Blast

This intense workout will really get your heart pumping.

You're off to the races with cardio riding formulated to increase your endurance, power and speed.

Note: Classes and instructors subject to change without notice.

Mondays, 12-1pm

Tuesdays, 5:30-6:30am

Wednesdays, 12:30-1:30pm

Thursdays, 5:30-6:30am



Omni Fitness Center • 634-2258

BealeFSS.com/HFC • facebook.com/HarrisFitnessCenter



FITNESS & SPORTS



REACH THE MILITARY MARKET AND UNLOCK THE POSSIBILITIES WITH COMMERCIAL SPONSORSHIP OPPORTUNITIES

For more information on sponsorship opportunities
at Beale Air Force Base,
please contact Amy Weaver at
530-634-5407 or amy.weaver.5@us.af.mil





**WE WANT YOUR
FEEDBACK!**

**Your feedback is important to us!
Your comments, good or bad, help
us improve our facilities or
let us know we're doing it right!**



Scan this code to submit
a comment card after
your visit at one of
our FSS facilities.



Become a Federal Employee at Beale AFB

Join the TEAM!



CREATE YOUR PROFILE & APPLY ONLINE

@ [USA JOBS.GOV](https://www.usajobs.gov)

An Equal Opportunity Employer
NON-APPROPRIATED FUND (NAF) JOBS
 Steady Employment | Regular & Flex Positions

Benefits*:

Promotion Opportunities
 Health, Dental & Life Insurance
 Awards • 401 (k) Savings Plan
 Holiday & Overtime Pay
 Shift Differential & Sunday Premium
 Night Pay Differential
 Worker's/Unemployment Compensation
 Military Leave • Administrative Leave
 Annual & Sick Leave
 Court Leave • Maternity Leave
 Family & Medical Leave Act (FMLA)
 Leave for Adoption

** Not all benefits available to all positions*

Access to:

Hub Zemke Library
 Outdoor Adventure Center
 Information, Tickets & Travel
 Harris Fitness Center
 Contrails Dining Facility
 Beale Lanes Bowling Center
 Youth Center
 Child Development Center
 Community Center
 Arts & Crafts • Auto Hobby
 Aero Club • Rod & Gun Club
 Venture Park

CURRENTLY HIRING*

**Recreation Assistant (Engraver)
 Recreation Aide**

**Child & Youth Program Assistant
 Guest Services Representative**

**Job listing current at time of print*

**SCAN THE QR CODE WITH YOUR PHONE TO GO
 DIRECTLY TO OPEN POSITIONS AT BEALE AFB**



For assistance, email 9FSS.FSMH@us.af.mil

NAF Human Resources • 634-2240

www.BealeFSS.com/NAF • www.facebook.com/Beale9FSS

FSS QUICK GLANCE FOOD GUIDE



Serving Lunch & Dinner

Wednesday–Sunday, 11am–7pm

Burgers • Sandwiches • Kids Meals • Milkshakes • Beverages



Serving Breakfast, Lunch & Dinner

Monday–Thursday, 7am–2pm, 5–8pm / Friday, 12–7pm

Breakfast Items • Burgers • Sandwiches • Pizza • Beverages



Serving Lunch

Wednesday–Friday, 11am–1pm

Steak Sandwiches - Wednesday

Bratwurst - Wednesday - Friday



DRAGON'S LAIR

FLIGHTLINE KIOSK

Breakfast, Lunch, Dinner and Simply-to-Go

See current hours of operation on page 23.



CONTRAILS

Breakfast, Lunch & Dinner

See current hours of operation on page 23.

Entree Specials • Soups & Salads • Pizza • Healthy Choices • Grab & Go

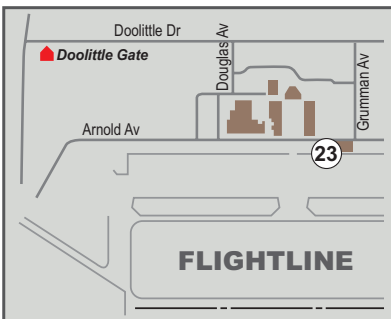
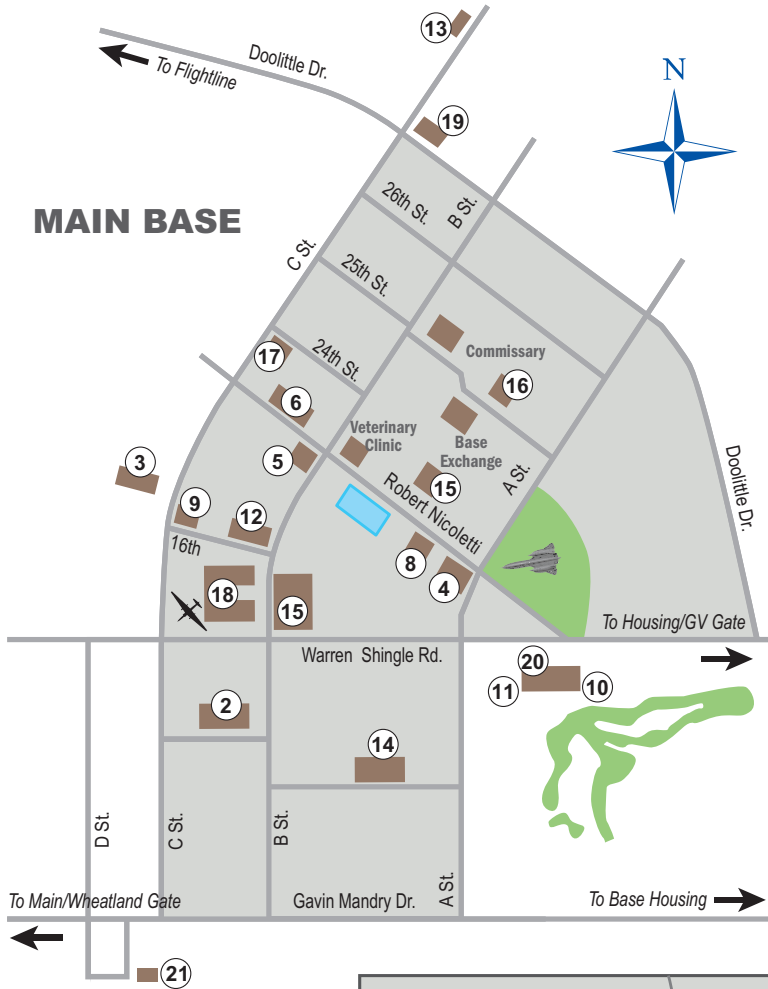
Hours of operation and food choices subject to change.

9 FSS HOURS OF OPERATION

- Aero Club** 530-749-7696
Yuba County Airport, Olivehurst
9am-4pm M-Th
Aero Club Members 24/7
Closed holidays
- 3 Airman Leadership School** 634-3332
2401 C Street
7:30am-4:30pm M-F
Closed weekends/holidays/fam. days
- 4 Arts & Crafts Center** 634-2294
17651 Warren Shingle Road
9am-4pm Tu-F
Closed weekends/holidays
- 4 Auto Hobby Center** 634-2296
17651 Warren Shingle Road
7am-6pm M-F
9am-3pm (no mechanic) Sat
Closed Sundays/holidays
- 5 Beale Lanes** 634-2299
17800 Robert Nicoletti Way
12-8pm M-F
12-9pm Sat
12-4pm Sun
Closed holidays/fam days
- 6 Child Development Center** 634-4717
18000 Robert Nicoletti Way
6:30am-5:30pm M-F
Closed weekends/holidays/fam days
- 7 Child & Youth Resource** 634-4418
5190 Camp Beale Hwy, Bldg. 3308
9am-3pm M-F
Closed weekends/holidays/fam days
- 8 Community Center** 634-3140
17700 Robert Nicoletti Way
12-8pm M-F
12-6pm Weekends
Closed holidays/family days
- 9 Contrails (DFAC)** 634-2537
17853 16th Street
Simply to Go: 5:30am-7pm M-F
Simply to Go: 7:30am-6:30pm Wkd/hol/fam day
Breakfast: 5:30-8am M-F
Breakfast: 7:30-9am Wkd/hol/fam day
Lunch: 10:30am-1:30pm Daily
Dinner: 4:30-7pm M-F
Dinner: 4:30-6:30pm Wkd/hol/fam day
Midnt Meal: 10:30pm-12:30am Daily
- 23 Dragon's Lair** 634-0896
Bldg 1060, Flightline
Simply to Go: 6am-8pm M-F
Breakfast: 6-8am M-F
Lunch: 10:30am-1:30pm M-F
Dinner: 4:30-7pm M-F
- 12 Education Center** 634-2525
17849 16th Street
8am-3pm M-F
Closed weekends/holidays/family days
- 13 Fam Camp** 634-3382
220 Cedar Lane
9am-4pm M-F
9am-12pm Sat
(Contact Camp Host) Sat, Sun, Hol
- 7 Family Child Care** 634-4418
5190 Camp Beale Hwy, Bldg. 3308
By appt. M-F
- 15 Fitness Center/Omni** 634-2258
2418 B Street
5am-8pm M-F
8am-5pm Wkd/hol/fam days
- 14 Gold Country Inn** 634-2953
24112 A Street
Open 24/7
- 12 Hub Zemke Library** 634-2314
17849 16th Street
8am-6pm M-Th
8am-4pm F
9am-2pm Sat
Closed Sundays/holiday/fam. days
- 16 Independence Cinema** 634-3140
25th Street, Bldg. # 2474
(Doors open 30 min. prior) 7pm Sat
- 8 Information, Tickets, Tours** 634-4882
17700 Robert Nicoletti Way
11am-5pm M-F
Closed wknds/holidays/fam. days
- 2 Military & Family Readiness** 634-2863
17800 B Street
7:30am-4:30pm M,T,Th,F
7:30am-1:30pm W
Closed weekends/holidays/fam. days
- 18 Military Personnel** 634-4200
17852 16th Street
7:30am-3:30pm M-F
Closed weekends/holidays/fam. days
- 11 Moos & Brews** 634-0936
17440 Warren Shingle Road
11am-7pm W-Sun
Closed holidays
- 18 NAF Human Resources** 634-2240
17852 16th Street
7am-4pm M-F
Closed weekends/holidays/fam. days
- 17 9 FSS Marketing Office** 634-2275
6249 C Street
7am-4pm M-F
Closed weekends/holidays/fam. days
- 19 Outdoor Adventure Center** 634-2054
17630 Doolittle Drive
9am-5pm M-F
9am-1pm Sat/Fam Days
Closed Sundays/holidays
- 20 Recce Point Club** 634-2833
17440 Warren Shingle Road
Office hours: 7:30am-4:30pm M-F
Closed weekends/holidays/fam. days
- 21 Rod & Gun Club** 788-2473
7950 D Street
9am-4pm W-Sun
9am-1pm Fam Days
Closed holidays
- 5 Spare Time Grill** 634-2304
17800 Robert Nicoletti Way
7am-2pm / 5-8pm M-F
Closed weekends/holidays/fam. days
- 10 Venture Park** 788-0192
17440 Warren Shingle Road
11am-6pm W-Sun
Closed holidays
- 22 Youth Programs** 634-4953
15160 Gavin Mandry Dr.
6:15am-6pm M-F
Closed weekends/holidays/fam. days

All 9 FSS Facilities are closed on weekends, holidays and/or ACC Family Days unless otherwise noted.
Hours of operation are subject to change without notice.

9 FSS FACILITY MAP





VALENTINE'S

- DAY -

Balloon Special

**VALENTINE'S DAY IS
SOONER THAN YOU THINK!
ORDER A ROMANTIC BALLOON
BOUQUET AND HAVE IT
DELIVERED ON BASE**

**CONTACT ARTS & CRAFTS FOR DETAILS
634-2294**

**9 FSS Marketing
6249 C Street
Beale AFB, CA 95903**

**FIRST CLASS
PRESORTED
POSTAGE & FEES PAID
MARYSVILLE, CA
PERMIT NO. 26**