



# THE GALACTIC EDITION

**MAY 2024**



**“Star Wars” Week**  
pg 2

**Lifeguards Wanted**  
pg 6

**The A Club’s Latin Night**  
pg 7

**Arts & Crafts Class**  
pg 18

**Mike Super Magic Show**  
pg 20

BEALE AIR FORCE BASE



Your guide to services and events provided by the 9th Force Support Squadron

# STAR WARS WEEK



***HUB ZEMKE LIBRARY  
MAY 4-11***


**Stop in for photo ops with props, prizes for “Star Wars”  
book check-outs, and a children’s trivia challenge.  
Call Hub Zemke Library for details.**



Hub Zemke Library • 634-2314  
[BealeFSS.com/Hub-Zemke-Library](http://BealeFSS.com/Hub-Zemke-Library)  
[facebook.com/HubZemkeLibrary](https://facebook.com/HubZemkeLibrary)



"Serving those who serve."



# THE RECCE MAGAZINE

## May 2024

**Enjoy our Star Wars-inspired theme.  
See what's inside!**

"Star Wars" Week	2	Beale Lanes	16
Library	4-5	Family Child Care	17
Youth / Pools	6	Arts & Crafts Center	18
Youth / Rece Point Club	7	Auto Hobby / Aero Club	19
Community Center / Cinema	8	Mike Super Magic Show	20
Rod & Gun Club / Venture Park	9	9 FSS Food Guide	21
ITT Trips	10	FSS Hours & Directory	22
OAC Trips	11	FSS Map	23
List of Events	12-13	Memorial Day Hours	24
Sports Day / Moos & Brews	15		



### 9TH FORCE SUPPORT SQUADRON

Lt Col Melissa Day  
Commander

Elizabeth Grabill  
Deputy Director

#### MARKETING STAFF

Cathy Rodgers  
Marketing Director

Amy Weaver  
Commercial Sponsorship

Ricky Villegas  
Visual Information, Digital Media

Ivonne Aponte de Ramos  
Visual Information, Print

The **RECCE MAGAZINE** is published monthly by the Beale AFB 9th Force Support Marketing Department. Contents of the RECCE Magazine are not necessarily the official views of, or endorsed by, the U.S. Government, the DoD, or the Department of the Air Force. The appearance of advertising in this publication does not constitute endorsement by the federal government.

**ALL PROGRAMS, DATES AND TIMES ARE SUBJECT TO CHANGE WITHOUT NOTICE.** For information regarding advertising in the Recce Magazine or to sponsor a program or event contact:  
9th Force Support Marketing Office  
6249 C Street, Beale AFB, CA 95903  
530.634.5407/634.2283



[www.BealeFSS.com](http://www.BealeFSS.com)



[facebook.com/Beale9FSS](https://facebook.com/Beale9FSS)



[instagram.com/Beale9FSS](https://instagram.com/Beale9FSS)

# MAY THE BE

## STAR WARS WEEK

May 4–11

Stop in for photo ops with props, prizes for "Star Wars" book check-outs, and a children's trivia challenge.

### Monthly Craft Bag All month

Pick up a "Star Wars" themed craft bag (*while supplies last*).

### Dungeons & Dragons Saturdays • 10am–2pm

New to D&D? Pop in and we will get you started!

### Loud Saturdays

There's no shhhh on Saturdays! Play with Legos, Nintendo Switch, and XboxOne game consoles (*one-hour limit*), magnetic tiles, and a giant Connect 4.

### "May the 4<sup>th</sup> Be with You" Trivia at the Library

May 4 • 10–11:30am

Trivia rounds for all ages. Prizes for trivia round winners, bonus question winners, best costume, and a grand prize.

### "Star Wars" Story Time May 16 • 10:30am & 4:30pm

Preschoolers will enjoy "Star Wars: A Jedi You Will Be" by Preeti Chhibber and take home a build-a-droid craft.

# FOURTH WITH YOU

## DIGITAL RESOURCES HIGHLIGHT DO-IT-YOURSELFERS

### Home Improvement

**Source** provides users with detailed "how to" information covering a variety of home improvement and repair projects.

**Gale OneFile Home Improvement** has millions of articles for DIY projects, architectural techniques, and materials selections. Access at [BealeFSS.com/Hub-Zemke-Library](http://BealeFSS.com/Hub-Zemke-Library) and choose the Digital Resources button, scroll down to the DIY link.



HUB ZEMKE LIBRARY



Hub Zemke Library • 634-2314  
[BealeFSS.com/Hub-Zemke-Library](http://BealeFSS.com/Hub-Zemke-Library)  
[facebook.com/HubZemkeLibrary](https://facebook.com/HubZemkeLibrary)



## YOUTH PROGRAMS

## YOUTH PROGRAMS EVENTS

### Tween Lock-In

**May 10-11 • 7pm-7am**

Enjoy a night of locked-in fun, food and beverage provided. Sign up by May 8 in CYPBMS.

**\$40 non-members**

**20% off YP members**

### Open Rec Membership Drive

**May 31 • 4:30-6pm**

Learn what Youth Programs has to offer and how to sign up with CYPBMS. Enjoy games, activities, and water play. Open to all base families. **Free for members** and families looking for information. **\$5 for youth drop-ins without membership.**



Youth Center • 634-4953  
[BealeFSS.com/Youth-Center](http://BealeFSS.com/Youth-Center)  
[facebook.com/BealeYouthPrograms](https://facebook.com/BealeYouthPrograms)



## BASE POOLS

## LIFEGUARDS WANTED!

**Apply at USAJobs.gov**

**Keyword: NAF Location: Beale AFB**

**Job Title: Recreation Aide (Lifeguard)**

Must be 16 & over to apply (ages 16-17 need parental approval). Applicant must be processed as an employee before the base pools open for the Summer 2024 pool season.

### Get Certified!

The Outdoor Adventure Center is offering lifeguard training and certification. Apply now.



Outdoor Adventure Center • 634-2054  
[BealeFSS.com/OAC](http://BealeFSS.com/OAC)  
[facebook.com/BealeOAC](https://facebook.com/BealeOAC)





# SQUISH PILLOW PAJAMA PARTY

**May 17 • 6-10pm**

Bring your favorite squish pillow or stuffy to party with us in a fun-filled night, dinner provided, ages 5-12. Sign up by May 1 in CYPBMS.

**\$30 for non-members**  
**20% off for YP members**

**YOUTH PROGRAMS**



Youth Center • 634-4953  
[BealeFSS.com/Youth-Center](http://BealeFSS.com/Youth-Center)  
[facebook.com/BealeYouthPrograms](https://facebook.com/BealeYouthPrograms)



# THE A CLUB'S LATIN NIGHT

**May 3 • 8pm-12am**

Come out for the nightclub atmosphere featuring DJ and bar. Alcohol wrist bands will be provided to attendees 21+ and IDs verified at the door. \$5 entry. *A Club is an initiative designed by dorm residents but open to all with base access, 18 & older.*

**RECCE POINT CLUB**

# PAINT & PIZZA

**May 23 • 6pm**

Get crafty and eat a slice, free for Club members/\$15 for non-members.



Recce Point Club • 634-2833  
[BealeFSS.com/Recce-Point-Club](http://BealeFSS.com/Recce-Point-Club)  
[facebook.com/ReccePointClub](https://facebook.com/ReccePointClub)



"Serving those who serve."

COMMUNITY CENTER



## MOM & ME CRAFTS

May 6 • 3:30–5pm  
Community Center

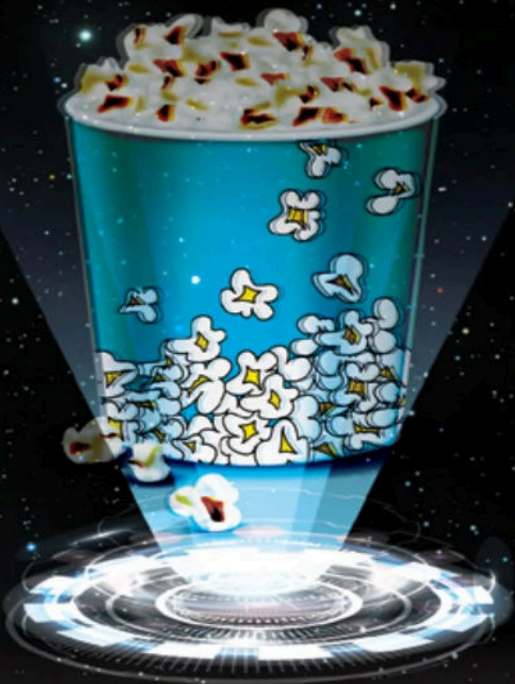
Come craft a free Mother's Day gift. Free rose for mom and free cookies (*while supplies last*). Call the Community Center for details.



Community Center • 634-3140  
BealeFSS.com/CAC  
facebook.com/CAC



INDEPENDENCE CINEMA



## FREE MOVIE NIGHT AT INDEPENDENCE CINEMA

May 10 • 5pm

Star Wars The Phantom Menace  
(Rated PG)

Concessions available for purchase.



Independence Cinema • 634-3140  
BealeFSS.com/BealeMovieTeather  
facebook.com/independence-cinema





# "MAY THE 4<sup>TH</sup> BE WITH YOU" SKEET COMPETITION

**May 4 • 9am-12pm**

Build your team of 4, and choose who your squad will represent; Rebels or the Galactic Empire. Take down "space ships" throughout each round of clays. The winning squad will receive a prize valued at \$200 and bring balance to the Force. Sign up by May 1, \$20 entry.

Photo by Anthony Duran on Unsplash



**ROD & GUN CLUB**



Rod & Gun Club • 788-2473  
BealeFSS.com/rod-n-gun  
facebook.com/BealeOAC



## VENTURE PARK DISCOUNT

**All Month**

**25% off** on all **retail merchandise** such as baseball caps, shirts, and yard games. Call Venture Park for details.

**GALACTIC SALE**

**VENTURE PARK**



Venture Park • 788-0199  
BealeFSS.com/venturepark  
facebook.com/BealeOAC





## ITT TRIPS FOR THE ENTIRE FAMILY!

### Crocker Art Museum & Old Sac May 18 • 9am-8pm

The museum is renowned for its collection of Californian art, and both modern and classical European art. Historic Old Town Sacramento is a ten-minute walk away, full of shopping, dining, and historic attractions. **\$20 adults/ \$15 youth (6-17)/free for 5 & under**, includes transportation & admission. **Sign up by May 16.**

### R4R Trip to Monterey Bay Aquarium & Whale Watching May 25-26 • 7am-8pm

Day one, enjoy the aquarium and Cannery Wharf. Day two guarantees whale sightings! **R4R\* price \$50 (regular price \$275)** includes transportation, aquarium, and whale watching tour. Guests are responsible for their own hotel reservations. **Sign up by May 21.**

*\*For SAPI & DAP eligibility, see R4R information in page 11.*



Information Tickets & Travel • 634-4882  
[BealeFSS.com/Information-Tickets-Travel](http://BealeFSS.com/Information-Tickets-Travel)  
[facebook.com/BealeITT](https://facebook.com/BealeITT)





# OUTDOOR RECREATION TRIPS

## Blackwood Canyon Snowshoeing Hike

**May 4 • 8am-6pm**

Spend the day at Lake Tahoe's scenic Blackwood Canyon. **\$18** includes transportation and equipment. **Sign up by May 2.**

## R4R Ski Trip to Tahoe

**May 11 • 7am-6pm**

**R4R\* price \$10 (regular price \$100)** includes transportation and equipment. **Sign up by May 9.**

*\*For RecOn eligibility, see R4R information below.*

Call the Outdoor Adventure Center for details.

## Recharge for Resiliency (R4R)



Resiliency programs are subsidized by the Air Force. If you qualify (see below) you pay the R4R rate. If you do not, you may be eligible at the regular rate if space is available after R4R recipients have signed up.

**Single Airman Program Initiative (SAPI)** events are for active duty and reserve members without a spouse.

**RecOn** events are for all active duty, reservists and their family members.

**Deployed Affected Programs (DAP)** events are for deployed-affected AF personnel and their family members from receipt of orders, during deployment, and up to a year post-deployment.

OUTDOOR ADVENTURE CENTER



Outdoor Adventure Center • 634-2054

BealeFSS.com/OAC

facebook.com/OAC



# **MAY LIST OF EVENTS**

## **Reoccurring events**

**Mondays:** Monday Madness, see pg 16

**Saturdays:** Dungeons & Dragons, see pg 4

Loud Saturdays, see pg 4

**May  
3**

Latin Night, see pg 7  
First Friday, see pg 15

**May  
4**

"Star Wars" Week starts, see pg 2  
"May The 4<sup>th</sup> Be With You" Trivia, see pg 4  
Skeet Competition, see pg 9  
Snowshoe Hike, see pg 11

**May  
6**

Mom & Me Crafts, see pg 8  
Monday Madness Bowling, see pg 16

**May  
10**

Movie Night, see pg 8  
Tween Lock-In, see pg 6  
Care Giver Appreciation Day, see pg 17

**May  
11**

R4R Ski Trip, see pg 11

**May  
13**

Monday Madness Bowling, see pg 16  
Resin Cutting Board Class, see pg 18

**May  
16**

"Star Wars" Story Time, see pg 4



**May  
17**

**Squishmallow Pajama Party, see pg 7**

**May  
18**

**Museum & Old Sac Trip, see pg 10  
Monte Carlo Night, see pg 16  
Free Bay Time, see pg 19  
Painting with Paper, see pg 18**

**May  
23**

**Paint & Pizza, see pg 7  
Beale vs. Travis Sports Day, see pg 15**

**May  
25**

**R4R Monterrey Trip, see pg 10  
Will's No Tap Tournament, see pg 16**

**May  
27**

**Memorial Day, see back cover for holiday  
hours of operation**

**May  
28**

**Mike Super Magic Show, see pg 20**

**May  
31**

**Open Rec Membership Drive, see pg 6**

# MIKE SUPER MAGIC & ILLUSION

**MAY 28  
6 PM**

See pg 20 for details



"Serving those who serve."



# BINGO



SCAN FOR MORE INFO

## GAMES PAY UP TO \$1,199

### MONDAY - THURSDAY

### 1PM & 5PM

**SPECIAL OFFER!** MENTION **BEALE BINGO** AT UNITY PLAYER'S CLUB TO RECEIVE \$10 OFF YOUR BUY-IN!



# SATCH VAI

US TOUR

## JOE SATRIANI & STEVE VAI

### MAY 11

[ticketmaster.com](http://ticketmaster.com)

3317 FORTY MILE ROAD, WHEATLAND | [HARDROCKHOTELSACRAMENTO.COM](http://HARDROCKHOTELSACRAMENTO.COM)

PAID AD. NO FEDERAL ENDORSEMENTS OF SPONSORS INTENDED



# Join us for the first, Beale vs. Travis Sports Day

## May 23 • 8am–4:30pm

Only Active Duty or DoD Civilians can participate.  
All others can cheer Beale Airmen on!  
For details, please call Harris Fitness Center  
*This has been designated as an alternate duty location.*

### Sports/Events:

- 5K Warrior Run Kick Off
- 3-on-3 Basketball
- Volleyball
- Kickball
- 1 Pitch Softball
- Obstacle Course
- Bench Press
- Dodge Ball (Chiefs/Eagles)
- Flag Football
- Tennis/Pickle ball
- Racquetball
- Golf
- Bowling
- Tug of War
- Ping Pong
- Corn Hole
- Climbing



Scan to sign up

**HARRIS FITNESS CENTER**



Harris Fitness Center • 634-2258  
BealeFSS.com/HFC  
facebook.com/HarrisFitnessCenter



# FIRST FRIDAY

## May 3 • 3:09pm

Start the month and, more importantly, the weekend at Moos & Brews. Enjoy drink specials and, free pizza (*while supplies last*). Call the Recce Point Club for details, 634-2833.

**MOOS & BREWS**



Recce Point Club • 634-2833  
BealeFSS.com/BealeMoos-Brews  
facebook.com/BealeMoosAndBrews



## BOWLING EVENTS

### Monday Madness

**Mondays • 12–8pm**

\$2 per person, per game (call ahead for lane availability).

\*Beale Lanes will be closed on May 26 & 27 for Memorial Day weekend.

### Monte Carlo Night Bowling

**May 18 • 7pm**

Knock down multi-colored pins to win-cash! Check-in at 6:30pm, \$20.

### Will's No Tap Tournament

**May 25 • 7pm**

Receive a strike for knocking down 9 pins, \$40.

### Kids Summer Bowling

**Begins June 1**

\$5 per person for 1-hour unlimited bowling, shoes included. Parents can get the same rate when bowling with their kids. **\*Not valid with reservations**

### Summer Leagues Forming Now!

Contact Beale Lanes for details.



Beale Lanes • 634-2299  
 BealeFSS.com/Beale-Lanes  
 facebook.com/BealeLanes





"Serving those who serve."

# CAREGIVER APPRECIATION DAY

May 10

Remember to say "Thank You" to your caregiver! Here are some ways to compliment them:

*"I really appreciate when you..."*

*"I value what you do when..."*

*"It was so thoughtful of you to..."*

For information on Family Child Care (FCC) homes or becoming an FCC provider, contact the FCC.

FAMILY CHILD CARE



Family Child Care • 634-4418  
BealeFSS.com/Family-Child  
9FSS/FSFF@us.af.mil



PARTNERING WITH  
BEALE AFB TO  
POWER A BRIGHTER  
FUTURE FOR  
YUBA COUNTY



yubawater.org

f t i y v in @YubaWater

Paid ad. No federal endorsement of sponsors intended.





## **ARTS & CRAFTS CENTER SERVICES AND CLASSES**

### **Arts & Crafts Services Custom Framing**

Choose from a large variety of mouldings, mats, shadow boxes, and other framing materials for your photos, fine art, diplomas, recognitions, retirement gifts, etc. Place your order now!

### **Resin Cutting Board Class May 13 & 15 • 2- 4pm**

Learn the basics of resin pouring in this 2-day class, \$65 includes all supplies.

### **Painting with Paper May 18 • 2-4pm**

This class will be a guided exercise in abstract minimalism and collage on canvas, \$65 includes all supplies.

Call Arts & Crafts for details.



# AUTO DEALS!

**SPACEMECH NOT INCLUDED\***

## Free Carwash with A/C Service All Month

Free carwash with A/C refresh or check, \$75 + freon (*while supplies last*).

## Free Bay Time

**May 18 • 9am–3pm**

First hour free for DIY projects.

Call Auto Hobby for details.

**AUTO HOBBY**



Auto Hobby • 634-2292  
BealeFSS.com/Auto-Hobby-Center  
facebook.com/BealeAutoHobby



# PRIVATE PILOT GROUND SCHOOL

**CLASSES FORMING NOW**

## Open to Military & Authorized Patrons

10-week course encompasses Aircraft Systems, Aerodynamics, Airport Layouts & Markings, Communications & Navigation, and more. Ask about **R4R discounts for Single Airmen (SAPI) and Deployed Affected (DAP)**.

*\*For SAPI & DAP eligibility, see R4R information in page 11.*

**AERO CLUB**



Beale AFB Aero Club • (530) 749-7696  
BealeFSS.com/Aero-Club  
facebook.com/BealeAeroClub  
Located at the Yuba County Airport  
1364 Sky Harbor Dr., Olivehurst, CA



# MIKE SUPER

## MAGIC & ILLUSION

★ ★ ★ ★ ★ ★ ★ ★ ★ ★  
**FINALIST**  
★ ★ ★ ★ ★ ★ ★ ★ ★ ★  
**ON AMERICA'S  
GOT TALENT!**

★ ★ ★ ★ ★ ★ ★ ★ ★ ★  
**WINNER**  
★ ★ ★ ★ ★ ★ ★ ★ ★ ★  
**OF NBC'S  
PHENOMENON!**



**LIVE STAGE**  
AN AIR FORCE ENTERTAINMENT PRODUCTION

**FREE!**  
**Family Friendly**

# 2024 ALL NEW SHOW!

[WWW.MIKESUPER.COM](http://WWW.MIKESUPER.COM)



# TUESDAY, 28 MAY • 6 PM

# Independence Cinema



Independence Cinema • 634-3140  
[BealeFSS.com/BealeMovieTeather](http://BealeFSS.com/BealeMovieTeather)  
[facebook.com/independence-cinema](http://facebook.com/independence-cinema)



# FSS QUICK GLANCE FOOD GUIDE



**Serving Lunch & Dinner**

*Wednesday–Sunday, 11am–7pm*

Burgers • Sandwiches • Kids Meals • Milkshakes • Beverages



**Serving Breakfast, Lunch & Dinner**

*Monday–Thursday, 7am–2pm, 5–8pm / Friday, 12–7pm*

Breakfast Items • Burgers • Sandwiches • Pizza • Beverages



**Serving Lunch**

*Wednesday–Friday, 11am–1pm*

Steak Sandwiches - Wednesday

Bratwurst - Wednesday - Friday



**DRAGON'S LAIR**

FLIGHTLINE KIOSK

**Breakfast, Lunch, Dinner and Simply-to-Go**

*See current hours of operation on page 23.*



**CONTRAILS**

**Breakfast, Lunch & Dinner**

*See current hours of operation on page 23.*

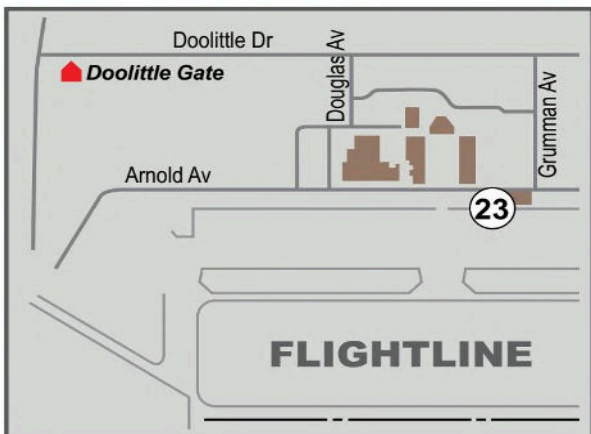
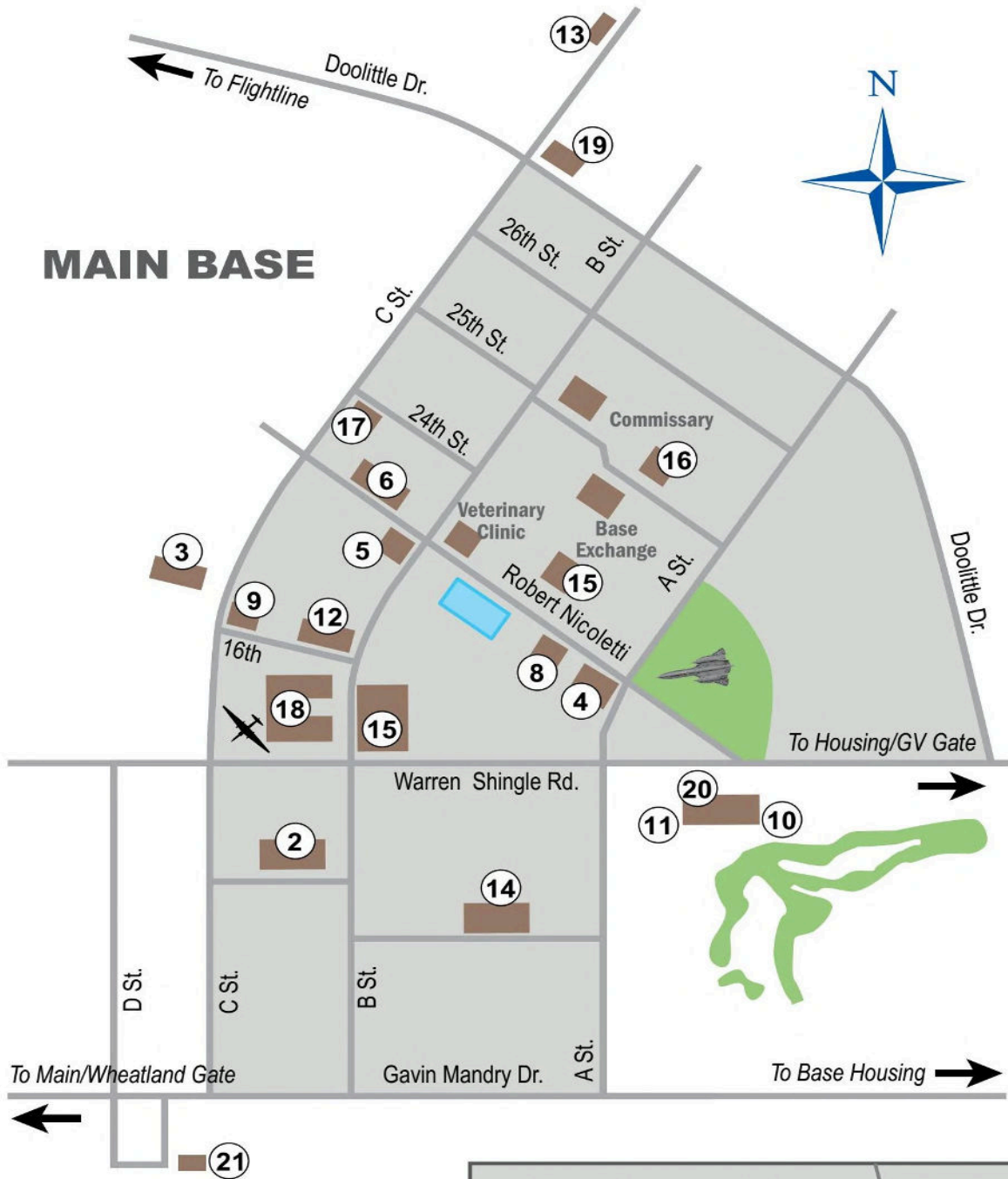
Entree Specials • Soups & Salads • Pizza • Healthy Choices • Grab & Go

**Hours of operation and food choices subject to change.**

# 9 FSS HOURS OF OPERATION

- Aero Club** 530-749-7696  
Yuba County Airport, Olivehurst  
9am-4pm M-Th  
Aero Club Members 24/7  
Closed holidays
- 3 Airman Leadership School** 634-3332  
2401 C Street  
7:30am-4:30pm M-F  
Closed weekends/holidays/fam days
- 4 Arts & Crafts Center** 634-2294  
17651 Warren Shingle Road  
9am-4pm Tu-F  
Closed weekends/holidays
- 4 Auto Hobby Center** 634-2296  
17651 Warren Shingle Road  
7am-6pm M-F  
9am-3pm (no mechanic) Sat  
Closed Sundays/holidays
- 5 Beale Lanes** 634-2299  
17800 Robert Nicoletti Way  
12-8pm M-F  
12-9pm Sat  
12-4pm Sun  
Closed holidays/fam days
- 6 Child Development Center** 634-4717  
18000 Robert Nicoletti Way  
6:30am-5:30pm M-F  
Closed weekends/holidays/fam. days
- 7 Child & Youth Resource** 634-4418  
5190 Camp Beale Hwy, Bldg. 3308  
9am-3pm M-F  
Closed weekends/holidays/fam days
- 8 Community Center** 634-3140  
17700 Robert Nicoletti Way  
7:30am-5pm M-F  
Closed weekends/holidays/fam days
- 9 Contrails (DFAC)** 634-2537  
17853 16th Street  
Simply to Go: 5:30am-7pm M-F  
Simply to Go: 7:30am-6:30pm Wkd/hol/fam day  
Breakfast: 5:30-8am M-F  
Breakfast: 7:30-9am Wkd/hol/fam day  
Lunch: 10:30am-1:30pm Daily  
Dinner: 4:30-7pm M-F  
Dinner: 4:30-6:30pm Wkd/hol/fam day  
Midnt Meal: 10:30pm-12:30am Daily
- Bldg 1060, Flightline  
Simply to Go: 6am-8pm M-F  
Breakfast: 6-8am M-F  
Lunch: 10:30am-1:30pm M-F  
Dinner: 4:30-7pm M-F
- 12 Education Center** 634-2525  
17849 16th Street  
8am-3pm M-F  
Closed weekends/holidays/family days
- 13 Fam Camp** 634-3382  
220 Cedar Lane  
9am-4pm M-F  
9am-12pm Sat  
(Contact Camp Host) Sat, Sun, Hol
- 7 Family Child Care** 634-4418  
5190 Camp Beale Hwy, Bldg. 3308  
By appt. M-F
- 15 Fitness Center/Omni** 634-2258  
2418 B Street  
5am-8pm M-F  
8am-5pm Wkd/hol/fam days
- 14 Gold Country Inn** 634-2953  
24112 A Street  
Open 24/7
- 12 Hub Zemke Library** 634-2314  
17849 16th Street  
8am-6pm M-Th  
8am-4pm F  
9am-2pm Sat  
Closed Sundays/holiday/fam. days
- 16 Independence Cinema** 634-3140  
25th Street, Bldg. # 2474  
(Doors open 30 min. prior) 7pm Sat
- 8 Information, Tickets, Tours** 634-4882  
17700 Robert Nicoletti Way  
11am-5pm M-F  
Closed wknds/holidays/fam. days
- 2 Military & Family Readiness** 634-2863  
17800 B Street  
7:30am-4:30pm M,T,Th,F  
7:30am-1:30pm W  
Closed weekends/holidays/fam. days
- 18 Military Personnel** 634-4200  
17852 16th Street  
7:30am-3:30pm M-F  
Closed weekends/holidays/fam. days
- 11 Moos & Brews** 634-0936  
17440 Warren Shingle Road  
11am-7pm W-Sun  
Closed holidays
- 18 NAF Human Resources** 634-2240  
17852 16th Street  
7:30am-4pm M-F  
7:30am-2pm Last Th of month  
Closed weekends/holidays/fam. days
- 17 9 FSS Marketing Office** 634-2275  
6249 C Street  
7am-4pm M-F  
Closed weekends/holidays/fam. days
- 19 Outdoor Adventure Center** 634-2054  
17630 Doolittle Drive  
9am-5pm M-F  
9am-1pm Sat/Fam Days  
Closed Sundays/holidays
- 20 Recce Point Club** 634-2833  
17440 Warren Shingle Road  
Office hours: 7:30am-4:30pm M-F  
Closed weekends/holidays/fam. days
- 21 Rod & Gun Club** 788-2473  
7950 D Street  
9am-4pm W-Sun  
9am-1pm Fam Days  
Closed holidays
- 5 Spare Time Grill** 634-2304  
17800 Robert Nicoletti Way  
7am-2pm / 5-8pm M-F  
Closed weekends/holidays/fam. days
- 10 Venture Park** 788-0192  
17440 Warren Shingle Road  
11am-6pm W-Sun  
Closed holidays
- 22 Youth Programs** 634-4953  
15160 Gavin Mandry Dr.  
6:15am-6pm M-F  
Closed weekends/holidays/fam. days

# 9 FSS FACILITY MAP





# MEMORIAL DAY HOURS OF OPERATIONS

	FRIDAY, MAY 24	SATURDAY, MAY 25	SUNDAY, MAY 26	MONDAY, MAY 27
AERO CLUB	CLOSED	CLOSED	CLOSED	CLOSED
ARTS & CRAFTS	CLOSED	CLOSED	CLOSED	CLOSED
AUTO HOBBY	CLOSED	CLOSED	CLOSED	CLOSED
BEALE LANES	12-9PM	12-9PM	CLOSED	CLOSED
CDC/C6YRC	CLOSED	CLOSED	CLOSED	CLOSED
COMMUNITY CENTER	CLOSED	CLOSED	CLOSED	CLOSED
CONTRAILS				
- SIMPLY TO GO	7:30AM-6:30PM	7:30AM-6:30PM	7:30AM-6:30PM	7:30AM-6:30PM
- BREAKFAST	7:30-9AM	7:30-9AM	7:30-9AM	7:30-9AM
- LUNCH	10:30AM-1:30PM	10:30AM-1:30PM	10:30AM-1:30PM	10:30AM-1:30PM
- DINNER	4:30-6:30PM	4:30-6:30PM	4:30-6:30PM	4:30-6:30PM
- MIDNIGHT MEAL	10:30PM-12:30AM	10:30PM-12:30AM	10:30PM-12:30AM	10:30PM-12:30AM
DRAGON'S LAIR	CLOSED	CLOSED	CLOSED	CLOSED
EDUCATION CENTER	CLOSED	CLOSED	CLOSED	CLOSED
FAM CAMP	CONTACT CAMP HOST	CONTACT CAMP HOST	CONTACT CAMP HOST	CONTACT CAMP HOST
GOLD COUNTRY INN	24/7	24/7	24/7	24/7
HARRIS FITNESS CENTER	[24-HR ACCESS W/CARD]	8AM-5PM [24-HR ACCESS W/CARD]	8AM-5PM [24-HR ACCESS W/CARD]	[24-HR ACCESS W/CARD]
HUB ZEMKE LIBRARY	CLOSED	9AM-2PM	CLOSED	CLOSED
INDEPENDENCE CINEMA	CLOSED	CLOSED	CLOSED	CLOSED
INFORMATION, TICKET & TRAVEL	CLOSED	CLOSED	CLOSED	CLOSED
M6FRC	CLOSED	CLOSED	CLOSED	CLOSED
MPF	CLOSED	CLOSED	CLOSED	CLOSED
MOOS & BREWS	11AM-7PM	11AM-7PM	11AM-7PM	CLOSED
NAF HUMAN RESOURCES	CLOSED	CLOSED	CLOSED	CLOSED
OMNI FITNESS ANNEX	CLOSED	8AM-5PM	8AM-5PM	CLOSED
OUTDOOR ADVENTURE CENTER	9AM-1PM	9AM-1PM	CLOSED	CLOSED
RECCE POINT CLUB	CLOSED	CLOSED	CLOSED	CLOSED
ROD & GUN	9AM-1PM	9AM-4PM	9AM-4PM	CLOSED
SPARE TIME GRILL	CLOSED	CLOSED	CLOSED	CLOSED
VENTURE PARK	11AM-4PM	11AM-6PM	11AM-6PM	CLOSED
YOUTH CENTER	CLOSED	CLOSED	CLOSED	CLOSED

**9 FSS Marketing  
6249 C Street  
Beale AFB, CA  
95903**

**FIRST CLASS  
PRESORTED  
POSTAGE & FEES PAID  
MARYSVILLE, CA  
PERMIT NO. 26**