

THE RECOE MAGAZINE



NOVEMBER 2023



**DINO-VEMBER
PHOTOS**

ALL MONTH!
page 7



November 3
page 4



TURKEY Trot

November 9
page 2



**TURKEY
AXE THROWING**

November 15-17
page 3



www.BealeFSS.com

Your guide to services and events provided by the 9th Force Support Squadron.



TURKEY TROT

5K FUN RUN

NOVEMBER 9 * 7:45am
START / FINISH BASE TRACK



Every finisher receives a Turkey pin to attach to their Recce Town Un-BEALE-ievable Race Series ribbon.

SCAN TO



SIGN UP

The run is an un-timed, fun run/walk for ALL AGES and fitness abilities. Take it slow or try to beat your best 5k run time!

SPONSORED BY

SULLIVAN

JOHN L. SULLIVAN
 CHRYSLER DODGE JEEP RAM

NO FEDERAL ENDORSEMENT
 OF SPONSORS INTENDED.



Harris Fitness Center • 634-2258

BealeFSS.com/HFC • facebook.com/HarrisFitnessCenter



FITNESS 6 SPORTS

TURKEY AXE THROWING



Come out to Venture Park and toss a few axes at turkey targets!

NOVEMBER 15-17 11AM-6PM

\$10 for 30 minutes, various targets to choose from.

Venture Park • 788-0192 • www.BealeFSS.com/VenturePark

VENTURE PARK / ROD & GUN

ROD-N-GUN CLUB'S ANNUAL TURKEY & HAM SHOOT

November 18 • 1-4pm

Top 3 competitors receive a turkey,
ham or pumpkin pies!

ENTRY FEE

\$20 per event or \$45 for all 3 events

Sign up by November 16

Bring your own
rifle, pistol,
revolver, or
rent one of ours!

Ammo available
for purchase.

Participants shoot at
TURKEY TARGETS
to Win Prizes!

SKEET

Most clays in 3 rounds.

RIFLE

Best 3 shots: 50, 75 & 100yds.

PISTOL

Best 3-shot grouping at
10, 15 & 25 yds.



Rod & Gun Club • 788-2473

BealeFSS.com/Rod-n-Gun • [facebook.com/BealeOAC](https://www.facebook.com/BealeOAC)



MONTE CARLO
BOWLING

KNOCK DOWN MULTI-COLORED PINS TO WIN CASH!
NOVEMBER 11 • 7PM

9-Pin No-Tap | Bowl 3 Games | Entry fee \$20 | Check-in opens at 6:30pm



GLOW BOWLING!
November 4, 18 & 25 • 6-9pm
\$15 Unlimited bowling, including shoes
or \$5.50 per game plus \$3.25 shoe rental.

Holiday Hours: Open Veterans Day, 12-9pm • Closed Thanksgiving Day
Due to leagues or special events, open lanes may be limited. Call for the best times to bowl.

Beale Lanes Bowling • 634-2299
facebook.com/BealeLanes • bealefss.com/beale-lanes

BEALE LANE FISHING CHARTER **FSS** BOWLING



COWABUNGA
COCKTAILS
Cocktails

**COWABUNGA
COCKTAILS
IS HEADED
YOUR WAY!**

Recce Point Club will have an adult beverage cart driving through base housing selling specialty cocktails and other adult beverages.

Meet us at the stop closest to your house!
Find the route map on Facebook.com/ReccePointClub.
Friday, November 3, starting at 5:15pm.

<p><i>Non-Alcoholic</i></p> <p>Kid's Punch \$2</p> <p>Cash only! IDs required.</p>	 <p>Fall Treat \$2</p>	<p><i>Alcoholic Beverages</i></p> <p>COWabunga Cocktail, \$5</p> <p>MOOgarita \$5</p> <p>Jack & Coke \$5</p> <p>Beer or Wine \$3</p>
--	---	--

Moos & Brews • 634-0936
www.BealeFSS.com/Moos-Brews • www.Facebook.com/BealeMoosAndBrews



NOVEMBER 2023

SEE WHAT'S INSIDE

Turkey Trot 5k Run	2	November Events Calendar	12-13
Venture Park / Rod & Gun Club	3	Aero Club / Print Shop	14
Beale Lanes / COWabunga	4	Youth Center	15
Auto Hobby / Arts & Crafts	6	ICE comments	16
Library	7	FCC / Child Development Center	17
Outdoor Adventure Center / ITT	8	M&FRC / EFMP	19
Community Center	9	9 FSS Food Guide	20
Theater / AF Photo Contest	10	FSS Hours & Directory	22
Fitness Center / NAF HRO	11	FSS Map	23



9TH FORCE SUPPORT SQUADRON

Lt Col Melissa Day
Commander

Elizabeth Grabill
Deputy Director

MARKETING STAFF

Cathy Rodgers
Marketing Director

Amy Weaver
Commercial Sponsorship

Ricky Villegas
Visual Information, Digital Media

Tom Tennies
Visual Information, Print

The **RECCE MAGAZINE** is published monthly by the Beale AFB 9th Force Support Marketing Department. Contents of the RECCE Magazine are not necessarily the official views of, or endorsed by, the U.S. Government, the DoD, or the Department of the Air Force. The appearance of advertising in this publication does not constitute endorsement by the federal government.

ALL PROGRAMS, DATES AND TIMES ARE SUBJECT TO CHANGE WITHOUT NOTICE.

For information regarding advertising in the Recce Magazine or to sponsor a program or event contact:

9th Force Support Marketing Office
6249 C Street, Beale AFB, CA 95903
530.634.5407/634.2283



www.BealeFSS.com



www.facebook.com/Beale9FSS



www.instagram.com/Beale9FSS



RAY'S FAMILY BAYS

AUTOMOTIVE COURSE II: TIRE CHANGE & BRAKE PADS

BEALE AIR FORCE BASE
AUTO HOBBY

NOVEMBER 16, 3-4PM

Don't get caught with a flat during the holidays! We'll teach your family how to check fluids, change tires, verify your emergency kit, and check brake pads.

Space is limited. \$65 covers instruction, bay and tool use, parts sold separately. Payment is required for reservation. Make your reservation by November 13.

Auto Hobby Center • 634-2296

www.BealeFSS.com/Auto-Hobby-Center • www.Facebook.com/BealeAutoHobby



Learn to Sew

November 15 • 10am-12pm

Learn how to use a sewing machine and walk away with a creative bowl cozy and a great new skill!

\$25 covers instruction and machine use, sign up by November 10.



ARTS & CRAFTS

Hammer & Nails Kids Class

November 21 • 2-3pm

Make a whimsical owl from recycled objects.

\$8 covers all supplies, sign up by November 17 (max 10 participants).

Arts & Crafts • 634-2294

www.BealeFSS.com/Arts-Crafts-Center • www.Facebook.com/BealeArtsAndCrafts



DINO-VEMBER

@ Hub Zemke Library

T-Rex Selfie Station

All month

T-Rex photo prop available for selfies.

Monthly Craft Bag

All month

Pick up a craft bag containing activity booklets with fossil/build-a-dino crafts (*while supplies last*).

The Dino Claw Machine

November 11

Each child gets three chances at *The Claw* for treats.

Story Time

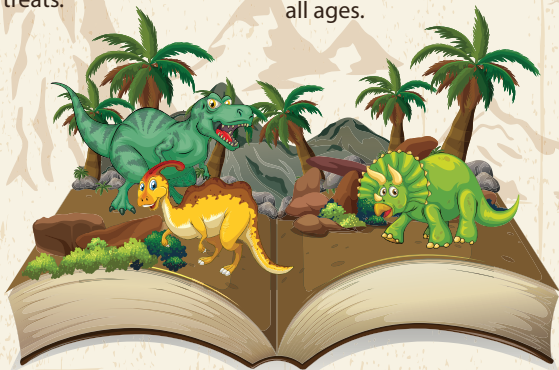
November 16, 10:30am & 4:30pm

Preschoolers can take home a special hungry dinosaur craft after reading "*How Do Dinosaurs Eat Their Food?*".

Dino Egg Hunt

November 17

Find the egg and take home a miniature dinosaur of your choice, for all ages.



National Geographic: People, Animals, and the World includes interactive maps, fun to learn animal facts, and stories about the people who shape the world. **National Geographic Magazine** is an American monthly magazine published by the National Geographic Society best known for photojournalism. **National Geographic Archive:** 1888-1994 brings together a complete archive of **National Geographic Magazine** along with a cross-searchable collection of **National Geographic** books, maps, images and videos. **National Geographic Kids** provides interactive science and archaeology learning resources for educators and children.

Hub Zemke Library • 634-2314

BealeFSS.com/Hub-Zemke-Library • facebook.com/HubZemkeLibrary

AWESOME ITT TRIPS FOR NOVEMBER!



Disney On Ice,
Sacramento

November 4
9am-4pm

Our shuttle takes you to see Disney On Ice, live in Sacramento! With dazzling songs and performances, it's sure to be a fun event!

\$40 each (trans. & ticket)
Sign up by Nov. 1

Upcoming December Trips

**Monterey Bay Aquarium
and Whale Watching**
December 2-3
**Ice Skating and
South Lake Tahoe Day**
December 30

PLUS DISCOUNTED TICKETS
AVAILABLE THROUGH ITT

**Universal Studios:
Hollywood,
Disneyland, and
Disney's Armed Services
Salute Ticket Program**
AND OTHER
GREAT TICKET DEALS!



Information, Tickets & Travel • 634-4882

BealeFSS.com/Information-Tickets-Travel • facebook.com/BealeITT



Crocker Museum
& Old Town Sac

November 25
9am-8pm

Join us for a day at the
Crocker Art Museum and
Old Town Sacramento.
\$20 / \$15 6-17 / under 5 free
Sign up by Nov. 22

GET OUT AND EXPLORE!

Point Reyes Seashore

We will travel to the Point Reyes National Seashore. Walk the beach and see wildlife in its natural habitat. We'll stop for dinner.

November 11 • 9am-7pm
\$35 (trans. only) Sign up by Nov. 7.

Empire Mine State Park

Explore this once-thriving gold mine and learn about the rich mining history of the Sierra Nevada Gold Rush.

November 18 • 9am-2pm
\$20 (trans., adm.) Sign up by Nov. 14.



SKI SHOP OPENING SPECIAL!

Stop by November 1-7

GET 20% OFF

Season Ski/Snowboard Rental



Outdoor Adventure Center • 634-2054
BealeFSS.com/OAC • facebook.com/BealeOAC



CELEBRATE THIS SPECIAL DAY!

Día de los Muertos

November 18 • 4-8pm • Community Center

**FLOWER CRAFTS • PINATA • FACE PAINTING
BOUNCY HOUSES • OFRENDA TABLE
SKULL DECORATING CONTEST
SHOWING COCO AT 6PM
ENJOY A SPECIAL MEXICAN DINNER**

**\$15 Adults / \$8.50 Kids (5-12 years)
4 and under free**

BRING A PICTURE OF YOUR LOVED ONE THAT HAS PASSED THAT YOU WOULD LIKE TO HONOR.

Community Center • 634-3140
BealeFSS.com/CAC • facebook.com/BealeCAC

BEALE AND FOREST DISTRICT
FSS

COMMUNITY CENTER

BOUNCE HOUSE EXTRAVAGANZA!

NOVEMBER 20-22 • 12-7:30PM

3 days of fun for the whole family!

- > **BOUNCY HOUSES**
- > **ARTS & CRAFTS**
- > **BOARD GAMES**
- > **CONCESSIONS**
(available for purchase)
- **Cost \$5 per child**
(4 & under-free)

Community Center • 634-3140
BealeFSS.com/CAC • facebook.com/BealeCAC

BEALE AND FOREST DISTRICT
FSS

COMMUNITY CENTER

COMMUNITY CENTER

MOVIE NIGHT

INDEPENDENCE CINEMA

Doors open at 6:30pm • **SHOWTIME** at 7pm



November 4



The Little Mermaid
(Rated G)

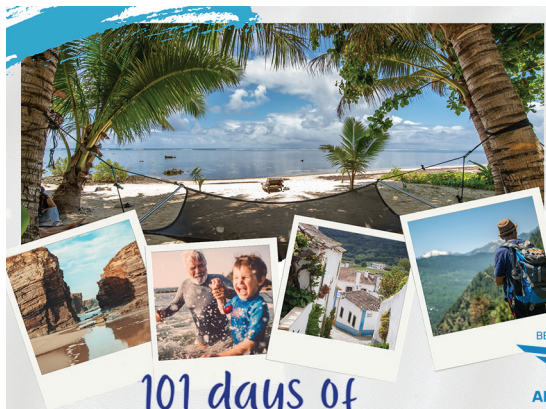
November 25



Elemental
(Rated G)

CLOSED NOVEMBER 11 FOR VETERANS DAY

Independence Cinema • 634-3140
www.BealeFSS.com/Independence-Cinema



101 days of

Summer

2023 AIR FORCE PHOTO CONTEST

TAKE PHOTOS OF
YOUR SUMMER.
WIN PRIZES.
SUBMIT ENTRIES
SEP 15 - NOV 15.



[FORCESUPPORT.AWARDS
PLATFORM.COM](https://FORCESUPPORT.AWARDSPLATFORM.COM)



UNITED STATES AIR FORCE
PHOTO
CONTEST



GROUP FITNESS FOR EVERYONE! AT THE OMNI

Shape Up! **Mondays, 12-1pm**
 This total-body workout combines the elements of cardio, body awareness, muscle conditioning and flexibility in this, fun high- energy, totally cardio workout! Turn up the beat!

Freestyle Spin w/Core Kicker **Tuesdays, 5:30-6:30am**
Freestyle Spin w/Core Kicker **Wednesdays, 12:30-1:30pm**
 A cardio spin class that gets you sweating with interval sprints, flat roads and hill climbs followed by a core workout using a variety of exercises like planks, sit-ups and more!

Body Blast **Thursdays, 5:30-6:30am**
 This intense workout will really get your heart pumping. You're off to the races with cardio riding formulated to increase your endurance, power and speed.

Note: Classes and instructors subject to change without notice.



Omni Fitness Center • 634-2258
 BealeFSS.com/HFC • facebook.com/HarrisFitnessCenter **FITNESS & SPORTS**



Become a Federal Employee at Beale AFB

Join the TEAM!



CREATE YOUR PROFILE & APPLY ONLINE

@ USA JOBS.GOV

SCAN THE QR CODE WITH YOUR PHONE TO GO DIRECTLY TO OPEN POSITIONS AT BEALE AFB. For assistance, email 9FSS.FSMH@us.af.mil



An Equal Opportunity Employer
NON-APPROPRIATED FUND (NAF) JOBS
 Regular & Flex Positions

Benefits*:
 Promotion Opportunities
 Health, Dental & Life Insurance
 Awards • 401 (k) Savings Plan
 Holiday & Overtime Pay
 Shift Differential & Sunday Premium
 Night Pay Differential
 Worker's/Unemployment Compensation
 Military Leave • Administrative Leave
 Annual & Sick Leave
 Court Leave • Maternity Leave
 Family & Medical Leave Act (FMLA)
 Leave for Adoption
 * Not all benefits available to all positions

NAF Human Resources • 634-2240

www.BealeFSS.com/NAF • www.facebook.com/Beale9FSS

BE ON THE LOOKOUT FOR GREAT THINGS
HAPPENING LEADING UP TO SANTA'S
VERY IMPORTANT DAY!

Days of
CHEER
is coming your way!

DECEMBER 11-24, 2023

12

SUNDAY

MONDAY

TUESDAY



DINO-vement Photos
All Month!
(see page 7)

5

6

7

**Car Buying
Workshop**
(see page 19)

12

14

15



Turkey Axe Throwing
Nov 15-17
(see page 3)

9RW Family Day

19

20

21



**Bounce House
Extravaganza**
Nov 20-22
(see page 9)

Youth Movie Trip
(see page 15)
**Hammer & Nails
Kid's Class**
(see page 6)

26

27

28

WEDNESDAY	THURSDAY	FRIDAY	SATURDAY
 <p>1 Ski Shop Opening Special Nov 1-7 <i>(see page 8)</i></p>	<p>2 Ditching the Dorms <i>(see page 19)</i></p>	<p>3 Tween Night Out <i>(see page 15)</i> COWAbunga Cocktails <i>(see page 4)</i></p>	<p>4 Movie Night <i>(see page 10)</i> Glow Bowling <i>(see page 4)</i> Disney on Ice <i>(see page 8)</i></p>
<p>8</p>	<p>9 Smooth Move <i>(see page 19)</i> Turkey Trot 5k <i>(see page 2)</i></p>	<p>10 Veterans Day Observed</p>	<p>11 Dino Claw <i>(see page 7)</i> Point Reyes Trip <i>(see page 8)</i> Monte Carlo Night <i>(see page 4)</i></p>
<p>15 Boots to Business <i>(see page 19)</i> Sewing Class <i>(see page 6)</i></p>	<p>16 10 Steps to Federal Employment <i>(see page 19)</i> Story Time <i>(see page 7)</i> Family Auto Course <i>(see page 6)</i></p>	<p>17 Dino Egg Hunt <i>(see page 7)</i> Teen Mall Trip <i>(see page 15)</i></p>	<p>18 Turkey/Ham Shoot <i>(see page 3)</i> Empire Mine Trip <i>(see page 8)</i> Dia de los Muertos <i>(see page 9)</i></p>
<p>22</p>	<p>23 </p>	<p>24 ACC Family Day</p>	<p>25 Glow Bowling <i>(see page 4)</i> Movie Night <i>(see page 10)</i> Museum/ Old Town Sac Trip <i>(see page 8)</i></p>
<p>29</p>	<p>30</p>	 <p>Follow 9 FSS on Facebook www.facebook/Beale9FSS</p> <p>For details and updates on any of the events in the Recce Magazine please log on to the Current Events page on our website at www.bealefss.com</p>	



**CIVILIANS, DoD EMPLOYEES,
AND MILITARY MEMBERS!**

COME FLY WITH US!

Take that first step to becoming a pilot with an **Introductory Flight** from **YOUR Beale Aero Club**. You will be given hands-on experience and shown the basics of flight. Get started now and call 530-749-7696 to schedule your Introductory Flight today!

\$150 Includes approximately one hour flight time, as well as ground time with instructor.

**THE BEALE AERO CLUB FLIGHT TRAINING CENTER OFFERS
Private Pilot Ground School and Specialty Flight Training.**

The office and fleet location are at the Yuba County Airport, 1364 Sky Harbor Dr., Olivehurst, CA.

Aero Club • 530-749-7696

www.BealeFSS.com/Aero-Club • www.facebook.com/BealeAeroClub

9 FSS MARKETING IS YOUR ON-BASE COPY, PRINT & DESIGN CENTER



SCAN THIS QR CODE
FOR CURRENT PRICES.

SERVICES OFFERED

- BLACK & WHITE & COLOR COPIES
- BUSINESS CARDS
- BROCHURES, MANUALS & PROGRAMS
- POSTERS & BANNERS
- LAMINATING
- CUTTING, FOLDING & BINDERY

DESIGN SERVICES

- PROFESSIONAL, EXPERIENCED GRAPHIC DESIGNERS

9 FSS MARKETING OFFICE

LOCATED IN THE 9 FSS SQUADRON HEADQUARTERS BLDG.
6249 C STREET, BLDG 2440, BETWEEN THE CHAPEL & SECURITY FORCES

530-634-5407 • 9FSS.FSK@US.AF.MIL • WWW.BEALEFSS.COM/PRINTSHOP

BACK to the 90's AND 2000's

Tween Night Out!

November 3 • 6-9pm

Break out those rad clothes and join the party as we throwback to the 90s and 2000s era! Show off your dance moves, sing to the jams of N'Sync, Britney Spears, Spice Girls, and rock out to Guitar Hero! Ages 9-12.
\$20/YC members 20% off • Sign up by Nov. 1

TEEN MALL NIGHT!

BOWLING & AMUSEMENT ROUND 1

ULTIMATE GAMING CENTER

November 17 • 4-8pm

Teens enjoy a night at **Round 1** at the Roseville Galleria's bowling and arcade center! Afterwards, teens can explore the mall at their leisure.
\$25/YC members 20% off.
 Includes transportation, 1 hour arcade game time, plus dinner at Round 1.

THE MARVELS

YOUTH MOVIE TRIP

November 21 • Time: TBD

We will head to Roseville to watch this unlikely trio team up and learn to work in concert to save the universe as "The Marvels."
\$10/YC members 20% off. Sign up by Nov. 14
 Ages 9-18. Bring money for snacks.

Youth Center • 634-4953
 BealeFSS.com/Youth-Center • facebook.com/BealeChildandYouthPrograms

YOUTH CENTER



Drs. Insiya & Raj Zanzi

"A Healthy Smile is A Beautiful Smile!"
 We Welcome Beale AFB Families



- **WE ACCEPT MILITARY INSURANCE** •
- Evening & Saturday Appointments Available
- New Patients & Emergencies Welcome
- Flexible Payment Plans
- Crowns, Root Canals, Implants, Veneers and Dentures
- Digital X-rays, IntraOral Camera, Massage Chairs, and NETFLIX
- Braces & INVISALIGN for adults & kids



Gentle Family & Cosmetic Care
Raj Zanzi, DMD • Insiya Zanzi, DDS
Allen Sanders, DDS (Orthodontics)



916-797-0825

1424 Blue Oaks Blvd.,
Roseville (Hwy 65 & Blue Oaks exit)

\$50 CREDIT

Towards Dental Work
 (Excluding exam, x-rays, cleaning & deductible)*
New patients only, one per family
 *Not valid with any other offer.
 Expires: November 30, 2023

www.12BridgesDental.com

Paid Ad. No Federal Endorsement of Advertisers Intended.

PARTNERING WITH
BEALE AFB TO
POWER A BRIGHTER
FUTURE FOR
YUBA COUNTY



yubawater.org

f t i @ v in @YubaWater

Paid ad. No federal endorsement
of sponsors intended.



TELL US WHAT YOU THINK.
We want your feedback!

Excellent

Very Good

Good

Average

Poor

Scan this code to submit a
comment card after your visit
to one of our FSS facilities.

ICE
INTERACTIVE CUSTOMER EVALUATION



Your feedback is important to us!
Your comments, good or bad, help us improve our
facilities or let us know we're doing it right!



FAMILY CHILD CARE

Become an FCC Provider

Manage your own business • Set your own hours

Free training • Transferable career

Great Government subsidies:

▶▶ Initial Certification or Renewal - **\$300**

▶▶ FCC Provider Transfer - **\$1,000**

▶▶ Providers own child - **\$75-100/week**

▶▶ Provider receives weekly USAF subsidy - **\$305/child**

(Some restrictions apply)

Family Child Care • 634-4418

www.BealeFSS.com/family-child • 9FSS/FSFF@us.af.mil

The Beale Child Development Center is looking for Early Childhood Professionals, entry through leadership levels!

OPPORTUNITIES FOR:

Great Starting Wages • Good Benefits

Guaranteed 20 Hours per Week

Accredited Education and Training

Military Spouse Preference

Plus, 100% free child care for 1st child and 25% off additional child after Multiple Child Discount.

HOW TO APPLY

Log on to www.usajobs.gov and create an account.

Search KEYWORD: **Child and Youth Program Assistants**

Enter LOCATION: **Beale AFB**

Follow direction to apply and wait for a response.

FOR ASSISTANCE

Email: 9FSS.FSMH@us.af.mil or NAF Human Resources at 530-634-2240

Child Development Center • 634-4717

www.BealeFSS.com/CDC • www.facebook.com/BealeYouthPrograms

FAMILY CHILD CARE / CHILD DEVELOPMENT CENTER



NOVEMBER

SACRAMENTO
AT FIRE MOUNTAIN



SCAN THE QR CODE
FOR MORE INFO

MONDAY - WEDNESDAY
1PM 3PM 5PM & 7PM
THURSDAYS
1PM & 5PM
**GAMES PAY UP
TO \$1,199**

JOIN US ON NOVEMBER 2

DIA DE LOS MUERTOS
Session Madness

1PM: 8 REGULAR GAMES PAY UP TO \$1,000
5PM: 15 REGULAR GAMES PAY UP TO \$1,199



MONDAYS

**DAY OF THE
ROCKER**

WEAR YOUR FAVORITE
HARD ROCK MEMORABILIA AND
GET 5 FREE PACKS

TUESDAYS

**DAY OF THE
BOGO**

BUY ANY MACHINE OR GAMES
FOR YOUR MACHINE AND GET
ONE FREE

WEDNESDAYS

**DAY OF
THE
MACHINE**

BUY 5, GET 5

THURSDAYS

**Session
Madness**

1:00PM: 8 REGULAR GAMES
PAY UP TO \$1,000
5:00PM: 15 REGULAR GAMES
PAY UP TO \$1,199

RIGHT ANGLE
PRODUCTIONS

**WHEEL OF
FORTUNE**

LIVE!

WHEEL OF FORTUNE

AMERICA'S GAME®
COMES TO SACRAMENTO!
THE STAGE SHOW GIVES LUCKY
FANS A CHANCE TO SPIN AND WIN!



HOSTED BY
BOB GOEN

DECEMBER 3
HARD ROCK LIVE

TICKETS ON SALE NOW AT TICKETMASTER.COM

WHEELOFFORTUNELIVE.COM

SCAN TO
PURCHASE
TICKETS



NO PURCHASE NECESSARY. US & Canada legal residents (excl. PR, & Dombod, 19-
Full rules, incl. all entry method, call/visit the box office. © 2023 Caflon Productions, Inc.

PAID AD. NO FEDERAL ENDORSEMENTS OF SPONSORS INTENDED

M&FRC Classes and Workshops

Classes are held at the M&FRC. Call 634-2863 to register and receive your Zoom invitation.

Ditching the Dorms

NOVEMBER 2

In-person: 9–10:30am

Virtual: 7–8:30pm

This class provides important information & resources to Airmen preparing to move out of the dorms.

Car Buying Workshop

NOVEMBER 6

In-person: 9–10am

Virtual: 7–8pm

Valuable information for those looking to purchase a new or used vehicle.

Smooth Move

NOVEMBER 9 • 2:30–4pm

Out-processing workshop to learn about preparing for upcoming PCS move.

5 Steps to Professional Employment

NOVEMBER 9 • 9–11am

Learn the process of finding, applying, and obtaining employment in the off-base civilian sector.

Boots to Business

NOVEMBER 15–16 • 8am–4pm

This 2-day workshop is geared towards business plan development, franchising and legal issues.

10 Steps to Federal Employment

NOVEMBER 16 • 9–11am

Learn the process of finding, applying, and obtaining federal employment.

Military & Family Readiness Center • 634-2863

BealeFSS.com/MFRC • facebook.com/BealeMilitaryFamilyReadiness

EFMP & RESPITE CARE PROGRAM

Receive 40 hours per month of free child care for military families with a disabled child.



If your child has a disability, your family may qualify to be Q-Coded and registered with the EFMP program with the Air Force.

If you are verified as an EFMP family, you can qualify for Respite Care for the child with a disability, and for all the siblings as well. The hours and the respite care providers are scheduled monthly through the FCC Coordinator.

Contact the FCC Coordinator at (530) 812-3117 or bealefcc@gmail.com



To learn more about the EFMP Program, please contact **Kim Hogue** at kimberly.hogue.1@us.af.mil or the EFMP Medical Specialist,

Melissa Gardner at melissa.gardner.ctr@us.af.mil.

FSS QUICK GLANCE FOOD GUIDE



Serving Lunch & Dinner

Wednesday–Sunday, 11am–7pm

Burgers • Sandwiches • Kids Meals • Milkshakes • Beverages



Serving Breakfast, Lunch & Dinner

Monday–Thursday, 7am–2pm, 5–8pm / Friday, 12–7pm

Breakfast Items • Burgers • Sandwiches • Pizza • Beverages



Serving Lunch

Wednesday–Friday, 11am–1pm

Steak Sandwiches - Wednesday

Bratwurst - Wednesday - Friday



DRAGON'S LAIR

FLIGHTLINE KIOSK

Breakfast, Lunch, Dinner and Simply-to-Go

See current hours of operation on page 23.



CONTRAILS

Breakfast, Lunch & Dinner

See current hours of operation on page 23.

Entree Specials • Soups & Salads • Pizza • Healthy Choices • Grab & Go

Hours of operation and food choices subject to change.



JOHN L SULLIVAN
CHRYSLER DODGE JEEP RAM
POWERED BY LITHIA

Sell Us Your Vehicle!

Need cash? We need your car!

Free instant quote in minutes.

Trade-in for a New Jeep Wrangler
2-door Willys 4X4.

Come in Today! Shop Online!



\$500 MILITARY REBATE

towards the purchase or lease of a new vehicle



See dealer for details. Exclusively for active-duty military personnel, retired and veteran members, spouse/surviving spouse and other household members. Dealer must verify eligibility Offer expires 12/31/23.



SULLIVAN
JOHN L SULLIVAN
CHRYSLER DODGE JEEP RAM
POWERED BY LITHIA

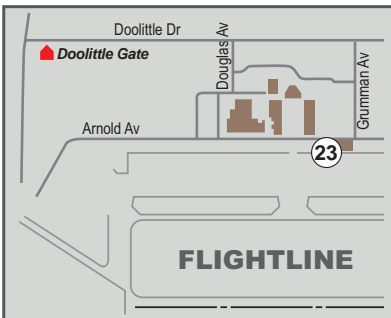
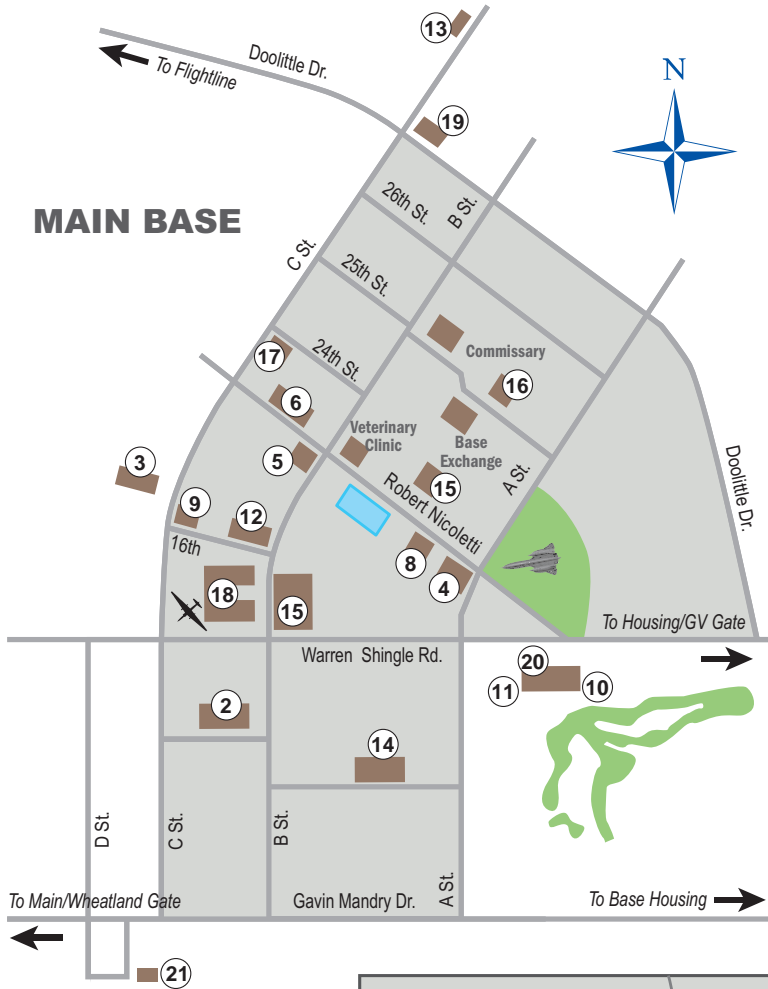
Visit Us Online at
Johnlsullivanandodgechrysler.com
950 Harter Pkwy, Yuba City, CA 95993
(855) 474-1650

9FSS HOURS OF OPERATION

- Aero Club** 530-749-7696
Yuba County Airport, Olivehurst
9am-4pm M-Th
Aero Club Members 24/7
Closed holidays
- 3 Airman Leadership School** 634-3332
2401 C Street
7:30am-4:30pm M-F
Closed weekends/holidays/fam. days
- 4 Arts & Crafts Center** 634-2294
17651 Warren Shingle Road
9am-4pm Tu-F
Closed weekends/holidays
- 4 Auto Hobby Center** 634-2296
17651 Warren Shingle Road
7am-6pm M-F
9am-3pm (no mechanic) Sat
Closed Sundays/holidays
- 5 Beale Lanes** 634-2299
17800 Robert Nicoletti Way
12-8pm M-F
12-9pm Sat
12-4pm Sun
Closed holidays/fam days
- 6 Child Development Center** 634-4717
18000 Robert Nicoletti Way
6:30am-5:30pm M-F
Closed weekends/holidays/fam days
- 7 Child & Youth Resource** 634-4418
5190 Camp Beale Hwy, Bldg. 3308
9am-3pm M-F
Closed weekends/holidays/fam days
- 8 Community Center** 634-3140
17700 Robert Nicoletti Way
12-8pm M-F
12-6pm Weekends
Closed holidays/family days
- 9 Contrails (DFAC)** 634-2537
17853 16th Street
Simply to Go: 5:30am-7pm M-F
Simply to Go: 7:30am-6:30pm Wkd/hol/fam day
Breakfast: 5:30-8am M-F
Breakfast: 7:30-9am Wkd/hol/fam day
Lunch: 10:30am-1:30pm Daily
Dinner: 4:30-7pm M-F
Dinner: 4:30-6:30pm Wkd/hol/fam day
Midnt Meal: 10:30pm-12:30am Daily
- 23 Dragon's Lair** 634-0896
Bldg 1060, Flightline
Simply to Go: 6am-8pm M-F
Breakfast: 6-8am M-F
Lunch: 10:30am-1:30pm M-F
Dinner: 4:30-7pm M-F
- 12 Education Center** 634-2525
17849 16th Street
8am-3pm M-F
Closed weekends/holidays/family days
- 13 Fam Camp** 634-3382
220 Cedar Lane
9am-4pm M-F
9am-12pm Sat
(Contact Camp Host) Sat, Sun, Hol
- 7 Family Child Care** 812-3117
5190 Camp Beale Hwy, Bldg. 3308
By appt. M-F
- 15 Fitness Center/Omni** 634-2258
2418 B Street
5am-10pm M-F
8am-5pm Wkd/hol/fam days
- 14 Gold Country Inn** 634-2953
24112 A Street
Open 24/7
- 12 Hub Zemke Library** 634-2314
17849 16th Street
8am-6pm M-Th
8am-4pm F
9am-2pm Sat
Closed Sundays/holiday/fam. days
- 16 Independence Cinema** 634-3140
25th Street, Bldg. # 2474
(Doors open 30 min. prior) 7pm Sat
- 8 Information, Tickets, Tours** 634-4882
17700 Robert Nicoletti Way
11am-5pm M-F
Closed wknds/holidays/fam. days
- 2 Military & Family Readiness** 634-2863
17800 B Street
7:30am-4:30pm M,T,Th,F
7:30am-1:30pm W
Closed weekends/holidays/fam. days
- 18 Military Personnel** 634-4200
17852 16th Street
7:30am-3:30pm M-F
Closed weekends/holidays/fam. days
- 11 Moos & Brews** 634-0936
17440 Warren Shingle Road
11am-7pm W-Sun
Closed holidays
- 18 NAF Human Resources** 634-2240
17852 16th Street
7am-4pm M-F
Closed weekends/holidays/fam. days
- 17 9 FSS Marketing Office** 634-2275
6249 C Street
7am-4pm M-F
Closed weekends/holidays/fam. days
- 19 Outdoor Adventure Center** 634-2054
17630 Doolittle Drive
9am-5pm M-F
9am-1pm Sat/Fam Days
Closed Sundays/holidays
- 20 Recce Point Club** 634-2833
17440 Warren Shingle Road
Office hours: 7:30am-4:30pm M-F
Closed weekends/holidays/fam. days
- 21 Rod & Gun Club** 788-2473
7950 D Street
9am-4pm W-Sun
9am-1pm Fam Days
Closed holidays
- 5 Spare Time Grill** 634-2304
17800 Robert Nicoletti Way
7am-2pm / 5-8pm M-F
Closed weekends/holidays/fam. days
- 10 Venture Park** 788-0192
17440 Warren Shingle Road
11am-6pm W-Sun
Closed holidays
- 22 Youth Programs** 634-4953
15160 Gavin Mandry Dr.
6:15am-6pm M-F
Closed weekends/holidays/fam. days

All 9 FSS Facilities are closed on weekends, holidays and/or ACC Family Days unless otherwise noted.
Hours of operation are subject to change without notice.

9FSS FACILITY MAP



9 FSS HOLIDAY HOURS

	Nov 10 Veterans Day <i>Observed</i>	Nov 11 Veterans Day	Nov 13 Family Day	Nov 23 Thanksgiving	Nov 24 Family Day
Aero Club	Closed	Closed	Closed	Closed	Closed
Arts & Crafts	Closed	Closed	Closed	Closed	Closed
Auto Hobby	Closed	Closed	Closed	Closed	Closed
Beale Lanes	12-5pm	12-9pm	12-8pm	Closed	12-5pm
CDC/FCC/CYP	Closed	Closed	Closed	Closed	Closed
Community Ctr	Closed	Closed	Closed	Closed	Closed
Contraills					
• <i>Simply to Go</i>	7:30am-6:30pm	7:30am-6:30pm	7:30am-6:30pm	7:30am-6:30pm	7:30am-6:30pm
• <i>Breakfast</i>	7:30-9am	7:30-9am	7:30-9am	7:30-9am	7:30-9am
• <i>Lunch</i>	10:30am-1:30pm	10:30am-1:30pm	10:30am-1:30pm	10:30am-1:30pm	10:30am-1:30pm
• <i>Dinner</i>	4:30-6:30pm	4:30-6:30pm	4:30-6:30pm	4:30-6:30pm	4:30-6:30pm
• <i>Midnight Meal</i>	10:30pm-12:30am	10:30pm-12:30am	10:30pm-12:30am	10:30pm-12:30am	10:30pm-12:30am
Dragon's Lair	Closed	Closed	Closed	Closed	Closed
Education Ctr	Closed	Closed	Closed	Closed	Closed
Fam Camp	Closed	Closed	9am-4pm	Closed	9am-1pm
Harris Fitness Ctr	24-hr access	24-hr access	24-hr access	24-hr access	24-hr access
Library	Closed	Closed	Closed	Closed	Closed
Lodging	24-hr access	24-hr access	24-hr access	24-hr access	24-hr access
M&FRC	Closed	Closed	Closed	Closed	Closed
Moos & Brews	Closed	Closed	Closed	Closed	Closed
ITT	Closed	Closed	Closed	Closed	Closed
OAC	Closed	Closed	9am-1pm	Closed	9am-1pm
Official Mail	Closed	Closed	7am-12pm	Closed	7am-12pm
Recce Point Club	Closed	Closed	Closed	Closed	Closed
Rod & Gun	Closed	Closed	Closed	Closed	9am-1pm
Sparetime Grill	Closed	Closed	Closed	Closed	Closed
Theater	Closed	Closed	Closed	Closed	Closed
Youth Center	Closed	Closed	Closed	Closed	Closed
Venture Park	Closed	Closed	Closed	Closed	Closed

9 FSS Marketing
6249 C Street
Beale AFB, CA 95903

FIRST CLASS
 PRESORTED
 POSTAGE & FEES PAID
 MARYSVILLE, CA
 PERMIT NO. 26