

*WELCOME TO COMMANDO INN  
HURLBURT FIELD, FLORIDA  
1st Special Operations Force Support Squadron*



The appearance of local business names does NOT imply federal endorsements.  
All information to include addresses and telephone numbers are subject to change.  
Please call the business to confirm their operation hours.

*Please do not remove this directory from your room.*





DEPARTMENT OF THE AIR FORCE  
1ST SPECIAL OPERATIONS WING (AFSOC)  
HURLBURT FIELD FLORIDA

8 March 2023

MEMORANDUM FOR TEAM HURLBURT FIELD PERSONNEL

FROM: 1 SOW/CC

SUBJECT: Off-Limits Restriction Announcement

1. In accordance with AFI 31-213/AR 190-2/OPNAVINST/COMDTINST1620.1D, the following establishments have been deemed off-limits to Armed Forces personnel and shall remain in effect until issuance of an updated notice:

<u>ESTABLISHMENT</u>	<u>REASON</u>	<u>EFFECTIVE DATE</u>
Vibe Night Club & Lounge 116 Perry Ave SE Fort Walton Beach FL 32548	Incidents of violence and drug usage	24 May 2022

2. All military personnel are prohibited from entering any establishment listed above or utilizing its services unless required by competent authority. Military personnel (whether in uniform or civilian attire) found entering, leaving or conducting business with any of these establishments may be subject to disciplinary actions under the Uniform Code of Military Justice. Additionally, personnel traveling on official orders to another military installation's area of responsibility need to contact that installation's Armed Forces Disciplinary Control Board or visit that installation's website to understand what entities are off limits to military personnel. Not all military bases have posted their off limits list to their website.

3. Widest dissemination of this information is directed to ensure awareness and compliance by all military personnel. Copies of this notice should be publicized through the base website, FTAC and Base Newcomer briefings, the Hurlburt Field Bulletin, and posted on bulletin boards and other high-traffic locations throughout the installation.

4. This memorandum supersedes the previous memorandum, same subject, dated 24 May 22.

BLACK.ALLISO  
N.K.1027594898  
ALLISON K. BLACK, Colonel, USAF  
Commander

Digitally signed by:  
BLACK.ALLISON.K.1027594898  
Date: 2023.03.13 18:44:16  
-05'00'



---

## **General Information**

- ❖ A Letter From The General Manager
- ❖ Air Force Inns Promise
- ❖ Safety & Security
- ❖ Bomb Threat
- ❖ Force Protection
- ❖ Hurricane & Tornado Information
- ❖ Beach Flag Warnings
- ❖ Wild Life
- ❖ Off-Limits Restriction Listing

## **Lodging Information**

- ❖ Guest Responsibilities
- ❖ Room Rates
- ❖ Service Fees
- ❖ Guest Services and Information
- ❖ Energy Conservation

## **Telephone Information**

- ❖ Telephone Dialing Instructions
- ❖ High Speed Internet Information
- ❖ Quick Reference

## **Base Facilities**

- ❖ Base Community Activities
- ❖ Base Chapel Information
- ❖ Laundry and Dry Cleaning Information
- ❖ Kennel Listing
- ❖ On and Off Base Hospital Information

## **Dining Information**

- ❖ On-Base Dining Establishments
- ❖ Off-Base Dining Establishments

---

## **Maps**

- ❖ FSS Map
- ❖ Building 90502
- ❖ Building 90918
- ❖ TLFs
- ❖ DVQs

## **Area Attractions**

- ❖ Area Attractions

## **TV/Radio Information**

- ❖ Television Services & Channel Guide
- ❖ Emerald Coast Radio Directory

## **Transportation**

- ❖ Base Taxi
- ❖ Commercial Taxi Services

## **Biographies**

- ❖ Hurlburt Field Biographies

---

## WELCOME LODGING GUESTS

Dear Valued Guest,

We are pleased you have chosen to stay at the Commando Inn on Hurlburt Field as our guest and we look forward to making your stay comfortable, safe and pleasant.

On behalf of the 1st Special Operations Wing commander, 1st Special Operations Mission Support Group commander, 1st Special Operations Force Support Squadron commander, and the lodging staff, we welcome you to Hurlburt Field and the Commando Inn. This directory has been created to assist you in discovering what Hurlburt Field and the surrounding areas have to offer. Any commercial establishments listed in the guide are provided to you only as a convenience and is not considered an endorsement.

We sincerely welcome your comments and recommendations to assist us in improving our service to you. You may do this by calling the reception center or by completing the Air Force Form 3211, Lodging Customer Comment Card, provided in your room. We strive for excellence and guest service is our number one priority. Please take a moment to let us know how we are doing.

If we can help in any way to make your visit more enjoyable, safe or comfortable, please call us. You can reach the manager on duty anytime by dialing "0" from your guest room phone. Our professional staff is ready and willing to assist you.

Sincerely,

*Donald C. Bell*

**DONALD C. BELL**

**Lodging Manager**





---

## **COMPLIMENTARY ITEMS AND AIR FORCE INNS PROMISE**

Welcome Valued Guest! We have provided you with a few complimentary items to get you through your first night's stay. Feel free to ask any Lodging team member if you need any of these items replenished. If you forgot to pack any other toiletry item, please come see us at the front desk. We should have what you need available for purchase.

### **The Air Force Inns Promise:**

“Our goal is to provide you a clean, comfortable room to guarantee a good night's rest and pleasant stay. If any part of your stay with us is not satisfactory, please provide the lodging manager or front desk staff an opportunity to make it right.”

### **Commando Inn Mission Statement**

Provide customer driven programs that invest in the resiliency of our force,  
family and relationships

### **Commando Inn Vision**

To become the best operation in providing excellence in lodging accommodations  
and customer service



---

## GENERAL INFORMATION

### SAFETY AND SECURITY

- ❖ In case of an emergency, dial 911.
- ❖ Please familiarize yourself with all fire exits.
- ❖ Do not store flammable liquids in your room.
- ❖ Only use cooking or heating devices provided in your room.
- ❖ Please make sure all hot appliances such as irons, coffee pots, etc. are turned off and unplugged after use. Open flame devices and hot plates are prohibited.
- ❖ Secure your room before you leave. Please do not leave the door open.
- ❖ Secure your room keys. Please report any lost keys immediately to the Front Desk. Our staff is not permitted to use their keys to let guests back into their rooms without proper identification.
- ❖ Keep all valuables out of sight or locked up at all times. There is a safe provided in your room for your convenience.
- ❖ When utilizing the laundry facility, please do not leave clothes unattended in the washers and dryers for a long period of time.
- ❖ Weapons and ammunition are prohibited. The address of the Armory is 521 Cody St., Bldg. # 90603, Hurlburt Field, Florida. From your room phone, dial 99-1-850-884-4047.

### BOMB THREAT

- ❖ If you receive a bomb threat, ask the individual where the bomb is located and the time it will go off.
- ❖ DO NOT HANG UP THE PHONE. The phone company will trace the call even after the caller hanged up.
- ❖ Use another phone to call 911 and notify them of the threat (time and target). Be sure to give them your name, location, and telephone number.
- ❖ Notify all occupants of the targeted building to evacuate immediately.
- ❖ Evacuate a minimum of 300 feet from the building.

---

## GENERAL INFORMATION (CONT.)

### FORCE PROTECTION CONDITIONS

- ❖ FORCE PROTECTION CONDITION ALPHA-Declared as a general warning of possible terrorist activity, and when circumstances do not justify full implementation of a higher force protection condition. This may be declared when incidents occur which could lead to possible terrorist incidents worldwide.
- ❖ FORCE PROTECTION CONDITION BRAVO-Declared when there is an increase and more predictable threat of terrorist activity, even though no particular target has been identified. This will be declared if information exists that terrorist elements are actively preparing for operations in the area of Nevada, California, or when SRO1, Increased Vigilance Posture, is implemented.
- ❖ FORCE PROTECTION CONDITION CHARLIE- Declared when an INCIDENT occurs or when intelligence is received that some form of terrorist action is imminent and DoD or US targeting is present. This will be implemented when SRO2, Advanced Readiness Posture, is implemented.
- ❖ FORCE PROTECTION CONDITION DELTA- Declared when a condition exists in the immediate area where a terrorist attack HAS OCCURRED or when intelligence is received that terrorist action against Hurlburt Field resources is likely.

---

## HURRICANE INFORMATION

### HURRICANE AWARENESS

Emergency Information...welcome to the Hurlburt Field hurricane information page! When a tropical storm or hurricane has its eye on the Emerald Coast, come here for the latest information. There are also several resources to help you before, during and after a storm hits. Remember that planning is vital to the safety of you and your family. Don't wait until the last minute when a storm is in the Gulf of Mexico to begin preparing.

The Atlantic Ocean hurricane season officially begins 01 June and continues until 30 November. August and September are the busiest months, both in number of tropical disturbances and intensity of storms. Hurricanes and tropical storms have been known to occur during all months of the year except February.

**Hurricane Watch:** An announcement that sustained winds of 64 knots (74 mph or 119 km/hr) or higher are possible within the specified area in association with a tropical, subtropical, or post-tropical cyclone. Because hurricane preparedness activities become difficult once winds reach tropical storm force, the hurricane watch is issued 48 hours in advance of the anticipated onset of tropical storm force winds.

**Hurricane Warning:** An announcement that sustained winds of 64 knots (74 mph or 119 km/hr) or higher are expected somewhere within the specified area in association with a tropical, subtropical, or post-tropical cyclone. Because hurricane preparedness activities become difficult once winds reach tropical storm force, the warning is issued 36 hours in advance of the anticipated onset of tropical-storm-force winds. The warning can remain in effect when dangerously high water or a combination of dangerously high water and waves continue, even though winds may be less than hurricane force.

**Hurricane Conditions (HURCON).** Posted at each base gate, and displayed prominently at the entrance to all base facilities.

**HURCON 5** - 96 hours prior to the forecast arrival of 50-knot/58 MPH winds or greater

**HURCON 4** - 72 hours prior to the forecast arrival of 50-knot/58 MPH winds or greater

**HURCON 3** - 48 hours prior to the forecast arrival of 50-knot/58 MPH winds or greater

The installation commander will determine at this time if evacuation is necessary

**HURCON 2** - 24 hours prior to the forecast arrival of 50-knot/58 MPH winds or greater

**HURCON 1** - 12 hours prior to the forecast arrival of 50-knot/58 MPH winds or greater

### HURRICANE CATEGORIES

**The strength and damage potential of hurricanes is rated with the Saffir-Simpson scale. This scale ranks the storms in categories. Using this scale, a category one storm is a minimal hurricane and a category five is a very dangerous storm capable of causing catastrophic damage.**

---

## HURRICANE INFORMATION (CONT.)

### CATEGORY WIND SPEED DAMAGE

**Category 1: 74-95 mph**

**Category 2: 96-110 mph**

**Category 3: 111-129 mph**

**Category 4: 130-156 mph**

**Category 5: 157 mph+**

**Where to Stay** Hurlburt Field's lodging facilities are secure, having survived Hurricanes Dennis, Ivan, George, Michael and Sally with little or no damage. In most cases, the safest place is your room. Keep doors locked and close draperies and blinds in the remote chance that windows may be broken. If evacuation to a base shelter, local shelter, or another area is directed, you will be notified by lodging personnel.

**Shelter Living** If you elect to go to a shelter, or are directed to do so, here are some important items that you will need to remember:

- ◇ Shelters are not hotels - they will not be able to provide you with any conveniences or luxuries.
- ◇ Bring any items you have stocked up on - books, games, and toys are helpful if you have children with you.
- ◇ Bring your pillows and bed linens with you, as the shelter will not provide them. You may return them to us once the disaster is over.
- ◇ Shelters have a community environment that consists of a large number of people. It is important to be considerate and cooperative and follow the directions of the shelter management staff. Volunteer your services whenever possible.
- ◇ Another thing you may experience during your shelter stay is the shortage or rationing of food and water, especially during the first few hours. This is a temporary condition - you will not starve. Bring any potable water and non-perishable foods with you to the shelter.
- ◇ When you arrive at the shelter, you will be required to present identification, address, and phone number to the shelter management team. Should you decide to leave the shelter, you must notify the shelter management team of your whereabouts.
- ◇ **Pets are not allowed in public shelters.** The only exceptions are dogs for the hearing or visually impaired.
- ◇ Be patient concerning the situation, as your attitude will help the morale of the entire group.
- ◇ Rumors can become widespread during a prolonged shelter stay, and are disruptive to the operation. Listen to official information only, and don't take part in another person's speculations.

---

## HURRICANE INFORMATION (CONT.)

### Before The Storm

- ◇ Keep tuned to local radio and television stations for latest alerts, warnings, and advisories.
- ◇ Stock up on non-perishable foods, batteries, flashlights, clean clothes, required prescriptions, and other items necessary to make your stay more comfortable.
- ◇ If you have a vehicle with you, fill the gas tank - gas pumps won't work without electrical power.
- ◇ The Commissary, Base Exchange, and Shopette may not be accessible for several days – stock up on needed items early, as the sundry stock available in rooms will not be replenished until the “All Clear” is announced.
- ◇ Notify your family, friends, and home duty station of your location and plans to keep them aware. Ask them to wait to hear from you until after the storm. Incoming calls can shut down local surviving phone networks.

### During The Storm

- ◇ Remain indoors until authorities give the “All Clear”.
- ◇ If the center or “eye” of the storm passes directly over, there will be a lull in the wind lasting from a few minutes to half an hour or more. Remember, the wind will return suddenly from the opposite direction, frequently more violent than before.
- ◇ **Be Calm.** Your ability to handle this emergency will inspire and help others.

### After The Storm

- ◇ Be careful when you go outside - some damage may not be readily visible.
- ◇ Don't touch loose or dangling wires - report such damage to the front desk (ext. 3300) or in person if phone service has not been restored. Lodging personnel will forward your findings through our Unit Control Center for repair.
- ◇ Electrical power and phone service will be restored as soon as possible. Hurlburt's recovery teams have an excellent record of responding to these emergencies, and you can be assured that they are doing everything possible to return the base to full operations.
- ◇ Guard against spoiled foods if power has been off for an extended period of time. Boil all drinking water until you are notified that the water is safe to drink.
- ◇ Unless you are qualified to render valuable emergency assistance, stay away from affected areas where you may hamper first aid or rescue work.
- ◇ Drive carefully. Debris-filled streets are dangerous, and may hamper rescue operations. Along the coast, soil may be washed away from beneath pavement, and may collapse under the weight of vehicles.
- ◇ Notify family, friends, and your home duty station of your whereabouts.
- ◇ Understand that this disaster has affected EVERYONE. Be patient, understanding, and calm.

The most stressful part of dealing with a hurricane is the recovery process.

---

## HURRICANE INFORMATION (CONT.)

### Sources of Information:

#### The Weather Channel

#### Local Television Stations

#### Local Radio Stations

WKSM - FM 99.5 - Fort Walton Beach, Florida

WYBZ - FM 105.5 - Fort Walton Beach, Florida

WFTW - AM 1260 - Fort Walton Beach, Florida

WEBY - AM 1370 - Milton, Florida

WXBM - FM 102.7 - Pace, Florida

WECM - AM 1450 - Milton, Florida

**Shelters** Listen to local radio stations for announcements on local area shelter openings. For those desiring shelter at Eglin AFB, individuals should check in at the Youth Center near the west gate or at the Fitness Center on the East Side of the base.

#### On-Base

Bldg. 90232 – Commando Fitness Center

Bldg. 90304 – Youth Center

Bldg. 90517 – Aderholt Fitness Center

#### Off-Base

##### OKALOOSA COUNTY PUBLIC SHELTERS

Pets? No – Baker School, 1369 14th St., Baker, FL 32531

Pets? No – Davidson Middle School 6261 Old Bethel Rd., Crestview FL 32536

Pets? No – Antioch Elem School 4700 Whitehurst Ln., Crestview, FL 32536

Pets? No – Kenwood Elem School 15 Eagle St. NE, Fort Walton Beach, FL 32547



---

## HURRICANE INFORMATION (CONT.)

### OKALOOSA COUNTY SPECIAL NEEDS SHELTER:

Pets? No – Davidson Middle School 6261 Old Bethel Rd., Crestview

### OKALOOSA COUNTY PET SHELTER:

First Central Baptist Church, located at 951 N Ferdon Blvd., Crestview

### OKALOOSA COUNTY PET SHELTER:

First Central Baptist Church, located at 951 N Ferdon Blvd., Crestview

### SANTA ROSA COUNTY PUBLIC SHELTERS:

Pets? No – Milton Community Center, 5629 Byrom St., Milton

Pets? No – S.S. Dixon Intermediate School, 5540 Education Dr., Pace

Pets? No – Avalon Middle School, 5445 King Arthur's Way, Milton

### SANTA ROSA COUNTY SPECIAL NEEDS SHELTER:

Pets? No – Bennett C. Russell Elementary, 3740 Excalibur Way, Milton

Pets? No – Sims Middle School, 5500 Education Dr., Milton

**Hurricane Evacuation.** Should the installation commander deem that evacuation of Hurlburt Field is necessary, one of the designated evacuation destinations is Maxwell Air Force Base in Montgomery, Alabama.

**Directions to Maxwell AFB.** From Hwy. 331, turn West on South Boulevard to Interstate 65, then turn North on to Herron St. Exit 1 mile past the Interstate 85 junction. Proceed straight at the first signal light to Bell St. Turn left and move into the right-hand lane. This will lead you directly to the base. Upon arrival at Bldg. 842, you will be asked to park on the north side of the Fitness Center (Bldg. 841) next to Bldg. 842.



---

## **1 SOW EMERGENCY INFORMATION**

(PAS Code: EE0VFDJG)

**Imminent Danger/Emergency  
DIAL 911**

**Command Post Office:**

(850) 884-8100

Email: [1sow.cmd.pst@hurlburt.af.mil](mailto:1sow.cmd.pst@hurlburt.af.mil)

**Total Force Accountability Center (TFAC):**

(850) 884-3063

**Air Force Personnel Center (AFPC):**

(800) 353-6807

**Red Cross Emergency Services:**

(800) 733-2767

**Total Force Service Center (MyFSS/A1 Service Desk):**

(800) 525-0102 / DSN: 665-5000

**Air Force Personnel Accountability and Assessment System (AFPAAS) website:**

<https://afpaas.af.mil>

**Military One Source website:**

[www.militaryonesource.com](http://www.militaryonesource.com)

*Monitor local radio and TV stations for more info.*



---

## TORNADO INFORMATION

1. Before a storm threatens, identify the safest areas to take cover.
  - a. Pick a place where personnel can gather if a tornado is spotted. It could be a basement, center hallway, bathroom, or closet on the lowest floor, away from exterior walls and windows.
  - b. If you are in a 2-3 (or higher) story building, you may not have time to get to the lowest floor, if this is the case, pick a place in the hallway in the center of the building.
  - c. Keep this place uncluttered.
  - d. Brief all personnel on what to do if a tornado is spotted.
  - e. Post tornado instruction where everyone can easily read them.
  - f. Review these procedures annually.
  
2. Stay tuned for storm warnings.
  - a. Listen to local radio and TV stations for updates.
  - b. Monitor your unit's radio nets for emergency messages.
  - c. Pay attention to the Base Warning and Alerting System.
  - d. Know the difference between a Tornado Watch and Tornado Warning:
    - 1) Tornado Watch: Climatic conditions are favorable for the formation of a tornado.
    - 2) Tornado Warning: A tornado has been sighted by visual or radar observation. **TAKE COVER IMMEDIATELY.**
  - e. When a Watch or Warning has been implemented, pass this information to all personnel, by any means available, immediately.
  
3. When a Tornado Watch is issued:
  - a. Listen to local radio and TV stations for updates.
  - b. Be alert to changing weather conditions. Blowing debris or the sound of a tornado approaching, may be your warning.
  - c. Pre-stock first aid kits, flashlights, chemical lights, and other emergency supplies in your tornado shelter, if possible. Blankets or sleeping bags can provide additional protection.
  - d. If outdoors, consider terminating non-essential activities, and pre-plan where you will seek shelter if lightning or a tornado threatens.
  
4. When a Tornado Warning is issued:
  - a. A long, steady, 3-5 minute tone on the base sirens indicates that a tornado has been sighted.
  - b. **TAKE COVER IMMEDIATELY!**
  - c. If you are outside, rush to a nearby building or lie flat in a ditch or low-lying area.
  - d. If you are in a car or mobile home, get out immediately and head for safety. **DO NOT TAKE SHELTER IN A VEHICLE.**

---

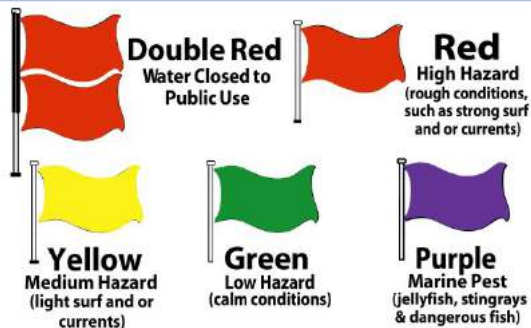
## TORNADO INFORMATION (CONT.)

5. When the “All Clear” is announced on the Base Warning and Alerting System:
  - a. Once the danger has passed, carefully exit the shelter area, perform damage assessment.
  - b. Account for all personnel, perform first aid, and seek medical attention if necessary. Report all fires or casualties.
  - c. Beware of broken glass, collapsed or weakened structures, downed utility lines, broken gas lines, etc. Stay out of damaged area.
  - d. Report all damage to your Unit Control Center and/or the CE Emergency Operations Center.

## BEACH FLAG WARNINGS

As a coastal community, the weather affects the waters of our beautiful sugar white Beaches. As such, the State of Florida together with federal organizations developed a flag warning system. Information/warning flags are posted at public Beaches reflecting the current tidal conditions. For your enjoyment and safety, please obey the warnings flags flown at local Beaches. Note: Caution should be exercised in the absence of flags.

### BEACH FLAG WARNING SYSTEM



Get more information at <http://www.welcometonorthwestflorida.com/fsBeaches.htm>

## WILD LIFE

Hurlburt Field has an abundance of wildlife. The most common incidents with wildlife are bears, alligators, feral cats, foxes, snakes and multiple variations of poisonous spiders. For the safety of our guest's, employees and base personnel, feeding wild animals is strictly prohibited. If bears or alligators are encountered, dial 911 and report the incident to Security Forces. **Do not attempt to approach or interact with the animals.** Please use caution outdoors, particularly with children and pets, secure vehicles and place garbage in appropriate receptacles.

---

## GUEST RESPONSIBILITIES

- ❖ **Check-out time is 1100.** A late check-out fee will apply after 1100. **A late check-out fee is one night's room charge.** Late checkouts are only granted based upon availability.
- ❖ We are required to process payment every 15 days. You may give us authorization to bill your credit card automatically or stop by either of our front desks to pay in person. Please inquire at the front desk for more information regarding billing.
- ❖ We want to ensure our housekeeping staff provides the best service possible; however, we are unable to move guests' personal belongings from where the guest has placed them. Therefore, before leaving your room, please ensure all articles of clothing are stored in the closet or dresser drawers and all other personal belongings are tidy.
- ❖ Secure valuables and cash in the safe available in your guest room. We are not responsible for lost or stolen items.
- ❖ Please be gentle with the furniture and leave furnishings where they are currently located. Guests will be responsible for any damages caused by movement or misuse.
- ❖ Please do not use linen to clean shoes, or for any other purpose other than its intended use.
- ❖ If you are a shift worker, let us know the ideal time between 0830 and 1430 to clean your room. We want to make your stay as comfortable as possible.
- ❖ Report any maintenance or appliance failure to the front desk or housekeeping. Dial "0" from your room phone to reach the front desk, or housekeeping at extension 3316 from 0730-1630.
- ❖ Please ensure all dishware is clean upon departure.
- ❖ Guests staying in Pet-Friendly rooms are responsible for properly disposing of their pets' waste.
- ❖ No-Smoking Policy- *In accordance with AFMAN 34-135, para 3.5.1.: "All Air Force lodging common areas and guest rooms, including TLF units, are no-smoking areas."* Guests who violate the no-smoking policy will be charged up to a **\$150.00** fee (based on expenses incurred) to return the room to available inventory. **(T-1)**. Guests who violate this policy are subject to eviction as determined by the lodging manager; appeals should be made through the Force Support Squadron Commander or Director.
- ❖ *Any damages to the room, furniture, or linen will be charged to the credit card we have on file. If you discover damages to your room upon check-in, please let the front desk know immediately.*





---

## LODGING INFORMATION

### ROOM RATES:

Effective **1 Oct 23**, the lodging rates as listed below are the approved rates for FY24. These rates are within the per diem levels for all room types at this location. The increase in rates is due primarily to the DoD-directed change from some appropriated funds (APF) support to 100% Nonappropriated funds (NAF) support.

	Oct, Mar-May, Aug-Sep	Nov-Feb	Jun-Jul
<b>Lodging Quarters</b>			
Visiting Quarters (VOQ/VQs)	\$154	\$94	\$175
*Temporary Lodging Facilities (TLFs)	\$164	\$101	\$192
Distinguished Officer Quarters (ODV)	\$167	\$101	\$208
Distinguished General Officer Quarters (OGN)	\$167	\$101	\$208
*Pet-Friendly Temporary Lodging Facilities (TLFs) additional \$10.00 Pet Fee per night			

### SERVICE FEES:

<b>Deep Cleaning/Smoking in Room:</b>	Minimum of \$150.00, plus additional cleaning fees and furniture/linen replacement cost if necessary
<b>Unauthorized Pet in Room:</b>	Minimum of \$150.00 for deep cleaning and a \$10.00 per night pet fee for entire stay in room.
<b>Excess Cleaning Fees:</b>	Varies case-by-case
<b>Miscellaneous Service:</b>	Varies case-by-case
<b>Missing/Broken Item:</b>	Varies by replacement/labor costs
<b>Room/Furniture Damage:</b>	Varies by replacement/labor costs

### TELEPHONE CHARGE RATES:

<b>DSN Calls:</b>	No Charge
<b>On-Base Calls (884 and 881 prefixes only):</b>	No Charge
<b>Long Distance Calls:</b>	Varies*
<b>Toll Free Calls (800; 866; 877; 888 prefix):</b>	No Charge

*\*Call the front desk by dialing "0" from your room phone to verify long distance charges.*



---

## **GUEST SERVICES AND INFORMATION**

### **BUSINESS CENTER**

For your convenience, we have two business centers. They are located in the lobbies of bldgs. 90509 and 90918. They are both open 24 hours a day, 7 days a week.

### **BUSINESS SUITE PAYMENTS**

For our Distinguished Visitors, the Commando Inn has provided a quick method of payment by placing an express checkout envelope in your room. Distinguished Visitors may pay their sundry, room, and telephone charges prior by using the payment envelopes provided in the room. Payments can be made via personal check, cash or credit card provided we have the credit card number on file (VISA, MC or Amex only). This will enable you to leave your key in the room and depart without having to make another trip to the front desk.

### **BUSINESS SUITE SUNDRIES**

Rooms that have stocked items such as sodas, candy, liquor, etc. are replenished on an as needed basis and are available for purchase. Please annotate which items you have used using the carbon copied sundry slips in your room and indicate your payment method.

### **CLASSIFIED STORAGE (OVER NIGHT REPOSITORY)**

Hurlburt Field Command Post is an overnight repository for classified storage. Command Post is located at 217 Terry Ave. Bldg. 90208. You may call them by dialing (850) 884-8100.

### **COFFEE MAKER INSTRUCTIONS**

#### **CV1 Machine (Single cup coffee maker)**

- ❖ Insert disposable brew basket and coffee filter packet into the coffee maker.  
(Do not remove the coffee from the filter paper.)
- ❖ Fill coffee cup with cold water
- ❖ Pour water into reservoir
- ❖ Place coffee cup under brew basket
- ❖ Press and release start button
- ❖ Light will turn off once the brewing process is complete

---

## **GUEST SERVICES AND INFORMATION (CONT.)**

### **Keurig Machine**

- ❖ Press the large PRESS TO OPEN button on top of the brewer
- ❖ Lift the Brewer Handle, insert a K-Cup. (Do not puncture or remove foil lid)
- ❖ Lower the handle completely and firmly to close
- ❖ The hot water tank will open automatically
- ❖ Fill the hot water tank with tap water or bottled water up to the fill line indicator
- ❖ Close the hot water tank cover
- ❖ The **PLACE CUP** light will be flashing
- ❖ Place a 10oz coffee cup in the dispense area on the drip tray. Press the flashing BREW button
- ❖ The **HEATING** light will be illuminated. When the water reaches temperature, the **HEATING** light will turn off and the coffee will start to dispense in less than 3 minutes

### **“DO NOT DISTURB SIGN”**

The “Do Not Disturb” sign may not be displayed for more than two consecutive days. Housekeeping is required to enter and service the room on the third day. If you would like your room serviced daily, please make sure the sign is removed by 1400. Pet-Friendly TLF units are required to be serviced daily. Please make sure the sign is removed by 1100 to ensure the housekeeping staff has enough time to service the unit. All pets must be kenneled while the housekeeping staff is servicing your unit.

### **ENERGY CONSERVATION**

Conserve energy by turning off the television and lights when room is not being occupied. Lodging rooms are equipped with energy efficient light bulbs. When turned on, the light bulbs will appear dull until they have warmed up. Please allow a few minutes for this process.

### **FAX SERVICES**

Free internet access, printing, copying, and DSN fax services are available at the Front Desk. Please contact the Front Desk for additional information.

### **FITNESS ROOM**

Cardio equipment is available in bldg. # 90918, Sound Side. Please see base map for directions to this facility.

---

## **GUEST SERVICES AND INFORMATION (CONT.)**

### **FRONT DESK**

Our Front Desks are open 24 hours a day, 7 days a week. We also offer complimentary coffee, hot chocolate, and tea in the lobbies. Dial "0" from your room phone should you require any assistance or information.

### **HOUSEKEEPING SERVICES**

The Housekeeping department strives to make your stay a pleasant experience by providing you a clean and sanitized room at check-in. For the safety of our housekeepers and to better assist you, please make sure that floor and bed is cleared. The Housekeeping staff is trained not to touch or move guests' personal belongings. Please utilize closets, drawers, and the safe to store personal belongings.

Below is a list of services that we provide during your stay.

### **LIGHT SERVICE**

- ❖ Amenities restocked: coffee and coffee supplies
- ❖ Areas cleaned: bathroom to include the tub/shower, carpets, counter tops, floors, mirrors, sink, toilets and vanities
- ❖ Bed will be made if there are no personal belongings on top of the bed
- ❖ Light dusting of furniture
- ❖ Towels will be replaced if left on the floor
- ❖ Wastebaskets emptied and cleaned

### **FULL SERVICE (7<sup>TH</sup> DAY)**

(Daily stay-over service to include the following):

- ❖ Bed linen will be replaced.
- ❖ Furniture will be polished.
- ❖ More thorough cleaning of the shower door/curtains.

---

## **GUEST SERVICES AND INFORMATION (CONT.)**

### **CHECK-OUT**

- ❖ All beds are made with freshly cleaned mattress pad, sheets, pillow covers, pillow cases, blanket, and bedspread
- ❖ All personal/coffee amenities and towels are replaced
- ❖ All areas are cleaned to include ceilings, ceiling fans, baseboards, light fixtures, walls, windows/sills, sofa cushions, and vents
- ❖ Entire bathroom is cleaned and sanitized
- ❖ Entire kitchen to include all appliances, dishware, and utensils are cleaned and sanitized
- ❖ Overall high and low dusting and furniture polishing
- ❖ The carpet will be vacuumed to include under and behind the furniture
- ❖ The floors are swept, mopped, and sanitized
- ❖ Wastebaskets are emptied, cleaned, and sanitized

### **LAUNDRY FACILITIES**

- ❖ Building 90341 2 bedroom TLFs, located inside each unit
- ❖ Building 90502 located in breezeway on each floor, except for 2nd floor in the Annex
- ❖ Sound Side Building 90918 located on 1st floor across from room 8138 and 2nd floor across from room 8241
- ❖ One bedroom TLFs located in building 90373
- ❖ General Officer Quarters located in building 90379

### **LOST AND FOUND**

**Please call the Front Desk at (850) 884-7115 to retrieve lost items. ID cards and line badges are immediately turned in to Security Forces.**

### **MAIL**

**For your postal needs, please call the Postal Service Center at (850) 884-6219 to set up a General Delivery box for your temporary use. Copy of orders required.**

---

## **GUEST SERVICES AND INFORMATION (CONT.)**

### **MESSAGE SERVICE**

Emergency messages will be delivered to your room by lodging or security personnel. Routine messages can be taken through our voicemail system. To check voice mail, please press the message button, enter your room number, press # and follow the voice prompts.

### **NEWSPAPER**

Our base's newspaper is "Hurlburt Warrior" and is available online at [hurlburtwarrior.com](http://hurlburtwarrior.com).

### **MAGAZINE – *My Hurlburt Life***

Hurlburt Field's monthly magazine, highlights the current happenings at the Force Support Squadron Facilities such as the Fitness Centers, Dining Facilities, Bowling Center, CDC's, etc. You will find a current copy in your room and at various locations across Hurlburt Field.

### **RECYCLING**

In order to reduce, reuse, and recycle, please utilize the blue recycling container in your room for paper, plastic and cans. These items will be turned in to the base recycling center.

### **RESERVATIONS**

Should you require further reservations at the Commando Inn, please contact our Front Desk staff by dialing "0" from your room phone or (850) 884-7115. We can also assist you with reservations for commercial off base hotels.

### **SAFE INSTRUCTIONS**

- ❖ Upon first using the safe, turn the black reset switch located on the inside of the door next to the hinge to the ON position
- ❖ Locking the safe with a code:
  1. Enter any 4-digit code into the safe keypad and press the "#" button
  2. The safe's display will read "CLOSE" and the safe will lock
  3. To open, enter the same code
  4. The safe's display will read "OPEN" and the safe will unlock
  5. The safe's memory will clear and the user may now lock the safe with a different code

---

## **GUEST SERVICES AND INFORMATION (CONT.)**

### **ICE MACHINES**

- ❖ Building 90502 located in breezeway on each floor and the second floor in the Annex
- ❖ Building 90918 located on 1<sup>st</sup> floor across from room 8138 and 2<sup>nd</sup> floor across from room 8241

### **SUNDRY STORES**

Hungry or need a drink to quench your thirst? Our Sundry Shops are located in the lobbies of bldgs. 90509 and 90918. They are open 24 hours a day, 7 days a week. We offer a variety of non-alcoholic and alcoholic beverages, chips, candy, and personal hygiene products.

### **VENDING MACHINES**

- ❖ Building 90502 located in the central common area near the elevator
- ❖ Building 90918 located on 1<sup>st</sup> floor across from room 8138 and 2<sup>nd</sup> floor across from room 8241

### **WAKEUP CALL**

Dial 73050 from your room phone and follow voice prompts to set or cancel a wakeup call



---

## TELEPHONE INFORMATION

### TELEPHONE DIALING INSTRUCTIONS

A list of telephone charge rates is on the “Service Fees” page under the Lodging Info tab.

### EMERGENCY: DIAL 911

### OUTGOING CALLS

- ❖ To call the Front Desk: Dial 0
- ❖ To call a base extension: Dial 99 + Digit Phone Number
- ❖ To call another room: Dial Room Number
- ❖ To place a local call: Dial 99 + Area Code + Phone Number (Local calls may accrue a charge)
- ❖ To place a long distance call: Dial 99 + 1 + Area Code + Number
- ❖ To place a DSN call: Dial 97 + 94 + DSN Number
- ❖ To place a Toll Free call: Dial 99 + 1 + (8XX) + Desired Number
- ❖ To place a collect call: Dial 99 + 0 + 800 + Area Code + Number
- ❖ International Direct Dial: 99 + 011 + Country Code + Number
- ❖ International Credit Card & Collect: 99 + 01 + Number, Wait for Operator to answer

### INCOMING CALLS

- ❖ To receive calls: Dial (850) 884-7115/6245 or DSN 579-7115/6245, and follow the prompts from the operator.
- ❖ To dial a guest room from outside line, follow the previous instructions, and enter the room or extension number when prompted.
- ❖ To dial a guest room in-house, dial the room number or “0” for Guest Services assistance

### VOICEMAIL (indicator light will be on):

- ❖ Please press the message button, enter you room number, press # and follow the voice prompts

### WAKE UP CALLS:

- ❖ Dial 73050 from room phone and follow voice prompts to set or cancel wakeup call

## HIGH SPEED INTERNET INFORMATION

**Internet service and support provided by Mid Atlantic Broad Band**

**Help Desk Support: 1 (866) HELPKIT or 1 (866) 435-7548**

**Email: [support@midatlanticbb.com](mailto:support@midatlanticbb.com)**

---

## TELEPHONE INFORMATION (CONT.)

### HURLBURT FIELD QUICK REFERENCE PHONE LIST

#### AIRMAN & FAMILY SERVICES

Airman & Family Readiness (850) 884-5441  
Child Development Center (850) 884-6664  
Community Activities Center (850) 884-5080  
Education Center (850) 884-6724  
Family Child Care (850) 884-4300  
Library (850) 884-6266  
Teen Center (850) 884-6355  
Youth Center (850) 884-6355

#### ARTS & CRAFTS

Auto Hobby Shop (850) 884-6674  
Plaque & Trophy Shop (850) 884-5294

**BASE EXCHANGE** (850) 581-8225

#### BOWLING CENTER

Hurlburt Lanes (850) 884-6941  
Sparetime Grill (850) 884-6470

**CHAPEL** (850) 884-7795

#### CIVILIAN PERSONNEL

Civilian Personnel (850) 884-5215  
NAF Human Resources (850) 884-6464

#### CLUB FACILITIES

Soundside Club (850) 884-7507  
The B1STRO (850) 884-1920  
The Hooch Restaurant & Bar (850) 884-7507  
Velocity Café (850) 884-7365

**COMMISSARY** (850) 881-2139

**FINANCE (CPTS)** (850) 884-4119

#### FITNESS CENTERS

Aderholt (850) 884-6884  
Commando (850) 884-4412  
Riptide (850) 884-5121

#### GOLF COURSE

Gator Lakes Golf Course (850) 881-2251  
Oasis Café (850) 881-5731

**HOUSING OFFICE** (850) 884-7505

#### INFORMATION TICKETS & TRAVEL

Leisure Travel (850) 884-5699  
Tickets & Tours (850) 884-6795

**LAW ENFORCEMENT** (850) 884-7777

**LEGAL OFFICE** (850) 884-7821

**LODGING** (850) 884-7115

**MED GROUP (Appt. Line)** (850) 881-1020

#### MILITARY DINING FACILITIES

The Reef (850) 884-4970  
Riptide (850) 884-5127  
Flight Kitchen (850) 881-5128

#### MILITARY PERSONNEL FLIGHT

Customer Service (850) 884-5321  
ID Cards/CACs (850) 884-5322  
Passports (850) 884-2017

#### OUTDOOR RECREATION

Aquatic Center (Base Pool) (850) 884-6866  
FAMCamp (850) 884-6939  
Dive Shop (850) 881-1576  
Marina (850) 884-6939  
Rifle & Pistol Club (850) 884-6939  
Skeet Range (850) 884-6366

**OFFICIAL MAIL CENTER** (850) 884-7699

**PASS & REGISTRATION** (850) 884-5233

**RECYCLING CENTER** (850) 884-7577

**SHOPPETTE** (850) 581-0488

**VISITOR CONTROL CTR** (850) 884-2310

---

## BASE FACILITIES

*For the most up-to-date- information visit [www.myhurlburt.com](http://www.myhurlburt.com)*

### AIRMAN AND FAMILY READINESS CENTER\*

220 Lukasik Ave.  
Bldg. 90213  
(850) 884-5441

\*Offers many programs to include Air Force Aid Society, Personal Financial Management Program, Deployment Support, Personal and Work Life, Relocation, Information and Referral, Exceptional Family Member Program, Casualty Assistance, Key Spouse, Personal and Family Readiness Program, Transition Assistance Program, and many more. Visit [www.myhurlburt.com](http://www.myhurlburt.com) for more!

### BOWLING CENTER

**Hurlburt Lanes Bowling Center**  
442 Cody Ave.  
Bldg. 90231  
(850) 884-6941

**Sparetime Grill**  
Inside Hurlburt Lanes  
Bldg. 90321  
(850) 884-6470

### CHILD DEVELOPMENT CENTERS & YOUTH PROGRAMS

**CDC Main**  
108 McMillan St.  
Bldg. 90353  
(850) 884-6664

**CDC East**  
133 Leilmanis Dr.  
Bldg. 91168  
(850) 881-1260

**CDC West**  
26 Weaver St.  
Bldg. 90306  
(850) 884-5154

**Family Child Care**  
301 Tully St.  
Bldg. 90509  
(850) 884-4300

**Youth Center\***  
117 McMillan St.  
Bldg. 90304  
(850) 884-6355

\*Features the School Age Program, Open Rec & Pre-Teen, Teen Center and Youth Sports

### CIVILIAN PERSONNEL

**Civilian Personnel (APF)**  
212 Lukasik Ave.  
Bldg. 90210, Room 143  
(850) 884-5212/5224

**Human Resources (NAF)**  
145 Letourneau Ave.  
Bldg. 90327, Room 145  
(850) 884-6464

### CLUBS, CATERING AND DINING

**The B1STRO**  
100 Bartley St.  
Bldg. 1  
(850) 884-1920

**The Hooch (dinner only)  
Restaurant & Bar**  
107 Kissam St.  
Bldg. 90918  
(850) 884-7507

**The Soundside Club  
& Catering**  
107 Kissam St.  
Bldg. 90918  
(850) 884-7507

---

## BASE FACILITIES (CONT.)

*For the most up-to-date- information visit [www.myhurlburt.com](http://www.myhurlburt.com)*

### FITNESS CENTERS

**Aderholt**

259 Tully St.  
Bldg. 90517  
(850) 884-6884

**Commando**

452 Cody Ave.  
Bldg. 90232  
(850) 884-4412

**Riptide**

150 Howie Walters Rd.  
Bldg. 91007  
(850) 881-5121

### FORCE DEVELOPMENT

**Career Assistance Advisor**

424 Cody Ave.  
Bldg. 90229  
(850) 884-3912

**Education & Training**

221 Lukasik Ave.  
Bldg. 90220  
(850) 884-6724

**First Term Airman Center**

424 Cody Ave.  
Bldg. 90229  
(850) 884-5797

### GOLF

**Gator Lakes Golf Course**

403 Walkup Way  
Bldg. 91300  
(850) 881-2251

**Oasis Café**

403 Walkup Way  
Bldg. 91300  
(850) 881-5731

**Pro Shop**

403 Walkup Way  
Bldg. 91300  
(850) 881-2251

### INFORMATION TICKETS AND TOURS

**Leisure Travel**

424 Cody Ave.  
Bldg. 90229  
(850) 884-5699

**Tickets and Tours**

424 Cody Ave.  
Bldg. 90229  
(850) 884-6795

### MILITARY DINING

**The Reef**

313 Cody Ave.  
Bldg. 90326  
(850) 884-4970

**The Riptide**

150 Howie Walters Rd.  
Bldg. 91007  
(850) 881-5127/5128

### MILITARY PERSONNEL

212 Lukasik Ave.  
Bldg. 90210

**Career Development**

(850) 884-4339

**Force Management**

(850) 884-3935

**ID/CAC Office**

(850) 884-5321/5322

**Installation Personnel Readiness**

(850) 884-4429

**Passports**

(850) 884-2017

---

## BASE FACILITIES (CONT.)

*For the most up-to-date- information visit [www.myhurlburt.com](http://www.myhurlburt.com)*

### **Barber Shop – The Exchange**

(850) 581-8893

Bldg. 91012

### **COMMUNITY COMMONS**

443 Cody Ave.

(850) 581-8893

Bldg. 90377

### **Dive Shop**

(850) 881-1576

### **Commando Library**

(850) 884-6266

### **Velocity Café/Kraken Kafé**

(850) 884-7365/884-4045

### **OUTDOOR RECREATION**

#### **Aquatic Center (Base Pool)**

287 Cody Ave.

Bldg. 90300

(850) 884-6866

#### **FAMCamp**

210 Down Cir.

(850) 797-0103

(850) 884-6939 (weekend call-in)

#### **Marina**

100 Corlew Rd.

Bldg. 92473

(850) 884-6939

#### **Outdoor Recreation**

100 Corlew Rd

Bldg. 92473

(850) 884-6939

#### **Rifle and Pistol Club**

100 Corlew Rd.

Located off Red Horse Rd.

(850) 884-7629

#### **Skeet Range**

6<sup>th</sup> Ranger Rd.

(850) 797-9435

#### **Eglin Aero Club**

200 Escambia Rd.

Eglin AFB, FL

(850) 882-5148

#### **KT's Kraken Tiki Bar**

100 Corlew Rd.

Bldg. 92473

(850) 884 6939

---

## **BASE FACILITIES (CONT.)**

*For the most up-to-date- information visit [www.myhurlburt.com](http://www.myhurlburt.com)*

### **HURLBURT FIELD CHAPEL SERVICES**

210 Cody Ave.  
(850) 884-7795

#### **Catholic**

Sunday Mass - 0930 hours  
Weekday Mass (Mon-Thu) - 1130 hours  
Reconciliation (Sat or by apt) - 1600-1630 hours  
Sunday School (K-8th Grade) - 1045-1145 hours

#### **Protestant**

Traditional Worship (Sun) - 0800 hours  
Contemporary Worship (Sun) - 1100 hours  
Religious Education  
Sunday School (Age 3 - adult) - 0930 hours

### **EGLIN AFB CHAPEL SERVICES**

202 N 8th St., Ste. 1  
(850) 882-2111

#### **Jewish**

Sabbath Service (Fri) - 1930 hours

#### **Muslim (Inter Base)**

Jumuah Service (Fri) - 1300 hours

### **OFF BASE RELIGIOUS SERVICES**

#### **Orthodox**

Divine Liturgy (Sunday) - 1000 hours  
The Greek Orthodox Church on Hwy. 98,  
Mary Esther  
(850) 244-0822

---

## **BASE FACILITIES (CONT.)**

*For the most up-to-date- information visit [www.myhurlburt.com](http://www.myhurlburt.com)*

### **LAUNDRY AND DRY CLEANING**

#### **Good Neighbors Cleaners and Alterations**

1500 Freedom Self Storage road # 9  
(850) 862-9972

#### **Total Laundry Services**

75 Eglin Pkwy., Ste. 113, Fort Walton Beach  
(850) 362-6006

#### **Bangkok Cleaners**

125 1<sup>st</sup> St. SE, Fort Walton Beach  
(850) 243-4556

---

## OFF BASE FACILITIES

### **ANIMAL VETS & KENNELS:**

Listed below are off-base pet kennels for your convenience. Hurlburt Field does not have kennels available. Commando Inn lists these providers as a convenience only, and does not endorse them. Please take the time to research all facilities prior to visit to ensure the best for your pet. Military Working Dog teams should contact the on base K-9 team for assistance.

#### **Bayside Hospital for Animals (Vet Services)**

251 Racetrack Rd. NE, Fort Walton Beach, FL 32547  
(850) 864-1857

#### **Canine Discovery Emerald Coast Animal Hospital**

350 Miracle Strip Pkwy., Mary Ester, FL  
(850) 243-5080

#### **Companion Animal Hospital & Boarding Center (Vet, Kennel, Grooming Services)**

25 Carson Drive NE, Fort Walton Beach, FL 32548  
(850) 243-7144

#### **Gulf Coast Animal Care (Kennel & Grooming Services)**

Fort Walton Beach, FL 32548  
(850) 226-6872

#### **Murphy Veterinary Hospital (Vet Clinic Only)**

2387 W Hwy. 98, Mary Esther, FL 32569  
(850) 581-0700

#### **Navarre Animal Hospital (Vet Clinic Only)**

8172 Navarre Pkwy., Navarre, FL  
(850) 939-1373

#### **Shady Lane (Kennel & Grooming Services)**

700 Shady Lane Dr., Fort Walton Beach, FL  
(850) 862-7432

#### **Wynn Haven Vet (Vet Clinic Only)**

351 Woodland Ave., Mary Esther, FL 32569  
(850) 273-6997

**These kennels may house pets during disasters (hurricane, tropical storm, etc.).  
Please contact facility for more information.**



---

## BASE FACILITIES (Cont.)

### MEDICAL FACILITIES

#### **Hurlburt Field Military Treatment Facility**

113 Lielmanis Ave.

Hurlburt Field, FL 32544-5600

(850) 881-1020

**Driving Directions:** Go straight through 4 way stop by building 90509 onto Simpson Ave. Turn right onto Cody Ave. Turn left onto Independence Ave. Turn right onto Lielmanis Ave.

***\*HURLBURT FIELD DOES NOT HAVE AN EMERGENCY ROOM.***

**For emergencies call 911. Closest emergency room is Fort Walton Beach Medical Center.**

#### **Fort Walton Beach Medical Center**

1000 Mar-Walt Dr.

Fort. Walton Beach, FL 32547

Phone: (850) 863-7610

**Driving Directions:** Go straight through 4 way stop by building 90509 onto Simpson Ave. Turn right onto Cody Ave. Turn left onto Hwy. 98. Turn left onto Mary Ester Cutoff. Turn left onto Beale Pkwy. Turn right onto Mar-Walt Dr.

#### **96<sup>th</sup> Medical Group\*\***

307 Boatner Rd.

Eglin AFB, FL 32452

(850) 883-8600

**Driving Directions:** Go straight through 4 way stop by building 90509 onto Simpson Ave. Turn right onto Cody Ave. Turn left onto Hwy. 98. Turn left onto Eglin Pkwy. Turn right onto Hatchee Rd. Turn right onto Boatner Rd.

**\*\*EGLIN AFB DOES HAVE AN EMERGENCY ROOM**

### DENTAL FACILITIES

#### **Hurlburt Field Dental Clinic**

113 Lielmanis Ave., Bldg. 91020

Hurlburt Field, FL 32544-5600

(850) 881-1020

**Driving Directions:** Dental Clinic is located in the same building with the Medical Treatment Facility. Go straight through 4 way stop by building 90509 onto Simpson Ave. Turn right onto Cody Ave. Turn left onto Independence Ave. Turn right onto Lielmanis Ave.

---

## **BASE FACILITIES (Cont.)**

### **Personal Care Family Dentistry**

348 SW Miracle Strip Pkwy., Suite 15-A  
Fort Walton Beach, FL 32548  
(850) 244-5005

**Driving Directions:** Go straight through four way stop by building 90509 onto Simpson Ave. Turn right at onto Cody Ave. (2<sup>nd</sup> right). Turn left onto Hwy. 98. Office in on right hand side of road just past Wright Pkwy.

---

## ON-BASE DINING INFORMATION

### 1st SOFSS DINING FACILITIES

**The BISTRO**

100 Bartley St., Bldg. 1  
(850) 884-1920

**Oasis Café (Gator Lakes Golf Course)**

403 Walkup Way, Bldg. 91300  
(850) 881-5731

**Spartetime Grill (Bowling Center)**

442 Cody Ave., Bldg. 90231  
(850) 884-6470

**Velocity Café/Kraken Kafé**

437 Tully St., Bldg. 90228  
(850) 884-7365/4045

**Better Bodies**

(850) 581-0074/0081

**The Hooch Restaurant & Bar (Soundside Club “dinner only”)**

107 Kissam St., Bldg. 90910  
(850) 884-7507 (850) 884-7365

### Military Dining Facilities

**The Reef**

313 Cody Ave., Bldg. 90326  
(850) 884-4970

**The Riptide**

150 Howie Walters Rd., Bldg. 91007  
(850) 881-5127/5128

*For the most up-to-date- information visit [www.myhurlburt.com](http://www.myhurlburt.com)*

### THE EXCHANGE & OTHER DINING FACILITIES

**Burger King**

415 Tully St., Bldg. 90226,  
(850) 581-9111

**Military Clothing/Alterations**

112 Lielmanis Ave., Bldg. 91012  
(850) 884-7395

**The Exchange Food Court**

112 Lielmanis Ave., Bldg. 91012  
(850) 581-6008

- ❖ Charleys
- ❖ Popeyes
- ❖ Starbucks
- ❖ Subway

---

## OFF-BASE DINING INFORMATION

Listed below are a few of the many offerings of local flavor—you are encouraged to get out & discover what the Emerald Coast has to offer—  
*(This listing is not an endorsement by Commando Inn or any base agency)*

### AMERICAN

- ❖ **Golden Corral**, 414 Mary Esther Blvd. NW, Fort Walton Beach, (850) 244-6644
- ❖ **Buffalo Wings & Rings**, 402 Mary Esther Blvd., Fort Walton Beach, (850) 737-2300
- ❖ **Kinfolks BBQ**, 333 Racetrack Rd. NW, Fort Walton Beach, (850) 863-5166
- ❖ **Mangos**, 200 Eglin Pkwy. NE, Fort Walton Beach, (850) 864-1127

### ASIAN CUISINE

- ❖ **Nellies Lumpia** (Filipino Buffet), 202 Ferry Rd. SE, Fort Walton Beach, (850) 226-3202
- ❖ **Okki Dokki Korean**, 74 Beal Pkwy. NE, Fort Walton Beach, (850) 244-3344
- ❖ **Ocean Buffet** 309 Miracle Strip Pkwy. SW, Fort Walton Beach, (850) 833-3026
- ❖ **Okinawa Japanese Steakhouse** 180 Eglin Pkwy. NE, Fort Walton, (850) 244-0055
- ❖ **Thai Noodle Place**, 1360 W Hwy 98, Mary Esther, (850) 200-4415

### FAST FOOD

- ❖ **McDonalds** 440 Mary Esther Blvd., Mary Esther, (850) 244-2224
- ❖ **Burger King** 201 Mary Esther Cut Off NW, Mary Esther, (850) 243-1824
- ❖ **KFC**, 500 Mary Esther Cutoff, Fort Walton Beach, (850) 243-5700
- ❖ **Wendy's**, 145 Eglin Pkwy. NE, Fort Walton Beach, (850) 243-5048
- ❖ **Waffle House**, 2060 U.S. 98, Mary Esther, (850) 581-5815

### ITALIAN

- ❖ **Clemenza's at Uptown Station** 75 Eglin Pkwy. NE #126, Fort Walton Beach, (850) 243-0707
- ❖ **Olive Garden**, 216 Miracle Strip Pkwy., Fort Walton Beach, (850) 244-1667

### MEXICAN

- ❖ **Sabor A Mexico**, 13 Eglin Pkwy. SE, Fort Walton Beach, (850) 243-3331
- ❖ **Burrito Del Sol**, 201 Miracle Strip Pkwy. SE, Fort Walton Beach, (850) 226-8016
- ❖ **Tijuana Flats** 39 Eglin Pkwy. NE, Fort Walton Beach, (850) 301-0002
- ❖ **El Paso**, 480 Mary Esther Blvd., Mary Esther, (850) 796-4300

### PIZZA

- ❖ **NYPD Pizza**, 8207 Navarre Pkwy., Navarre, (850) 710-3370

---

## OFF-BASE DINING INFORMATION (CONT.)

Listed below are a few of the many offerings of local flavor—you are encouraged to get out & discover what the Emerald Coast has to offer—

*(This listing is not an endorsement by Commando Inn or any base agency)*

### STEAK HOUSES

- ❖ **Longhorn Steak House** 544 Mary Esther Cut-Off NW, Fort Walton Beach, (850) 315-1020
- ❖ **Ruth Chris**, 15000 Emerald Coast Pkwy, Destin, (850) 837-7884

### SEAFOOD

- ❖ **Red Lobster**, 326 Miracle Strip Pkwy., Fort Walton Beach (850) 664-2700
- ❖ **Crabtrap**, 1450 Miracle Strip Pkwy., Fort Walton Beach, (850) 301-0959
- ❖ **Joe's Crabshack** 14055 Emerald Coast Pkwy., Destin, (850) 650-1882
- ❖ **Bubba Gump's** 14059 Emerald Coast Pkwy., Destin, (850) 650-1881
- ❖ **The Back Porch**, 1740 Scenic Highway 98, (850) 837-2022



# Hurlburt Field Map



Map created by 1st SOFSS Marketing and intended for personal use. Commercial use must have written approval from 1st SOFSS Marketing. Current as of: January 2022. Subject to change without notice. Not built to scale.



## DIRECTORY

### — Hurlburt Field West Side —

1. Outdoor Recreation Marina (ODR) & Kraken Tiki Bar
2. Dog Park (Bark Park), Fishing Pier
3. The Soundside; The Hooch Bar & Grill || Soundside Lodging (Open to DoD Cardholders)
4. Picnic Area
5. Visitor Control Center
6. Footbridge (temporarily closed)
7. Child Development Center (CDC) West
8. Child Development Center (CDC) Main
9. Lil' Commando Community Park Splash Pad, Skateboard Park, Ball Fields
10. Memorial Air Park

11. Housing Office
12. Youth Programs
13. Base Pool (Aquatic Center) (temporarily closed)
14. 1st SOFSS Headquarters; Readiness; NAF HRO NAF Accounting; Marketing; Print Shop
15. Okaloosa County Tax Office (temporarily closed); Airman's Attic; Thrift Store
16. Airman & Family Readiness Center (A&FRC)
17. Finance; IDs; CACs; Passports; Assignments; Promotions; Awards & Decs; Evaluations; Career Development; Legal; Retirement/Separation; Retiree Activities Office (RAO)
18. Base Chapel
19. Hurlburt Express ||; Gas Station; ATM
20. Reef Military Dining Facility (DFAC) ||
21. King Auditorium
22. Airman Leadership School (ALS)
23. Education Center

24. Welcome Center
25. Information, Tickets & Travel (ITT)
26. Community Commons - Library; Community Center; RAR Single Airmen Program; Velocity Café; Kraken Café ||
27. Official Mail Center
28. Burger King ||
29. Hurlburt Lanes; Sparetime Grill ||
30. Commando Fitness Center; Smoothie Bar ||; HAWC
31. Pet Friendly Temporary Lodging Facility
32. Pet Friendly Distinguished Visitors Quarters (DVQ)
33. Pet Friendly Temporary Lodging Facility
34. Commando Inn (Lodging); Family Child Care Office
35. Adersholt Fitness Center; Commando Fit Pad West
36. Auto Hobby; Plaque & Trophy Shop
37. Rifle & Pistol Club
51. May Road Office

**STAY CONNECTED!**

**WEBSITE**  
www.myhurlburt.com

**SMS TEXT**  
text "1SOFSSFOCUS" to 95577

**FACEBOOK**  
Hurlburt Force Support or facebook.com/myhurlburt

**NEWSLETTER**  
myhurlburt.com

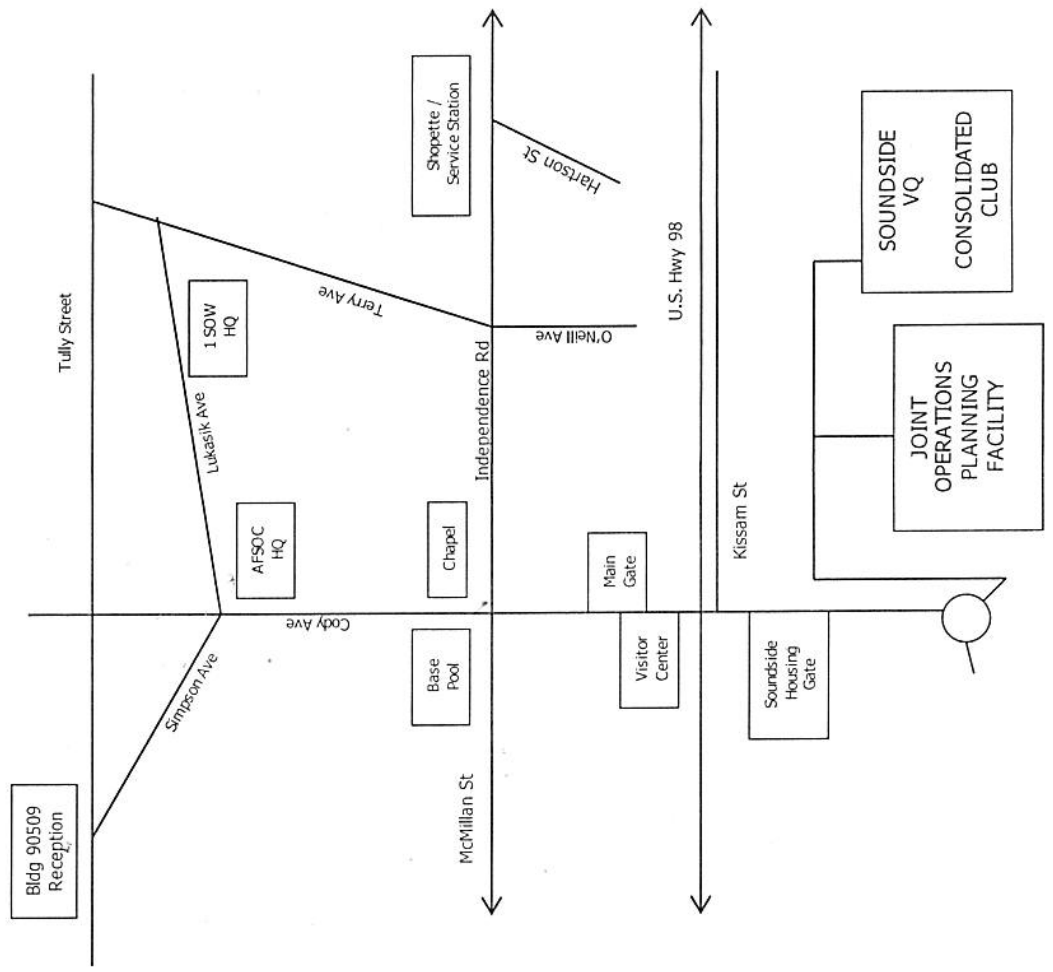
### — Hurlburt Field East Side —

38. Eglin Federal Credit Union (EFCU)
39. First National Bank
40. Tennis & Roller Hockey Courts, Commando FIR Pad East
41. The Exchange (BX) Charleys; Popeyes; Starbucks; Subway ||
42. Commissary ||
43. Resale Lot
44. Riptide Military Dining Facility (DFAC) || Fitness Center
45. Child Development Center (CDC) East
46. Medical Clinic & Pharmacy (MDG)
47. Recycling Center
49. Gator Lakes Golf Course; Oasis Café ||
50. FANCamp - Off MLK Jr. Blvd.



# FACILITY DIRECTORY

## SOUNDSSIDE VISITING QUARTERS (BUILDING 90918)



**F I R S T F L O O R**

No Re-Entry →	8120	8121	8122	8124	8126	8128	8130	8132	8134	8135																										
	<table border="1" style="width: 100%; border-collapse: collapse;"> <tr> <td style="width: 5%;">Stairs</td> <td style="width: 5%;">8118</td> <td style="width: 5%;">8116</td> <td style="width: 5%;">8114</td> <td style="width: 5%;">8112</td> <td style="width: 5%;">8110</td> <td style="width: 5%;">8108</td> <td style="width: 5%;">8106</td> <td style="width: 5%;">8104</td> <td style="width: 5%;">8102</td> <td style="width: 5%;">Business Off</td> <td style="width: 5%;">Admin</td> <td style="width: 5%;">Reception/ Sundries</td> </tr> <tr> <td style="width: 5%;">Fitness Rm</td> <td style="width: 5%;">8118</td> <td style="width: 5%;">8117</td> <td style="width: 5%;">8115</td> <td style="width: 5%;">8113</td> <td style="width: 5%;">8111</td> <td style="width: 5%;">8109</td> <td style="width: 5%;">8107</td> <td style="width: 5%;">8105</td> <td style="width: 5%;">8103</td> <td style="width: 5%;">8101</td> <td style="width: 5%;">ATM</td> <td></td> </tr> </table>										Stairs	8118	8116	8114	8112	8110	8108	8106	8104	8102	Business Off	Admin	Reception/ Sundries	Fitness Rm	8118	8117	8115	8113	8111	8109	8107	8105	8103	8101	ATM	
Stairs	8118	8116	8114	8112	8110	8108	8106	8104	8102	Business Off	Admin	Reception/ Sundries																								
Fitness Rm	8118	8117	8115	8113	8111	8109	8107	8105	8103	8101	ATM																									
	<table border="1" style="width: 100%; border-collapse: collapse;"> <tr> <td style="width: 5%;">8123*</td> <td style="width: 5%;">8125</td> <td style="width: 5%;">8127</td> <td style="width: 5%;">8129</td> <td style="width: 5%;">8131</td> <td style="width: 5%;">8133*</td> <td style="width: 5%;">8137</td> <td style="width: 5%;">8138</td> <td style="width: 5%;">8140</td> <td style="width: 5%;">8142</td> <td style="width: 5%;">8144</td> <td style="width: 5%;">8146</td> <td style="width: 5%;">8148</td> <td style="width: 5%;">8150</td> <td style="width: 5%;">8152</td> <td style="width: 5%;">8154</td> <td style="width: 5%;">Stairs</td> </tr> </table>										8123*	8125	8127	8129	8131	8133*	8137	8138	8140	8142	8144	8146	8148	8150	8152	8154	Stairs									
8123*	8125	8127	8129	8131	8133*	8137	8138	8140	8142	8144	8146	8148	8150	8152	8154	Stairs																				
	<table border="1" style="width: 100%; border-collapse: collapse;"> <tr> <td style="width: 5%;">Ice - Elevator</td> <td style="width: 5%;">8133*</td> <td style="width: 5%;">8135</td> <td style="width: 5%;">8137</td> <td style="width: 5%;">8139</td> <td style="width: 5%;">8141</td> <td style="width: 5%;">8143</td> <td style="width: 5%;">8145</td> <td style="width: 5%;">8147</td> <td style="width: 5%;">8149</td> <td style="width: 5%;">8151</td> <td style="width: 5%;">8153</td> <td style="width: 5%;">8155</td> </tr> </table>										Ice - Elevator	8133*	8135	8137	8139	8141	8143	8145	8147	8149	8151	8153	8155													
Ice - Elevator	8133*	8135	8137	8139	8141	8143	8145	8147	8149	8151	8153	8155																								
	<table border="1" style="width: 100%; border-collapse: collapse;"> <tr> <td style="width: 5%;">H'Keeping</td> <td style="width: 5%;">8137</td> <td style="width: 5%;">8138</td> <td style="width: 5%;">8140</td> <td style="width: 5%;">8142</td> <td style="width: 5%;">8144</td> <td style="width: 5%;">8146</td> <td style="width: 5%;">8148</td> <td style="width: 5%;">8150</td> <td style="width: 5%;">8152</td> <td style="width: 5%;">8154</td> <td style="width: 5%;">Stairs</td> </tr> </table>										H'Keeping	8137	8138	8140	8142	8144	8146	8148	8150	8152	8154	Stairs														
H'Keeping	8137	8138	8140	8142	8144	8146	8148	8150	8152	8154	Stairs																									
	<table border="1" style="width: 100%; border-collapse: collapse;"> <tr> <td style="width: 5%;">Guest Laundry</td> <td style="width: 5%;">8139</td> <td style="width: 5%;">8141</td> <td style="width: 5%;">8143</td> <td style="width: 5%;">8145</td> <td style="width: 5%;">8147</td> <td style="width: 5%;">8149</td> <td style="width: 5%;">8151</td> <td style="width: 5%;">8153</td> <td style="width: 5%;">8155</td> </tr> </table>										Guest Laundry	8139	8141	8143	8145	8147	8149	8151	8153	8155																
Guest Laundry	8139	8141	8143	8145	8147	8149	8151	8153	8155																											
	<table border="1" style="width: 100%; border-collapse: collapse;"> <tr> <td style="width: 5%;">No Re-entry ↙</td> <td style="width: 5%;">8137</td> <td style="width: 5%;">8138</td> <td style="width: 5%;">8140</td> <td style="width: 5%;">8142</td> <td style="width: 5%;">8144</td> <td style="width: 5%;">8146</td> <td style="width: 5%;">8148</td> <td style="width: 5%;">8150</td> <td style="width: 5%;">8152</td> <td style="width: 5%;">8154</td> <td style="width: 5%;">Stairs</td> </tr> </table>										No Re-entry ↙	8137	8138	8140	8142	8144	8146	8148	8150	8152	8154	Stairs														
No Re-entry ↙	8137	8138	8140	8142	8144	8146	8148	8150	8152	8154	Stairs																									

Elevator

**S E C O N D F L O O R**

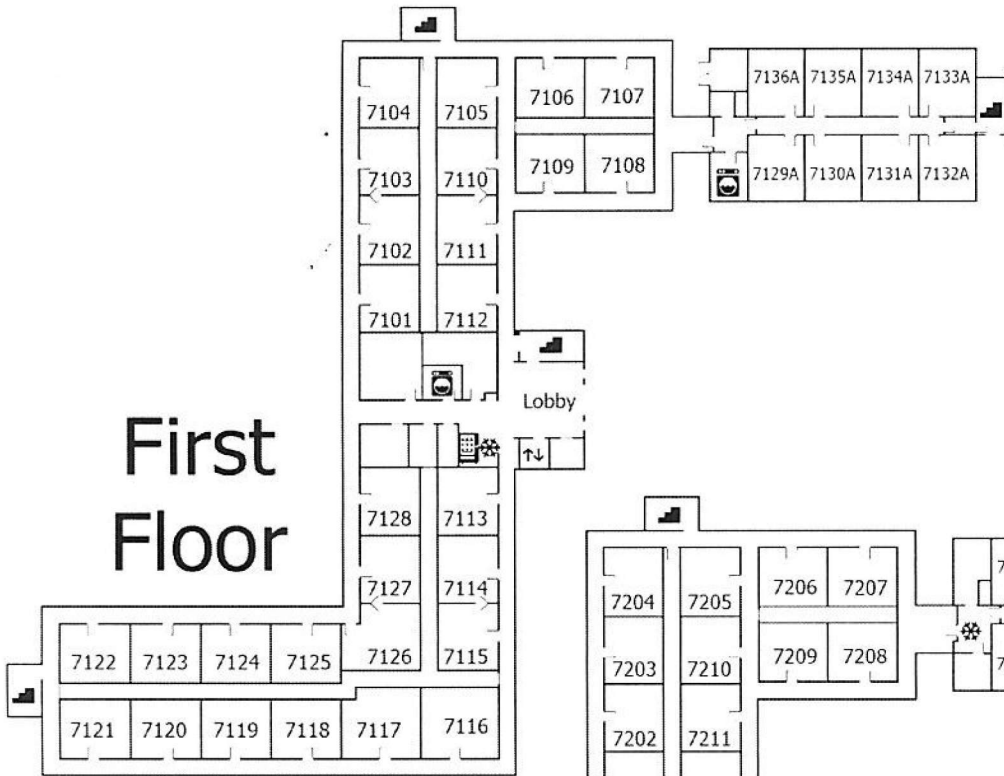
8223	8224	8226	8228	8230	8232	8234	8236	8237	8238												
<table border="1" style="width: 100%; border-collapse: collapse;"> <tr> <td style="width: 5%;">Stairs</td> <td style="width: 5%;">8221</td> <td style="width: 5%;">8220</td> <td style="width: 5%;">8218</td> <td style="width: 5%;">8216</td> <td style="width: 5%;">8214</td> <td style="width: 5%;">8212</td> <td style="width: 5%;">8210</td> <td style="width: 5%;">8208</td> <td style="width: 5%;">8206</td> <td style="width: 5%;">8204</td> <td style="width: 5%;">8202</td> </tr> </table>										Stairs	8221	8220	8218	8216	8214	8212	8210	8208	8206	8204	8202
Stairs	8221	8220	8218	8216	8214	8212	8210	8208	8206	8204	8202										
<table border="1" style="width: 100%; border-collapse: collapse;"> <tr> <td style="width: 5%;">Electrical/ Telecom</td> <td style="width: 5%;">8225*</td> <td style="width: 5%;">8227</td> <td style="width: 5%;">8229</td> <td style="width: 5%;">8231</td> <td style="width: 5%;">8233</td> <td style="width: 5%;">8235*</td> <td style="width: 5%;">8237</td> <td style="width: 5%;">8238</td> </tr> </table>										Electrical/ Telecom	8225*	8227	8229	8231	8233	8235*	8237	8238			
Electrical/ Telecom	8225*	8227	8229	8231	8233	8235*	8237	8238													
<table border="1" style="width: 100%; border-collapse: collapse;"> <tr> <td style="width: 5%;">H'Keeping</td> <td style="width: 5%;">8240</td> <td style="width: 5%;">8241</td> <td style="width: 5%;">8242</td> <td style="width: 5%;">8244</td> <td style="width: 5%;">8246</td> <td style="width: 5%;">8248</td> <td style="width: 5%;">8250</td> <td style="width: 5%;">8252</td> <td style="width: 5%;">8254</td> <td style="width: 5%;">8256</td> <td style="width: 5%;">Stairs</td> </tr> </table>										H'Keeping	8240	8241	8242	8244	8246	8248	8250	8252	8254	8256	Stairs
H'Keeping	8240	8241	8242	8244	8246	8248	8250	8252	8254	8256	Stairs										
<table border="1" style="width: 100%; border-collapse: collapse;"> <tr> <td style="width: 5%;">Ice - Elevator</td> <td style="width: 5%;">8243</td> <td style="width: 5%;">8245</td> <td style="width: 5%;">8247</td> <td style="width: 5%;">8249</td> <td style="width: 5%;">8251</td> <td style="width: 5%;">8253</td> <td style="width: 5%;">8255</td> <td style="width: 5%;">8257</td> <td style="width: 5%;">8258</td> <td style="width: 5%;">8259*</td> <td style="width: 5%;">Mechanical</td> </tr> </table>										Ice - Elevator	8243	8245	8247	8249	8251	8253	8255	8257	8258	8259*	Mechanical
Ice - Elevator	8243	8245	8247	8249	8251	8253	8255	8257	8258	8259*	Mechanical										
<table border="1" style="width: 100%; border-collapse: collapse;"> <tr> <td style="width: 5%;">H'Keeping</td> <td style="width: 5%;">8243</td> <td style="width: 5%;">8245</td> <td style="width: 5%;">8247</td> <td style="width: 5%;">8249</td> <td style="width: 5%;">8251</td> <td style="width: 5%;">8253</td> <td style="width: 5%;">8255</td> <td style="width: 5%;">8257</td> <td style="width: 5%;">8258</td> <td style="width: 5%;">8259*</td> </tr> </table>										H'Keeping	8243	8245	8247	8249	8251	8253	8255	8257	8258	8259*	
H'Keeping	8243	8245	8247	8249	8251	8253	8255	8257	8258	8259*											
<table border="1" style="width: 100%; border-collapse: collapse;"> <tr> <td style="width: 5%;">Guest Laundry</td> <td style="width: 5%;">8243</td> <td style="width: 5%;">8245</td> <td style="width: 5%;">8247</td> <td style="width: 5%;">8249</td> <td style="width: 5%;">8251</td> <td style="width: 5%;">8253</td> <td style="width: 5%;">8255</td> <td style="width: 5%;">8257</td> <td style="width: 5%;">8258</td> <td style="width: 5%;">8259*</td> </tr> </table>										Guest Laundry	8243	8245	8247	8249	8251	8253	8255	8257	8258	8259*	
Guest Laundry	8243	8245	8247	8249	8251	8253	8255	8257	8258	8259*											
<table border="1" style="width: 100%; border-collapse: collapse;"> <tr> <td style="width: 5%;">Stairs</td> <td style="width: 5%;">8241</td> <td style="width: 5%;">8242</td> <td style="width: 5%;">8244</td> <td style="width: 5%;">8246</td> <td style="width: 5%;">8248</td> <td style="width: 5%;">8250</td> <td style="width: 5%;">8252</td> <td style="width: 5%;">8254</td> <td style="width: 5%;">8256</td> <td style="width: 5%;">Stairs</td> </tr> </table>										Stairs	8241	8242	8244	8246	8248	8250	8252	8254	8256	Stairs	
Stairs	8241	8242	8244	8246	8248	8250	8252	8254	8256	Stairs											

Elevator

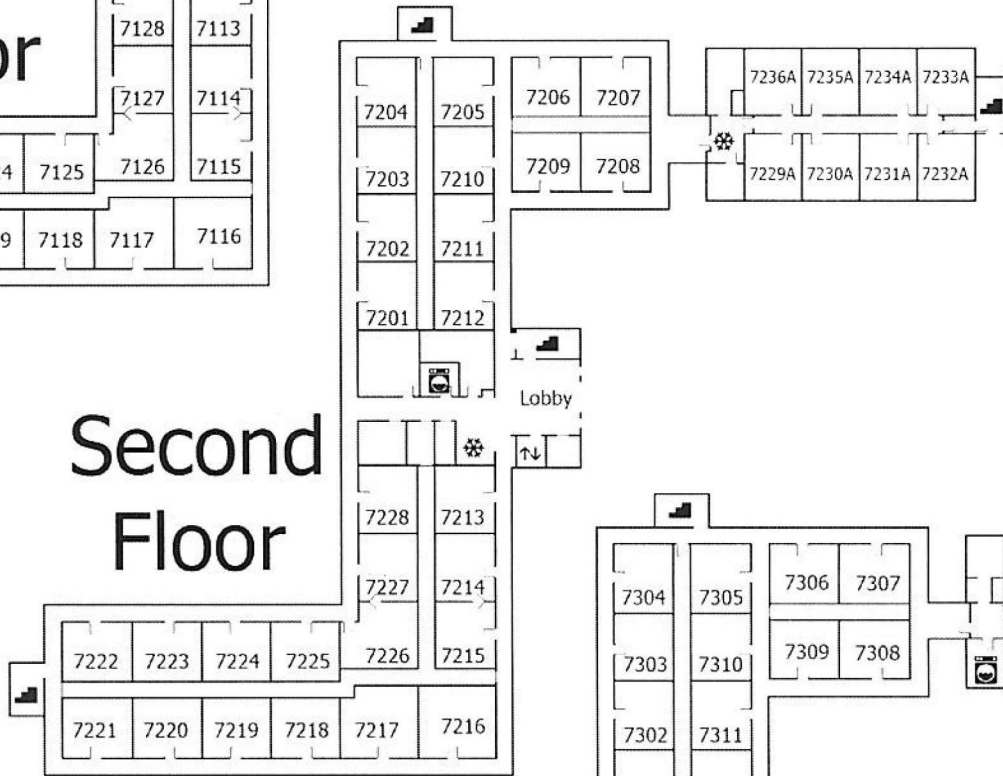
\* - Denotes "Accessible" Rooms



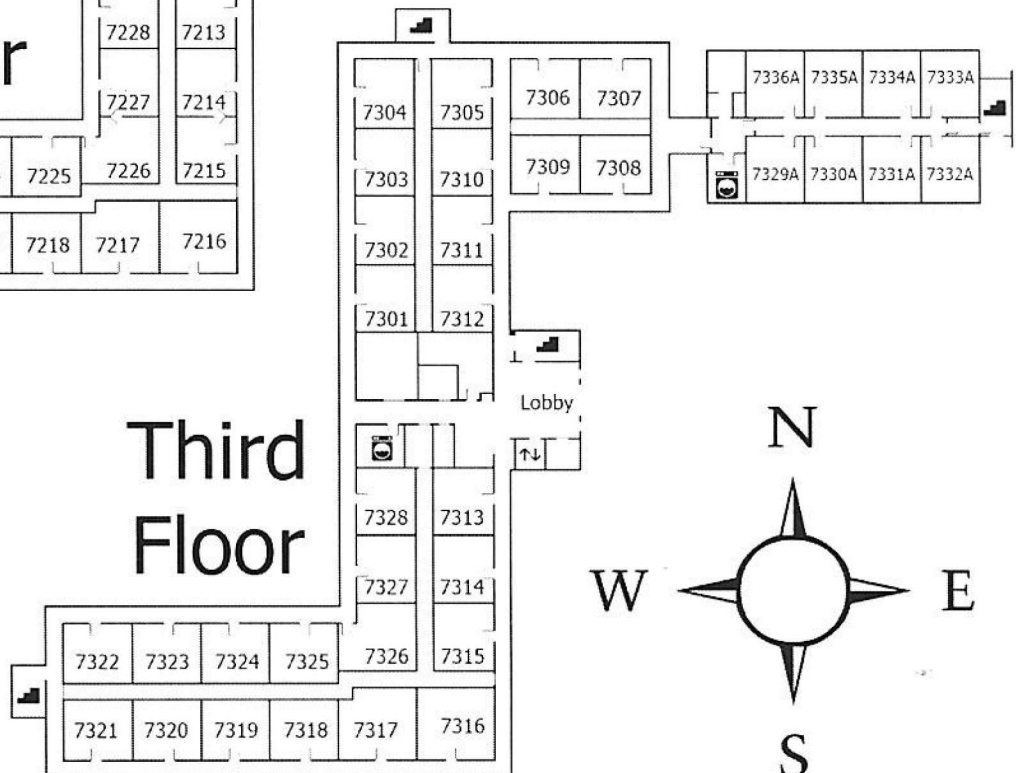
## First Floor



## Second Floor

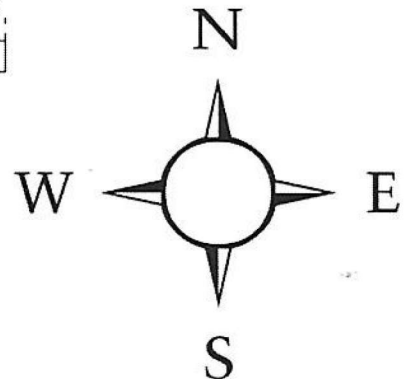


## Third Floor



### LEGEND

-  Laundry
-  Vending Machines
-  Elevators
-  Stairs
-  Ice Machine







Building 90341  
2 Bedroom TLF

*\*Keys are required for all entrances*

Parking

Parking

Parking

Parking

Entrance*		Entrance*		Entrance*	
3108	3106	H		3104 Pet Friendly	3102 Pet Friendly
3107	3105 H	Entrance*		3103 Pet Friendly	3101 Pet Friendly

Tully Street

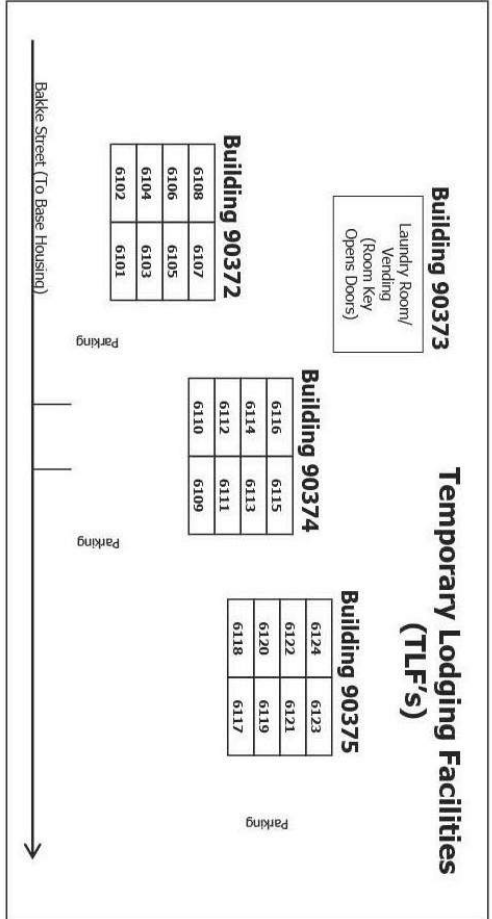
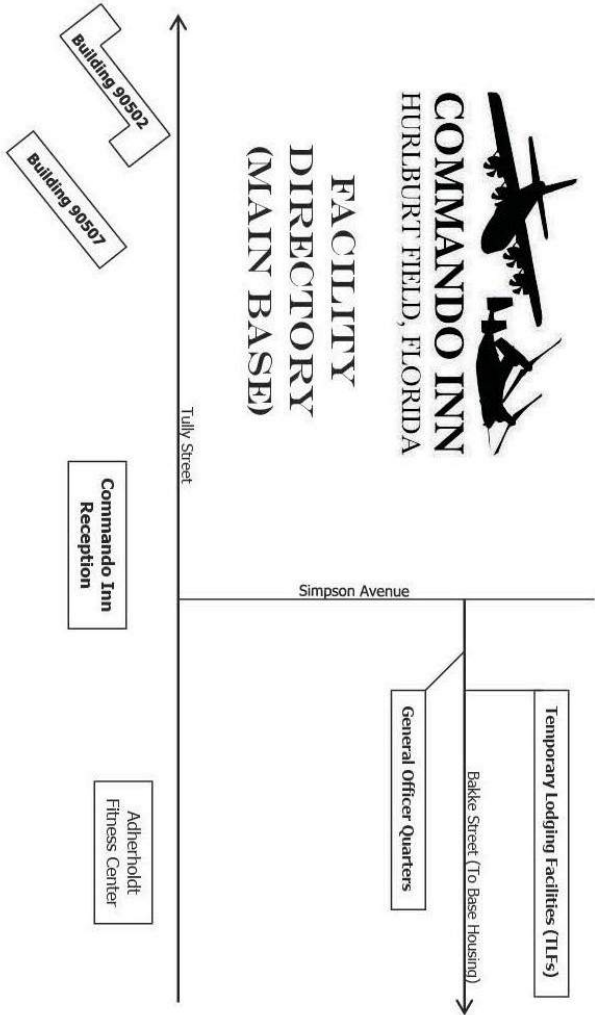
Commando Inn Office  
301 Tully St. bid 90309  
Open 24 hrs

Aderholt Gym



**COMMANDO INN**  
HURLBURT FIELD, FLORIDA

**FACILITY  
DIRECTORY  
(MAIN BASE)**



**Temporary Lodging Facilities (TLF's)**

**Building 90373**

Laundry Room/  
Vending  
(Room Key/  
Opens Doors)

**Building 90372**

6108	6107
6106	6105
6104	6103
6102	6101

**Building 90374**

6116	6115
6114	6113
6112	6111
6110	6109

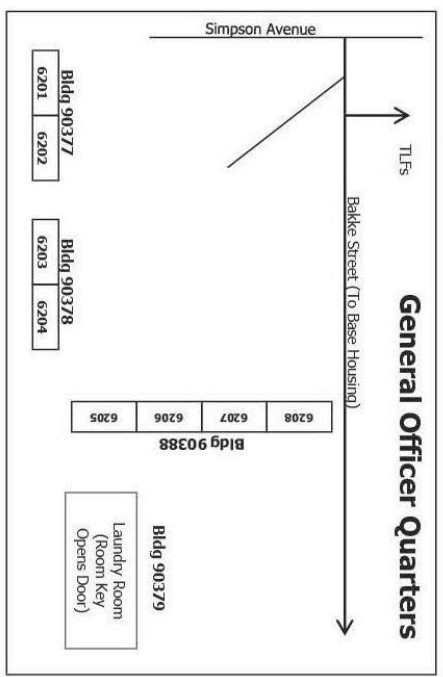
**Building 90375**

6124	6123
6122	6121
6120	6119
6118	6117



**The Air Force Inns Promise**

"Ensuring our guests have a clean, comfortable room to guarantee a good nights rest and pleasant stay is our goal. If any part of your stay with us is not satisfactory, please just let the general manager or front desk staff know so they can try to 'make it right'."



**General Officer Quarters**

TLFs

Simpson Avenue

Bldg 90377  
6201 | 6202

Bldg 90378  
6203 | 6204

Bldg 90388  
6208 | 6207 | 6206 | 6205

Bldg 90379  
Laundry Room  
(Room Key  
Opens Door)

---

## AREA ATTRACTIONS

### DESTIN

- ❖ Crystal Sands Beach (across from Destin Commons) on Emerald Coast Pkwy.
- ❖ Henderson State Park, 1700 Emerald Coast Pkwy., (850) 837-7550
- ❖ Destin Harbor Walk Village, 10 Harbor Dr., (850) 591-4868
- ❖ Kelly Plantation Golf Club, 307 Kelly Plantation Dr., (850) 267-8000
- ❖ Sandestin Golf Resort, 9300 Emerald Coast Pkwy., (850) 267-8211
- ❖ Destin History and Fishing Museum, 108 Stahlman Ave., (850) 651-7131
- ❖ Big Kahuna's Water and Adventure Park (seasonal), 1007 US Hwy 98 E, (850) 837-8319
- ❖ Regatta Bay Golf and Country Club, 300 Regatta Bay Blvd., (850) 337-8080
- ❖ Indian Bayou Golf Club, 1 County Club Dr. E, (850) 837-6192

### FORT WALTON BEACH

- ❖ Emerald Coast Science Center for Kids, 31 Memorial Pkwy. SW, Fort Walton Beach, (850) 664-1261
- ❖ Gulfarium located on 1010 Miracle Strip Pkwy. ¼ mile east of the Brooks Bridge on Okaloosa Island, (850) 243-9046
- ❖ Air Force Armament Museum located at 100 Museum Dr., Eglin AFB, (850) 880-4062
- ❖ Goofy Golf is located at 401 North Eglin Pkwy., (850) 862-4922
- ❖ Indian Temple Mound Museum, 139 Miracle Strip Pkwy., Fort Walton Beach, (850) 833-9595

### GULF BREEZE

- ❖ Gulf Breeze Zoo, 5701 Gulf Breeze Pkwy., Gulf Breeze, (850) 932-2229

### MILTON

- ❖ Blackwater River State Park, 7720 Deaton Bridge Rd., Holt, (850) 983-5363
- ❖ Adventures Unlimited Outdoor Center, 8974 Tomahawk Landing Rd., (850) 623-6197
- ❖ Blackwater Heritage State Trail starts on 5533 Alabama St., (850) 983-5338
- ❖ West Florida Railroad Museum, 5003 Henry St., (850) 623-3645
- ❖ Southern Raceway, 9359 Nichols Lake Rd., (850) 623-2333

### PENSACOLA

- ❖ Pensacola Beach is located on Santa Rosa Island
- ❖ Johnson Beach, 13333 Johnson Beach Rd., Gulf Islands National Seashore, (850) 934-2600
- ❖ National Aviation Museum, 1750 Radford Blvd., NAS Pensacola, (850) 452-2894/3296
- ❖ Blue Wahoos Ballpark, Pensacola, 351 W Cedar St., (850) 934-8444
- ❖ Pensacola Light House, 2081 Radford Blvd., NAS Pensacola, (850) 393-1561
- ❖ Fast Eddies Fun Center, 505 Michigan Ave., (850) 433-7735

---

## AREA ATTRACTIONS (CONT.)

### TALLAHASSEE

- ❖ Tallahassee Museum of History and Natural Science, 3945 Museum Dr., (850) 575-8684
- ❖ St. Marks National Wildlife Refuge, 1255 Lighthouse Rd., St. Marks, (850) 925-6121
- ❖ Museum of Florida History, 500 S. Bronough St., (850) 245-6400
- ❖ Mission San Luis de Apalachee, 2100 W. Tennessee St., (850) 245-6406
- ❖ Alfred B. Maclay Gardens and State Park, 3540 Thomasville Rd., (850) 487-4556
- ❖ Goodwood Museum and Gardens located, 1600 Miccosukee Rd., (850) 877-4202

### ORLANDO

- ❖ Disney World located on World Dr., (407) 939-7679
- ❖ Around the World at Epcot located on West Buena Vista Dr., Walt Disney World, (407) 939-8687
- ❖ Universal's Islands of Adventure, 6000 Universal Blvd., (407) 363-8000
- ❖ Discovery Cove, 6000 Discovery Cove Way, (407) 513-4600

---

## AREA ATTRACTIONS (CONT.)

### NEARBY CASINOS

**Beau Rivage Casino and Resort**

875 Beach Blvd.  
Biloxi, MS  
(228) 386-7111

**Hard Rock Biloxi**

777 Beach Blvd.  
Biloxi, MS  
(228) 374-7625

**Harrah's Gulf Coast**

**Hotel & Casino**  
280 Beach Blvd.  
Biloxi, MS  
(800) 946-2946

**Golden Nugget**

151 Beach Blvd.  
Biloxi, MS  
(228) 435-5400

**Margaritaville Casino**

160 5<sup>th</sup> St.  
Biloxi, MS  
(228) 271-6377

**Wind Creek Atmore**

303 Poarch Rd.  
Atmore, AL  
(866) 946-3360

### SHOPPING

**Santa Rosa Mall**

300 Mary Esther Blvd.  
Mary Esther  
(850) 243-0073

A single-level mall anchored by Sears and JC Penney

**Destin Commons**

4300 Legendary Dr.  
Destin  
(850) 337-8700

Located east of Hurlburt Field in Destin, just off of Hwy 98

**Silver Sands Premium Outlets**

10562 Emerald Coast Pkwy.  
Destin  
(850) 654-9771

Experience the ultimate in designer choices; just off of Hwy 98 east of the Destin Commons

**Cordova Mall**

5100 N 9<sup>th</sup> Ave.  
Pensacola  
(850) 477-5355

Shopping for everyone, located near the Pensacola Regional Airport





# TELEVISION & RADIO

## TELEVISION INFORMATION/CABLE CHANNEL GUIDE

3 - Channel Guide	25 - REELZ	47 - Galavision	69 - BET
4 - Commander Channel	26 - Lifetime	48 - CNN	70 - VH1
5 - CBS/WKRG	27 - Ovation	49 - CNN Headline News	71 - CMT
6 - NBC/WPMI	28 - Bravo	50 - FOX News	72 - Paramount
7 - CW/WFNA	29 - A&E	51 - C-SPAN	73 - SYFY
8 - MNT/WFGX	30 - FX	52 - C-SPAN 2	74 - EI Entertainment
9 - PBS/WEIQ	31 - BBC America	53 - INSP	75 - Comedy Central
10 - FOX/WALA	32 - TLC	54 - MSNBC	76 - AMC
11 - ION	33 - TBS	55 - CNBC	77 - Hallmark Movies
12 - ABC/WEAR	34 - TNT	56 - ACCU-Weather	78 - Turner Classics
13 - Cartoon Network	35 - USA Network	57 - ESPN	
14 - Nickelodeon East	36 - Animal Planet	58 - ESPN 2	
15 - Teen Nick	37 - NASA	59 - ESPNEWS	
16 - Nickelodeon West	38 - Discovery	60 - ESPNU	
17 - Baby First TV	39 - National Geographic	61 - Big Ten Network	
18 - Disney Junior\	40 - Motor Trend	62 - FOX Sports 1	
19 - Disney Channel	41 - History Channel	63 - Pursuit Channel	
20 - Disney XD	42 - ID	64 - AXS	
21 - Freeform	43 - TRU TV	65 - FXX	
22 - TV Land	44 - Food Network	66 - LINK	
23 - RFD TV	45 - HGTV	67 - MTV	
24 - Hallmark Channel	46 - Univision	68 - MTV2	

## RADIO DIRECTORY

FM	FM	AM
88.1 - WUWF - Classical, Jazz	99.0 - WKSM - 99 Rock	1050 - WJSB - Country
89.1 - WFSW - Hits	99.9 - The MIX - 80's, 90's, Now	1120 - WNWF - News, Talk
89.5 - WPAP - Rejoice	100.7 - WJLQ - Top 40	1260 - WFTW - News, Talk
90.1 - WTJT - Christian	101.5 - WTKX - Rock	1280 - WGTX - 60's, 70's, 80's
90.5 - WTGF - Christian	102.1 - WMAV - Classic Rock	1340 - WFSH - News, Talk
91.7 - WEGS - Christian	102.7 - WXBM - Country	1400 - WFAV - Nostalgia
92.1 - WMMK - Rock	103.1 - WMXZ - Top 40	
92.9 - WBLK - Urban, Rap	103.9 - WWEO - Christian	
93.3 - COAST - 80's, 90's, Today	104.1 - WGCX - Country	
96.5 - Z-96 - Top 40	104.7 - WAAZ - Countries	
98.1 - WHWY - Country	105.5 - NASH - Country	

## **TRANSPORTATION**

### **BASE TRANSPORTATION**

(850) 884-6171

### **CAR RENTAL AGENCIES:**

#### **Budget Car Rental**

300 Mary Ester Blvd.

Mary Ester, FL

(850) 301-0468

#### **Hertz Rent a Car**

112 Howie Walters Rd.

Hurlburt Field, FL

(850) 581-2244

### **TAXI SERVICES:**

#### **Advantage Taxis and Cab Service**

Fort. Walton Beach, FL

(850) 420-7807

#### **A1 Shuttle and Taxi Service**

Defuniak Springs, FL

(850) 685-6706

#### **Destin Shuttle and Taxi Service**

Destin, FL

(850) 585-7227

#### **Ranger 34**

Fort Walton Beach, FL

(850) 830-1513

#### **Turner's Airport Shuttle**

Fort Walton Beach, FL

(850) 225-9663

#### **Lowell Asbell Airport Shuttle**

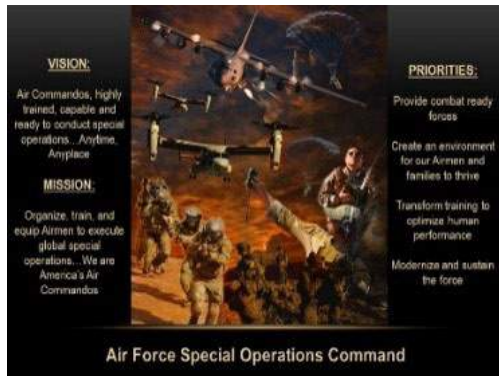
Fort Walton Beach, FL

(850) 830-7448



## HISTORY

Hurlburt Field, Fla., is home to the Air Force Special Operations Command and the 1st Special Operations Wing and has a long and distinctive history. Hurlburt Field was originally designated as Auxiliary Field No. 9, one of the original small pilot and gunnery training fields built on the sprawling Eglin Air Force Base complex in the 1940s.



The 1st Air Commando Group was created March 29, 1944 in India, where the air commandos won historical fame by providing fighter cover, air strikes, and airlift for "Wingate's Raiders," who were operating behind enemy lines in Burma. It was over Burma's jungles that the air commandos, called "Burma Bridge Busters," earned their reputation as unorthodox air fighters.

During 1943, American C-47s and British Dakotas of Transport Command formed an aerial lifeline to Wingate's Raiders that was never broken. Food, ammunition, clothing and medical supplies were dropped by parachute from 200 feet during the day and 400 feet during the night.

Wingate's successful 1943 campaign promoted further efforts of the same unconventional nature. The 1st Air Commando Group, U.S. Army Air Force, was formed to spearhead General Wingate's operations. The group's inventory reflected as odd an assortment of hardware as could be imagined. It boasted C-47 transports, P-51 fighters, B-25 Mitchell bombers, UC-64 utility aircraft, L-1 and L-5 observation aircraft and a glider force consisting of CC-4As and TG-5s.

The 17th Light Bombardment Wing arrived at Hurlburt Field from Minho, Japan, in 1955 to conduct routine training and, after a three-year stay, was replaced by the 4751st Missile Wing of the Air Defense Command. Its mission was to test surface-to-air missiles launched from facilities on neighboring Santa Rosa Island.

With the phase-out of the Bomarc missile in 1961, the call to train airborne warfare specialists revived the legacy of the air commandos. They were activated April 14, 1961 as the 4400th Combat Crew Training Squadron. Less than a year later the squadron was expanded to become the 4400th Combat Crew Training Group. They were to provide the Air Force with a counterinsurgency military assistance capability. The group, as its responsibilities continued to enlarge, became the 1st Air Commando Wing on June 1, 1963.



## HISTORY (CONT.)

The Kennedy Administration and the advent of the policy of "flexible response" revived interest in special operations. As the Vietnam War expanded in scope and intensity, the Air Force increased counterinsurgency capability. Most Air Force special operations resources were dedicated to the war in Southeast Asia.

Propeller aircraft such as T-28s, B-26s, C-47s and A-1s appeared strangely out of place in the jet-age Air Force during this time, but as the commandos commented, "Our planes may be obsolete and unsophisticated, but they can do our kind of job." Whether the job was a C-47 dropping flares to illuminate the target area or a B-26 making repeated strafing, rocket and bombing passes, the jobs got done.

The 1st Air Commando Wing met the expanded requirement of air operations in Vietnam. The air commando units were involved in psychological operations as well as unconventional warfare and foreign internal defense activities. The AC-130 performed the interdiction mission in an outstanding manner and proved to be the most effective "truck killer" of the war.

The 1st Air Commando Wing became the 1st Special Operations Wing of the U.S. Air Force Special Operations Force July 8, 1968. Missions of the Air Force Special Operations Force and the 1st SOW were consolidated July 1, 1974, and the Wing was re-designated the 834th Tactical Composite Wing, reporting directly to the commander of Tactical Air Command. The Wing once again assumed its name as the 1st SOW July 1, 1975.

Following the consolidation of combat rescue forces and special operations forces under a new numbered Air Force (23rd AF) on March 1, 1983, the 1st SOW no longer reported to Tactical Air Command, but to the Military Airlift Command. The 1st SOW became a unit under the reactivated 2nd Air Division.

The 1st SOW performed an important role in the Vice President's South Florida Drug Task Force beginning on May 1, 1983, by helping curb the flow of illegal drugs into the United States. They transported Bahamian authorities and drug enforcement agents to sites of drug action. This also provided aircrews with realistic, high-stress training.

The 1st SOW mobilized into a fighting force during Operation URGENT FURY in October 1983. The 1st SOW's AC-130H Spectre gunships and MC-130 Combat Talons deployed to the island of Grenada. On board the MC-130s were Army rangers and a combat control team. The purpose was to go in and rescue the American medical students and other Americans on the island. The success of the mission threw the 1st SOW into the limelight and drew national attention for months.

The 2nd Air Division was inactivated Feb. 1, 1987, and the headquarters for 23rd Air Force moved to Hurlburt Field from Scott Air Force Base, IL, on Aug. 1, 1987.

## HISTORY (CONT.)

The 1st SOW was mobilized for Operation JUST CAUSE in December 1989. All five flying squadrons under the 1st SOW deployed aircraft, aircrew, and support personnel to Panama. The 1723rd Special Tactics Squadron also participated. The purpose of the operation was to protect the lives of Americans and American interests under the Canal Treaty, to establish law and order, to restore democracy and to bring Panama's dictator, General Manuel Noriega, to justice. The mission was successful, resulting in the arrest and extradition of Noriega to the United States and the surrender of Panama's Defense Forces.

In mid-January 1991, President George Bush ordered the execution of Operation DESERT STORM to expel Iraq from Kuwait. Hurlburt Field personnel played a significant role in Operation DESERT STORM. The MC-130E Combat Talons dropped leaflets on Iraqi forces and for the first time dropped 15,000-pound BLU-82 bombs in combat. The MH-53J Pave Lows teamed with Army helicopters to knock out Iraqi early warning sites and open a hole in their air defense system. After that they served primarily in a combat search-and-rescue role and rescued a downed Navy flier Jan. 21, 1991. The AC-130H Spectre gunships flew armed reconnaissance and destroyed targets identified during Desert Shield. The MH-60G Pave Hawk helicopters performed combat search-and-rescue and inserted Special Forces behind enemy lines. Also, the HC-130 Combat Shadow tankers flew deep into Iraq to refuel 1st SOW helicopters in a high threat environment. By March 13, 1991, wing aircraft had flown more than 10,000 hours on more than 5,000 sorties. During that time, the 1st SOW lost one AC-130H and its crew of 14 while supporting Marine ground forces. This was the largest single loss suffered by any unit in Operation DESERT STORM.

The 23rd Air Force was re-designated as the Air Force Special Operations Command May 22, 1990. It was concurrently established as a major air command of the Air Force and it remained the Air Force component of the U.S. Special Operations Command.



The 1st SOW was re-designated the 16th SOW on Oct. 1, 1993 by Air Force Chief of Staff Gen. Merrill A. McPeak, as part of Air Force-wide unit renumbering.

The mission of the 16th SOW continued to provide a rapid reaction force for global special operations and to train aircrews to instruct and assist allied forces in all phases of special air operations.

On November 16, 2006, the Air Force re-designated the 16th SOW back to the 1st SOW. Hurlburt Field is proud of its history and it stands ready to perform its unique mission "Any Time, Any Place."

## **IN HONOR OF OUR AIR COMMANDO HISTORY**

You can find Commandos pounding the roadways around Hurlburt Field anytime of the day and night. They run to stay in shape, to be able to perform the mission when called upon. The missions are often dangerous, and in the past many Commandos have paid the ultimate sacrifice in defense of the nation. What many people may not realize is that the streets they run at Hurlburt Field serve not only to help people get around base, but also serve as reminders of those who have gone before - so they may never be forgotten. The streets of Hurlburt Field have been named for fallen Commandos who were killed in action or killed in other Special Operations missions. In the same token, people across base attend meetings and conferences in rooms and facilities named for those who have gone before. The following is a partial list of those silent reminders dedicated to the spirit of the Quite Professionals.

### **Commandos Killed in Southeast Asia**

(Dedicated November 21, 1964)

Bartley Street - Capt John P. Bartley  
Bedal Street - 1Lt Arthur E. Bedal  
Bennett Avenue - Capt Robert D. Bennett  
Booth Circle - Capt Herbert W. Booth, Jr.  
Campaigne Street - Capt Jerry Campaigne  
Cody Avenue - Capt Howard R. Cody  
Cruz Avenue - SSgt Raphael Cruz  
Foxy Street - TSgt Richard L. Foxy  
Frazier Street - TSgt Floyd M. Frazier  
Hartson Street - 1Lt Stanley G. Hartson  
Kissam Street - Capt Edward K. Kissam, Jr.  
Letourneau Circle - 1Lt Jack D. Letourneau  
Leilmanis Avenue - 1Lt Atis K. Leilmanis  
Lukasik Avenue - Capt Bernard F. Lukasik  
McClellan Avenue - Capt John H. McClellan  
Mitchell Road - Capt Andrew C. Mitchell  
O'Neill Avenue - Maj James R. O'Neill  
Purcell Drive - Capt Howard P. Purcell  
Simpson Avenue - Capt Robert L. Simpson  
Terry Avenue - Capt Condon H. Terry  
Tully Street - 1Lt William B. Tully  
Westfall Circle - A1C Robert L. Westfall

## **IN HONOR OF OUR AIR COMMANDO HISTORY (CONT.)**

### **Commandos Killed in Iran During Desert One**

(Dedicated October 24, 1980)

Bakke Street - Capt Richard L. Bakke  
Lewis Drive - Capt Harold L. Lewis, Jr.  
Mayo Street - TSgt Joel C. Mayo  
McIntosh Court - Capt Lyn D. McIntosh  
McMillan Street - Capt Charles T. McMillan

### **Commandos Killed in Operation Bat**

(Dedicated May 28, 1984)

Acha Drive - SSgt Edgardo L. Acha  
Hamby Place - 1Lt Thomas L. Hamby  
Whitbeck Street - Capt Dyke H. Whitbeck  
1st Special Operations Wing Vice Commander killed during a joint exercise  
Hume Drive - Col Harlan B. Hume

### **Commandos Killed in Desert Storm**

(Dedicated January 31, 1992)

Bland Street - 1Lt Thomas C. Bland, Jr.  
Blessinger Drive - SSgt John P. Blessinger  
Buege Boulevard - SMSgt Paul G. Buege  
Clark Road - Sgt Barry M. Clark  
Galvan Street - Capt Arthur Galvan  
Grimm Lane - Capt William D. Grimm  
Harrison Drive - SSgt Timothy R. Harrison  
Hodges Street - TSgt Robert K. Hodges  
Kanuha Drive - SSgt Damon V. Kanuha  
May Street - MSgt James B. May II  
Oelschlager Street - SSgt John L. Oelschlager  
Schmauss Lane - SSgt Mark J. Schmauss  
Walters Drive - Capt Dixon L. Walters, Jr.  
Weaver Avenue - Maj Paul J. Weaver



## IN HONOR OF OUR AIR COMMANDO HISTORY (CONT.)

### Facilities Named In Honor of Fallen Commandos

At Kadena Air Base, Japan, home of the 353rd Special Operations Group, one of AFSOC's Medal of Honor recipients is remembered. The Airman Leadership School has dedicated a reading room to **Maj Bernard F. Fisher**, 1st Air Commandos. Major Fisher earned the Medal of Honor March 10, 1966, in Vietnam. The base also has a Fisher Avenue.

**Cochran Building**, Headquarters AFSOC building, is dedicated to Col Philip G. Cochran, commander of the 1<sup>st</sup> Air Commandos in World War II, Pacific Theater.

**Alison Building**, U.S. Air Force Special Operations School, is dedicated to Col John R. Alison, co-commander of the 1st Air Commandos.

**Selfridge Hall**, 20th Special Operations Squadron building, is named for CMSgt John D. Selfridge, who led the unit through the transition of HH-53H Pave Low helicopters; he died on active duty after serving over 29 years.

**Eason Hangar**, in honor of Capt Edwin Eason, killed in action in Vietnam.

**Hartenhoff Hall**, in honor of MSgt Duane Hartenhoff, killed in action in Vietnam.

**Jeffries Hall**, in honor of SSgt James Jeffries, who died in a military aircraft accident undergoing combat crew training in 1968.

**Lomartire Hall**, in honor of Sgt. John Lomartire, 834th Security Police Squadron, killed in a bicycle accident in front of Hurlburt Field in 1977.

**Maj. Gen. James and Mrs. Dozier Terrorist Capabilities Demonstration Range**, for General Dozier and his wife. While stationed in Italy in December 1981, the general was kidnapped by the Italian Red Brigade and held for 42 days.

### Conference Rooms Named In Honor of Fallen Commandos (In Headquarters AFSOC Building)

**Air Commando Room**, represents all Air Commandos/Special Operators from World War II through now.

**Partisan Room**, those we supported in World War II, Korea, Vietnam, and Southwest Asia.

**Farmgate Room**, code name of the first unit to deploy to Vietnam in 1961.

**Arnold Room**, named after General "Hap" Arnold, the first Air Force chief of staff who had a vision to use the flexibility of air power, i.e., Air Commandos, in Burma.

**Chindit Room**, British troops that the Air Commandos supported in Burma in 1944.

**Wingate Room**, British leader who saw a new use for air power in World War II; he was involved in Commando operations in the Middle East and Ethiopia.

**Sontay Room**, dedicated to the Special Operations forces involved in the raid/rescue mission of the Vietnam Prisoner of War camp.

**ARC Room**, dedicated to the Air Resupply and Communications Wing that carried the SOF mission during the Korean War.