



**Performer**

**Welcome Packet**

**JB Charleston AFB,**

**Charleston, SC**





**DEPARTMENT OF THE AIR FORCE  
HEADQUARTERS 628TH AIR BASE WING (AMC)  
JOINT BASE CHARLESTON SC**

6 April 2022

Colonel Marc E. Greene, USAF  
Commander  
628th Air Base Wing  
102 E. Hill Blvd, Suite A  
Joint Base Charleston SC 29404

Air Expo Performers and Participants,

Welcome to Joint Base Charleston! On behalf of the men and women of Team Charleston, I am pleased to welcome you and your aircraft to our 2022 Air Expo. The success of this event will undoubtedly reflect the tireless efforts and dedication of organizers and participants such as yourself. Thank you!

The Air Expo is a chance to provide our family, friends and partners in the Charleston community an opportunity to meet our outstanding Airmen and showcase the Nation's supreme airpower capabilities. Please share your expertise and experience with the thousands of spectators as they tour your aircraft. As you enjoy the festivities, be vigilant to the many hazards that could arise. Protect yourself and your aircraft; you are our first line of defense in maintaining a safe and secure flight line.

Again, thank you for participating in the Joint Base Charleston 2022 Air Expo - I hope your stay is safe, enjoyable, and memorable. We hope to see you again!

A handwritten signature in black ink, appearing to read "MSE", is positioned above the printed name.

MARC E. GREENE, Colonel, USAF  
Commander

## Quick Reference

Base Access Directions □ □ .....	4-5
Performance Area □ □ □ □ □ □ .....	6
Airfield Map □ □ .....	7
Vehicle Information □ □ □ □ □ □ .....	8
Charleston MUST-EATs.....	9
Medical Facility Information.....	10
Performer Party Invitation □ ...	11

## Base Access Directions

For the Air Expo Event days, we have a separate parking lot just for you. We call it the "Yellow Lot".

Parking on the actual Air Expo event days of 8, 9, and 10 Apr will be via the following instructions:

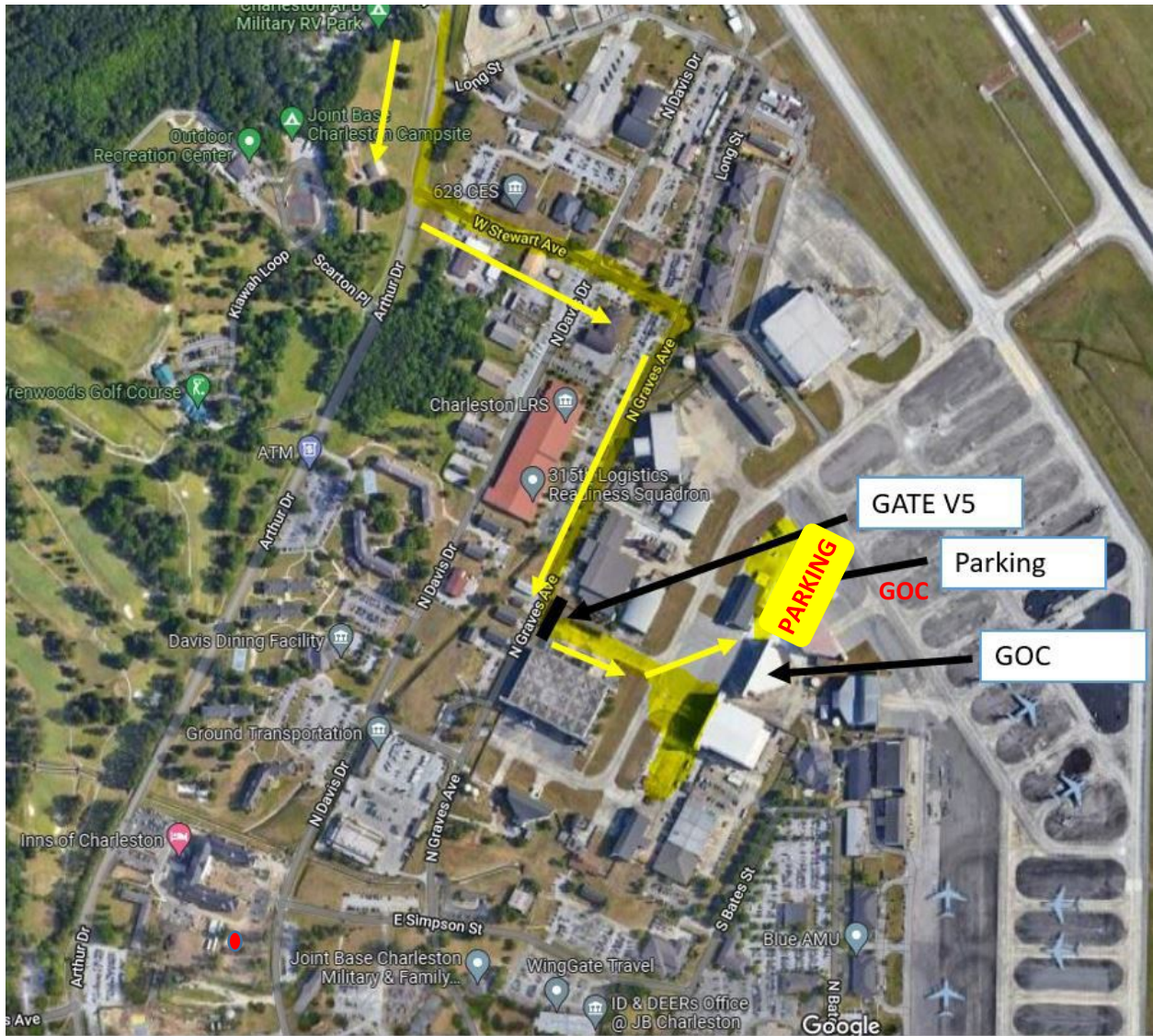
If you are lodging off base, you must arrive early in the morning in order to "beat the crowds". We expect the general public to try to line up early at all of the Air Base gates. This is typical for an air show. However, our gate guards will turn them away, leaving the gates open for performers like you to arrive first. If arriving from off base hotels, please try to be on base no later than 7:30am. **Recommend arrive between 6:30 am and 7:30 each day.** Have your Yellow "PERFORMER" dash pass displayed prominently in your front windshield. You will be granted access via the Dash Pass or your military ID.

If you are arriving from on-base lodging, you can sleep in a lot more! The ramp is open to the public at 9:00am each day so you only have to arrive in time to set up your plane for presentation. You decide when that should be. **For flying performers, the Air Boss brief begins promptly at 9:30am at the GOC.**

From off base, if you enter through the River (back gate via Aviation Ave), **proceed straight** on Arthur Dr. **Turn Left** onto W Stewart Ave. **Turn Right** on N Graves Ave. **Turn Left** and proceed through "Gate V5". See map below:

If you enter through the Main Dorchester Gate, navigate to Gate V5 via: **Proceed Straight** on Hill Blvd, **Turn Left** on N. Graves Ave, and **Turn Right** through Gate V5.







# Performance Area



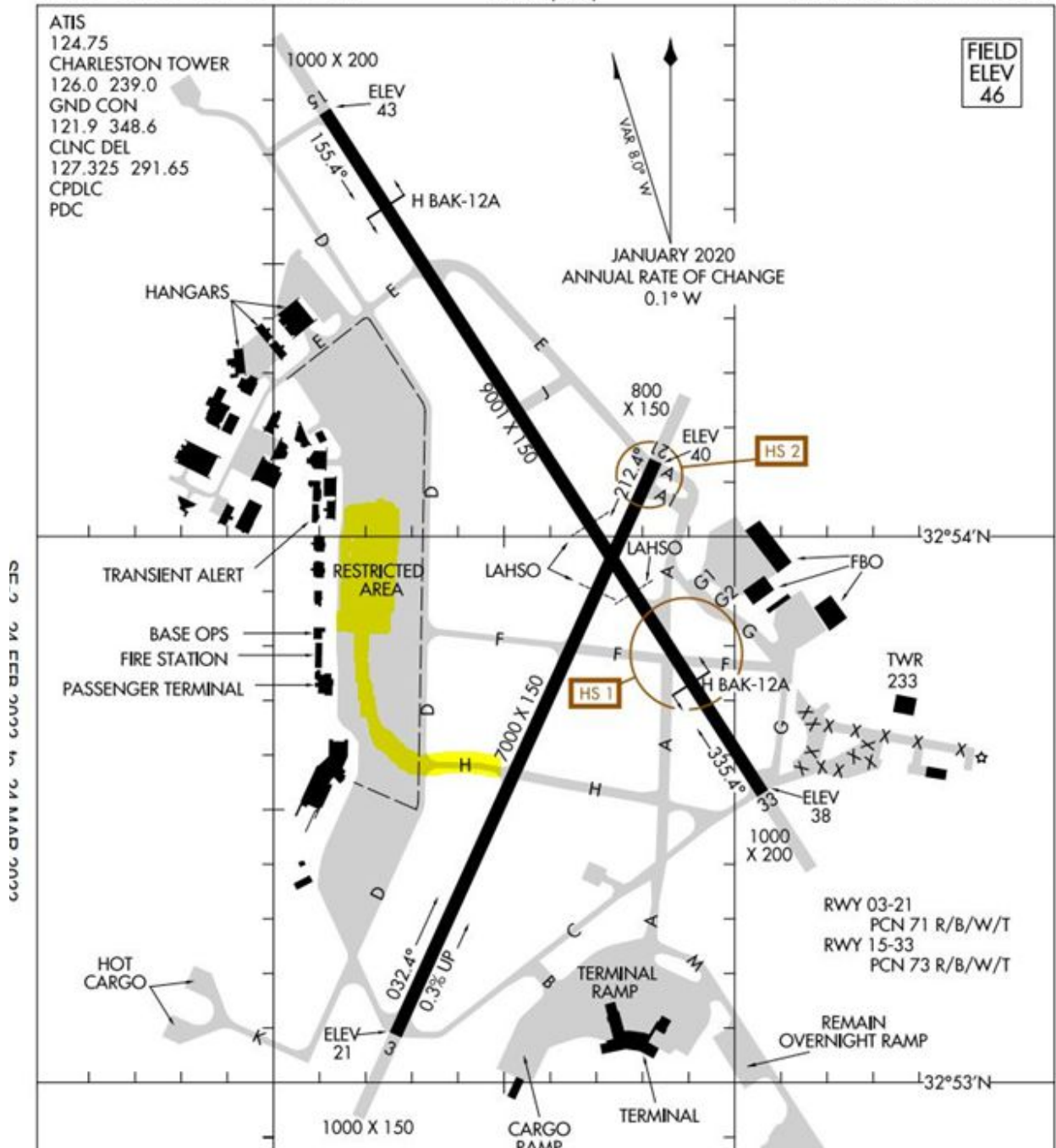
# Airfield Map

21336

## AIRPORT DIAGRAM

AL-76 (FAA)

CHARLESTON AFB/INTL (CHS)  
CHARLESTON, SOUTH CAROLINA



## **Vehicle Information**

For those that the Air Show host has provided pre-arranged government and/or rental vehicles, they are for your use for the duration of your stay. Please remember to treat these vehicles like they are your own and respect that the host is funding these for your needs during your stay. You will be provided a vehicle with a full tank of gas. Any gas tank fills after are personal expenses.

Please return the vehicles in good condition (i.e. free of trash, personal belongings, etc.) when it is time to depart, and return your vehicles to the location in which they were issued with the keys left inside.



## Charleston MUST-EATs

Mesu - Mexican and sushi	Codfather	Eurofoods	Three matadors - Mexican
The Watch-rooftop	Baker & Brewer - pizza and beer	Kaminskys	First watch - brunch
Harbinger - coffee, cafe, bakery	Warehouse - gastro pub	The Pineapple Hut	82 Queen - brunch & southern food
Lewis BBQ	Tabbuli	Poe's Tavern - burgers & fish tacos	Istanbul Shish Kabob - Turkish food
The park cafe	Sesame Burger	Rodney Scott's BBQ	Thai Elephant - Thai
843 - Korean bbq and sushi	Recovery room - bar	Fuel	Lanna Thai- Thai
Chubby fish	Felix - cocktails	Myles and Jun yakitori	Halls chophouse
Butcher and bee	Montroux bar and grill	Mama Kim's - Korean bbq	Crazy mason milkshake bar - dessert
Saltwater Cowboys - seafood & bbq	Vicious Biscuit	Melfis - pizza & pasta	The Jerusalem market and deli
Carmellas dessert bar	Lola - seafood / Louisiana	Kid cashew - brunch	Bohemian bow
Jackrabbit filly - Asian & Latin	Mercantile and Mash - cafe / coffee	Sea biscuit cafe - brunch	
Toast of Charleston - brunch	Pink bellies - Vietnamese	Hen and the goat - sandwich shop	
Dashi - Asian & Latin	The Alley - eat drink bowl arcade	Coastal crust creamery - ice cream	
Kudu - coffee and craft beer	Kwei fei - Chinese	The pass - deli	
Evo- pizzeria	Pink cactus - Mexican	Junction kitchen - brunch	
Bodega - sandwiches	Miller's all day - brunch	Wild olive - nice Italian	
Callies hot little biscuit - breakfast	Glazed gourmet - donuts	Lupia house	
Co-op Sullivan's island - frose and food	Edmunds oast - brewery	Poke burri	
Reds ice house - drinks and bar food	Pages okra grill - southern food / seafood	Fuji sushi	
Taco boy - tacos	Cafe framboise - breakfast	The griffin	

## **Medical Facility Information**

### **Military Personnel**

#### **628 Medical Group**

204 W Hill Blvd, Joint Base Charleston, SC 29404

M-F 0730-1630

Appointment Line: (843) 963-6880

Flight Medicine: (843) 963-6683/6685

Tricare Nurse Advice Hotline: 1-800-874-2273

**On-Call Flight Doctor: (843) 963-4589**

### **Civilian Personnel**

#### **Premier Medical:**

5880 Rivers Ave

North Charleston, SC 29406

M-Sat 0800-2000

(843) 405-8833

#### **Roper St. Francis Express Care:**

5070 International Blvd #131,

North Charleston, SC 29418

M-Sunday 0800-2000

(843) 402-2995

## Performer Party Invitation



You are invited to attend the Joint Base Charleston

Airshow Performer's Party

on Friday, April 8th, 2022

Social 1730-1800

Event 1800-2000

Nose Dock 2, Bldg. 578

Joint Base Charleston, SC

Light refreshments will be provided

Cash bar available

R.s.v.p. by 24 March 2022

Military: UOD  
Civilian: Casual

**Please refer to base map provided in welcome packet for event and event parking.**

[Click Here to R.s.v.p.](#)