

JBER Life!

YOUR FSS/MWR GUIDE
FEBRUARY 2023



**JBER'S GOT
TALENT**

pg. 7

**LOVER'S LANE
DATE NIGHT**

pg. 10

**HEARTS APART
HILLBERG
EVENT**

pg. 23

CHILD & YOUTH PROGRAM ASSISTANTS

REGULAR & FLEXIBLE POSITIONS

STARTING PAY
\$18 – \$20.40

First child FREE while working for Child & Youth Programs.

Priority placement for JBER childcare with an additional 15% sibling DISCOUNT for every additional child, plus a 25% employee discount.

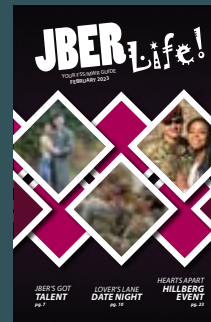
BENEFITS INCLUDE: *New*

Joint Military Mall & Commissary Access
Health & Life Insurance
Retirement Plan & 401(k)
FREE Gym Access
FREE Swimming Pool Access
Education Reimbursement
Annual & Sick Leave
Holiday Pay



APPLY TODAY! JOBS.JBERLIFE.COM

For more information, call 552.4563



Cover: Patricia M.

FSS LEADERSHIP TEAM

773 FSS Director
Joseph Dyson

Deputy Director
Moira Trevisan

673 FSS Commander
Lt Col Olivia Korte

Deputy Director
Christine Kaleikini

MARKETING TEAM

Marketing Director
Kelsey P.

Graphic Design
Nicholas H.
Patricia M.

Operations Clerk
Kendra C.

Sponsorship Coordinator
Kyle H

Web & Social Media
Joshua D.

For information on **JBER LIFE!**, call 907.552.5900 or email 673fss.Marketing@us.af.mil

No Federal endorsement of sponsors/advertisers intended within this publication.

IN THIS ISSUE

- pg. 7 | JBER's Got Talent
- pg. 8 | Meet Katrina Stephens
- pg. 10 | Lover's Lane Bowling
- pg. 13 | Moose On Parade
- pg. 14 | One Day Winter Kids Camp
- pg. 17 | Tri Something New!
- pg. 19 | Single Service Member Trips
- pg. 20 | Lodging is Hiring
- pg. 22 | EFMP 101
- pg. 24 | Alyeska Tickets
- pg. 28 | Youth Sports
Baseball & Softball Little League
- pg. 32 | Free Movie Showings
Black Adam & Amsterdam
- pg. 34 | Food – This Month's Specials

STAY CONNECTED

with your community



LIKE US ON FACEBOOK
@JBERLIFE



FOLLOW US ON INSTAGRAM
@JBERLIFE



VIEW EVENT PHOTOS ON FLICKR
JBER LIFE!



CHECK US OUT ON THE WEB
JBERLIFE.COM

OUTDOOR RECREATION CENTER

4414 Pease Ave. • 552.2023

The Outdoor Recreation Center has been relocated to 4414 Pease Ave! Call today at 552.2023 to sign up for your next adventure.

WINTER RECREATION

There is still time to rent out winter equipment! We have a large variety of items for rent, such as:

- Cross Country Ski Equipment
- Fat Tire Bikes
- Ice Fishing Equipment
- Snow Blowers
- Snowmachine Trailers
- Snowshoes
- Sleds
- Ice Skates
- Plus more!

All season rentals must be returned by Sun 16 Apr.



Ice Fishing

It's a great time to go ice fishing now that many lakes are frozen. Come check out your equipment from ODR. Our staff can assist you with what you need for your fishing trip!

In addition, we sell Fishing Licenses!



AERO CLUB

Hangar 7 • 10286 Taxi Way #P • 552.5435

PRIVATE PILOT GROUND SCHOOL

28 Mar - 25 May

Tuesdays & Thursdays • 6 – 9 p.m.

\$710 Per Course Plus Training Kit

The first step to earning your wings. The purpose of ground school is to help you prepare for the required FAA knowledge test and provide a foundation to becoming a competent aviator. Aero Club offers ground school courses for the private pilot certificate and the instrument rating certificate.

Register at least two weeks prior to class to ensure space and training materials are available.

To register for the school or for more information **SCAN HERE!**



AUTO HOBBY

755 D St. • 384.3718

WE HAVE THE TOOLS AND THE KNOW HOW.

Our automotive mechanics and shop attendants are available to answer your questions while you are using the shop to do your own maintenance and repairs. Any project, from oil changes to engine swaps, can be done here.



ARCTIC OASIS COMMUNITY CENTER

9497 20th St. • 552.8529

| ACTING LESSONS

CREATIVE KIDS

45 min • \$50 • Ages 3–4

This class aims to foster creativity in young individuals through games, storytelling, and exploration. Participants will gain an introduction to acting through a fun, playful, and creative environment.

BEGINNER

1 hour • \$60 • Ages 5+

We all have to start somewhere. Our acting classes for beginners cater to those looking to explore this art form and build a strong acting foundation.

INTERMEDIATE

1 hour • \$60 • Ages 10+

Improvisation is one of the core techniques used by actors. It stretches the imagination, sparks spontaneity, and can lead to unforgettable performances.

SOLO LESSONS

30 min • \$125

1 hour • \$175

Our one-on-one lessons with an acting coach are available to better hone your craft.

ADULT IMPROVISATION LESSONS

1 hour • 7 - 8 p.m. • \$60

Learn how to improve your acting techniques which will strengthen your imagination and develop skills for an amazing performance.

| VOICE LESSONS

SOLO LESSONS

30 min • \$125

1 hour • \$175

All Ages

Our solo lessons will help you improve your singing techniques. Learn to care for and develop your voice for future performances.



JBER'S GOT TALENT

LIVE: SAT 25 FEB

4 P.M. • AGES 3+ • FREE

Talkeetna Theater, 7100 Fighter Dr.

Doors open at 3:30 p.m.

Come out and see the talent of JBER!



KIDS ZUMBA

Thursdays • 5:30 – 6:15 p.m.

\$2 per child • Parents are FREE

The energy from Zumba is contagious! We are excited for kids of all ages to learn new dance moves to some tunes. Parents, don't forget to join in on the fun.

KETSUGEN

30 min • \$140

1 hour • \$190

- First student: \$140/month
- Second student: \$100/month
- Additional student: \$75/month

Ketsugen Karate helps build the mind, body, and spirit. It is an effective self-defense system and exciting martial art form!

People of JBER

Katrina Stephens

Hometown: Eagle River, AK

Occupation: Human Resources Assistant

What are some of your daily duties as a human resource assistant?

Every day is different from the next in Human Resources. I help potential employees through the employment process, in-processing, and out-processing. I also help explain benefits, push through personnel actions, and so much more.

What do you like the most about working for the Force Support Squadron (FSS)?

I like that within FSS there is a sense of community. Working in FSS has given me the opportunity to meet a lot of different people from many different walks of life and make important connections.

How long have you been working on JBER?

I have been working on JBER for nearly two years and in Human Resources for almost one year.

What is the coolest thing about your job?

The coolest thing about my job, I think, is that I get to help people grow and advance their careers. I also get to congratulate applicants on their job offers, and I love hearing the excitement in their voices.

What is your favorite thing to do this time of year?

My favorite thing about February, here in Alaska, is the kickoff of Fur Rondy and the Iditarod. There are so many events that take place, and I love seeing the dog sleds take off at the ceremonial start.

Fun facts about yourself?

I completed an internship at Walt Disney World and know a bunch of fun facts about the parks, including where all the hidden Mickeys are.



POLAR BOWL

7176 Fighter Dr • 753.PINS

HOMESCHOOL P.E. DAYS

Thursdays • 12 – 4 p.m.

- Each Game: 0.99¢
- Must show your homeschool ID

BOTTOMLESS BOWLING

Thursdays • 4 – 8 p.m.

- Each Game: \$3.99
- All You Can Bowl: \$9.99/person

MAD SKILLS GAMES

Thursdays • \$24.99/hour

Fri – Sun • \$29.99/hour

RENT-A-LANE

Thursdays • \$19.99/hour

Fri – Sun • \$24.99/hour

Saturdays • 12 – 5 p.m. only

WEEKDAY SPECIAL

Thursdays & Fridays • 12 – 4 p.m.

- Each Game: \$1.29

PARENT AND TOT DAYS

Fridays • 12 – 4 p.m.

- Each Game: 0.99¢

*Includes shoes.

\$3.99 shoes unless otherwise noted.

LIMITED LANE AVAILABILITY

Sat 4 Feb • 2 - 7 p.m.

OPEN BOWLING

Fridays • 4 – 10 p.m.

- Each Game: \$3.99
- 1-Hour: \$19.99/lane

LEARN TO BOWL CAMP

Saturdays • 2:30 – 4 p.m.

Sign-ups for March classes begin Thurs 2 Feb

- 30 minutes of video and instruction
- 1 hour of hands-on learning on the lane

NEON BOWLING

Saturdays • 5 – 10 p.m.

- Each Game: \$4.99
- 1 Hour: \$13.99/person*
- 2 Hours: \$16.99/person*
- 3 Hours: \$19.99/person*

SUNDAY FUNDAY

Sundays • 1 – 6 p.m.

- Each Game: \$3.29
 - 90-Minute • \$39.99/lane*
- Includes two FREE pitchers of soda

BIRTHDAY PARTIES

Celebrate your party with us! We do all the work; you have all the fun! Call for rates and package options.

LOVER'S LANE DATE NIGHT

Sat 11 Feb • 6 - 9 p.m. • \$44.99 per couple

Make your Valentine's Day special with 2 hours of neon bowling, shoe rental for 2, heart shaped balloons, and champagne (ages 21+) or sparkling cider. Must sign up in advance. Call to reserve.



MUSIC THEMED NIGHTS

Fridays • 4 – 10 p.m.

- 3 Feb: Pop Music
- 10 Feb: Country Music
- 17 Feb: Hip Hop Music
- 24 Feb: Rock Music

SHOUT IT OUT FAMILY NIGHT

Sat 4 Feb • 3 – 6 p.m.

As you bowl, players will shout out as many things in a specific category before the ball hits the pins. At the end of the game, the total number of items listed will be added to the final score. Categories and scoring sheets will be provided. Max of 5 per lane.

- 1-Hour: \$14.99/lane

BOWLING DAY IN THE USA

Sat 11 Feb • 12 – 4 p.m.

Celebrate bowling day with 1 hour of FREE bowling per family who has at least one child under the age of 15. Families can purchase an additional hour at 50% off. Shoe rental included for bowlers under 15 only. To sign up or for more information, scan below.



LADIES' NIGHT BOWLING

Sat 25 Feb • 7 – 9 p.m.

Join us for 2 hours of neon bowling, enter to win some prizes, and have a great time! Prizes will be based on the number of participants. Reserve a lane now until 23 Feb. All payments are 100% refundable. Limited availability.

- 2-Hours: \$49.99/lane*



ARTS & CRAFTS CENTER

755 D St. • 384.3717

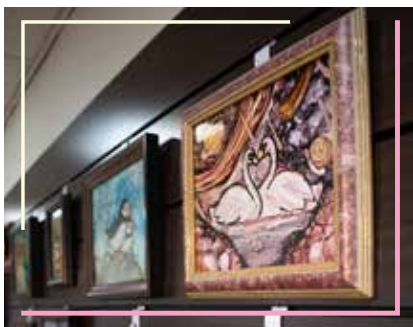
Classes

FRAMING

Wed 1, 15 Feb • 10 a.m.

Ages 12+ • \$50

Want to frame your own photo? Bring a 5x7 photo and learn how to measure and cut mats, glass, plus foam core to put a frame together for a unique piece of art. Framing class is required prior to the use of self-service in our shop.



WOOD SHOP

Sat 4 Feb • 9 a.m.

Ages 16+ • \$10

This class is mandatory for future self-service performed in our wood shop. Must be at least 16+. Safety glasses and ear protection must be worn at all times.

WOOD PAINTING

Fri 10 Feb • 5 p.m.

Ages 18+ • \$45-55

Sign up today to learn how to paint an Alaskan scene on wood and make a 3D design. Adult beverages will be available for purchase.

GLASS FRIT

Wed 15 Feb • 10 a.m.

Ages 5+ • \$30

In this class, learn the skills to take a pattern and layout pieces of glass that are precut and crushed that will be fused together in the kiln.

CLAY HANDBUILDING

Wed 15 Feb • 10 a.m.

Ages 5+ • \$30

In this class, you will learn different skills and techniques to make different clay items by hand. 7-10 days after you complete your piece, return to glaze at no additional cost.

GLASS FUSION

Wed 22 Feb • 10 a.m.

Ages 10+ • \$30

In this class, you will learn to trace a design, cut glass, grind glass, and assemble your artwork to be fused in the kiln.

ALCOHOL INK

Fri 24 Feb • 5 p.m.

Ages 18+ • \$35 - \$45

Learn the techniques needed to create a masterpiece with alcohol ink that to take home.

Homeschool Classes

Fridays • 10 a.m. • Ages 5 - 18

CLAY HANDBUILDING

3 Feb • \$30

Learn how to make different clay items by hand. 7-10 days after you complete your piece, return to glaze at no additional cost.

ALCOHOL INK

10 Feb • \$30

Create an alcohol ink masterpiece that you can take home.

GLASS FRIT

17 Feb • \$30

Using a pattern, you will design a piece by using glass that is precut and crushed. Your design will then be fused together in the kiln.

GLASS FUSION

24 Feb • \$30

Learn the skills needed to trace a design, cut, grind, and assemble glass into a work of art that will be fused together in the kiln.



Self Service

FRAMING

Tuesday - Friday • 8 a.m. - 4 p.m.

Saturday • 10 a.m. - 4 p.m.

WOOD SHOP

Tuesday - Friday • 8 a.m. - 4 p.m.

Saturday • 10 a.m. - 4 p.m.

CERAMICS & POTTERY

Tuesday - Friday • 8 a.m. - 4 p.m.

Saturday • 10 a.m. - 4 p.m.

Custom Service

LASER ENGRAVING

Tuesday - Friday • 8 a.m. - 4 p.m.

FRAMING

Tuesday - Friday • 8 a.m. - 4 p.m.

Saturday • 10 a.m. - 4 p.m.

Moose On Parade!

Now - 3 Feb • Entries due Sat 4 Feb

Moose Cut Pattern: \$20

Precut 3' Moose: \$150

Show off your skills and decorate a moose! Pick up a pattern from the Arctic Oasis or a precut moose from Arts & Crafts to enter. Entries will be displayed on the JBER Arts & Crafts Facebook page for voting between 6 - 12 Feb. Photos with the most likes wins. Winners will be announced on Mon 13 Feb.



All class registrations close 72 hours prior to class start times.

Facility is closed on Sundays and Mondays.

HILLBERG SKI AREA

23400 41st St • 552.4838

DOG SLEDDING

18 – 20 Feb • 12 – 5 p.m.

Ages 12 and under • \$5

Ages 13+ • \$10

Come out mushing with us! This activity is weather dependent and locations may vary. Dog sledding is reservation only. Please visit jberlife.com/hillberg to sign up.

ONE DAY WINTER KIDS CAMP

Mon 20 Feb • 1 – 4 p.m.

Ages: 6 – 13

- Without rentals: \$80

- With rentals: \$90

Ever been to winter camp? Come join us for all the fun skiing, snowboarding, and tubing. Call 552.5026 to register today. Limited slots available. Tubing is weather dependent.

SKI & SNOWBOARD LESSONS

Ages: 5 – 13

- Without rentals: \$65

- With rentals: \$75

Ages: 14+

- Without rentals: \$80

- With rentals: \$100

Do you or someone you know want to learn how to snowboard or ski? Call or visit the Hillberg Ski Area to get scheduled with an instructor. Limited availability.

RENTALS

Don't have your own gear, or want to plan a getaway? We got you covered. Our list of rentals include:

- Skis
- Ski Poles
- Snowboards
- Boots
- Helmets
- Lodge



SINGLE SERVICE MEMBER NIGHTS

THURSDAYS



Come out of the barracks and dorms to enjoy some skiing and snowboarding! All single Service Members will receive FREE lift tickets. Rentals not included. Visit the Hillberg Ski Area or call 552.4838 for more information.

HILLBERG SKI AREA

23400 41st St • 552.4838

ELMENDORF FITNESS CENTER

9510 22nd St. • 552.3624



MASSAGE THERAPY

- 30 min: \$38.50
- 60 min: \$60.50
- 90 min: \$88

Call 552.3624 or visit the EFC front desk to schedule your appointment.

PERSONAL TRAINING

Individual sessions:

- 1 hour • \$44

Group sessions 2 – 3 people:

- 1 hour • \$36.50 per person

Call 552.3624 or visit the EFC front desk to get connected with a trainer!

SWIM LESSONS

Group • \$55

Sign-ups begin Mon 27 Feb • 9 a.m.

Register at front desk or call 552.3624.

Private: *Current students*

- 30 min: \$25
- 45 min: \$35

Enrollment:

- Early: Thurs 16 Feb • 9 a.m.
- Open: Tues 21 Feb • 9 a.m.

Register by calling 552.0613 or email emilia.porter@us.af.mil



BUCKNER FITNESS CENTER

690 D St. • 384.1301

SWIM LESSONS

Group Lesson sign-ups begin:

Mon 27 Feb • 9 a.m. • \$55

Private Lesson sign-ups begin:

Wed 1 Mar • 9 a.m.

30 min: \$25 • 45 Min: \$35



SCAN HERE
to register



FREE
Ages 16+

Tri Something New!

First & Last Saturday of the month

Beginner: 11:15 a.m. – 12 p.m.

Experienced: 12 – 12:45 p.m.

Are you a beginner Triathlete or need some refining?
This program is geared towards improving swim strokes
and aiding conditioning in the water.



SCAN HERE
to register

BUCKNER FITNESS CENTER

690 D St. • 384.1301

OUTDOOR ADVENTURE PROGRAM

4414 Pease Ave • 552. 2023

The Outdoor Adventure Program has been relocated to 4414 Pease Ave! Call today at 552.2023 to sign up for your next adventure.

CROSS-COUNTRY SKI LESSONS EAGLEGLLEN

Fri 3 Feb • 12 – 1 p.m. • \$19

Check out this class and add this cardio exercise to your list of daily workout options.

SNOWMACHINE RIDE – WILLOW

Sat 4 Feb • 7:30 a.m. – 5 p.m.

- Passenger: \$60
- Driver: \$119

Bring a partner and join us for a ride in the great Matanuska-Susitna Borough. Driver must be at least 16 years with a valid driver's license. Passengers must be at least 12 years.

INTRO TO ICE FISHING

Mon 20 Feb • \$99 per family

- 12 – 2 p.m.
- 2:30 – 4:30 p.m.

Like fishing? Here's a new way to go about it. Experience fishing like a true frontiersman in the great north.

FAT TIRE EVENING RIDE

Thurs 23 Feb • 5 – 9 p.m. • \$39

CROSS-COUNTRY EVENING SKI BEACH LAKE

Fri 24 Feb • 5 – 9 p.m.

\$39 • Ages 12+

Here's a deal for our nighttime cross-country skiers.



SINGLE SERVICE MEMBERS



Single Service Member Programs provide a wide variety of social and positive recreation opportunities through FSS event facilities for all single Service Members from all Military branches. Space limited. Sign ups required.

FAT TIRE DAY RIDE

Sat 5 Feb • 8:30 a.m. – 4 p.m. • \$15

Have you tried riding in the snow with Fat Tire bikes? All single Service Members come out and join us for this one of a kind nighttime winter adventure.

SNOWMACHINE RIDE – WILLOW

Sat 18 Feb • 7:30 a.m. – 5 p.m. • \$15

Single Service Members, here's a deal you don't want to miss out on. Come out on a snowmachine adventure in Willow, and check this off your bucket list!

REC★ON

Check out our Rec★On program! Trips can be reserved up to 30 days in advance. Programs are open to all branches of service. Equipment provided. For more information, call 552.2023.

FAT TIRE BIKE EVENING RIDE

Thurs 2 Feb • 5 – 9 p.m.

\$39 → \$15 • Ages 14+

Join us for an evening winter bike ride with this deal!

CROSS-COUNTRY DAY SKI MOOSE MEADOWS

Sun 19 Feb • 9 a.m. – 5 p.m.

\$39 → \$25 • Ages 14+

Here's a deal for our daytime cross-country skiers.

SNOWMACHINE RIDE WILLOW

Sat 11 & 25 Feb

7:30 a.m. – 5 p.m.

- Passenger: ~~\$60~~ → \$10
- Driver: ~~\$119~~ → \$35

FAT TIRE BIKE DAY RIDE

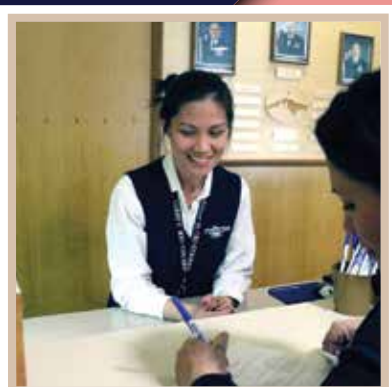
Sun 26 Feb • 10 a.m. – 4 p.m.

\$79 → \$25 • Ages 14+

Come out for an all-day adventure of riding a Fat Tire bike.

LODGING IS

Hiring!



Are you currently looking for a new job? We have many positions available at our Lodging facilities on Joint Base Elmendorf-Richardson. Experienced or not, we have training available for you.

WHY SHOULD I WORK WITH JBER LODGING?

Flexibility! We look out for our team, doing our best to accommodate schedules and life events, always striving for a healthy work-life balance. We have a HUGE variety of shifts and positions open currently. The facilities are on the installation, and for many this means a shorter commute, reduction of traffic delays, and helps save money on gas. The work is rewarding and we have a lot of benefits available for employees. There is a lot of opportunity for advancement. Personal and professional growth is highly encouraged.

Working for Air Force Inns has a wide range of benefits such as healthcare (including vision and dental), tuition assistance, 401k, life insurance, paid time off, sick leave, maternity leave, and bereavement leave. We have a variety of positions open with varying schedules to suit most people's needs.

We are a team that looks out for each other. We celebrate everyone's successes and feel everyone's disappointments. We celebrate birthdays, weddings, babies, and we cry when good friends leave us or pursue new opportunities elsewhere.



If you have any questions, call us directly. If you're having trouble applying, reach out to our able and willing staff, who will help any interested applicants navigate the website and complete paperwork.

TIPS WHEN APPLYING:

Go to [USAJobs.gov](https://www.usajobs.gov) and type "NAF" in the Keywords and "Elmendorf AF Base, Alaska" in the location search bar to view and apply. Be descriptive and thorough. Also include qualifications pertaining to you, such as:

- Military Spouse Preference
- Outside Applicant Veteran
- Spouse/Widow/Parent of Veteran
- Transition Hiring Preference

Your audience is the hiring manager and HR. Assume they are unfamiliar with information pertaining to your current and prior positions. For each experience include:

- Specific duties and tasks
- Past experience with custodial services, housekeeping, or related fields.

How do I apply?



CREATE A USAJOBS PROFILE



SEARCH FOR JOBS



REVIEW JOB ANNOUNCEMENT



PREPARE YOUR APPLICATION



SUBMIT YOUR APPLICATION

HAVE ANY QUESTIONS?

Call 552.4563 or visit
Jobs.JBERLIFE.COM

MILITARY & FAMILY READINESS CENTERS

Army Community Services • 600, Richardson Dr, Rm A139 • 384.1517
Log Cabin • 8535 Wewak Dr • 552.4943

Employment Readiness

LINKEDIN 101

Wed 8 Feb • 12 – 1:30 p.m.

Put yourself out there and learn some basic skills and tips to getting started on LinkedIn. This class will show you how to optimize your profile and further your career path.

NAVIGATING USAJOBS

Wed 15 Feb • 12 – 1:30 p.m.

Learn how to analyze job opportunity announcements and how to prepare a competitive Federal resume.

INTRO TO BUILDING A RESUME

Wed 22 Feb • 12 – 1:30 p.m.

Nothing is worse than staring at a blank page. Take this class and learn different types of resumes for different employers. Understand different methods of marketing your resume and using key words that hiring managers are looking for.

Exceptional Family Member Program (EFMP)

EFMP PARENT ADVISORY

Wed 15 Feb • 12 – 1 p.m.

8517 20th ST, Rm 110

Discuss various programs, events, topics, and help provide input from a parents' perspective. If you answered "yes" to any of the questions below, join us in person or virtually.

- Do you have thoughts, input, or concerns about EFMP?
- Are you missing out on some important information?
- Do you want to know ways other families are adjusting with issues?
- Are you curious of what others have to say about the program?

EFMP 101

Wed 22 Feb • 10 – 11 a.m.

New to JBER and EFMP? This is a great opportunity to have all your questions answered. You don't have to wonder anymore about what comes after enrollment. All are welcome to attend. No registration is required. For more information please call 552.8840 or 384.0225.

- EFMP Air Force Assignments
- EFMP Medical
- EFMP Family Support

Hearts Apart

Open to families of currently or recently deployed Service Members, including those on Remote Tours and Extended TDYs (30+ days)

FAMILY NIGHT

Fi 10 Feb • 5 – 6:30 p.m.

USO, 7076 Chenault Ave

Join us to connect with other deployed families, play some games, make crafts, enable youth resiliency, enjoy dinner, and more! Registration is required.

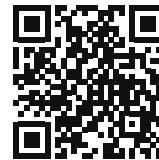
TUBING

Fri 24 Feb • 2 – 4 p.m.

Hillberg Ski Area, 23400 41st ST.

Time to have fun in the snow! Tubers must be at least 42 inches tall. Registration is required.

 Virtual session



To register for our events, visit [Tockify.com/JBERMFRC](https://tockify.com/JBERMFRC) or scan the QR code. For more information please call 384.1517 or 552.4943.

SFRG & Key Spouse

HEART LINK SPOUSE ORIENTATION

Wed 22 Feb • 8:30 a.m. – 3:30 p.m.

Log Cabin, 8535 Wewak Dr.

Come learn about all things military to help you adjust to the lifestyle. Figure out how to decode "military-talk" and know what resources, programs, and opportunities are available to support military families.

Do all of this in an interactive format so you can have fun and connect with other spouses. Open to all Military Spouses. Games, prizes, lunch, activities, installation leadership, spouse panels, and so much more will be available. Registration is required.



INFORMATION, TICKETS & TRAVEL

9497 20th St. • 753.2378

COMING SOON...

MAJOR MARINE BOAT TOUR

Seward • Sat 6 May

PHILIPS 26 GLACIER CRUISE

Whittier • Sat 6 May

MICA ICE CLIMB TREK

Glacier View • Sat 13 May

DENALI ZIPLINE

Talkeetna • Fri 19 May

All sales are final. Prices and dates are subject to changes without notice. Tickets are non-refundable

ALYESKA LIFT TICKETS

Mon – Fri • \$65 → \$35

Sat, Sun, & Holidays • \$85 → \$60

Tickets are date specific. Must be used on the date specified on ticket. The entire mountain must be closed all day for lift tickets to be refunded or exchanged. Tickets will not be re-issued if lost or stolen.

BIG SWIG TOURS

Wed – Sun • 2:30 – 6:30 p.m.

\$134 per person • Ages 21+

Enjoy this four hour tour visiting three local breweries sampling 14 different beers. Must have a minimum of three passengers.

HILLTOP SKI LIFT TICKETS

Single day access: \$32 → \$27

Tickets are not day specific.

SNOWMOBILE TOURS

Rider: \$155 → \$140

Driver: \$255 → \$230

Enjoy this three hour tour in Hatcher Pass. Full day and multi day tours available. For more information call 753.2378. Tours not available on Sundays.

Go visit Talkeetna, AK

Only a 2-hour drive from Anchorage, nestled at the forefront of Denali National Park, sits one of Alaska's hidden gems: Talkeetna. The town of Talkeetna sits on the junction of three separate glacial-borne rivers: the Chulitna, Susitna, and Talkeetna rivers. Its location was of paramount hunting and fishing importance to the Native Alaskan people known as the Dena-ina, and the word "Talkeetna" is derived from their language, "K'Dalkitnu," which means "river of plenty."

In 1896, the Gold Rush brought prospectors to the region and in 1905, Talkeetna became an established mining supply township, with a steady population. In 1914, after President Woodrow Wilson designated a railroad to be constructed from Seward to Fairbanks, Talkeetna became a booming railroad camp. The population reached its peak in the 1910s, but was reduced to only a few dozen in 1923. Of those few dozen people, they managed to keep the town alive.

Now, Talkeetna's population is just over 800 annually, and they are a close-knit and naturalistic community. In July of 1997, they elected a cat as honorary mayor of the town, named Stubbs. After Stubbs's death in 2017, a subsequent election at Nagley's General Store resulted in the election of Denali, the cat, as the new mayor.

And just because Talkeetna is small, it boasts plenty of summertime and wintertime activities. Nordic skiing, snowshoeing, dog mushing, and snowmachining are only a few of these activities. Flightseeing tours are also available to witness the surreal wintertime beauty of Denali and the surrounding national park.

When your day of adventure is over, savor the arts and entertainment scene of Talkeetna or chase the Northern Lights. Enjoy handcrafted soup and sandwiches at Flying Squirrel Bakery & Café, or visit the Denali Brewpub for award-winning craft beer tasting. Talkeetna has something for everyone, and visiting in the wintertime and summertime makes for a worthwhile experience.

So, if you're looking to savor the beauty of Alaska's small-town charms this winter season, give the Information, Tickets, and Travel office a call at 753-2378, or send them an email at AFTravelAlaska@gmail.com to plan your next incredible adventure.



CHILD DEVELOPMENT CENTERS

DENALI • 7377 15th ST • 552.8304

KATMAI • 7178 11th ST • 552.5113

KODIAK • 6 DYE AVE • 384.1510

TALKEETNA • 11 5th ST • 384.0686



PACAF FAMILY DAY

Fri 17 Feb

Limited care will be available.

Last day to register is on Fri 3 Feb

PRESIDENT'S DAY

Mon 20 Feb

All CYP closed

PARENT ACTIVITY: SLED DOG DECORATING

Come pick up a sled dog printout to decorate at home. Once your sled dog is complete, return to the program to display in the lobby. If you and your family have a dog, bring a picture for display as well.

Paid Ad. No Federal endorsement intended.

ORDER NOW

Visit us at
Tikahtnu Commons

f t i d raisingcane's

DOWNLOAD THE APP
OR ORDER ONLINE
RAISINGCANES.COM



FAMILY CHILD CARE

5091 10th St. • 552.3995

BECOME A FCC PROVIDER

Family Child Care, Expanded Child Care and Respite Care Providers needed. Opportunities to provide care for children with special needs. Specialized training provided.

BENEFIT HIGHLIGHTS:

- Work in the comfort of your own home
- Set your own hours and rates
- FREE trainings, furniture, and toys to check out
- Transferable to other military installations
- Get paid up to \$100/week for your own child

FREE DEPLOYMENT CHILDCARE

Families are authorized 16 hours of FREE childcare for pre and post deployment, and for each month of the deployment/remote assignment. Care can be used once orders are issued through 60 days after return.

Eligibility requirements are:

- Active Duty, Reserve, or Guard Member in activated status
- Assigned to or working on the installation
- Deployed in support of a contingency operation
- Deployed for a minimum of 30 calendar days or personnel who routinely deploy on a short-term basis

YOUTH SPORTS

6104 Carswell Ave • 854.2567



The JBER/AMC Little League Baseball & Softball registrations have begun!

- Registration: Now – 14 Apr
- Season: 24 Apr – 30 June
- Fee: Uniform included
 - Ages 5 – 8 • \$95
 - Ages 9 – 12 • \$115

Divisions:

- T-Ball: 5 & 6
- Coach Pitch: 7 & 8
- Minors: 9 & 10
- Majors: 11 & 12

All participants must be registered with the youth programs, have a current sports physical, and immunizations record with current Flu Shot. For more information, please call Youth Sports at 854.2567.

To register, email youth's name, sponsor's name, personal email, and age division to the following:
673FSS.FSYY.KennecottYC@us.af.mil



WE'RE LOOKING FOR

- Volunteer Coaches
- Officials – Paid Position

Please sign up at the Kennecott Youth Center for volunteer coaching.

For more information on the Coaches NYSCA Certification Course and paid positions, please call 854.2567.



YOUTH/TEEN CENTERS

2RIVERS • 297 6TH St • 384.1508

KENNECOTT • 6104 Carswell Ave • 552.2266

CHINESE NEW YEAR CELEBRATION

1 – 3 Feb

Celebrate Chinese New Year with special art and cooking projects all three days.

INTERNATIONAL DAY OF WOMEN AND GIRLS IN SCIENCE

Fri 10 Feb • Observed Sat 11 Feb

Join us for a special STEM project at our youth centers in celebration of women studying in the science industry.

THE BIG GAME

Fri 10 Feb

Don't forget to wear your football jersey of your favorite team as we gear up for the Big Game!

NATIONAL LOVE YOUR PET DAY

Photo Drop-off: 1 – 16 Feb

Observed Mon 20 Feb

Bring in pictures of your pets for display as we celebrate National Love Your Pet Day on Mon 20 Feb.

RANDOM ACTS OF KINDNESS DAY

Thurs 16 Feb

We will have special projects in each area to celebrate Random Acts of Kindness Day.

All Youth Program events are FREE and for members only unless otherwise noted.



GARY SINISE
★ FOUNDATION ★

Paid Ad. No Federal endorsement intended.

JBER CHAPEL COMMUNITY

MUSLIM CONGREGATIONAL PRAYER

Fridays • 11:45 a.m.
Arctic Warrior Chapel

HEATHEN SERVICES

2nd and 4th Sunday • 1 – 4 p.m.
Midnight Sun Chapel

CATHOLIC MASS

Sundays • 9 a.m.
Arctic Warrior Chapel

DAILY CATHOLIC MASS

Mon, Tues, and Thurs • 12 p.m.
Arctic Warrior Chapel

WELL – PROTESTANT CONTEMPORARY SERVICE

Sundays • 11 a.m.
Arctic Warrior Chapel

PROTESTANT TRADITIONAL SERVICE

Sundays • 11 a.m.
Heritage Chapel

For questions on all chapel activities, please call the JBER Religious Operations Center at 552.5762.



Paid Ad.

JBER LIBRARY

7 4th St • 384.1640

WEEKLY LIBRARY THEMES

Now – 4 Feb: Football/The Big Game
6 – 11 Feb: Faebruary (Fairies)
13 – 18 Feb: Pinkalicious
20 – 25 Feb: President's Day
27 Feb – 4 Mar: Dental Hygiene

ADULT READING CHALLENGE

Now – 28 Feb • Ages 18+
Here's a challenge for our JBER bookworms. Read eight books to complete the challenge and earn all ten unique virtual Beanstack badges! Everyone who registers will be entered into a drawing for a Red Robin gift card.

Register and log your books at ElmendorfRichardson.Beanstack.org.

PRESCHOOL STORY TIME

Tuesdays • 10:30 a.m.
Ages 3–5
In-person story time for preschoolers.

TODDLER TALES

Thursdays • 10:30 a.m.
Ages Infant–2
In-person story time for toddlers.

All library account holders will not be able to check out or renew books until new registration forms for 2023 have been filled out.



Blind Date with a Book

1 Feb – 28 Feb • Ages 18+

Don't judge a book by its cover. Check out a wrapped book and see if you found the match of your literary dreams. Once you're done reading, give us feedback about your "date".

FREE MOVIES

FRONTIER THEATER



BLACK ADAM
Sun 5 Feb • All Ages
Doors open: 1:30 p.m.
Show starts: 2 p.m.

AMSTERDAM
Sun 19 Feb • 18+
Doors open: 1:30 p.m.
Show starts: 2 p.m.

Outside food and non-alcoholic drinks are welcome.
Children under 13 must be accompanied by an adult.

Frontier Theater • 2 Richardson Dr • 384.9006



GAME DAYS

Sundays: 9 a.m. – 9 p.m.

Mondays: 4 – 8 p.m.

Thursdays: 4:30 – 8:30 p.m.

Come inside and enjoy the game with us in the Lounge. Every Sunday, Monday, and Thursday the NFL, NCAA, and NHL games will be aired. Snacks and drinks available for purchase. Must present DOD ID to attend.

PING PONG TOURNAMENT

Sat 18 Feb • 2 – 6 p.m. • FREE

We have a competition coming up with prizes. Sign up at the Warrior Zone front desk or call 384.9006. Must have 8 participants to offer cash prizes. Snacks and drinks available for purchase.

- 1st Place: \$100
- 2nd Place: \$75
- 3rd Place: \$50

Sun 12 Feb • FREE
Game begin: 2:30 p.m.
Doors open: 1:30 p.m.

THE BIG GAME WATCH PARTY

Who's ready for the Big Game? Join us in the Lounge and watch the big game broadcasted on 8 of our 75-inch Smart TVs throughout the room. Must be 18+ to attend. Snacks and drinks are available for purchase.

Monthly Specials



TEN PIN

7176 Fighter Dr • 770.0374
(Polar Bowl)

LOADED TOTS

\$9.19

Crispy tater tots, cheese sauce, bacon, sour cream, and green onions.

Add cookies and fountain drink or bottled water to make it a meal for \$13.49.

PARADISE CAFÉ

9497 20th St • 552.0917
(Arctic Oasis)

CHICKEN CORDON BLEU PANINI

\$9.99

Grilled chicken breast, swiss cheese, ham, and honey mustard on sourdough.

Add chips, cookies, and bottled water to make it a meal for \$13.99.



IDITAROD DINING FACILITY

8088 25th St • 552.3114

Brunch at the DFAC!

Saturday & Sundays
10:30 a.m. – 1:30 p.m.

Iditarod Dining Facility

Breakfast Skillet
Pasta Station
Carved Meats
Mocktails & More

FIND YOUR FAVORITES:

Meatless Monday
Street Taco Tuesday
Comfort Food Wednesday
Street Eat Thursday
Fish Friday
All Time Favorites on Weekends

Celebration Meals

Tue 21 Feb • 10:30 a.m. – 1:30 p.m.

Iditarod Dining Facility

Join us on Mardi Gras for lunch.

Creole Baked Cod
Cajun Chicken
Red Beans & Rice
Old Bay Potatoes
Country Style Cabbage
Okra Corn Bacon Tomatoes
Oven Roasted Carrots

ANGRY ROOSTER CHICKEN & WAFFLE

Crispy chicken and golden brown waffle drizzled with Angry Rooster sauce.

BIBIM-BOX

Korean flavors mixed for you! Come try our Signature Korean Dish bursting with flavor for lunch and dinner, Monday through Friday!

CHICKEN & SWEET POTATO WRAP

Grilled chicken, roasted sweet potatoes, arugula, shredded cabbage, feta cheese, lemon vinaigrette, and cranberries in a whole grain tortilla.

CIAO PIZZA

Taco beef pizza with taco seasoned ground beef, ripe olives, jalapeño peppers, mozzarella cheese, cheddar cheese, and salsa.

HASH BROWN BREAKFAST PANINI

Scrambled egg, bacon, crispy hash browns, American cheese, and mayo-ketchup on Italian bread.

MARGHERITA QUESADILLA

Fresh mozzarella cheese, roasted grape tomatoes, fresh basil, pizza sauce, and balsamic drizzle in a crispy tortilla.

THAI ZUCCHINI NOODLE SALAD

Chicken, cabbage, snow peas, edamame, zucchini noodles, cilantro, and lime tossed with sweet chili.





UNITE PROGRAM
9497 20th ST • 691.4094



**YOUR EVENT
OUR MONEY**



SCAN HERE for
more information
9497 • 691.4094

Thank you

TO OUR WONDERFUL SPONSORS!

For their generous support of FSS events and the JBER community!
This month's sponsors are:



If you are interested in reaching our **MILITARY & CIVILIAN** community on JBER, give us a call at 552.5473 or visit JBERLIFE.COM/Opportunities

DIRECTORY

FUN

AERO CLUB 753.4167/552.5435 • Hangar 7, 10286 Taxi Way #P
Mon – Fri: 10 a.m. – 3 p.m.
Family Days: 24/7 Access
Federal Holidays: 24/7 Access Only

ARCTICOASIS COMMUNITY CENTER 552.8529 • 9497 20th St.
Mon – Fri: 9 a.m. – 8 p.m.
Saturdays: 11 a.m. – 6 p.m.
Family Days: 10 – 5 p.m.

Closed Sundays & Federal Holidays

PARADISE CUTS • 753.1099
Please call for hours of operation

ARTS & CRAFTS CENTER 384.3717 • 755 D St.

FRAME SHOP
Tues – Fri: 8 a.m. – 4 p.m.
Saturday: 10 a.m. – 4 p.m.
Sun – Mon: Closed

ENGRAVING SHOP
Tues – Fri: 8 a.m. – 4 p.m.
Sat – Mon: Closed

CERAMICS & POTTERY
Tues – Fri: 8 a.m. – 4 p.m.
Saturday: 10 a.m. – 4 p.m.
Sun – Mon: Closed

WOOD SHOP
Tues – Fri: 8 a.m. – 4 p.m.
Saturday: 10 a.m. – 4 p.m.
Sun – Mon: Closed

Closed Federal Holidays

AUTO HOBBY 384.3718 • 755 D St.

Thurs – Sun: 11:30 a.m. – 9:30 p.m.
Mon – Wed: Closed

Closed Federal Holidays

HILLBERG SKI AREA 552.4838 • 23400 41st St.

Thurs & Fri: 4 – 8 p.m.
Sat & Sun: 10 a.m. – 6 p.m.
Federal Holidays: 10 a.m. – 2 p.m.

LESSON CENTER
Thurs & Fri: 4 – 8 p.m.
Sat, Sun & Federal Holidays: 10 a.m. – 6 p.m.

INFORMATION, TICKETS & TRAVEL 753.2378 • 9497 20th St.

Mon – Fri: 9:30 a.m. – 5:30 p.m.
Family Days: 10 a.m. – 2 p.m.

Closed Federal Holidays

LIBRARY 384.1640 • 7th St.

Mon & Fri: 9 a.m. – 6 p.m.
Tue & Thurs: 9 a.m. – 7 p.m.
Wednesday: 10 a.m. – 6 p.m.
Saturday: 10 a.m. – 5 p.m.
Family Days: 9 a.m. – 6 p.m.

Closed Sunday & Federal Holidays

Wed 8 Feb 10 a.m. – 1 p.m.

MOOSE RUN GOLF COURSE 428.0056 • 27000 Arctic Valley Rd.
CLUBHOUSE

Mon – Sun: 8 a.m. – 9 p.m.

Closed Federal Holidays

Golf Simulator open for play. Courses closed for the season

OTTER LAKE 854.1734 • 65536 Otter Lake Rd.

Call for Otter Lake Lodge & cabin rentals

Boat house closed for the season

OUTDOOR RECREATION CENTER 552.2023 • 4414 Pease Ave.
EQUIPMENT RENTALS

Mon – Fri: 10 a.m. – 6 p.m.
Saturday: 10 a.m. – 2 p.m.

Closed Sunday & Federal Holidays

OUTDOOR ADVENTURE PROGRAM (OAP)

RV STORAGE LOTS

FAMCAMP & BLACK SPRUCE CAMPGROUNDS*

** Reduced sites for winter camping*

BOAT, CAMPER & RV ISSUE 794 Davis Hwy.

For scheduled pick-ups & returns only

PERMAFROST PUB 552.3669 • 9387 Kuter Ave.

Thurs: 4 – 6 p.m.
Fri – Wed: Closed

Closed Federal Holidays & Family Days

POLAR BOWL 753.PINS (7467) • 7176 Fighter Dr.

Thursday: 12 – 8 p.m.
Fri – Sat: 12 – 10 p.m.
Sunday: 1 – 6 p.m.

Closed Federal Holidays

IGLOO LOUNGE

Thursday: 4 – 8 p.m.
Fri – Sat: 4 – 10 p.m.
Sunday: 1 – 6 p.m.

Closed Mon – Wed & Federal Holidays

SKEET, TRAP & ARCHERY RANGE 384.7981 • 45-100 Circle Dr.

Fri – Sun: 12 – 5 p.m.

Closed Federal Holidays

WARRIOR XTREME PAINTBALL 854.1734 • Upper Otter Lake Rd.

Closed for the season

WARRIOR ZONE 384.9006 / 384.9023 / 384.RIDE • 655 Richardson Dr.
 Mon – Thurs: 9 a.m. – 5 p.m.
 Fri: 9 a.m. – 9 p.m.
 Sat: 12 – 9 p.m.
 Sun: 9 a.m. – 9 p.m.
BOSS & JBADD Located inside.

FITNESS

BUCKNER FITNESS CENTER 384.1369 • 690 D St.
 STAFFED HOURS:
 Mon – Fri: 5 a.m. – 9 p.m.
 Sat – Sun: 11 a.m. – 7 p.m.
 Training Holidays: 7 a.m. – 7 p.m.
 Federal Holidays: Fitness Access Only

BUCKNER FITNESS POOL (FREE) 384.1302 • 690 D St.
*For pool operations and program times, visit
 JBERLIFE.COM/Bucknerpool*

EAGLEGLLEN FITNESS PARK 552.2023 • 4414 Pease Ave.

ELMENDORF FITNESS CENTER 552.3624 • 9510 22nd St.
 STAFFED HOURS:
 Mon – Fri: 5 a.m. – 9 p.m.
 Family Days: 7 a.m. – 7 p.m.
 Federal Holidays: Fitness Access Only

ELMENDORF FITNESS POOL (FREE) 552.9890 • 9510 22nd St.
*For pool operations and program times, visit
 JBERLIFE.COM/Elmendorfpool*

HANGAR 5 552.3624 • 7309 Johnson Ave.
 Sun – Sat: Fitness Access Only
Facility open for AF Fitness testing 30 minutes prior to test

POLAR PARADISE POOL (\$3) 384.1302 • 690 D St.
*For pool operations and program times, visit
 JBERLIFE.COM/PolarParadisePool*

FAMILY

CHILD DEVELOPMENT CENTERS (CDC)
DENALI CENTER 552.8304 • 7377 15th St.
 Mon – Fri: 6 a.m. – 5:30 p.m.
KATMAI CENTER 552.2697 / 5113 • 7181 11th St.
 Mon – Fri: 6 a.m. – 5:30 p.m.
KODIAK CENTER 384.1510 • 6 Dyea Ave.
 Mon – Fri: 6 a.m. – 5:30 p.m.
TALKEETNA CENTER 384.0686 • 11 5th St.
 Mon – Fri: 6 a.m. – 5:30 p.m.
All CDCs closed Family Days & Federal Holidays

FAMILY CHILD CARE (FCC) 552.3995 • 5091 10th St.
 Mon – Fri
 Walk ins: 8 a.m. – 11 a.m.
 By appointments: 11 a.m. – 5 p.m.
Closed Family Days & Federal Holidays

SCHOOL AGE CENTERS
ILLA 384.1068 • 36100 Arctic Valley Rd.
 School Year hours (17 Aug – 20 May)
 Mon – Fri: 6 – 9:30 a.m./3-5:30 p.m.
KETCHIKAN 552.5091 • 7163 11th St.
 School Year hours (17 Aug – 20 May)
 Mon – Fri: 6 – 9:30 a.m./3-5:30 p.m.
Closed Family Days & Federal Holidays

SCHOOL LIAISON SERVICES 384.7500/1505
 600 Richardson Dr. Rm. A-140
 Mon – Fri: 7:30 a.m. – 4:30 p.m.
Closed Family Days & Federal Holidays

YOUTH / TEEN CENTERS 384.1508 • 297 6th St.
2 RIVERS
 School Year hours (17 Aug – 20 May)
 Ages 13 – 18:
 Mon – Fri: 12 – 8 p.m.
 Ages 9 – 12:
 Mon – Fri: 3 – 6 p.m.

INSTRUCTIONAL YOUTH PROGRAMS • 854.2568
KENNECOTT 552.2266 • 6104 Carswell Ave.
 School Year hours (17 Aug – 20 May)
 Ages 13 – 18:
 Mon – Fri: 12 – 8 p.m.
 Ages 9 – 12:
 Mon – Fri: 3 – 6 p.m.
YOUTH SPORTS • 854.2567
 Mon – Fri: 12 – 5 p.m.
All Youth/Teen Centers closed Family Days & Federal Holidays

FOOD

GRIZZLY GRILL 384.1780 • 27000 Arctic Valley Rd.
Closed for the season

IDITAROD DFAC 552.3114 • 8088 25th St.
 Mon – Fri:
 Breakfast 6 – 9 a.m.
 Lunch 10:30 a.m. – 1:30 p.m.
 Dinner 4:30 – 6:30 p.m.
 Midnight 10 p.m. – 12 a.m.
 Sat, Sun, & Federal Holidays
 Breakfast 6:30 – 8:30 a.m.
 Lunch 10:30 a.m. – 1:30 p.m.
 Dinner 4:30 – 6:30 p.m.
 Midnight 10 p.m. – 12 a.m.
 Daily
 Grab & Go 6 a.m. – 6:30 p.m.

PARADISE CAFÉ 552.0917 • 9497 20th St.
 Mon – Fri: 11 a.m. – 2:30 p.m.
Closed Family Days & Federal Holidays

PROVISIONS ON DEMAND (POD) 551.0850 • 16710 Talley Ave.
 Mon – Fri: 6 a.m. – 8 p.m.
 UTA Weekends: 6 a.m. – 7 p.m.

TEN PIN 770.0374 • 7176 Fighter Dr.
 Mon – Wed: 11 a.m. – 2 p.m.
 Thursday: 11 a.m. – 6:30 p.m.
 Friday: 11 a.m. – 8 p.m.
 Saturday: 1 – 8 p.m.
 Sunday: 1 – 5 p.m.

WILDERNESS INN RESTAURANT 384.6048 • 647 C St.
 Mon. – Fri.:
 Breakfast: 7 – 9 a.m.
 Lunch: 11 a.m. – 1 p.m.
 Dinner: 4:30 – 6 p.m.
 Sat, Sun, Training Days & Federal Holidays:
 Brunch: 10 a.m. – 2 p.m.
 Supper: 4 – 5:30 p.m.

RESOURCES

ACCOUNTING (NAF) 552.9769 • 10480 Sijan Ave.
 Mon – Fri: 7:30 a.m. – 4 p.m.
Closed Family Days & Federal Holidays

EDUCATION CENTERS
AIR FORCE 552.3164 • 4109 Bullard Ave.
 Mon – Fri: 7:30 a.m. – 4 p.m.

ARMY 384.0970 • 7 4th St.
 Mon – Fri: 8 a.m. – 3:45 p.m.

HUMAN RESOURCES
APF/ CPO 552.3572 • 8517 20th St.
 Mon – Fri: 7:30 a.m. – 4:30 p.m.
Closed 1st & 3rd Tuesday at 12 p.m.

NAF 552.4563 • 8517 20th St.
 Mon, Tue, Thurs & Fri: 7:30 a.m. – 4 p.m.
 Wed: 7:30 a.m. – 12 p.m.

JBER LAUNDRY (Military Personnel Only)
 384.1902 • 726 Quartermaster Rd.
 Mon – Fri: 7:00 a.m. – 3 p.m.

LODGING 552.2454 • 7153 Fighter Dr.
 Open 24/7

MILITARY & FAMILY READINESS CENTERS
ARMY COMMUNITY SERVICE
 384.1517 • 600 Richardson Dr., Rm. A - 139
 Mon – Fri: 7:30 a.m. – 4:30 p.m.
Closed Family Days & Federal Holidays

EXCEPTIONAL FAMILY MEMBER PROGRAM (EFMP)
 384.0225 / 384.1517 • 600 Richardson Dr., Rm. A-130
 552.8840 • 8517 20th ST.

LOG CABIN 552.4943 • 8535 Wewak Dr.
 Mon – Fri: 7:30 a.m. – 4:30 p.m.
Closed Family Days & Federal Holidays

TRANSITION ASSISTANCE PROGRAM (TAP)
ARMY 384.3501 • 600 Richardson Dr., Rm. B-248
AIR FORCE 552.6619 • 8517 20th ST.

MILITARY PERSONNEL SECTION (MPS)
AIR FORCE 552.8080 • 8517 20th St.
 Mon – Fri: 8 a.m. – 3 p.m.
Closed Family Days & Federal Holidays

ARMY 384.2956 • 600 Richardson Dr.
 Mon – Fri: 8 a.m. – 5 p.m.
Closed Family Days & Federal Holidays

UNITE PROGRAM 691.4094 • 9497 20th St.
 Mon – Fri: 8 a.m. – 4:30 p.m.
Closed Federal Holidays



For current hours of operation & holiday hours, please check JBERLIFE.COM/Directory

PRO

BLITZ

NFL CHEERLEADERS



& MASCOTS

WED 8 FEB

11:30 a.m. - 1 p.m. • Meet & Greet at The Exchange Mall
4:30 - 6:30 p.m. Kennecott Youth Center Cheer Clinic
Youth must register in advance for the cheer clinic.
For more information, call 907.406.8652

GOOD TIMES, FRONT AND CENTER



SCAN HERE
for more information