

# YOKOTA AERO CLUB CESSNA 172F/M

## FLIGHT SUPPLEMENT

Version 7.1

1 February 2014

**DO NOT REMOVE CHECKLIST FROM AIRCRAFT**

### PERFORMANCE DATA (172-M)

#### TAKE-OFF DATA

TAKE-OFF DISTANCE FROM HARD SURFACE RUNWAY, FLAPS 10°

Gross Weight Lbs	IAS AT 50 ft	HEAD WIND MPH	At Sea Level 59° F		At 2500' 50° F		At 5000' 41° F		At 7500' 32° F	
			Ground Roll	Total to clear 50' Obs	Ground Roll	Total to clear 50' Obs	Ground Roll	Total to clear 50' Obs	Ground Roll	Total to clear 50' Obs
2500	70	0	600	1205	720	1420	875	1715	1050	2080
		10	405	905	495	1075	610	1315	745	1610
		20	250	640	310	770	390	955	485	1190
2200	65	0	445	935	535	1085	645	1290	770	1525
		10	295	690	355	810	440	970	530	1160
		20	170	475	215	565	270	690	335	835
1900	61	0	320	715	380	820	460	960	545	1115
		10	205	520	245	600	300	710	365	830
		20	110	345	140	405	175	485	220	580

Notes: 1. Increase distance 10% for each 25° F above standard temperature for particular altitude  
2. For operation on a dry, grass runway, increase distance (both "ground roll" and "total to clear 50ft obstacle") by 7% of the "total to clear 50ft obstacle" figure.

#### CRUISE FUEL CONSUMPTION

Pressure Altitude Feet	Conditions: 2550 Lbs Recommended Lean Mixture							
	RPM	20° C Below Standard Temp		Standard Temperature		20° C Above Standard Temp		GPH
		%BPH	GPH	%BPH	GPH	%BPH	GPH	
2000	2550	----	----	76	10.2	72	9.6	
	2500	77	10.3	72	9.6	68	9.1	
	2400	69	9.2	64	8.7	61	8.3	
	2300	61	8.3	58	7.9	55	7.6	
	2200	55	7.5	52	7.2	49	6.9	
4000	2100	49	6.8	46	6.6	43	6.3	
	2600	----	----	76	10.2	72	9.6	
	2500	73	9.7	68	9.2	65	8.7	
	2400	65	8.8	62	8.3	58	8.0	
	2300	58	8.0	55	7.6	52	7.3	
6000	2200	52	7.3	49	6.9	47	6.6	
	2100	46	6.6	44	6.3	41	6.1	
	2600	77	10.3	76	10.1	72	9.6	
	2500	69	9.3	65	8.8	62	8.4	
	2400	62	8.4	59	8.0	56	7.6	
8000	2300	56	7.7	53	7.3	50	7.0	
	2200	50	7.0	47	6.7	44	6.4	
	2600	73	9.8	69	9.2	65	8.7	
	2500	66	8.8	62	8.4	59	8.0	
	2400	59	8.1	56	7.7	53	7.3	
10,000	2300	53	7.4	50	7.0	47	6.7	
	2200	47	6.7	45	6.4	42	6.1	
	2700	77	10.2	72	9.6	68	9.1	
	2600	69	9.3	65	8.8	62	8.4	
	2500	63	8.5	59	8.1	56	7.7	
12,000	2400	57	7.8	53	7.4	50	7.0	
	2300	51	7.1	48	6.8	45	6.5	
	2700	69	9.3	65	8.8	62	8.4	
	2600	66	8.9	62	8.4	59	8.0	
	2500	60	8.2	56	7.7	53	7.4	
2400	54	7.5	51	7.1	48	6.7		
2300	48	6.8	45	6.5	42	6.2		

#### LANDING DATA

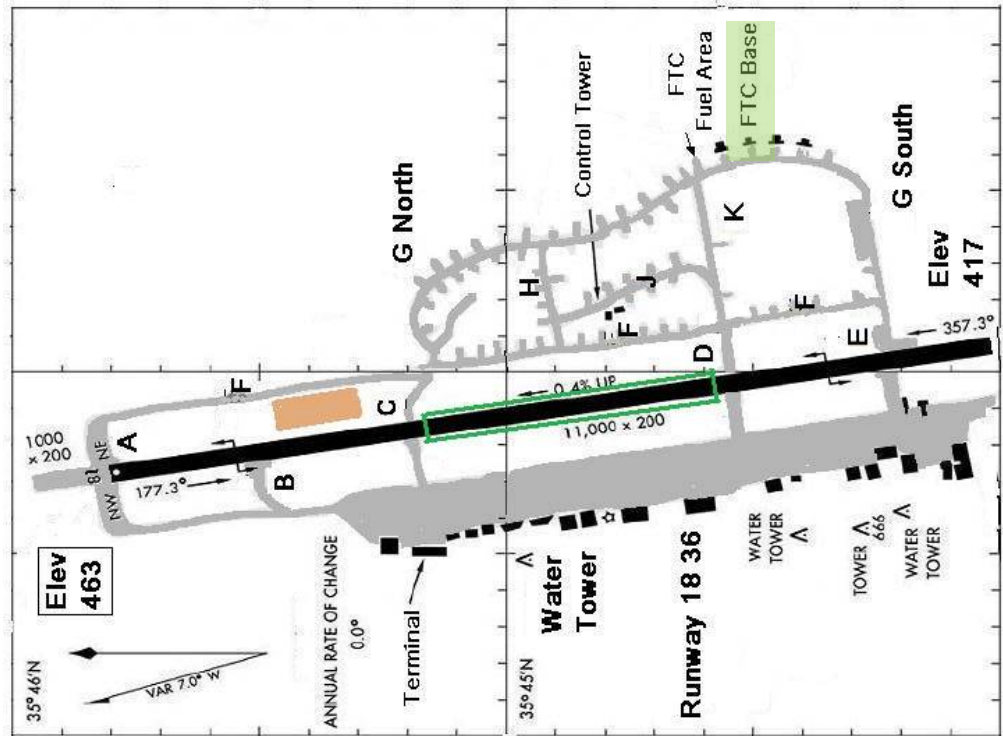
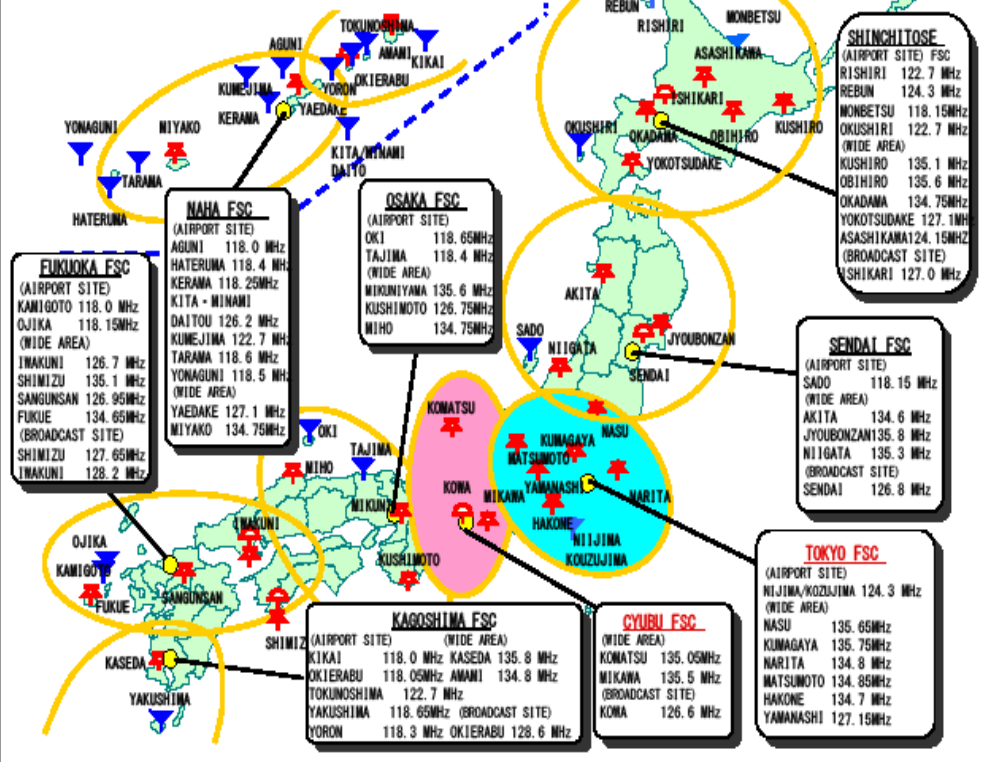
LANDING DISTANCE ON HARD SURFACE RUNWAY

NO WIND - 30° FLAPS - POWER OFF

Gross Weight Lbs	Approach Pressure	0° C		10° C		20° C		30° C		40° C		
		Ground Roll	Total to clear 50' Obs	Ground Roll	Total to clear 50' Obs	Ground Roll	Total to clear 50' Obs	Ground Roll	Total to clear 50' Obs	Ground Roll	Total to clear 50' Obs	
2550	71	SL	545	1290	565	1320	585	1350	605	1380	625	1415
		1000	565	1320	585	1350	605	1385	625	1420	650	1450
		2000	585	1355	610	1385	630	1420	650	1455	670	1490
		3000	610	1385	630	1425	655	1460	675	1495	695	1530
		4000	630	1425	655	1460	675	1495	700	1535	725	1570
		5000	655	1460	680	1500	705	1535	725	1575	750	1615
		6000	680	1500	705	1540	730	1580	755	1620	780	1660
		7000	705	1545	730	1585	760	1625	785	1665	810	1705
8000	735	1585	760	1630	790	1670	815	1715	840	1755		

Notes: 1. Reduce landing distance 10% for each 5 knots headwind  
2. For operation on a dry, grass runway, increase distance (both "ground roll" and "total to clear 50ft obstacle") by 20% of the "total to clear 50ft obstacle" figure.  
3. If landing with flaps up is necessary, increase approach speed by 10mph IAS and allow for 35% longer landing distance.

### Flight Service Center Frequencies FSS Equivalent



### Alternate / Emergency Airfield Data

CESSNA 172 F (T-41) / 172M 105 mph

Field	Distance (nm)	No Wind ETE (min)	Runway	Fuel Required			
				Wind Factor	0 knots	15 knots	30 knots
Atsugi	20	12	Rwy 01/19	Fuel	1.8	1.9	2
			8000x150	Duration	12	13	14
Utsunomiya	50	29	Rwy 18/36	Fuel	4.2	4.7	5.8
			5570x150	Duration	29	34	40
Iruma	126.2	6	Rwy 04/22	Fuel	0.9	1	1.2
			6562x148	Duration	6	7	8
Tachikawa	5	3	Rwy 14/32	Fuel	0.5	0.5	0.6
			2952x148	Duration	3	3	4





